

HALLIBURTON

iCem[®] Service

TEP ROCKY MOUNTAIN LLC

For: Lynn Cass and Mark Mewshaw

Date: Saturday, October 22, 2016

YOUBERG SR 544-12 Surface

API# 05-045-23255-00

Sincerely,

Grand Junction Cement Engineering

2.0 Real-Time Job Summary

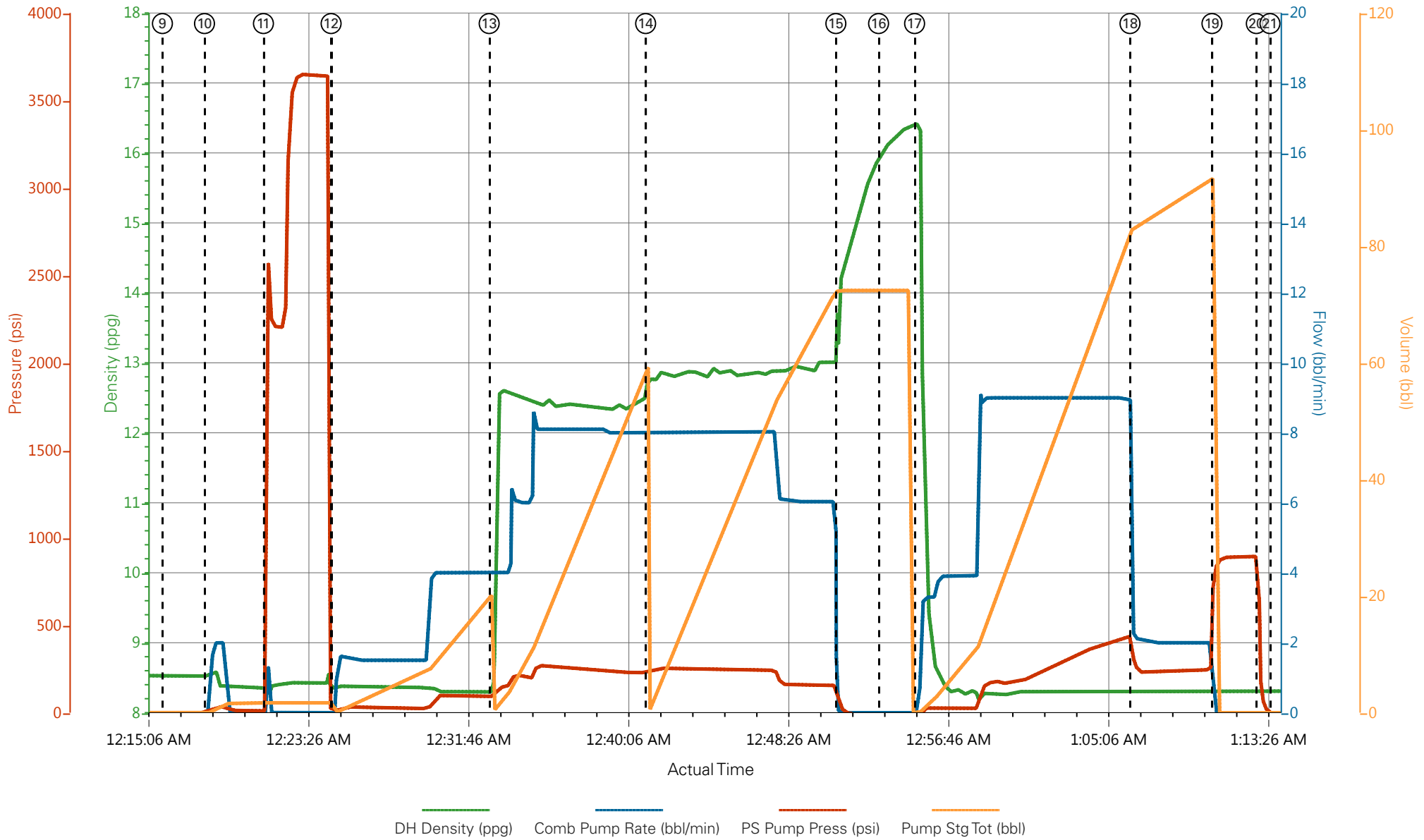
2.1 Job Event Log

Type	Seq. No.	Graph Label	Date	Time	Source	DH Density <i>(ppg)</i>	Comb Pump Rate <i>(bbl/min)</i>	PS Pump Press <i>(psi)</i>	Pump Stg Tot <i>(bbl)</i>	Comments
Event	1	Call Out	10/21/2016	14:00:00	USER					ELITE #8
Event	2	Pre-Convoy Safety Meeting	10/21/2016	16:00:00	USER					ALL HES EMPLOYEES
Event	3	Arrive At Loc	10/21/2016	18:30:00	USER					ARRIVED ON LOCATION 1 1/2 HOURS EARLY RIG RUNNING WIPER TRIP UPON HES ARRIVAL
Event	4	Meet With Company Rep	10/21/2016	18:35:00	USER					COMPANY REP OFFERED SDS WATER TEST: TEMP: 56 PH:7 CHLORIDES:0
Event	5	Assessment Of Location Safety Meeting	10/21/2016	22:00:00	USER					ALL HES EMPLOYEES
Event	6	Pre-Rig Up Safety Meeting	10/21/2016	22:15:00	USER					ALL HES EMPLOYEES
Event	7	Rig-Up Equipment	10/21/2016	22:30:00	USER					1 HT-400 PUMP TRUCK (ELITE #8) 1 660 BULK TRUCK 1 F-550 PICKUP
Event	8	Pre-Job Safety Meeting	10/22/2016	00:00:00	USER					ALL HES EMPLOYEES AND RIG CREW
Event	9	Start Job	10/22/2016	00:16:00	COM5					TD 1184 TP:1178 SJ: 48 CSG: 9 5/8 32.3# H-40 OH: 13 1/2 MUD WT: 9.4 18" CONDUCTOR @ 80' CSG SET DEPTH 1174
Event	10	Prime Lines	10/22/2016	00:18:11	COM5	8.33	2.0	35	2.0	PRIME LINES WITH 2 BBLS FRESH WATER
Event	11	Test Lines	10/22/2016	00:21:15	COM5	8.33	0.0	3650	2.0	PRESSURE TEST OK
Event	12	Pump Fresh Water Spacer	10/22/2016	00:24:47	COM5	8.33	4.0	95	20	PUMP 20 BBL FRESH WATER SPACER
Event	13	Pump Lead Cement	10/22/2016	00:33:01	COM5	12.3	8.0	250	55.1	130 SKS VariCem 12.3 PPG 2.38 YIELD 13.77 GAL/SK LEAD CEMENT WEIGHT VERIFIED VIA PRESSURIZED MUD SCALES
Event	14	Pump Tail Cement	10/22/2016	00:41:10	COM5	12.8	8.0	250	65.8	175 SKS VariCem 12.8 PPG 2.11 YIELD 11.78 GAL/SK

TAIL CEMENT WEIGHT VERIFIED VIA PRESSURIZED
MUD SCALES

Event	15	Shutdown	10/22/2016	00:51:04	USER						SHUTDOWN TO DROP PLUG
Event	16	Drop Top Plug	10/22/2016	00:53:18	COM5						PLUG AWAY NO PROBLEMS, WASHED UP ON TOP OF THE PLUG AS PER COMPANY REP
Event	17	Pump Displacement	10/22/2016	00:55:10	COM5	8.33	9.0	425	88.9		FRESH WATER DISPLACEMENT
Event	18	Slow Rate	10/22/2016	01:06:24	COM5	8.33	2.0	250	78		SLOW RATE TO BUMP PLUG
Event	19	Bump Plug	10/22/2016	01:10:40	COM5	8.33	2.0	899	88.9		PSI BEFORE BUMPING PLUG @ 250 BUMPED PLUG UP TO 899 PSI
Event	20	Check Floats	10/22/2016	01:12:58	COM5						FLOATS HELD, 1/2 BBL BACK TO DISPLACEMENT TANKS
Event	21	End Job	10/22/2016	01:13:41	COM5						GOOD RETURNS THROUGHOUT JOB 16 BBLS OF CEMENT TO SURFACE RIG USED 40#S OF SUGAR
Event	22	Pre-Rig Down Safety Meeting	10/22/2016	01:30:00	USER						ALL HES EMPLOYEES
Event	23	Rig-Down Equipment	10/22/2016	02:00:00	USER						
Event	24	Pre-Convoy Safety Meeting	10/22/2016	02:50:00	USER						ALL HES EMPLOYEES
Event	25	Crew Leave Location	10/22/2016	03:00:00	USER						THANK YOU FOR USING HALLIBURTON CEMENT , DUSTIN SMITH AND CREW

TEP - YOUNBERG SR 544-12 - 9 5/8 SURFACE



— DH Density (ppg)
 — Comb Pump Rate (bbl/min)
 — PS Pump Press (psi)
 — Pump Stg Tot (bbl)

- | | | | | |
|---|-----------------------------|---------------------------|---------------------|--------------------------------|
| ① Call Out | ⑥ Pre-Rig Up Safety Meeting | ⑪ Test Lines | ⑯ Drop Top Plug | 21 End Job |
| ② Pre-Convoy Safety Meeting | ⑦ Rig-Up Equipment | ⑫ Pump Fresh Water Spacer | ⑰ Pump Displacement | 22 Pre-Rig Down Safety Meeting |
| ③ Arrive At Loc | ⑧ Pre-Job Safety Meeting | ⑬ Pump Lead Cement | ⑱ Slow Rate | 23 Rig-Down Equipment |
| ④ Meet With Company Rep | ⑨ Start Job | ⑭ Pump Tail Cement | ⑲ Bump Plug | 24 Pre-Convoy Safety Meeting |
| ⑤ Assessment Of Location Safety Meeting | ⑩ Prime Lines | ⑮ Shutdown | 20 Check Floats | 25 Crew Leave Location |

▼ **HALLIBURTON** | iCem® Service

Created: 2016-10-21 14:52:51, Version: 4.2.393

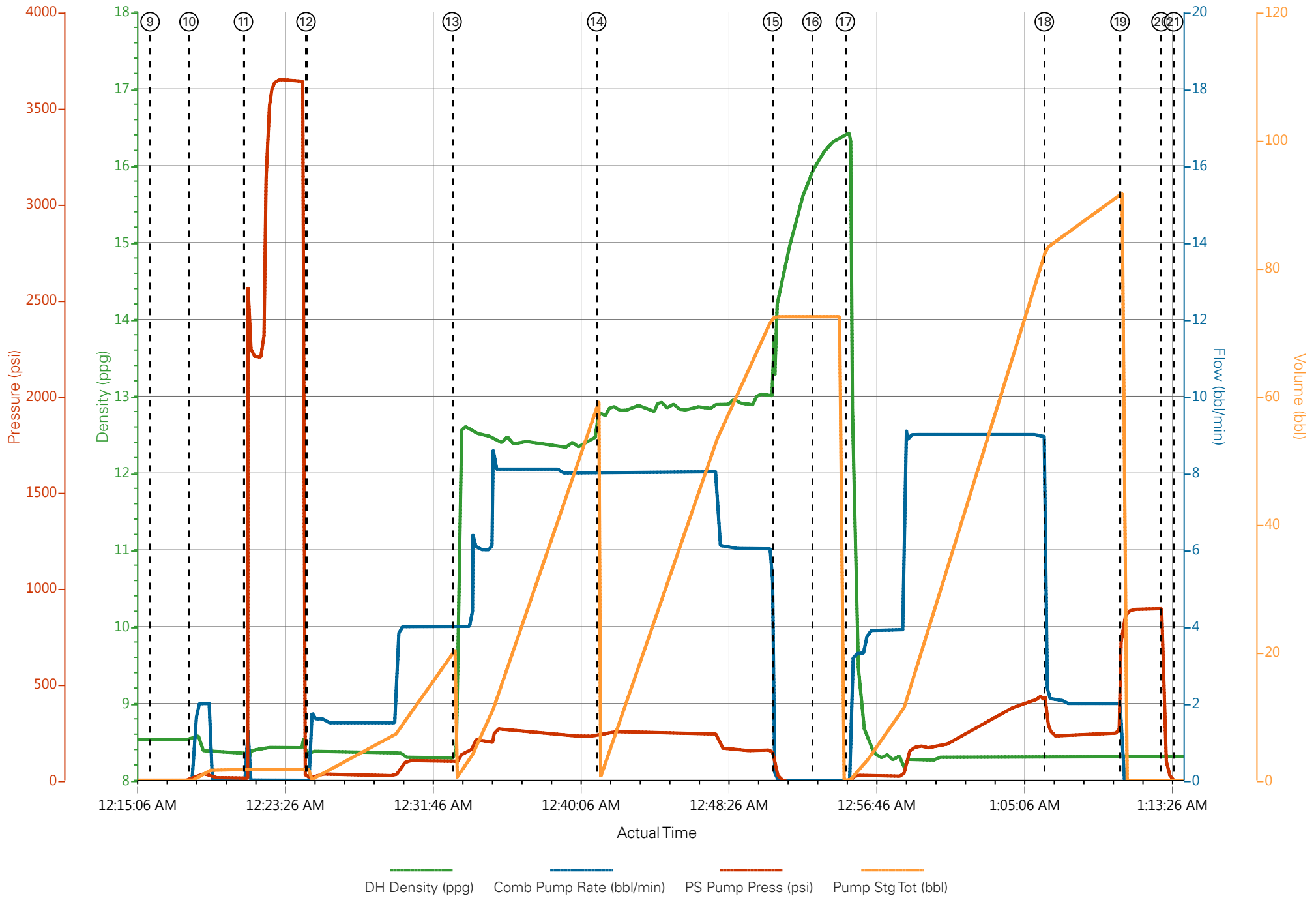
Edit

Customer : TEP ROCKY MOUNTAIN LLC
 Representative : BEAUDE OAKS

Job Date : 10/21/2016 11:13:39 PM
 Sales Order # : 0903609609

Well : YOUNBERG SR 544-12
 ELITE #8 : DUSTIN SMITH / CLIFF SPARKS

TEP - YOUNBERG SR 544-12 - 9 5/8 SURFACE



— DH Density (ppg)
 — Comb Pump Rate (bbl/min)
 — PS Pump Press (psi)
 — Pump Stg Tot (bbl)