



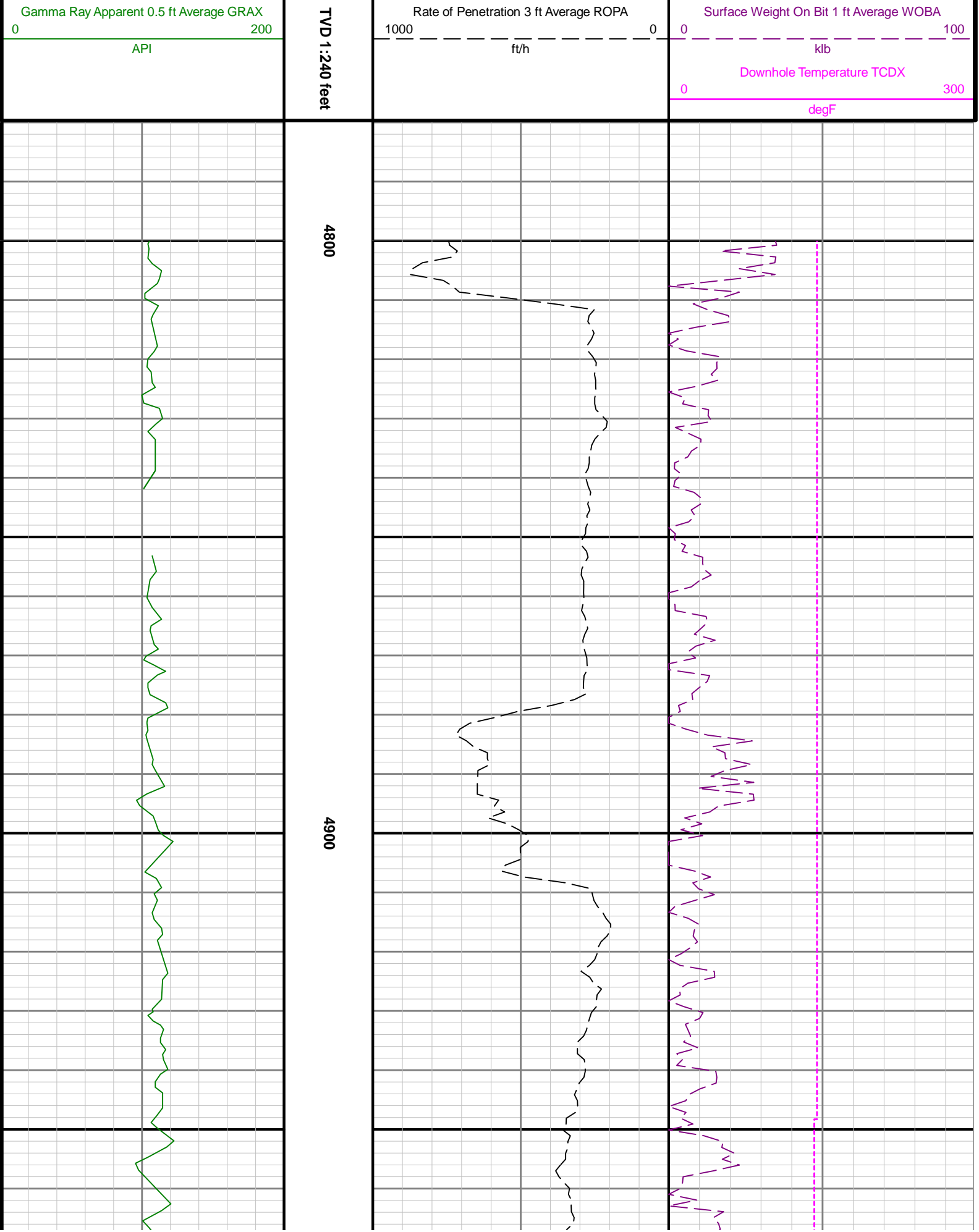
Company Whiting Oil & Gas Corp.  
Well Horsetail #30E-1903

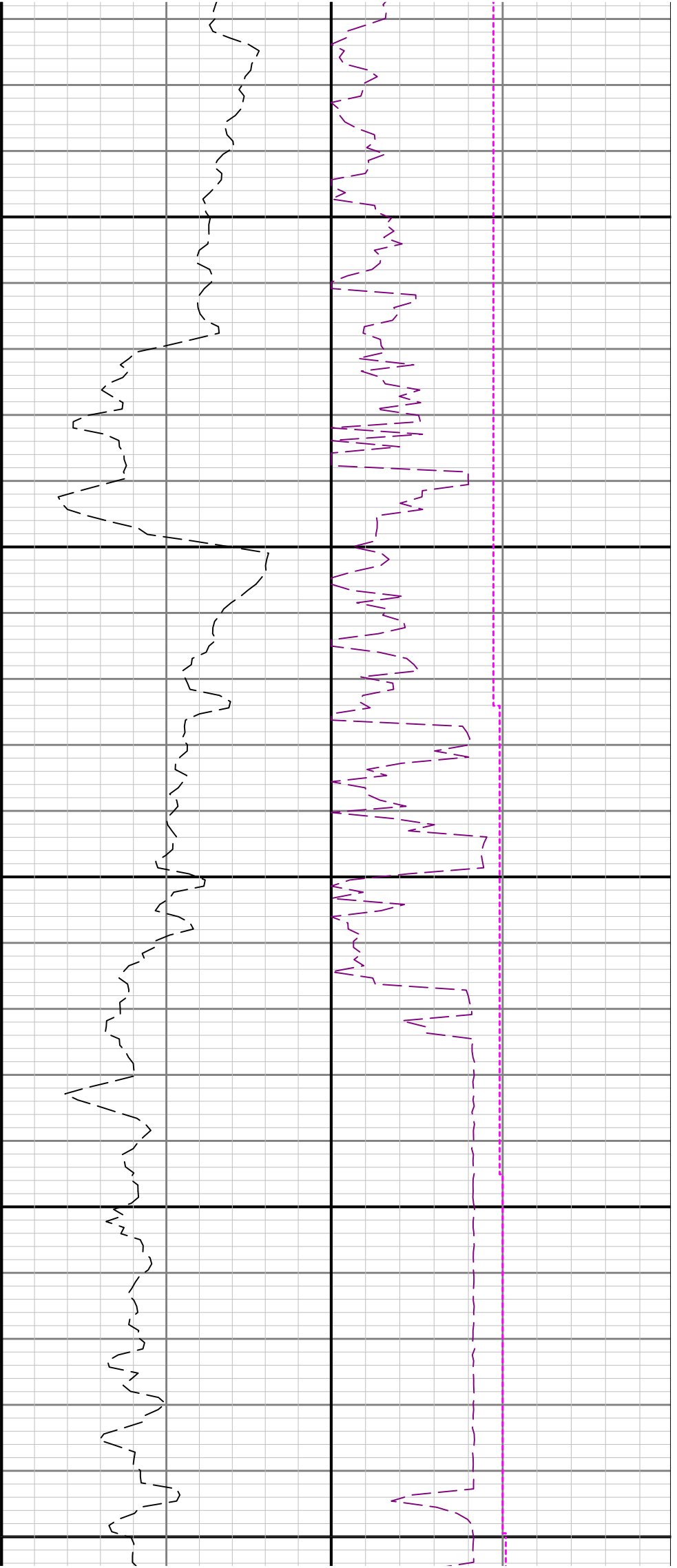
Interval  
Date From: 2016-10-12 05:04:52  
Date To: 2016-10-12 15:00:49  
Created 2016-10-12 15:17

Top: 4800.00  
Bottom: 5608.00

Source Description

F\_ORIG. ORIG.:R001-R002

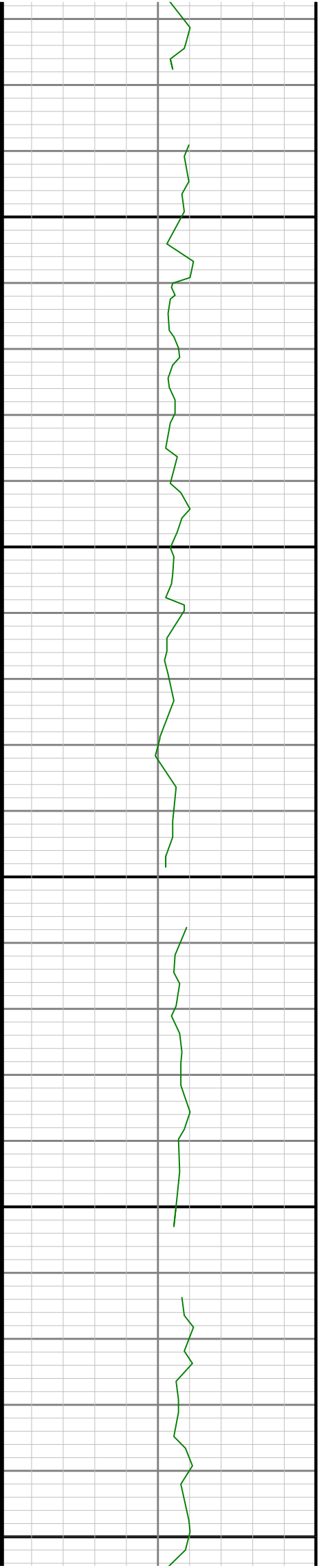




5000

5100

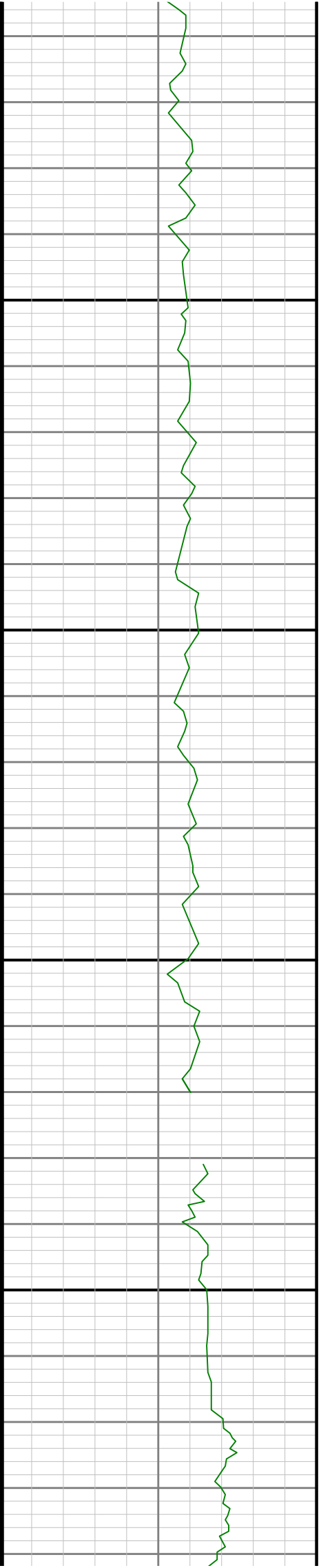
5200

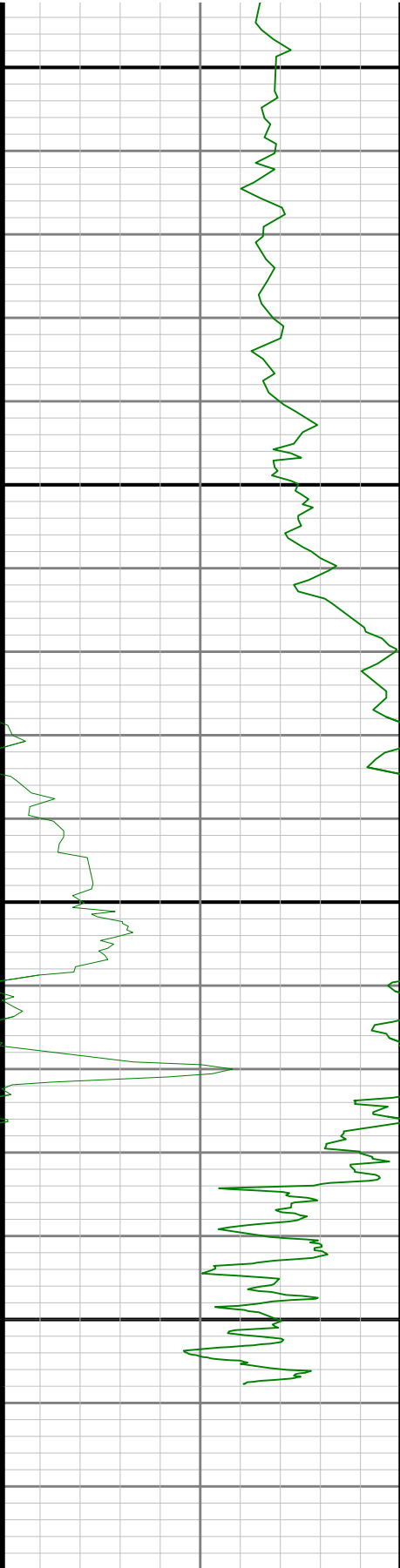




5300

5400



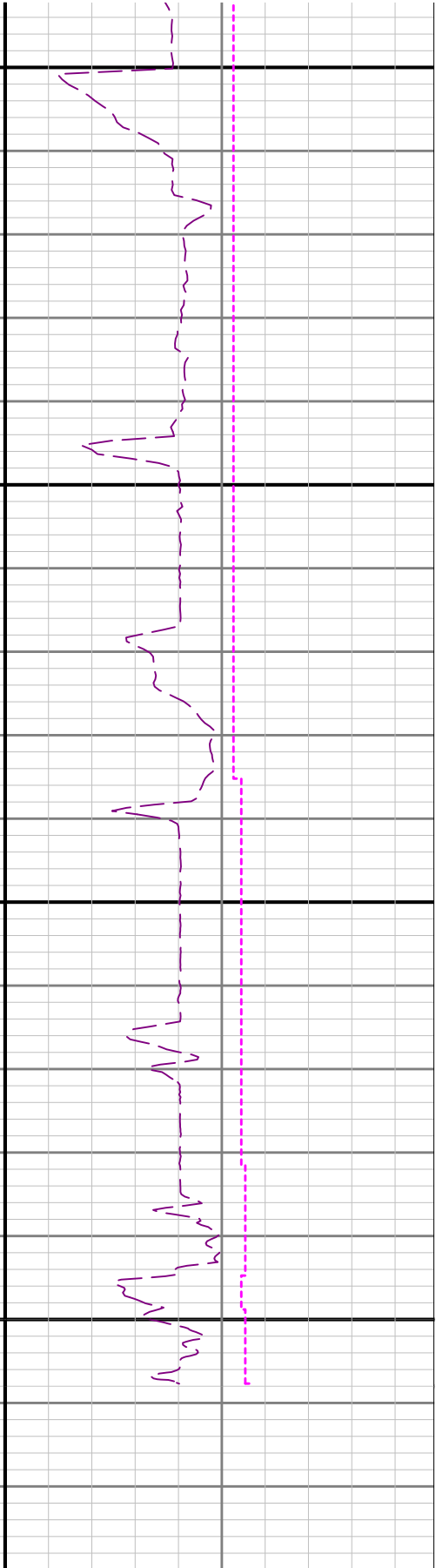


Gamma Ray Apparent 0.5 ft Average GRAX  
0 200  
API

5500  
5600  
TVD 1:240 feet



Rate of Penetration 3 ft Average ROPA  
1000 0  
ft/h



Surface Weight On Bit 1 ft Average WOBA  
0 100  
klb  
Downhole Temperature TCDX  
0 300  
degF