

HALLIBURTON

iCem[®] Service

EXTRACTION OIL & GAS

Date: Saturday, August 13, 2016

Varra 12

Surface

Job Date: Tuesday, August 02, 2016

Sincerely,

Justin Lansdale

Legal Notice

Warning Disclaimer

Although the information contained in this report is based on sound engineering practices, the copyright owner(s) does (do) not accept any responsibility whatsoever, in negligence or otherwise, for any loss or damage arising from the possession or use of the report whether in terms of correctness or otherwise. The application, therefore, by the user of this report or any part thereof, is solely at the user's own risk.

Limitations of Liability

Except as expressly set forth herein, there are no representations or warranties by Halliburton, express or implied, including implied warranties of merchantability and/or fitness for a particular purpose. In no event will Halliburton or its suppliers be liable for consequential, incidental, special, punitive or exemplary damages (including, without limitation, loss of data, profits, use of hardware, or software). Customer accepts full responsibility for any investment made based on results from the Software. Any interpretations, analyses or modeling of any data, including, but not limited to Customer data, and any recommendation or decisions based upon such interpretations, analyses or modeling are opinions based upon inferences from measurements and empirical relationships and assumptions, which inferences and assumptions are not infallible, and with respect to which professional may differ. Accordingly, Halliburton cannot and does not warrant the accuracy, correctness or completeness of any such interpretation, recommendation, modeling or other products of the Software Product. As such, any interpretation, recommendation or modeling resulting from the Software for the purpose of any drilling, well treatment, production or financial decision will be at the sole risk of Customer. Under no circumstances will Halliburton or its suppliers be liable for any damages.

Table of Contents

Cementing Job Summary 4

 Executive Summary4

Real-Time Job Summary 7

 Job Event Log.....7

 Custom Graph.....9

1.0 Cementing Job Summary

1.1 Executive Summary

Halliburton appreciates the opportunity to perform the cementing services on the **Varra 12** cement **Surface** casing job. A pre-job safety meeting was held before the job where details of the job were discussed, potential safety hazards were reviewed, and environmental compliance procedures were outlined.

25 bbls of cement to surface

Halliburton maintains a continuous quality improvement process and appreciates any comments or suggestions that you may have. Halliburton again thanks you for the opportunity to perform service work on this well. We hope to be your solutions provider for future projects.

Respectfully,

Halliburton [Fort Lupton]

HALLIBURTON

Cementing Job Summary

The Road to Excellence Starts with Safety

Sold To #: 369404	Ship To #: 3563406 3563352	Quote #:	Sales Order #: 0903449038							
Customer: EXTRACTION OIL & GAS -		Customer Rep: Todd								
Well Name: VARRA	Well #: 2.12	API/UWI #:	05-123-39992							
Field: WATTENBERG	City (SAP): WINDSOR	County/Parish: WELD	State: COLORADO							
Legal Description: NW SW-5-6N-67W-1719FSL-791FWL										
Contractor:		Rig/Platform Name/Num: Spud Rig								
Job BOM: 7521										
Well Type: HORIZONTAL OIL										
Sales Person: HALAMERICA/HB71271		Srvc Supervisor: Andrew Stahlke								
Job										
Formation Name										
Formation Depth (MD)	Top	Bottom								
Form Type	BHST									
Job depth MD	1550ft	Job Depth TVD								
Water Depth		Wk Ht Above Floor	3'							
Perforation Depth (MD)	From	To								
Well Data										
Description	New / Used	Size in	ID in	Weight lbm/ft	Thread	Grade	Top MD ft	Bottom MD ft	Top TVD ft	Bottom TVD ft
Casing		9.625	8.921	36			0	1550	0	1550
Open Hole Section			13.5				0	1550	0	1550
Tools and Accessories										
Type	Size in	Qty	Make	Depth ft	Type	Size in	Qty	Make		
Guide Shoe	9.625			1550	Top Plug	9.625	1	Weatherford		
Float Shoe	9.625				Bottom Plug	9.625		HES		
Float Collar	9.625				SSR plug set	9.625		HES		
Insert Float	9.625				Plug Container	9.625		HES		
Stage Tool	9.625				Centralizers	9.625		HES		
Fluid Data										
Stage/Plug #: 1										
Fluid #	Stage Type	Fluid Name	Qty	Qty UoM	Mixing Density lbm/gal	Yield ft3/sack	Mix Fluid Gal	Rate bbl/min	Total Mix Fluid Gal	
1	Fresh Water	Fresh Water	20	bbl	8.33					
Fluid #	Stage Type	Fluid Name	Qty	Qty UoM	Mixing Density lbm/gal	Yield ft3/sack	Mix Fluid Gal	Rate bbl/min	Total Mix Fluid Gal	
2	SwiftCem B2	SWIFTCM (TM) SYSTEM	565	sack	13.5	1.74		6	9.19	
9.19 Gal		FRESH WATER								

last updated on 8/3/2016 1:34:00 AM

Page 1 of 3

iCem® Service

(v. 4.2.393)

Created: Saturday, August 13, 2016

HALLIBURTON

Cementing Job Summary

Fluid #	Stage Type	Fluid Name	Qty	Qty UoM	Mixing Density lbm/gal	Yield ft ³ /sack	Mix Fluid Gal	Rate bbl/min	Total Mix Fluid Gal
3	Fresh Water	Fresh Water	119	bbl	8.33				

2.0 Real-Time Job Summary

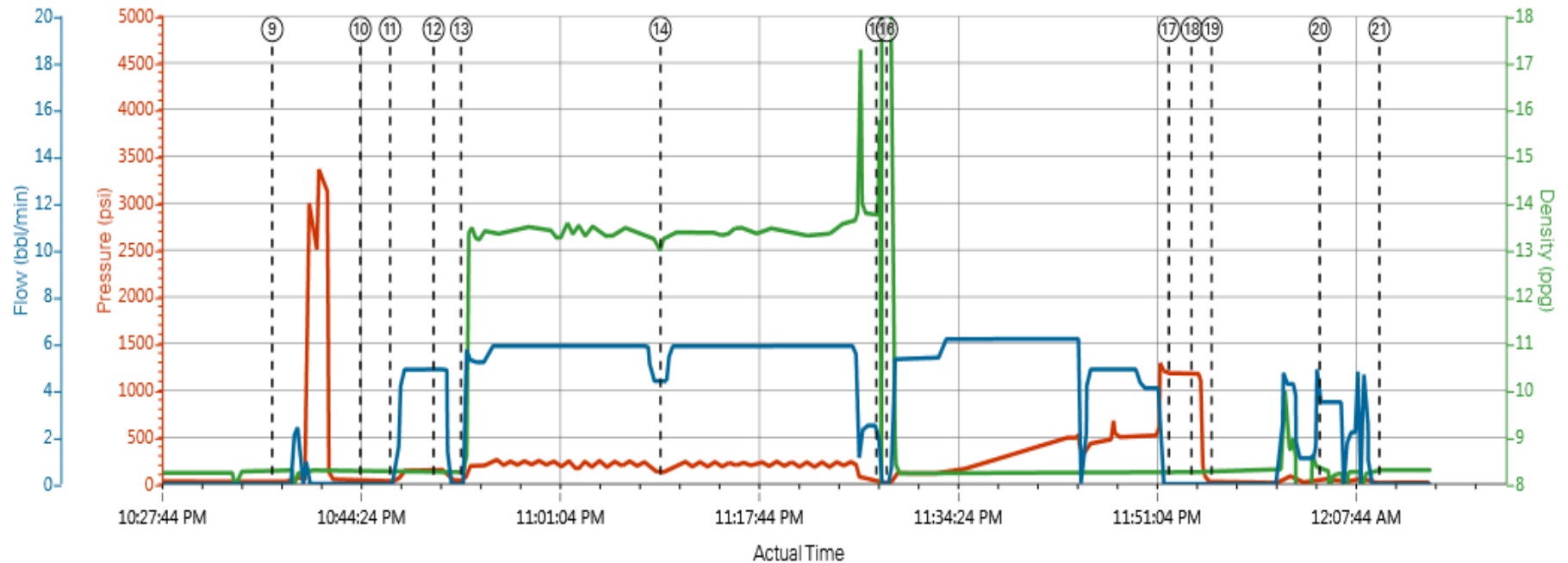
2.1 Job Event Log

Type	Seq. No.	Activity	Graph Label	Date	Time	Source	Comments
Event	1	Call Out	Call Out	8/2/2016	05:00:00	USER	
Event	2	Depart from Service Center or Other Site	Depart from Service Center or Other Site	8/2/2016	09:00:00	USER	
Event	3	Arrive At Loc	Arrive At Loc	8/2/2016	10:30:00	USER	
Event	4	Other	Other	8/2/2016	11:00:00	USER	wait on rig to run casing.
Event	5	Pre-Rig Up Safety Meeting	Pre-Rig Up Safety Meeting	8/2/2016	19:00:00	USER	
Event	6	Rig-Up Equipment	Rig-Up Equipment	8/2/2016	19:10:00	USER	
Event	7	Rig-Up Completed	Rig-Up Completed	8/2/2016	20:00:00	USER	
Event	8	Pre-Job Safety Meeting	Pre-Job Safety Meeting	8/2/2016	22:20:00	USER	
Event	9	Start Job	Start Job	8/2/2016	22:37:14	COM8	
Event	10	Test Lines	Test Lines	8/2/2016	22:44:37	COM8	Tested lines to 3000 psi.
Event	11	Pump Spacer 1	Pump Spacer 1	8/2/2016	22:47:06	COM8	Pumped 20 bbls dyed f/w spacer.
Event	12	Check Weight	Check weight	8/2/2016	22:50:45	COM8	Confirmed weight with pressurized mud scales. 13.4 ppg
Event	13	Pump Cement	Pump Cement	8/2/2016	22:53:03	COM8	Mixed and pumped 565 sks/ 175 bbls of cement at 13.5 ppg. HOL- 1587' TOL-0'
Event	14	Check Weight	Check weight	8/2/2016	23:09:45	COM8	Confirmed weight with pressurized mud scales. 13.5 ppg
Event	15	Drop Top Plug	Drop Top Plug	8/2/2016	23:27:51	COM8	Dropped 9 5/8 weatherford top plug.

Event	16	Pump Displacement	Pump Displacement	8/2/2016	23:28:43	COM8	Pumped 119 bbls f/w displacement. Had good returns entire job getting back 25 bbls of good cement to surface.
Event	17	Bump Plug	Bump Plug	8/2/2016	23:52:21	COM8	Bumped plug 500 over from 500 - 1000 psi
Event	18	Other	Other	8/2/2016	23:54:15	COM8	Floats held got 1 bbl back
Event	19	End Job	End Job	8/2/2016	23:55:56	COM8	
Event	20	Pre-Rig Down Safety Meeting	Pre-Rig Down Safety Meeting	8/3/2016	00:05:00	USER	
Event	21	Rig-Down Equipment	Rig-Down Equipment	8/3/2016	00:10:00	USER	
Event	22	Depart Location	Depart Location	8/3/2016	01:00:00	USER	

2.2 Custom Graph

Extraction Verra 2 surface



PS Pump Press (psi) DH Density (ppg) Comb Pump Rate (bbl/min)

- | | | | | | |
|--|-----------------------------|---|------------------------------------|------------------------|---------------------------|
| ① Call Out n/a;n/a;n/a | ③ Arrive At Loc n/a;n/a;n/a | ⑤ Pre-Rig Up Safety Meeting n/a;n/a;n/a | ⑦ Rig-Up Completed 5;8.23;0 | ⑨ Start Job 25;8.3;0 | ⑪ Pump Spacer 130;8.25; |
| ② Depart from Service Center or Other Site n/a;n/a;n/a | ④ Other n/a;n/a;n/a | ⑥ Rig-Up Equipment n/a;n/a;n/a | ⑧ Pre-Job Safety Meeting 27;8.24;0 | ⑫ Test Lines 32;8.25;0 | ⑭ Check weight 151;8.25;4 |

