

HALLIBURTON

iCem[®] Service

EXTRACTION OIL & GAS

United States of America, COLORADO

Date: Saturday, October 29, 2016

Varra #6

Production

Job Date: Monday, October 17, 2016

Sincerely,

Lauren Roberts

Legal Notice

Disclaimer:

All information in this report is provided subject to the terms and conditions which govern the services provided by Halliburton. Halliburton personnel use their best efforts in gathering information and their best judgment in interpreting it, but any interpretation, research, analysis or recommendation furnished by Halliburton are opinions based upon inferences from measurements and empirical relationships and assumptions, which inferences and empirical relationships and assumptions are not infallible, and with respect to which professionals in the industry may differ. Accordingly, HALLIBURTON IS UNABLE TO GUARANTEE THE ACCURACY OF ANY CHART INTERPRETATION, RESEARCH ANALYSIS, OR JOB RECOMMENDATION and any interpretation or recommendation is not for use of or reliance upon by any third party. The customer has full responsibility for any of its decisions which are based on the information provided in this report.

Table of Contents

1.0 Cementing Job Summary 4

 1.1 Executive Summary4

2.0 Real-Time Job Summary 7

 2.1 Job Event Log7

3.0 Attachments..... 9

 3.1 CHART.png.....9

 3.2 NO LEGEND.png.....10

1.0 Cementing Job Summary

1.1 Executive Summary

Halliburton appreciates the opportunity to perform the cementing services on the **Varra #6** cement **Production** casing job. A pre-job safety meeting was held before the job where details of the job were discussed, potential safety hazards were reviewed, and environmental compliance procedures were outlined.

70 bbl. of cement returned to surface.

Halliburton maintains a continuous quality improvement process and appreciates any comments or suggestions that you may have. Halliburton again thanks you for the opportunity to perform service work on this well. We hope to be your solutions provider for future projects.

Respectfully,

Halliburton [Ft. Lupton]

The Road to Excellence Starts with Safety

Sold To #: 369404		Ship To #: 3563400		Quote #:		Sales Order #: 0903604041				
Customer: EXTRACTION OIL & GAS				Customer Rep: LARRY LAVALLEY						
Well Name: VARRA			Well #: 6		API/UWI #: 05-123-39989-00					
Field: WATTENBERG		City (SAP): WINDSOR		County/Parish: WELD		State: COLORADO				
Legal Description: NW SW-5-6N-67W-1615FSL-788FWL										
Contractor: PATTERSON-UTI ENERGY				Rig/Platform Name/Num: PATTERSON 341						
Job BOM: 7523										
Well Type: HORIZONTAL OIL										
Sales Person: HALAMERICA\HX38199				Srv Supervisor: Jesse Slaughter						
Job										
Formation Name										
Formation Depth (MD)		Top		Bottom						
Form Type				BHST						
Job depth MD		17004ft		Job Depth TVD						
Water Depth				Wk Ht Above Floor		4ft				
Perforation Depth (MD)		From		To						
Well Data										
Description	New / Used	Size in	ID in	Weight lbm/ft	Thread	Grade	Top MD ft	Bottom MD ft	Top TVD ft	Bottom TVD ft
Casing		9.625	8.921	36			0	1609	0	0
Casing		5.5	4.778	20			0	17004	0	0
Open Hole Section			7.875				1561	17002	0	7100
Tools and Accessories										
Type	Size in	Qty	Make	Depth ft		Type	Size in	Qty	Make	
Guide Shoe	5.5					Top Plug	5.5	1	KLX	
Float Shoe	5.5			17004		Bottom Plug	5.5		HES	
Float Collar	5.5					SSR plug set	5.5		HES	
Insert Float	5.5					Plug Container	5.5	1	HES	
Stage Tool	5.5					Centralizers	5.5		HES	
Fluid Data										
Stage/Plug #: 1										
Fluid #	Stage Type	Fluid Name	Qty	Qty UoM	Mixing Density lbm/gal	Yield ft3/sack	Mix Fluid Gal	Rate bbl/min	Total Mix Fluid Gal	
1	11.5 lb/gal Tuned Spacer III	Tuned Spacer III	50	bbl	11.5	3.74		4		
0.50 gal/bbl		D-AIR 3000L, 5 GAL PAIL (101007444)								
149.34 lbm/bbl		BARITE, BULK (100003681)								

35.40 gal/bbl	FRESH WATER								
0.30 gal/bbl	DUAL SPACER SURFACTANT B, 5 GAL PAIL (100003665)								
0.30 gal/bbl	MUSOL A, 330 GAL TOTE - (790828)								
Fluid #	Stage Type	Fluid Name	Qty	Qty UoM	Mixing Density lbm/gal	Yield ft3/sack	Mix Fluid Gal	Rate bbl/min	Total Mix Fluid Gal
2	ElastiCem Lead	ELASTICEM (TM) SYSTEM	150	sack	13.2	1.57		5	7.48
7.48 Gal	FRESH WATER								
0.25 lbm	POLY-E-FLAKE (101216940)								
0.90 %	HR-5, 50 LB SK (100005050)								
Fluid #	Stage Type	Fluid Name	Qty	Qty UoM	Mixing Density lbm/gal	Yield ft3/sack	Mix Fluid Gal	Rate bbl/min	Total Mix Fluid Gal
3	ElastiCem W/ Super CBL	ELASTICEM (TM) SYSTEM	2000	sack	13.2	1.57		6.5	7.49
7.49 Gal	FRESH WATER								
0.25 lbm	POLY-E-FLAKE (101216940)								
0.80 %	HR-5, 50 LB SK (100005050)								
Fluid #	Stage Type	Fluid Name	Qty	Qty UoM	Mixing Density lbm/gal	Yield ft3/sack	Mix Fluid Gal	Rate bbl/min	Total Mix Fluid Gal
4	Displacement	Displacement	376	bbl	8.33			8	
Cement Left In Pipe	Amount	ft	Reason				Shoe Joint		
Comment									

2.0 Real-Time Job Summary

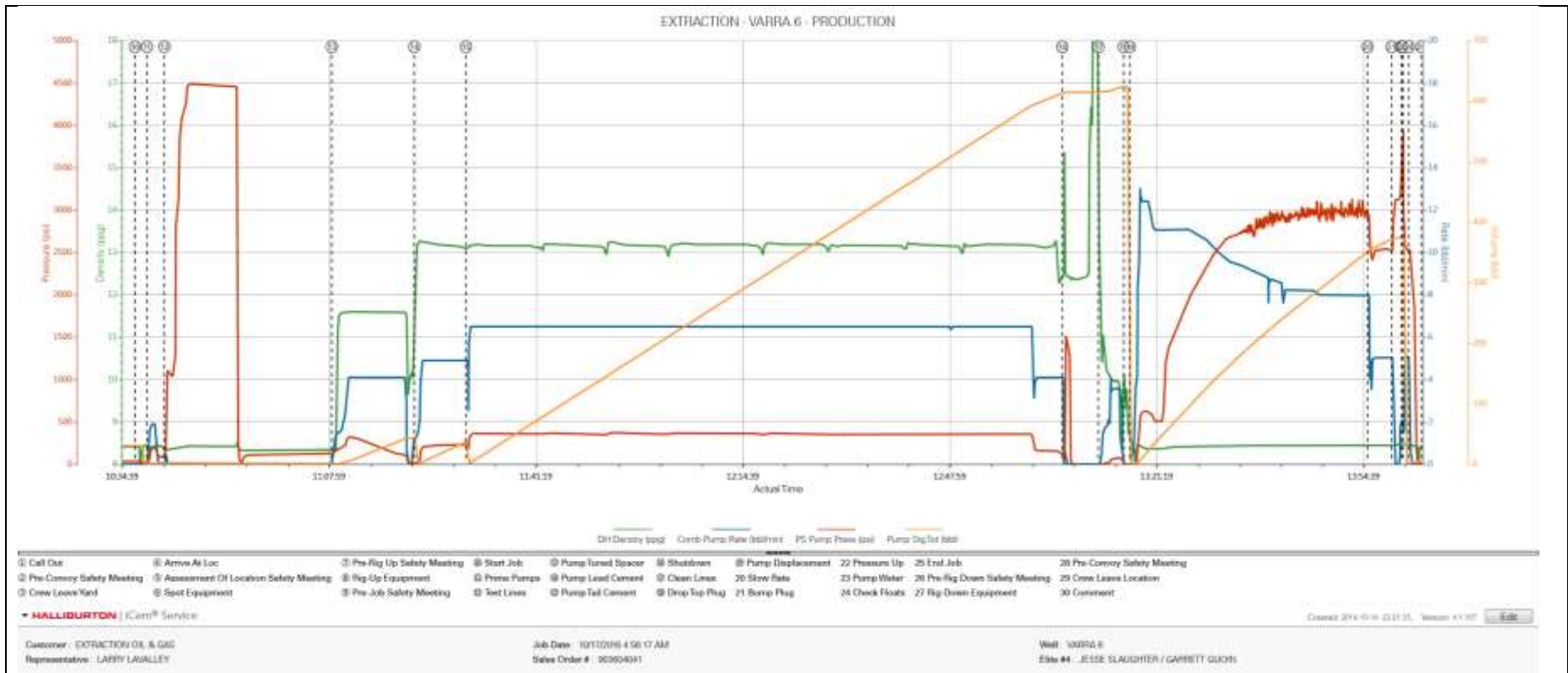
2.1 Job Event Log

Type	Seq. No.	Activity	Graph Label	Date	Time	Source	Comments
Event	1	Call Out	Call Out	10/17/2016	22:00:00	USER	
Event	2	Pre-Convoy Safety Meeting	Pre-Convoy Safety Meeting	10/17/2016	01:50:00	USER	WITH ALL HES PERSONNEL
Event	3	Crew Leave Yard	Crew Leave Yard	10/17/2016	02:00:00	USER	
Event	4	Arrive At Loc	Arrive At Loc	10/17/2016	03:30:00	USER	RIG WAS RUNNING CASING UPON HES ARRIVAL
Event	5	Assessment Of Location Safety Meeting	Assessment Of Location Safety Meeting	10/17/2016	03:40:00	USER	WITH ALL HES PERSONNEL
Event	6	Other	Spot Equipment	10/17/2016	03:50:00	USER	
Event	7	Pre-Rig Up Safety Meeting	Pre-Rig Up Safety Meeting	10/17/2016	04:00:00	USER	WITH ALL HES PERSONNEL
Event	8	Rig-Up Equipment	Rig-Up Equipment	10/17/2016	04:10:00	USER	1 ELITE, 1 BATCH MIXER, 1 660 BULK TRUCK, 2 FIELD BINS
Event	9	Pre-Job Safety Meeting	Pre-Job Safety Meeting	10/17/2016	10:15:00	USER	WITH ALL PERSONNEL
Event	10	Start Job	Start Job	10/17/2016	10:37:00	USER	TD 17002 FT, TP 17004 FT, SHOE 5 FT, CSG 5 1/2 IN 20 LB/FT, HOLE 7 7/8 IN, MUD WT 8 .4 PPG, TVD 7100 FT, PREVIOUS CSG 9 5/8 IN 36 LB/FT SET AT 1609 FT
Event	11	Prime Pumps	Prime Pumps	10/17/2016	10:38:57	USER	FRESH WATER
Event	12	Test Lines	Test Lines	10/17/2016	10:41:44	USER	TESTED LINES TO 4510 PSI PRESSURE HOLDING
Event	13	Pump Spacer 1	Pump Tuned Spacer	10/17/2016	11:08:43	COM4	WITH 15 GAL MUSOL A, 15 GAL DUAL SPACER B AND 25 GAL D-AIR
Event	14	Pump Lead Cement	Pump Lead Cement	10/17/2016	11:22:00	COM4	150 SKS AT 13.2 PPG, 1.57 FT3/SK, 7.48 GAL/SK. WITHOUT SUPER CBL
Event	15	Pump Tail Cement	Pump Tail Cement	10/17/2016	11:30:19	COM4	2000 SKS AT 13.2 PPG, 1.57 FT3/SK, 7.49 GAL/SK
Event	16	Shutdown	Shutdown	10/17/2016	13:06:25	USER	
Event	17	Clean Lines	Clean Lines	10/17/2016	13:12:14	USER	CLEANED PUMPS AND LINES TO RIG TANK
Event	18	Drop Top Plug	Drop Top Plug	10/17/2016	13:16:19	COM4	PLUG LAUNCHED. SUPPLIED BY KLX

Event	19	Pump Displacement	Pump Displacement	10/17/2016	13:17:18	COM4	FRESH WATER
Event	20	Slow Rate	Slow Rate	10/17/2016	13:55:35	USER	SLOWED RATE 20 BBLs PRIOR TO CALCULATED DISPLACEMENT.
Event	21	Bump Plug	Bump Plug	10/17/2016	13:59:29	USER	
Event	22	Pressure Up	Pressure Up	10/17/2016	14:01:02	USER	BURST TOE SLEEVE
Event	23	Pump Water	Pump Water	10/17/2016	14:01:18	USER	PUMPED 5 BBL WET SHOE AS PER COMPANY REP.
Event	24	Check Floats	Check Floats	10/17/2016	14:02:14	USER	FLOATS HOLDING HES RETURNED 2 1/2 BBLs H2O TO PUMP.
Event	25	End Job	End Job	10/17/2016	14:04:16	COM4	PIPE WAS STATIC DURING JOB, GOOD CIRCULATION THROUGHOUT JOB. HES RETURNED 70 BBLs CEMENT TO SURFACE. CHARGED 3 ADD HOURS FOR JOB.
Event	26	Pre-Rig Down Safety Meeting	Pre-Rig Down Safety Meeting	10/17/2016	14:10:00	USER	WITH ALL HES PERSONNEL
Event	27	Rig-Down Equipment	Rig-Down Equipment	10/17/2016	14:15:00	USER	
Event	28	Pre-Convoy Safety Meeting	Pre-Convoy Safety Meeting	10/17/2016	15:50:00	USER	WITH ALL HES PERSONNEL
Event	29	Crew Leave Location	Crew Leave Location	10/17/2016	16:00:00	USER	
Event	30	Comment	Comment	10/17/2016	16:01:00	USER	THANK YOU FOR USING HALLIBURTON CEMENT DEPARTMENT. JESSE SLAUGHTER AND CREW.

3.0 Attachments

3.1 CHART.png



3.2 NO LEGEND.png

