

HALLIBURTON

iCem[®] Service

EXTRACTION OIL & GAS

Date: Wednesday, August 10, 2016

Varra #5

Surface

Job Date: Tuesday, August 09, 2016

Sincerely,

Lauren Roberts

Legal Notice

Warning Disclaimer

Although the information contained in this report is based on sound engineering practices, the copyright owner(s) does (do) not accept any responsibility whatsoever, in negligence or otherwise, for any loss or damage arising from the possession or use of the report whether in terms of correctness or otherwise. The application, therefore, by the user of this report or any part thereof, is solely at the user's own risk.

Limitations of Liability

Except as expressly set forth herein, there are no representations or warranties by Halliburton, express or implied, including implied warranties of merchantability and/or fitness for a particular purpose. In no event will Halliburton or its suppliers be liable for consequential, incidental, special, punitive or exemplary damages (including, without limitation, loss of data, profits, use of hardware, or software). Customer accepts full responsibility for any investment made based on results from the Software. Any interpretations, analyses or modeling of any data, including, but not limited to Customer data, and any recommendation or decisions based upon such interpretations, analyses or modeling are opinions based upon inferences from measurements and empirical relationships and assumptions, which inferences and assumptions are not infallible, and with respect to which professional may differ. Accordingly, Halliburton cannot and does not warrant the accuracy, correctness or completeness of any such interpretation, recommendation, modeling or other products of the Software Product. As such, any interpretation, recommendation or modeling resulting from the Software for the purpose of any drilling, well treatment, production or financial decision will be at the sole risk of Customer. Under no circumstances will Halliburton or its suppliers be liable for any damages.

Table of Contents

1.0 Cementing Job Summary 4

 1.1 Executive Summary4

2.0 Real-Time Job Summary 7

 2.1 Job Event Log7

3.0 Attachments..... 9

 3.1 Extraction Oil & Gas.png9

 3.2 Extraction Oil & Gas-Cement.png10

1.0 Cementing Job Summary

1.1 Executive Summary

Halliburton appreciates the opportunity to perform the cementing services on the **Varra #5** cement **Surface** casing job. A pre-job safety meeting was held before the job where details of the job were discussed, potential safety hazards were reviewed, and environmental compliance procedures were outlined.

29 bbl. of cement returned to surface.

Halliburton maintains a continuous quality improvement process and appreciates any comments or suggestions that you may have. Halliburton again thanks you for the opportunity to perform service work on this well. We hope to be your solutions provider for future projects.

Respectfully,

Halliburton [Ft. Lupton]

The Road to Excellence Starts with Safety

Sold To #: 369404		Ship To #: 3563459		Quote #:		Sales Order #: 0903445793					
Customer: EXTRACTION OIL & GAS -				Customer Rep: Todd							
Well Name: VARRA			Well #: 5		API/UWI #: 05-123-39985-00						
Field: WATTENBERG		City (SAP): WINDSOR		County/Parish: WELD		State: COLORADO					
Legal Description: NW SW-5-6N-67W-1641FSL-789FWL											
Contractor: UNKNOWN				Rig/Platform Name/Num: WORKOVER RIG							
Job BOM: 7521											
Well Type: HORIZONTAL OIL											
Sales Person: HALAMERICA\HB71271				Srv Supervisor: Steve McCoy							
Job											
Formation Name											
Formation Depth (MD)		Top		Bottom							
Form Type				BHST							
Job depth MD		1592ft		Job Depth TVD							
Water Depth				Wk Ht Above Floor		4ft					
Perforation Depth (MD)		From		To							
Well Data											
Description	New / Used	Size in	ID in	Weight lbm/ft	Thread	Grade	Top MD ft	Bottom MD ft	Top TVD ft	Bottom TVD ft	
Casing		9.625	8.921	36			0	1592	0	1592	
Open Hole Section			13.5				0	1592	0	1592	
Tools and Accessories											
Type	Size in	Qty	Make	Depth ft		Type	Size in	Qty	Make		
Guide Shoe	9.625	1		1592		Top Plug	9.625	1	HES		
Float Shoe	9.625	1				Bottom Plug	9.625	1	HES		
Float Collar	9.625	1				SSR plug set	9.625	1	HES		
Insert Float	9.625	1				Plug Container	9.625	1	HES		
Stage Tool	9.625	1				Centralizers	9.625	1	HES		
Miscellaneous Materials											
Gelling Agt		Conc		Surfactant		Conc		Acid Type		Qty	Conc
Treatment Fld		Conc		Inhibitor		Conc		Sand Type		Size	Qty
Fluid Data											
Stage/Plug #: 1											
Fluid #	Stage Type	Fluid Name			Qty	Qty UoM	Mixing Density lbm/gal	Yield ft3/sack	Mix Fluid Gal	Rate bbl/min	Total Mix Fluid Gal
1	Fresh Water	Fresh Water			10	bbl	8.33			1	

Fluid #	Stage Type	Fluid Name	Qty	Qty UoM	Mixing Density lbm/gal	Yield ft3/sack	Mix Fluid Gal	Rate bbl/min	Total Mix Fluid Gal
2	SwiftCem	SWIFTCEM (TM) SYSTEM	565	sack	13.5	1.74		6	9.19
9.19 Gal		FRESH WATER							
Fluid #	Stage Type	Fluid Name	Qty	Qty UoM	Mixing Density lbm/gal	Yield ft3/sack	Mix Fluid Gal	Rate bbl/min	Total Mix Fluid Gal
3	Fresh Water Displacement	Fresh Water Displacement	119.5	bbl	8.33			7	
Cement Left In Pipe		Amount	45ft		Reason		Shoe Joint		
Comment									

2.0 Real-Time Job Summary

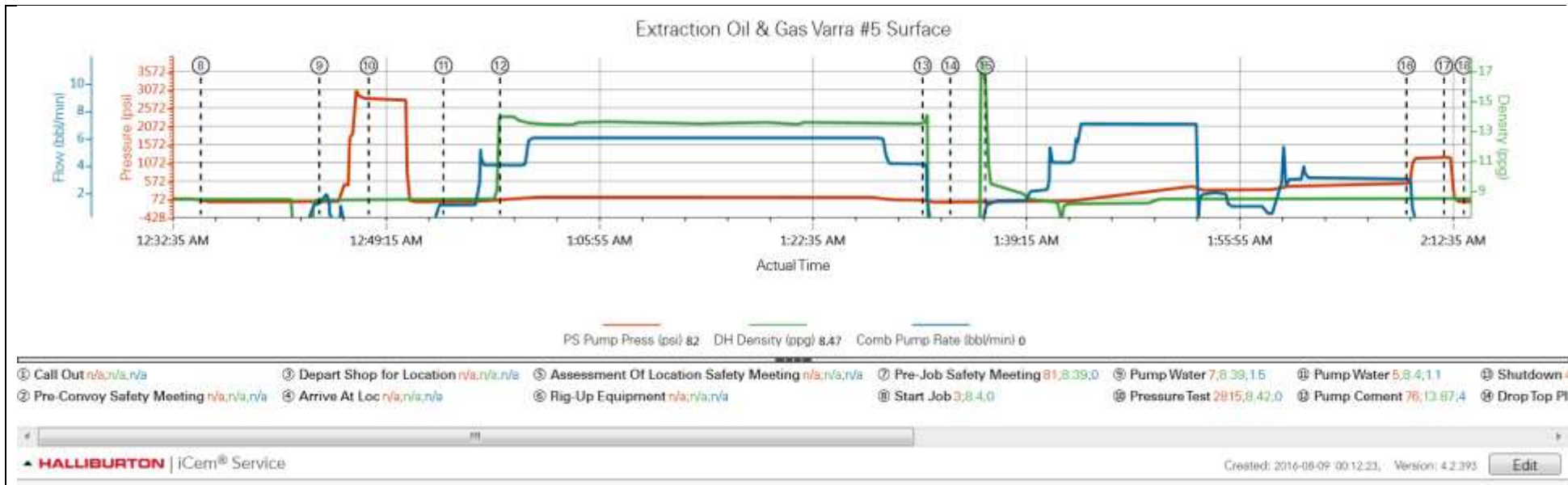
2.1 Job Event Log

Type	Seq. No.	Activity	Graph Label	Date	Time	Source	Pass-Side Pump Pressure (psi)	Downhole Density (ppg)	Combined Pump Rate (bbl/min)	Comments
Event	1	Call Out	Call Out	8/8/2016	19:00:00	USER				Requested on Location @ 2400
Event	2	Pre-Convoy Safety Meeting	Pre-Convoy Safety Meeting	8/8/2016	21:45:00	USER				
Event	3	Depart Shop for Location	Depart Shop for Location	8/8/2016	21:50:00	USER				
Event	4	Arrive At Loc	Arrive At Loc	8/8/2016	23:00:00	USER				
Event	5	Assessment Of Location Safety Meeting	Assessment Of Location Safety Meeting	8/8/2016	23:00:01	USER				Discussed well site hazards and spotting equipment
Event	6	Rig-Up Equipment	Rig-Up Equipment	8/8/2016	23:15:00	USER				Spot and rig up
Event	7	Casing on Bottom	Casing on Bottom	8/9/2016	00:00:00	USER				
Event	8	Pre-Job Safety Meeting	Pre-Job Safety Meeting	8/9/2016	00:27:17	USER	81.00	8.39	0.00	Discussed job procedures and hazards
Event	9	Start Job	Start Job	8/9/2016	00:35:00	COM16	3.00	8.40	0.00	
Event	10	Pump Water	Pump Water	8/9/2016	00:44:16	USER	7.00	8.39	1.50	Fill Pumps & Lines 2 bpm 20 PSI
Event	11	Pressure Test	Pressure Test	8/9/2016	00:48:07	USER	2815.00	8.42	0.00	Good test no leaks
Event	12	Pump Water	Pump Water	8/9/2016	00:53:57	USER	5.00	8.40	1.10	Pump dyed water spacer 1 bpm 20 psi 8 bbls
Event	13	Pump Cement	Pump Cement	8/9/2016	00:58:22	USER	76.00	13.87	4.00	Mixed & Pumped 565 sks SwiftCem @ 13.5 PPG. 1.74 Y, 9.2 GPS
Event	14	Shutdown	Shutdown	8/9/2016	01:31:22	USER	49.00	13.55	4.10	
Event	15	Drop Top Plug	Drop Top Plug	8/9/2016	01:33:32	USER	-12.00	-1.88	0.00	Witnessed by CO MAN
Event	16	Pump Displacement	Pump Displacement	8/9/2016	01:36:16	USER	-2.00	11.31	1.10	Fresh Water 119.5 bbls
Event	17	Bump Plug	Bump Plug	8/9/2016	02:09:10	COM16	509.00	8.45	3.00	Final circulating pressure was 500 psi brought pressure up to 1200 psi

Event	18	Check Floats	Check Floats	8/9/2016	02:12:05	USER	1221.00	8.45	0.00	Floats held 1 bbl back to truck
Event	19	End Job	End Job	8/9/2016	02:13:39	COM16	-5.00	8.45	0.00	
Event	20	Cement Returns to Surface	Cement Returns to Surface	8/9/2016	02:14:00	USER	-5.00	8.45	0.00	29 bbls cement to surface
Event	21	Post-Job Safety Meeting (Pre Rig-Down)	Post-Job Safety Meeting (Pre Rig-Down)	8/9/2016	02:20:00	USER	306.00	8.47	8.30	
Event	22	Rig-Down Equipment	Rig-Down Equipment	8/9/2016	02:30:00	USER				Rig down and wash up pump
Event	23	Pre-Convoy Safety Meeting	Pre-Convoy Safety Meeting	8/9/2016	03:30:00	USER				
Event	24	Depart Location for Shop	Depart Location for Shop	8/9/2016	03:40:00	USER				

3.0 Attachments

3.1 Extraction Oil & Gas.png



3.2 Extraction Oil & Gas-Cement.png

