

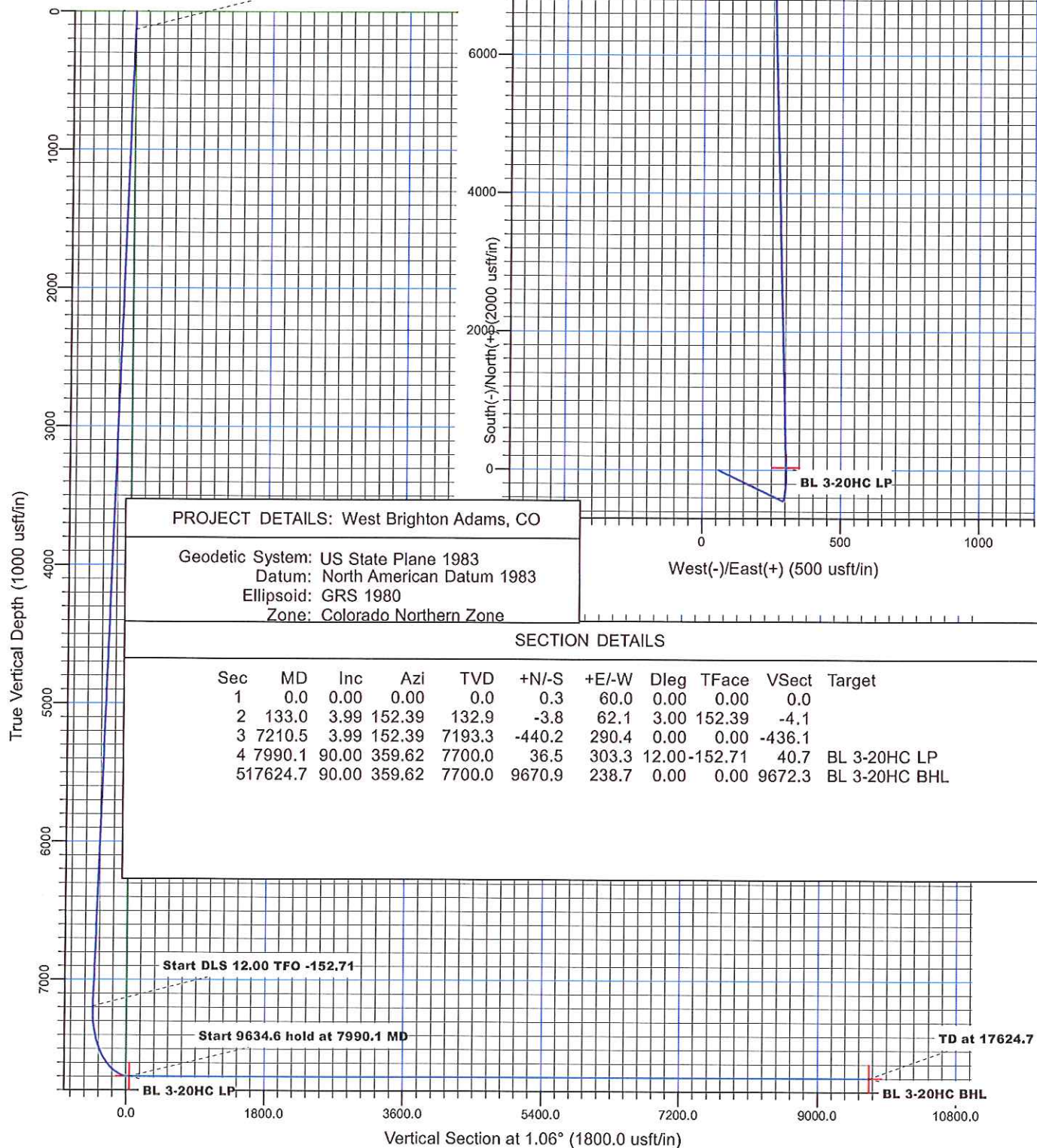


WARD PETROLEUM

WELL DETAILS: Brighton Lakes #2017-3-20HC

Ground Level: 5047.0
Northing 1223392.48
Easting 3194816.70
Site Brighton Lakes Pad, Grid North

Start 7077.5 hold at 133.0 MD



Ward Petroleum

West Brighton Adams, CO

Brighton Lakes Pad

Brighton Lakes #2017-3-20HC

State Plan #1

Plan: State Plan #1

Standard Planning Report

30 December, 2016

Planning Report

Database:	EDM 5000.1 Single User Db	Local Co-ordinate Reference:	Site Brighton Lakes Pad
Company:	Ward Petroleum	TVD Reference:	KB @ 5073.0usft
Project:	West Brighton Adams, CO	MD Reference:	KB @ 5073.0usft
Site:	Brighton Lakes Pad	North Reference:	Grid
Well:	Brighton Lakes #2017-3-20HC	Survey Calculation Method:	Minimum Curvature
Wellbore:	State Plan #1		
Design:	State Plan #1		

Project	West Brighton Adams, CO		
Map System:	US State Plane 1983	System Datum:	Ground Level
Geo Datum:	North American Datum 1983		
Map Zone:	Colorado Northern Zone		

Site		Brighton Lakes Pad			
Site Position:		Northing:	1,223,392.21 usft	Latitude:	39° 56' 40.197 N
From:	Map	Easting:	3,194,756.70 usft	Longitude:	104° 48' 19.368 W
Position Uncertainty:	0.0 usft	Slot Radius:	13-3/16 "	Grid Convergence:	0.45 °

Well		Brighton Lakes #2017-3-20HC				
Well Position	+N/-S	0.3 usft	Northing:	1,223,392.48 usft	Latitude:	39° 56' 40.195 N
	+E/-W	60.0 usft	Easting:	3,194,816.70 usft	Longitude:	104° 48' 18.597 W
Position Uncertainty		0.0 usft	Wellhead Elevation:	0.0 usft	Ground Level:	5,047.0 usft

Wellbore	State Plan #1				
Magnetics	Model Name	Sample Date	Declination (°)	Dip Angle (°)	Field Strength (nT)
	IGRF200510	12/31/2009	9.00	66.73	53,016

Design	State Plan #1			
Audit Notes:				
Version:	Phase:	PROTOTYPE	Tie On Depth:	0.0
Vertical Section:	Depth From (TVD) (usft)	+N/-S (usft)	+E/-W (usft)	Direction (°)
	0.0	0.3	60.0	1.06

Plan Sections										
Measured Depth (usft)	Inclination (°)	Azimuth (°)	Vertical Depth (usft)	+N/-S (usft)	+E/-W (usft)	Dogleg Rate (°/100usft)	Build Rate (°/100usft)	Turn Rate (°/100usft)	TFO (°)	Target
0.0	0.00	0.00	0.0	0.3	60.0	0.00	0.00	0.00	0.00	
133.0	3.99	152.39	132.9	-3.8	62.1	3.00	3.00	0.00	152.39	
7,210.5	3.99	152.39	7,193.3	-440.2	290.4	0.00	0.00	0.00	0.00	
7,990.1	90.00	359.62	7,700.0	36.5	303.3	12.00	11.03	-19.60	-152.71	BL 3-20HC LP
17,624.7	90.00	359.62	7,700.0	9,670.9	238.7	0.00	0.00	0.00	0.00	BL 3-20HC BHL

Planning Report

Database:	EDM 5000.1 Single User Db	Local Co-ordinate Reference:	Site Brighton Lakes Pad
Company:	Ward Petroleum	TVD Reference:	KB @ 5073.0usft
Project:	West Brighton Adams, CO	MD Reference:	KB @ 5073.0usft
Site:	Brighton Lakes Pad	North Reference:	Grid
Well:	Brighton Lakes #2017-3-20HC	Survey Calculation Method:	Minimum Curvature
Wellbore:	State Plan #1		
Design:	State Plan #1		

Planned Survey									
Measured Depth (usft)	Inclination (°)	Azimuth (°)	Vertical Depth (usft)	+N/-S (usft)	+E/-W (usft)	Vertical Section (usft)	Dogleg Rate (°/100usft)	Build Rate (°/100usft)	Turn Rate (°/100usft)
0.0	0.00	0.00	0.0	0.3	60.0	0.0	0.00	0.00	0.00
100.0	3.00	152.39	100.0	-2.0	61.2	-2.3	3.00	3.00	0.00
133.0	3.99	152.39	132.9	-3.8	62.1	-4.1	3.00	3.00	0.00
200.0	3.99	152.39	199.7	-8.0	64.3	-8.2	0.00	0.00	0.00
300.0	3.99	152.39	299.5	-14.1	67.5	-14.3	0.00	0.00	0.00
400.0	3.99	152.39	399.2	-20.3	70.8	-20.4	0.00	0.00	0.00
500.0	3.99	152.39	499.0	-26.5	74.0	-26.5	0.00	0.00	0.00
600.0	3.99	152.39	598.8	-32.6	77.2	-32.6	0.00	0.00	0.00
700.0	3.99	152.39	698.5	-38.8	80.4	-38.7	0.00	0.00	0.00
800.0	3.99	152.39	798.3	-45.0	83.7	-44.8	0.00	0.00	0.00
900.0	3.99	152.39	898.0	-51.1	86.9	-50.9	0.00	0.00	0.00
1,000.0	3.99	152.39	997.8	-57.3	90.1	-57.0	0.00	0.00	0.00
1,100.0	3.99	152.39	1,097.5	-63.4	93.3	-63.1	0.00	0.00	0.00
1,200.0	3.99	152.39	1,197.3	-69.6	96.6	-69.2	0.00	0.00	0.00
1,300.0	3.99	152.39	1,297.1	-75.8	99.8	-75.3	0.00	0.00	0.00
1,400.0	3.99	152.39	1,396.8	-81.9	103.0	-81.4	0.00	0.00	0.00
1,500.0	3.99	152.39	1,496.6	-88.1	106.2	-87.5	0.00	0.00	0.00
1,600.0	3.99	152.39	1,596.3	-94.3	109.5	-93.6	0.00	0.00	0.00
1,700.0	3.99	152.39	1,696.1	-100.4	112.7	-99.7	0.00	0.00	0.00
1,800.0	3.99	152.39	1,795.9	-106.6	115.9	-105.8	0.00	0.00	0.00
1,900.0	3.99	152.39	1,895.6	-112.8	119.1	-111.9	0.00	0.00	0.00
2,000.0	3.99	152.39	1,995.4	-118.9	122.4	-118.0	0.00	0.00	0.00
2,100.0	3.99	152.39	2,095.1	-125.1	125.6	-124.1	0.00	0.00	0.00
2,200.0	3.99	152.39	2,194.9	-131.3	128.8	-130.2	0.00	0.00	0.00
2,300.0	3.99	152.39	2,294.6	-137.4	132.0	-136.3	0.00	0.00	0.00
2,400.0	3.99	152.39	2,394.4	-143.6	135.3	-142.4	0.00	0.00	0.00
2,500.0	3.99	152.39	2,494.2	-149.8	138.5	-148.6	0.00	0.00	0.00
2,600.0	3.99	152.39	2,593.9	-155.9	141.7	-154.7	0.00	0.00	0.00
2,700.0	3.99	152.39	2,693.7	-162.1	144.9	-160.8	0.00	0.00	0.00
2,800.0	3.99	152.39	2,793.4	-168.3	148.2	-166.9	0.00	0.00	0.00
2,900.0	3.99	152.39	2,893.2	-174.4	151.4	-173.0	0.00	0.00	0.00
3,000.0	3.99	152.39	2,992.9	-180.6	154.6	-179.1	0.00	0.00	0.00
3,100.0	3.99	152.39	3,092.7	-186.7	157.8	-185.2	0.00	0.00	0.00
3,200.0	3.99	152.39	3,192.5	-192.9	161.0	-191.3	0.00	0.00	0.00
3,300.0	3.99	152.39	3,292.2	-199.1	164.3	-197.4	0.00	0.00	0.00
3,400.0	3.99	152.39	3,392.0	-205.2	167.5	-203.5	0.00	0.00	0.00
3,500.0	3.99	152.39	3,491.7	-211.4	170.7	-209.6	0.00	0.00	0.00
3,600.0	3.99	152.39	3,591.5	-217.6	173.9	-215.7	0.00	0.00	0.00
3,700.0	3.99	152.39	3,691.2	-223.7	177.2	-221.8	0.00	0.00	0.00
3,800.0	3.99	152.39	3,791.0	-229.9	180.4	-227.9	0.00	0.00	0.00
3,900.0	3.99	152.39	3,890.8	-236.1	183.6	-234.0	0.00	0.00	0.00
4,000.0	3.99	152.39	3,990.5	-242.2	186.8	-240.1	0.00	0.00	0.00
4,100.0	3.99	152.39	4,090.3	-248.4	190.1	-246.2	0.00	0.00	0.00
4,200.0	3.99	152.39	4,190.0	-254.6	193.3	-252.3	0.00	0.00	0.00
4,300.0	3.99	152.39	4,289.8	-260.7	196.5	-258.4	0.00	0.00	0.00
4,400.0	3.99	152.39	4,389.6	-266.9	199.7	-264.5	0.00	0.00	0.00
4,500.0	3.99	152.39	4,489.3	-273.1	203.0	-270.6	0.00	0.00	0.00
4,600.0	3.99	152.39	4,589.1	-279.2	206.2	-276.7	0.00	0.00	0.00
4,700.0	3.99	152.39	4,688.8	-285.4	209.4	-282.8	0.00	0.00	0.00
4,800.0	3.99	152.39	4,788.6	-291.6	212.6	-289.0	0.00	0.00	0.00
4,900.0	3.99	152.39	4,888.3	-297.7	215.9	-295.1	0.00	0.00	0.00
5,000.0	3.99	152.39	4,988.1	-303.9	219.1	-301.2	0.00	0.00	0.00
5,100.0	3.99	152.39	5,087.9	-310.0	222.3	-307.3	0.00	0.00	0.00
5,200.0	3.99	152.39	5,187.6	-316.2	225.5	-313.4	0.00	0.00	0.00

Planning Report

Database:	EDM 5000.1 Single User Db	Local Co-ordinate Reference:	Site Brighton Lakes Pad
Company:	Ward Petroleum	TVD Reference:	KB @ 5073.0usft
Project:	West Brighton Adams, CO	MD Reference:	KB @ 5073.0usft
Site:	Brighton Lakes Pad	North Reference:	Grid
Well:	Brighton Lakes #2017-3-20HC	Survey Calculation Method:	Minimum Curvature
Wellbore:	State Plan #1		
Design:	State Plan #1		

Planned Survey									
Measured Depth (usft)	Inclination (°)	Azimuth (°)	Vertical Depth (usft)	+N/-S (usft)	+E/-W (usft)	Vertical Section (usft)	Dogleg Rate (°/100usft)	Build Rate (°/100usft)	Turn Rate (°/100usft)
5,300.0	3.99	152.39	5,287.4	-322.4	228.8	-319.5	0.00	0.00	0.00
5,400.0	3.99	152.39	5,387.1	-328.5	232.0	-325.6	0.00	0.00	0.00
5,500.0	3.99	152.39	5,486.9	-334.7	235.2	-331.7	0.00	0.00	0.00
5,600.0	3.99	152.39	5,586.6	-340.9	238.4	-337.8	0.00	0.00	0.00
5,700.0	3.99	152.39	5,686.4	-347.0	241.7	-343.9	0.00	0.00	0.00
5,800.0	3.99	152.39	5,786.2	-353.2	244.9	-350.0	0.00	0.00	0.00
5,900.0	3.99	152.39	5,885.9	-359.4	248.1	-356.1	0.00	0.00	0.00
6,000.0	3.99	152.39	5,985.7	-365.5	251.3	-362.2	0.00	0.00	0.00
6,100.0	3.99	152.39	6,085.4	-371.7	254.6	-368.3	0.00	0.00	0.00
6,200.0	3.99	152.39	6,185.2	-377.9	257.8	-374.4	0.00	0.00	0.00
6,300.0	3.99	152.39	6,284.9	-384.0	261.0	-380.5	0.00	0.00	0.00
6,400.0	3.99	152.39	6,384.7	-390.2	264.2	-386.6	0.00	0.00	0.00
6,500.0	3.99	152.39	6,484.5	-396.4	267.5	-392.7	0.00	0.00	0.00
6,600.0	3.99	152.39	6,584.2	-402.5	270.7	-398.8	0.00	0.00	0.00
6,700.0	3.99	152.39	6,684.0	-408.7	273.9	-404.9	0.00	0.00	0.00
6,800.0	3.99	152.39	6,783.7	-414.9	277.1	-411.0	0.00	0.00	0.00
6,900.0	3.99	152.39	6,883.5	-421.0	280.4	-417.1	0.00	0.00	0.00
7,000.0	3.99	152.39	6,983.3	-427.2	283.6	-423.2	0.00	0.00	0.00
7,100.0	3.99	152.39	7,083.0	-433.3	286.8	-429.4	0.00	0.00	0.00
7,200.0	3.99	152.39	7,182.8	-439.5	290.0	-435.5	0.00	0.00	0.00
7,210.5	3.99	152.39	7,193.3	-440.2	290.4	-436.1	0.00	0.00	0.00
7,300.0	7.42	13.80	7,282.5	-437.3	293.2	-433.2	12.00	3.83	-154.87
7,400.0	19.28	4.85	7,379.7	-414.5	296.2	-410.3	12.00	11.86	-8.95
7,500.0	31.24	2.63	7,469.9	-372.0	298.8	-367.8	12.00	11.96	-2.22
7,600.0	43.22	1.56	7,549.4	-311.6	300.9	-307.4	12.00	11.98	-1.07
7,700.0	55.21	0.89	7,614.6	-236.1	302.5	-231.8	12.00	11.99	-0.68
7,800.0	67.20	0.38	7,662.7	-148.6	303.4	-144.4	12.00	11.99	-0.50
7,900.0	79.20	359.96	7,691.5	-53.0	303.7	-48.8	12.00	11.99	-0.42
7,990.1	90.00	359.62	7,700.0	36.5	303.3	40.7	12.00	11.99	-0.39
8,000.0	90.00	359.62	7,700.0	46.4	303.3	50.6	0.00	0.00	0.00
8,100.0	90.00	359.62	7,700.0	146.4	302.6	150.6	0.00	0.00	0.00
8,200.0	90.00	359.62	7,700.0	246.4	301.9	250.6	0.00	0.00	0.00
8,300.0	90.00	359.62	7,700.0	346.4	301.3	350.5	0.00	0.00	0.00
8,400.0	90.00	359.62	7,700.0	446.4	300.6	450.5	0.00	0.00	0.00
8,500.0	90.00	359.62	7,700.0	546.4	299.9	550.5	0.00	0.00	0.00
8,600.0	90.00	359.62	7,700.0	646.4	299.3	650.4	0.00	0.00	0.00
8,700.0	90.00	359.62	7,700.0	746.4	298.6	750.4	0.00	0.00	0.00
8,800.0	90.00	359.62	7,700.0	846.4	297.9	850.4	0.00	0.00	0.00
8,900.0	90.00	359.62	7,700.0	946.4	297.2	950.4	0.00	0.00	0.00
9,000.0	90.00	359.62	7,700.0	1,046.4	296.6	1,050.3	0.00	0.00	0.00
9,100.0	90.00	359.62	7,700.0	1,146.4	295.9	1,150.3	0.00	0.00	0.00
9,200.0	90.00	359.62	7,700.0	1,246.4	295.2	1,250.3	0.00	0.00	0.00
9,300.0	90.00	359.62	7,700.0	1,346.4	294.6	1,350.2	0.00	0.00	0.00
9,400.0	90.00	359.62	7,700.0	1,446.4	293.9	1,450.2	0.00	0.00	0.00
9,500.0	90.00	359.62	7,700.0	1,546.4	293.2	1,550.2	0.00	0.00	0.00
9,600.0	90.00	359.62	7,700.0	1,646.4	292.5	1,650.1	0.00	0.00	0.00
9,700.0	90.00	359.62	7,700.0	1,746.4	291.9	1,750.1	0.00	0.00	0.00
9,800.0	90.00	359.62	7,700.0	1,846.4	291.2	1,850.1	0.00	0.00	0.00
9,900.0	90.00	359.62	7,700.0	1,946.4	290.5	1,950.0	0.00	0.00	0.00
10,000.0	90.00	359.62	7,700.0	2,046.4	289.9	2,050.0	0.00	0.00	0.00
10,100.0	90.00	359.62	7,700.0	2,146.4	289.2	2,150.0	0.00	0.00	0.00
10,200.0	90.00	359.62	7,700.0	2,246.4	288.5	2,249.9	0.00	0.00	0.00
10,300.0	90.00	359.62	7,700.0	2,346.4	287.8	2,349.9	0.00	0.00	0.00
10,400.0	90.00	359.62	7,700.0	2,446.4	287.2	2,449.9	0.00	0.00	0.00

Planning Report

Database:	EDM 5000.1 Single User Db	Local Co-ordinate Reference:	Site Brighton Lakes Pad
Company:	Ward Petroleum	TVD Reference:	KB @ 5073.0usft
Project:	West Brighton Adams, CO	MD Reference:	KB @ 5073.0usft
Site:	Brighton Lakes Pad	North Reference:	Grid
Well:	Brighton Lakes #2017-3-20HC	Survey Calculation Method:	Minimum Curvature
Wellbore:	State Plan #1		
Design:	State Plan #1		

Planned Survey										
Measured Depth (usft)	Inclination (°)	Azimuth (°)	Vertical Depth (usft)	+N/-S (usft)	+E/-W (usft)	Vertical Section (usft)	Dogleg Rate (°/100usft)	Build Rate (°/100usft)	Turn Rate (°/100usft)	
10,500.0	90.00	359.62	7,700.0	2,546.4	286.5	2,549.8	0.00	0.00	0.00	
10,600.0	90.00	359.62	7,700.0	2,646.4	285.8	2,649.8	0.00	0.00	0.00	
10,700.0	90.00	359.62	7,700.0	2,746.4	285.2	2,749.8	0.00	0.00	0.00	
10,800.0	90.00	359.62	7,700.0	2,846.4	284.5	2,849.7	0.00	0.00	0.00	
10,900.0	90.00	359.62	7,700.0	2,946.4	283.8	2,949.7	0.00	0.00	0.00	
11,000.0	90.00	359.62	7,700.0	3,046.4	283.1	3,049.7	0.00	0.00	0.00	
11,100.0	90.00	359.62	7,700.0	3,146.3	282.5	3,149.7	0.00	0.00	0.00	
11,200.0	90.00	359.62	7,700.0	3,246.3	281.8	3,249.6	0.00	0.00	0.00	
11,300.0	90.00	359.62	7,700.0	3,346.3	281.1	3,349.6	0.00	0.00	0.00	
11,400.0	90.00	359.62	7,700.0	3,446.3	280.5	3,449.6	0.00	0.00	0.00	
11,500.0	90.00	359.62	7,700.0	3,546.3	279.8	3,549.5	0.00	0.00	0.00	
11,600.0	90.00	359.62	7,700.0	3,646.3	279.1	3,649.5	0.00	0.00	0.00	
11,700.0	90.00	359.62	7,700.0	3,746.3	278.4	3,749.5	0.00	0.00	0.00	
11,800.0	90.00	359.62	7,700.0	3,846.3	277.8	3,849.4	0.00	0.00	0.00	
11,900.0	90.00	359.62	7,700.0	3,946.3	277.1	3,949.4	0.00	0.00	0.00	
12,000.0	90.00	359.62	7,700.0	4,046.3	276.4	4,049.4	0.00	0.00	0.00	
12,100.0	90.00	359.62	7,700.0	4,146.3	275.8	4,149.3	0.00	0.00	0.00	
12,200.0	90.00	359.62	7,700.0	4,246.3	275.1	4,249.3	0.00	0.00	0.00	
12,300.0	90.00	359.62	7,700.0	4,346.3	274.4	4,349.3	0.00	0.00	0.00	
12,400.0	90.00	359.62	7,700.0	4,446.3	273.7	4,449.2	0.00	0.00	0.00	
12,500.0	90.00	359.62	7,700.0	4,546.3	273.1	4,549.2	0.00	0.00	0.00	
12,600.0	90.00	359.62	7,700.0	4,646.3	272.4	4,649.2	0.00	0.00	0.00	
12,700.0	90.00	359.62	7,700.0	4,746.3	271.7	4,749.1	0.00	0.00	0.00	
12,800.0	90.00	359.62	7,700.0	4,846.3	271.1	4,849.1	0.00	0.00	0.00	
12,900.0	90.00	359.62	7,700.0	4,946.3	270.4	4,949.1	0.00	0.00	0.00	
13,000.0	90.00	359.62	7,700.0	5,046.3	269.7	5,049.0	0.00	0.00	0.00	
13,100.0	90.00	359.62	7,700.0	5,146.3	269.0	5,149.0	0.00	0.00	0.00	
13,200.0	90.00	359.62	7,700.0	5,246.3	268.4	5,249.0	0.00	0.00	0.00	
13,300.0	90.00	359.62	7,700.0	5,346.3	267.7	5,349.0	0.00	0.00	0.00	
13,400.0	90.00	359.62	7,700.0	5,446.3	267.0	5,448.9	0.00	0.00	0.00	
13,500.0	90.00	359.62	7,700.0	5,546.3	266.4	5,548.9	0.00	0.00	0.00	
13,600.0	90.00	359.62	7,700.0	5,646.3	265.7	5,648.9	0.00	0.00	0.00	
13,700.0	90.00	359.62	7,700.0	5,746.3	265.0	5,748.8	0.00	0.00	0.00	
13,800.0	90.00	359.62	7,700.0	5,846.3	264.3	5,848.8	0.00	0.00	0.00	
13,900.0	90.00	359.62	7,700.0	5,946.3	263.7	5,948.8	0.00	0.00	0.00	
14,000.0	90.00	359.62	7,700.0	6,046.3	263.0	6,048.7	0.00	0.00	0.00	
14,100.0	90.00	359.62	7,700.0	6,146.3	262.3	6,148.7	0.00	0.00	0.00	
14,200.0	90.00	359.62	7,700.0	6,246.3	261.7	6,248.7	0.00	0.00	0.00	
14,300.0	90.00	359.62	7,700.0	6,346.3	261.0	6,348.6	0.00	0.00	0.00	
14,400.0	90.00	359.62	7,700.0	6,446.3	260.3	6,448.6	0.00	0.00	0.00	
14,500.0	90.00	359.62	7,700.0	6,546.3	259.6	6,548.6	0.00	0.00	0.00	
14,600.0	90.00	359.62	7,700.0	6,646.3	259.0	6,648.5	0.00	0.00	0.00	
14,700.0	90.00	359.62	7,700.0	6,746.3	258.3	6,748.5	0.00	0.00	0.00	
14,800.0	90.00	359.62	7,700.0	6,846.3	257.6	6,848.5	0.00	0.00	0.00	
14,900.0	90.00	359.62	7,700.0	6,946.3	257.0	6,948.4	0.00	0.00	0.00	
15,000.0	90.00	359.62	7,700.0	7,046.3	256.3	7,048.4	0.00	0.00	0.00	
15,100.0	90.00	359.62	7,700.0	7,146.3	255.6	7,148.4	0.00	0.00	0.00	
15,200.0	90.00	359.62	7,700.0	7,246.3	254.9	7,248.4	0.00	0.00	0.00	
15,300.0	90.00	359.62	7,700.0	7,346.3	254.3	7,348.3	0.00	0.00	0.00	
15,400.0	90.00	359.62	7,700.0	7,446.3	253.6	7,448.3	0.00	0.00	0.00	
15,500.0	90.00	359.62	7,700.0	7,546.3	252.9	7,548.3	0.00	0.00	0.00	
15,600.0	90.00	359.62	7,700.0	7,646.2	252.3	7,648.2	0.00	0.00	0.00	
15,700.0	90.00	359.62	7,700.0	7,746.2	251.6	7,748.2	0.00	0.00	0.00	
15,800.0	90.00	359.62	7,700.0	7,846.2	250.9	7,848.2	0.00	0.00	0.00	

Planning Report

Database:	EDM 5000.1 Single User Db	Local Co-ordinate Reference:	Site Brighton Lakes Pad
Company:	Ward Petroleum	TVD Reference:	KB @ 5073.0usft
Project:	West Brighton Adams, CO	MD Reference:	KB @ 5073.0usft
Site:	Brighton Lakes Pad	North Reference:	Grid
Well:	Brighton Lakes #2017-3-20HC	Survey Calculation Method:	Minimum Curvature
Wellbore:	State Plan #1		
Design:	State Plan #1		

Planned Survey										
Measured Depth (usft)	Inclination (°)	Azimuth (°)	Vertical Depth (usft)	+N/-S (usft)	+E/-W (usft)	Vertical Section (usft)	Dogleg Rate (°/100usft)	Build Rate (°/100usft)	Turn Rate (°/100usft)	
15,900.0	90.00	359.62	7,700.0	7,946.2	250.2	7,948.1	0.00	0.00	0.00	
16,000.0	90.00	359.62	7,700.0	8,046.2	249.6	8,048.1	0.00	0.00	0.00	
16,100.0	90.00	359.62	7,700.0	8,146.2	248.9	8,148.1	0.00	0.00	0.00	
16,200.0	90.00	359.62	7,700.0	8,246.2	248.2	8,248.0	0.00	0.00	0.00	
16,300.0	90.00	359.62	7,700.0	8,346.2	247.6	8,348.0	0.00	0.00	0.00	
16,400.0	90.00	359.62	7,700.0	8,446.2	246.9	8,448.0	0.00	0.00	0.00	
16,500.0	90.00	359.62	7,700.0	8,546.2	246.2	8,547.9	0.00	0.00	0.00	
16,600.0	90.00	359.62	7,700.0	8,646.2	245.5	8,647.9	0.00	0.00	0.00	
16,700.0	90.00	359.62	7,700.0	8,746.2	244.9	8,747.9	0.00	0.00	0.00	
16,800.0	90.00	359.62	7,700.0	8,846.2	244.2	8,847.8	0.00	0.00	0.00	
16,900.0	90.00	359.62	7,700.0	8,946.2	243.5	8,947.8	0.00	0.00	0.00	
17,000.0	90.00	359.62	7,700.0	9,046.2	242.9	9,047.8	0.00	0.00	0.00	
17,100.0	90.00	359.62	7,700.0	9,146.2	242.2	9,147.7	0.00	0.00	0.00	
17,200.0	90.00	359.62	7,700.0	9,246.2	241.5	9,247.7	0.00	0.00	0.00	
17,300.0	90.00	359.62	7,700.0	9,346.2	240.8	9,347.7	0.00	0.00	0.00	
17,400.0	90.00	359.62	7,700.0	9,446.2	240.2	9,447.7	0.00	0.00	0.00	
17,500.0	90.00	359.62	7,700.0	9,546.2	239.5	9,547.6	0.00	0.00	0.00	
17,600.0	90.00	359.62	7,700.0	9,646.2	238.8	9,647.6	0.00	0.00	0.00	
17,624.7	90.00	359.62	7,700.0	9,670.9	238.7	9,672.3	0.00	0.00	0.00	

Design Targets										
Target Name - hit/miss target - Shape	Dip Angle (°)	Dip Dir. (°)	TVD (usft)	+N/-S (usft)	+E/-W (usft)	Northing (usft)	Easting (usft)	Latitude	Longitude	
BL 3-20HC LP - plan hits target center - Point	0.00	0.00	7,700.0	36.5	303.3	1,223,428.70	3,195,060.05	39° 56' 40.534 N	104° 48' 15.469 W	
BL 3-20HC BHL - plan hits target center - Point	0.00	0.00	7,700.0	9,670.9	238.7	1,233,063.13	3,194,995.36	39° 58' 15.751 N	104° 48' 15.329 W	