

**LEGEND:**

- = 90° SYMBOL
- = PROPOSED WELLHEAD.
- = TARGET BOTTOM HOLE.
- ◆ = LANDING POINT.
- ▲ = SECTION CORNERS LOCATED. (NAD 83)

2010 Alum. Cap,  
#22561, 0.5'  
Below Ground In  
Monument Box  
Lat: 39.972308°  
Long: 104.808781°  
SP NAD 83  
(CO. NORTH)  
N: 1233514.52  
E: 3193724.34  
SP NAD 27  
(CO. NORTH)  
N: 233517.21  
E: 2193877.34

**T1S, R66W, 6th P.M.**

1989 Alum. Cap,  
#23519, 0.5'  
Below Ground In  
Monument Box  
Lat: 39.972325°  
Long: 104.789844°  
SP NAD 83  
(CO. NORTH)  
N: 1233562.53  
E: 3199031.36  
SP NAD 27  
(CO. NORTH)  
N: 233565.27  
E: 2199184.27

2006 Alum. Cap,  
#27269, 0.6'  
Below Ground  
Lat: 39.965053°  
Long: 104.808825°  
SP NAD 83  
(CO. NORTH)  
N: 1230871.04  
E: 3193732.32  
SP NAD 27  
(CO. NORTH)  
N: 230873.74  
E: 2193885.35

1997 Alum. Cap,  
#23027, 0.6'  
Below Ground  
Lat: 39.957797°  
Long: 104.808867°  
SP NAD 83  
(CO. NORTH)  
N: 1228228.94  
E: 3193741.07  
SP NAD 27  
(CO. NORTH)  
N: 228231.64  
E: 2193894.12

2007 Alum. Cap,  
#25645, Flush  
With Ground  
Lat: 39.950569°  
Long: 104.808844°  
SP NAD 83  
(CO. NORTH)  
N: 1225595.59  
E: 3193768.03  
SP NAD 27  
(CO. NORTH)  
N: 225598.30  
E: 2193921.11

2001 Alum. Cap,  
#24942, 0.9'  
Below Ground  
Lat: 39.943339°  
Long: 104.808822°  
SP NAD 83  
(CO. NORTH)  
N: 1222962.45  
E: 3193795.13  
SP NAD 27  
(CO. NORTH)  
N: 222965.17  
E: 2193948.24

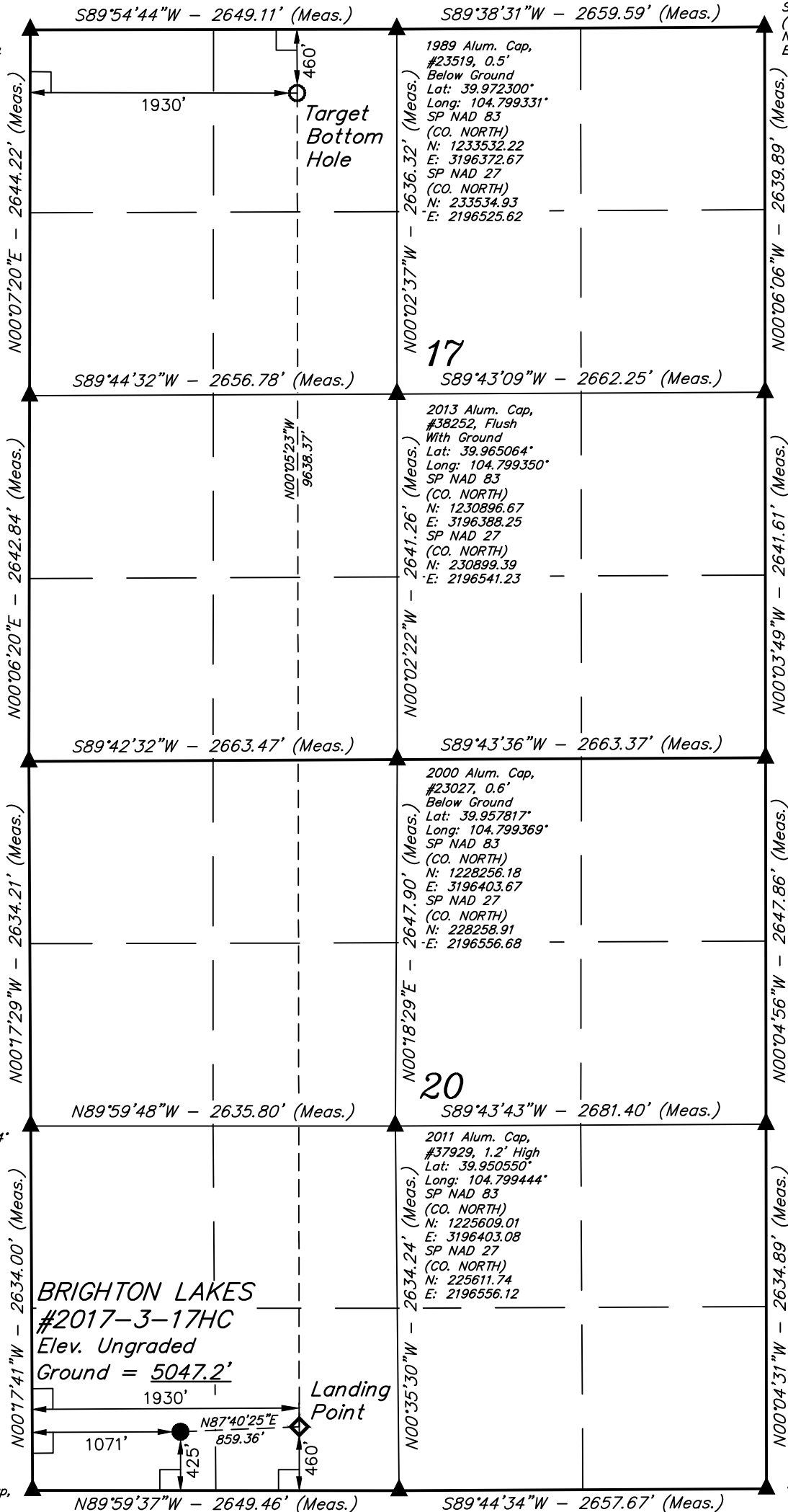
1999 Alum. Cap,  
#24960, 0.9'  
Below Ground  
Lat: 39.943319°  
Long: 104.799375°  
SP NAD 83  
(CO. NORTH)  
N: 1222975.80  
E: 3196443.83  
SP NAD 27  
(CO. NORTH)  
N: 222978.54  
E: 2196596.91

2016 Alum. Cap,  
#28285  
Lat: 39.965081°  
Long: 104.789856°  
SP NAD 83  
(CO. NORTH)  
N: 1230923.44  
E: 3199049.64  
SP NAD 27  
(CO. NORTH)  
N: 230926.18  
E: 2199202.58

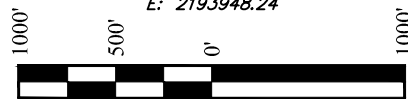
2007 Alum. Cap,  
#30099, 0.6'  
Below Ground  
Lat: 39.957831°  
Long: 104.789869°  
SP NAD 83  
(CO. NORTH)  
N: 1228282.60  
E: 3199066.17  
SP NAD 27  
(CO. NORTH)  
N: 228285.35  
E: 2199219.14

2006 Alum. Cap,  
#30099, 0.3'  
Below Ground  
Lat: 39.950564°  
Long: 104.789883°  
SP NAD 83  
(CO. NORTH)  
N: 1225635.52  
E: 3199083.62  
SP NAD 27  
(CO. NORTH)  
N: 225638.28  
E: 2199236.62

1997 Alum. Cap,  
#23519, 0.6'  
Below Ground  
Lat: 39.943333°  
Long: 104.789897°  
SP NAD 83  
(CO. NORTH)  
N: 1223001.41  
E: 3199100.65  
SP NAD 27  
(CO. NORTH)  
N: 223004.18  
E: 2199253.68



**BRIGHTON LAKES  
#2017-3-17HC  
Elev. Ungraded  
Ground = 5047.2'**



PDOP = 1.8

NAD 83 (SURFACE LOCATION)	NAD 83 (LANDING POINT)	NAD 83 (TARGET BOTTOM HOLE)
LATITUDE = 39°56'40.19" (39.944497)	LATITUDE = 39°56'40.52" (39.944589)	LATITUDE = 39°58'15.74" (39.971039)
LONGITUDE = 104°48'18.02" (104.805006)	LONGITUDE = 104°48'07.00" (104.801944)	LONGITUDE = 104°48'06.85" (104.801903)
NAD 27 (SURFACE LOCATION)	NAD 27 (LANDING POINT)	NAD 27 (TARGET BOTTOM HOLE)
LATITUDE = 39°56'40.25" (39.944514)	LATITUDE = 39°56'40.57" (39.944603)	LATITUDE = 39°58'15.80" (39.971056)
LONGITUDE = 104°48'16.12" (104.804478)	LONGITUDE = 104°48'05.10" (104.801417)	LONGITUDE = 104°48'04.95" (104.801375)
STATE PLANE NAD 83 (CO. NORTH)	STATE PLANE NAD 83 (CO. NORTH)	STATE PLANE NAD 83 (CO. NORTH)
N: 1223392.74 E: 3194861.64	N: 1223432.03 E: 3195719.87	N: 1233067.54 E: 3195655.17
STATE PLANE NAD 27 (CO. NORTH)	STATE PLANE NAD 27 (CO. NORTH)	STATE PLANE NAD 27 (CO. NORTH)
N: 223395.46 E: 2195014.74	N: 223434.76 E: 2195872.95	N: 233070.25 E: 2195808.14

CERTIFICATE OF ACCURACY  
THIS IS TO CERTIFY THAT THE ABOVE PLAT WAS PREPARED FROM FIELD NOTES OF ACTUAL SURVEYS MADE BY ME OR UNDER MY SUPERVISION AND THAT THE SAME ARE TRUE AND CORRECT TO THE BEST OF MY KNOWLEDGE AND BELIEF.



**BASIS OF BEARINGS**  
BASIS OF BEARINGS IS A G.P.S. OBSERVATION

**BASIS OF ELEVATION**

USGS COOPERATIVE BASE NETWORK CONTROL STATION,  
DESIGNATION "JR 53 5026". NGS DATA SHEET LISTS THE NAVD 88  
ELEVATION AS BEING 5028 FEET.



**UELS, LLC**  
Corporate Office \* 85 South 200 East  
Vernal, UT 84078 \* (435) 789-1017



**WARD PETROLEUM CORPORATION**

**BRIGHTON LAKES #2017-3-17HC  
SW 1/4 SW 1/4, SECTION 20, T1S, R66W, 6th P.M.  
ADAMS COUNTY, COLORADO**

<b>SURVEYED BY</b>	DALLAS NIELSEN, N.P.	12-12-16	<b>SCALE</b>
<b>DRAWN BY</b>	K.B.	12-20-16	1" = 1000'

**WELL LOCATION PLAT**