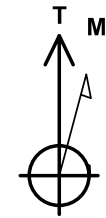




Project: SEC 20-T6N-R66W
 Site: HOOD-DOLES 37-20 PAD
 Well: HOOD 14N-22A-M
 Wellbore: OH
 Design: PLAN #1



Azimuths to True North
 Magnetic North: 8.29°
 Magnetic Field
 Strength: 52482.4snT
 Dip Angle: 66.92°
 Date: 12/15/2016
 Model: IGRF2015

SECTION DETAILS

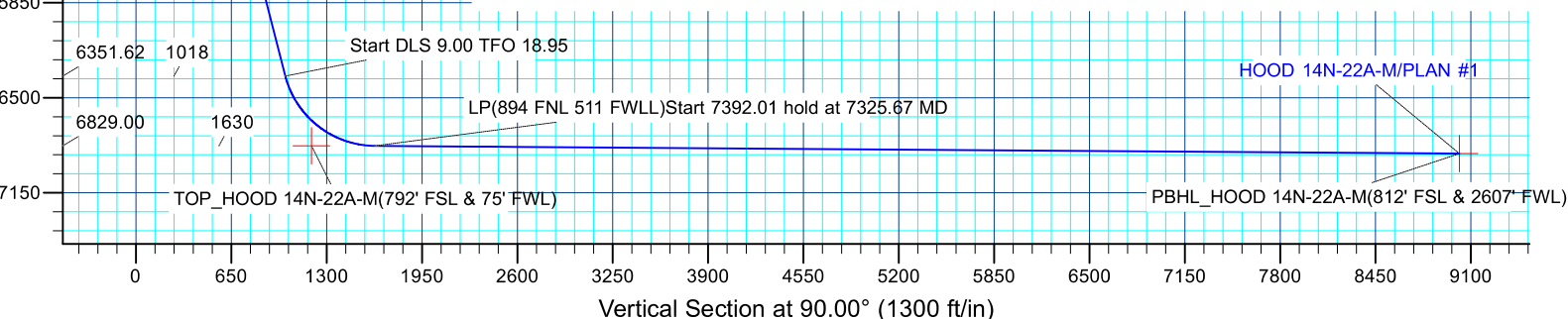
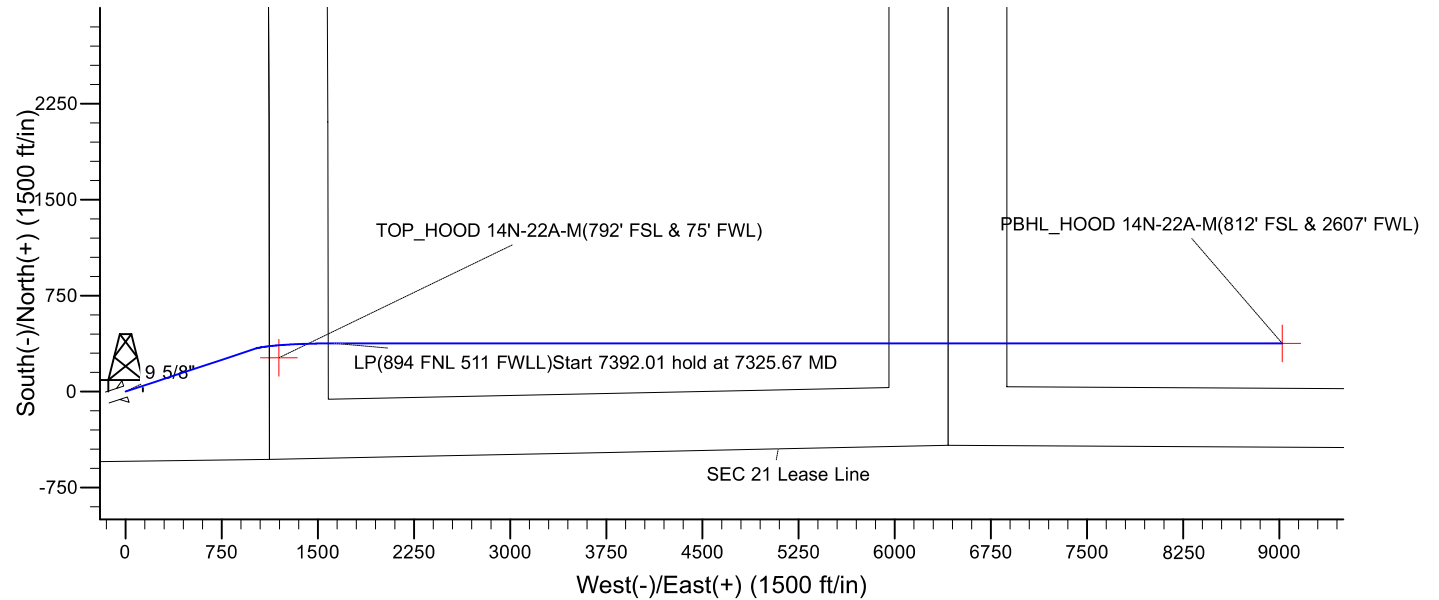
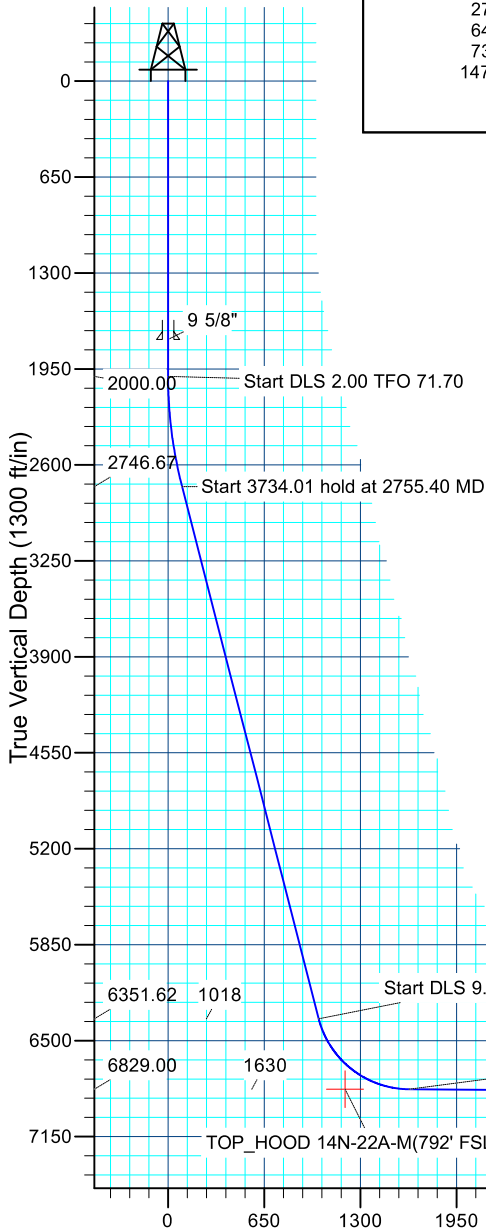
MD	Inc	Azi	TVD	+N/-S	+E/-W	Dleg	TFace	Vsect	Target
0.00	0.00	0.00	0.00	0.00	0.00	0.00	0.00	0.00	
2000.00	0.00	0.00	2000.00	0.00	0.00	0.00	0.00	0.00	
2755.40	15.11	71.70	2746.67	31.09	94.01	2.00	71.70	94.01	
6489.40	15.11	71.70	6351.62	336.72	1018.00	0.00	0.00	1018.00	
7325.67	89.59	90.00	6829.00	376.89	1630.27	9.00	18.95	1630.27	
14717.68	89.59	90.00	6882.00	376.89	9022.10	0.00	0.00	9022.10	PBHL

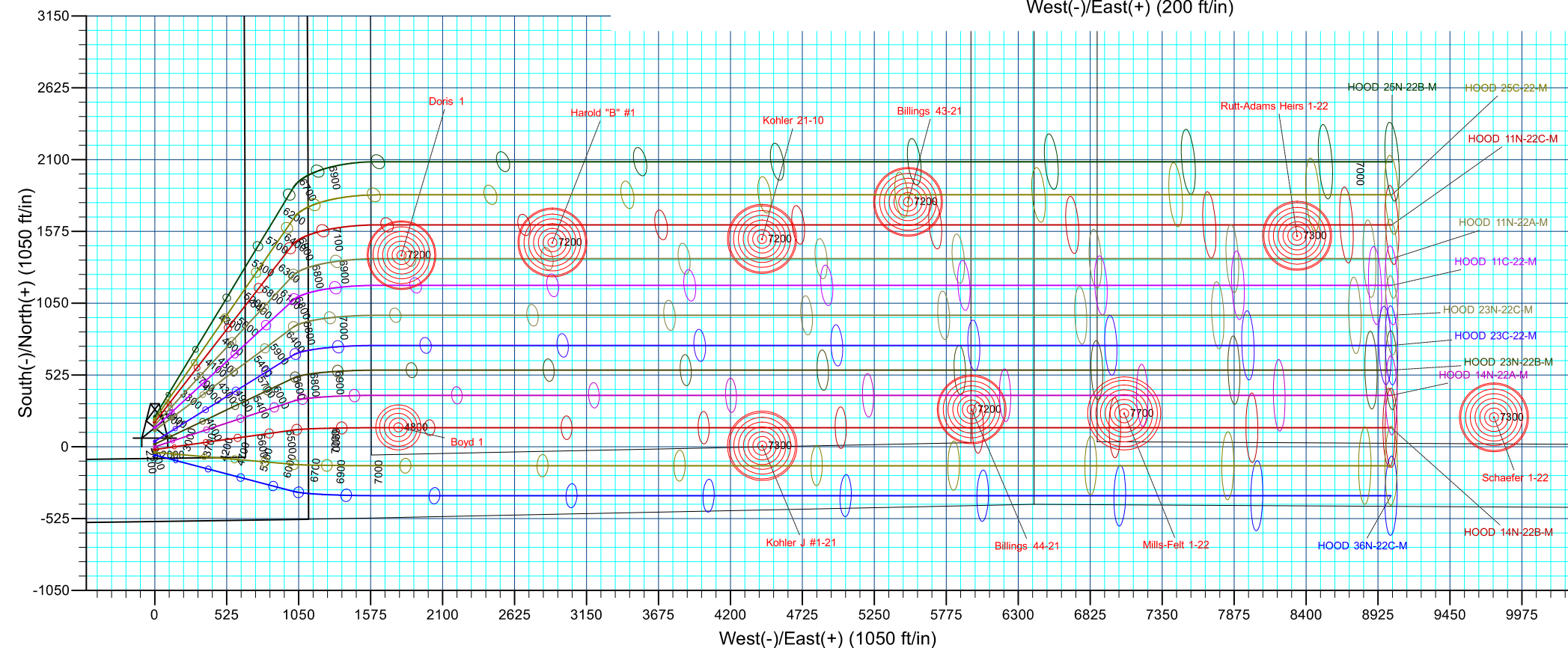
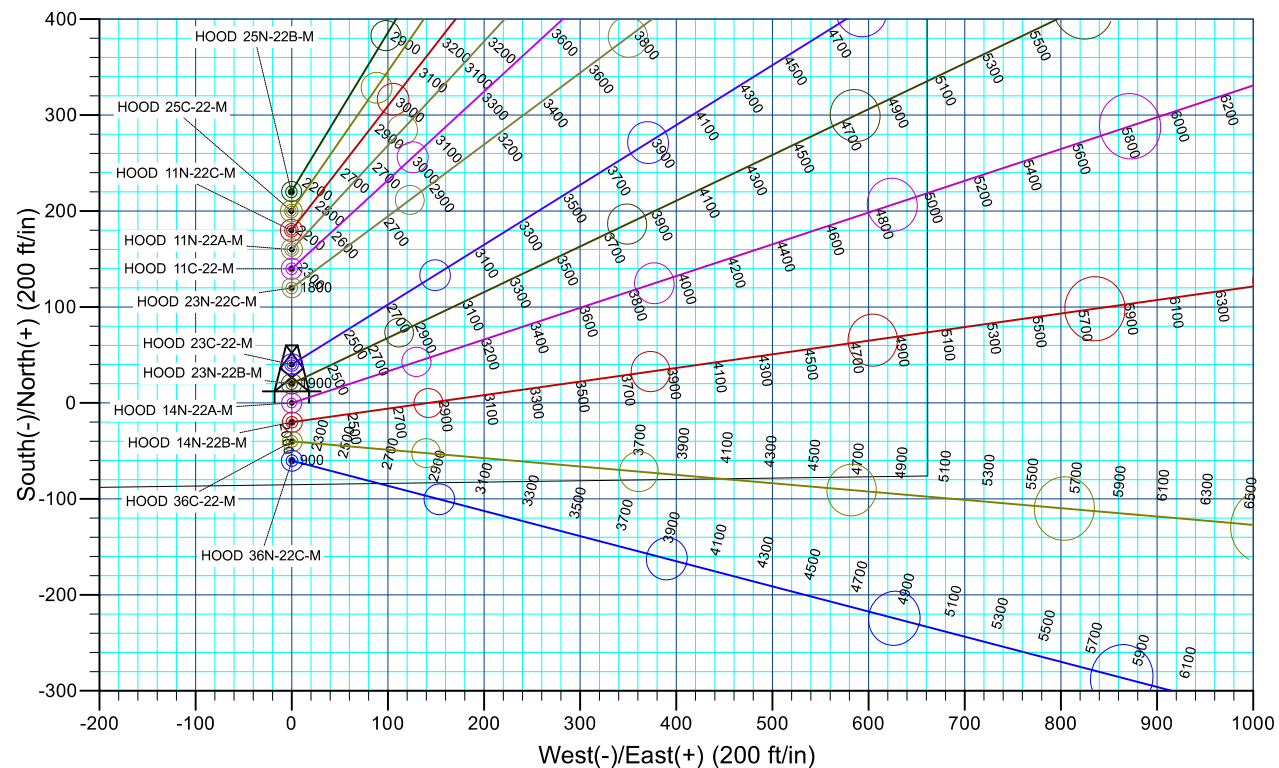
PROJECT DETAILS: SEC 20-T6N-R66W

Geodetic System: US State Plane 1983
 Datum: North American Datum 1983
 Ellipsoid: GRS 1980
 Zone: Colorado Northern Zone
 Colorado Northern Zone
 System Datum: Mean Sea Level

CASING DETAILS

TVD	MD	Name	Size
1750.00	1750.00	9 5/8"	9.625







Synergy Resources Corporation

SEC 20-T6N-R66W

HOOD-DOLES 37-20 PAD

HOOD 14N-22A-M

OH

Plan: PLAN #1

Standard Planning Report

16 December, 2016

Database:	EDM 5000.14 Single User Db	Local Co-ordinate Reference:	Well HOOD 14N-22A-M
Company:	Synergy Resources Corporation	TVD Reference:	GL 4734 & 25' KB @ 4759.00ft (ASSUMED)
Project:	SEC 20-T6N-R66W	MD Reference:	GL 4734 & 25' KB @ 4759.00ft (ASSUMED)
Site:	HOOD-DOLES 37-20 PAD	North Reference:	True
Well:	HOOD 14N-22A-M	Survey Calculation Method:	Minimum Curvature
Wellbore:	OH		
Design:	PLAN #1		

Project	SEC 20-T6N-R66W		
Map System:	US State Plane 1983	System Datum:	Mean Sea Level
Geo Datum:	North American Datum 1983		
Map Zone:	Colorado Northern Zone		

Site	HOOD-DOLES 37-20 PAD				
Site Position:		Northing:	1,414,281.96 ft	Latitude:	40.4684660
From:	Lat/Long	Easting:	3,195,759.92 ft	Longitude:	-104.7964230
Position Uncertainty:	4.92 ft	Slot Radius:	13.200 in	Grid Convergence:	0.45 °

Well	HOOD 14N-22A-M, 545' FSL & 1122' FEL					
Well Position	+N/-S	-220.05 ft	Northing:	1,414,061.92 ft	Latitude:	40.4678620
	+E/-W	0.28 ft	Easting:	3,195,761.94 ft	Longitude:	-104.7964220
Position Uncertainty		4.92 ft	Wellhead Elevation:		Ground Level:	4,734.00 ft

Wellbore	OH				
-----------------	----	--	--	--	--

Magnetics	Model Name	Sample Date	Declination (°)	Dip Angle (°)	Field Strength (nT)
	IGRF2015	12/15/2016	8.29	66.92	52,482

Design	PLAN #1			
---------------	---------	--	--	--

Audit Notes:				
Version:	Phase:	PLAN	Tie On Depth:	0.00
Vertical Section:	Depth From (TVD) (ft)	+N/-S (ft)	+E/-W (ft)	Direction (°)
	0.00	0.00	0.00	90.00

Plan Survey Tool Program	Date	12/16/2016		
Depth From (ft)	Depth To (ft)	Survey (Wellbore)	Tool Name	Remarks
1	0.00	14,717.55	PLAN #1 (OH)	MWD+IFR1 OWSG MWD + IFR1

Plan Sections										
Measured Depth (ft)	Inclination (°)	Azimuth (°)	Vertical Depth (ft)	+N/-S (ft)	+E/-W (ft)	Dogleg Rate (°/100ft)	Build Rate (°/100ft)	Turn Rate (°/100ft)	TFO (°)	Target
0.00	0.00	0.00	0.00	0.00	0.00	0.00	0.00	0.00	0.00	
2,000.00	0.00	0.00	2,000.00	0.00	0.00	0.00	0.00	0.00	0.00	
2,755.40	15.11	71.70	2,746.67	31.09	94.01	2.00	2.00	9.49	71.70	
6,489.40	15.11	71.70	6,351.62	336.72	1,018.00	0.00	0.00	0.00	0.00	
7,325.67	89.59	90.00	6,829.00	376.89	1,630.27	9.00	8.91	2.19	18.95	
14,717.68	89.59	90.00	6,882.00	376.89	9,022.10	0.00	0.00	0.00	0.00	PBHL_HOOD 14N-

Database:	EDM 5000.14 Single User Db	Local Co-ordinate Reference:	Well HOOD 14N-22A-M
Company:	Synergy Resources Corporation	TVD Reference:	GL 4734 & 25' KB @ 4759.00ft (ASSUMED)
Project:	SEC 20-T6N-R66W	MD Reference:	GL 4734 & 25' KB @ 4759.00ft (ASSUMED)
Site:	HOOD-DOLES 37-20 PAD	North Reference:	True
Well:	HOOD 14N-22A-M	Survey Calculation Method:	Minimum Curvature
Wellbore:	OH		
Design:	PLAN #1		

Planned Survey									
Measured Depth (ft)	Inclination (°)	Azimuth (°)	Vertical Depth (ft)	+N/-S (ft)	+E/-W (ft)	Vertical Section (ft)	Dogleg Rate (°/100ft)	Build Rate (°/100ft)	Turn Rate (°/100ft)
0.00	0.00	0.00	0.00	0.00	0.00	0.00	0.00	0.00	0.00
1,750.00	0.00	0.00	1,750.00	0.00	0.00	0.00	0.00	0.00	0.00
9 5/8"									
2,000.00	0.00	0.00	2,000.00	0.00	0.00	0.00	0.00	0.00	0.00
Start DLS 2.00 TFO 71.70									
2,100.00	2.00	71.70	2,099.98	0.55	1.66	1.66	2.00	2.00	0.00
2,200.00	4.00	71.70	2,199.84	2.19	6.63	6.63	2.00	2.00	0.00
2,300.00	6.00	71.70	2,299.45	4.93	14.90	14.90	2.00	2.00	0.00
2,400.00	8.00	71.70	2,398.70	8.76	26.47	26.47	2.00	2.00	0.00
2,500.00	10.00	71.70	2,497.47	13.67	41.32	41.32	2.00	2.00	0.00
2,600.00	12.00	71.70	2,595.62	19.66	59.44	59.44	2.00	2.00	0.00
2,700.00	14.00	71.70	2,693.06	26.72	80.79	80.79	2.00	2.00	0.00
2,755.40	15.11	71.70	2,746.67	31.09	94.01	94.01	2.00	2.00	0.00
Start 3734.01 hold at 2755.40 MD									
2,800.00	15.11	71.70	2,789.74	34.75	105.05	105.05	0.00	0.00	0.00
2,900.00	15.11	71.70	2,886.28	42.93	129.79	129.79	0.00	0.00	0.00
3,000.00	15.11	71.70	2,982.82	51.12	154.54	154.54	0.00	0.00	0.00
3,100.00	15.11	71.70	3,079.37	59.30	179.28	179.28	0.00	0.00	0.00
3,200.00	15.11	71.70	3,175.91	67.49	204.03	204.03	0.00	0.00	0.00
3,300.00	15.11	71.70	3,272.45	75.67	228.77	228.77	0.00	0.00	0.00
3,400.00	15.11	71.70	3,369.00	83.85	253.52	253.52	0.00	0.00	0.00
3,500.00	15.11	71.70	3,465.54	92.04	278.26	278.26	0.00	0.00	0.00
3,600.00	15.11	71.70	3,562.08	100.22	303.01	303.01	0.00	0.00	0.00
3,700.00	15.11	71.70	3,658.63	108.41	327.75	327.75	0.00	0.00	0.00
3,800.00	15.11	71.70	3,755.17	116.59	352.50	352.50	0.00	0.00	0.00
3,900.00	15.11	71.70	3,851.72	124.78	377.24	377.24	0.00	0.00	0.00
4,000.00	15.11	71.70	3,948.26	132.96	401.99	401.99	0.00	0.00	0.00
4,100.00	15.11	71.70	4,044.80	141.15	426.73	426.73	0.00	0.00	0.00
4,200.00	15.11	71.70	4,141.35	149.33	451.48	451.48	0.00	0.00	0.00
4,300.00	15.11	71.70	4,237.89	157.52	476.23	476.23	0.00	0.00	0.00
4,400.00	15.11	71.70	4,334.43	165.70	500.97	500.97	0.00	0.00	0.00
4,500.00	15.11	71.70	4,430.98	173.89	525.72	525.72	0.00	0.00	0.00
4,600.00	15.11	71.70	4,527.52	182.07	550.46	550.46	0.00	0.00	0.00
4,700.00	15.11	71.70	4,624.06	190.26	575.21	575.21	0.00	0.00	0.00
4,800.00	15.11	71.70	4,720.61	198.44	599.95	599.95	0.00	0.00	0.00
4,900.00	15.11	71.70	4,817.15	206.63	624.70	624.70	0.00	0.00	0.00
5,000.00	15.11	71.70	4,913.70	214.81	649.44	649.44	0.00	0.00	0.00
5,100.00	15.11	71.70	5,010.24	223.00	674.19	674.19	0.00	0.00	0.00
5,200.00	15.11	71.70	5,106.78	231.18	698.93	698.93	0.00	0.00	0.00
5,300.00	15.11	71.70	5,203.33	239.37	723.68	723.68	0.00	0.00	0.00
5,400.00	15.11	71.70	5,299.87	247.55	748.42	748.42	0.00	0.00	0.00
5,500.00	15.11	71.70	5,396.41	255.74	773.17	773.17	0.00	0.00	0.00
5,600.00	15.11	71.70	5,492.96	263.92	797.91	797.91	0.00	0.00	0.00
5,700.00	15.11	71.70	5,589.50	272.11	822.66	822.66	0.00	0.00	0.00
5,800.00	15.11	71.70	5,686.04	280.29	847.40	847.40	0.00	0.00	0.00
5,900.00	15.11	71.70	5,782.59	288.48	872.15	872.15	0.00	0.00	0.00
6,000.00	15.11	71.70	5,879.13	296.66	896.90	896.90	0.00	0.00	0.00
6,100.00	15.11	71.70	5,975.68	304.85	921.64	921.64	0.00	0.00	0.00
6,200.00	15.11	71.70	6,072.22	313.03	946.39	946.39	0.00	0.00	0.00
6,300.00	15.11	71.70	6,168.76	321.22	971.13	971.13	0.00	0.00	0.00
6,400.00	15.11	71.70	6,265.31	329.40	995.88	995.88	0.00	0.00	0.00
6,489.40	15.11	71.70	6,351.62	336.72	1,018.00	1,018.00	0.00	0.00	0.00
Start DLS 9.00 TFO 18.95									

Database:	EDM 5000.14 Single User Db	Local Co-ordinate Reference:	Well HOOD 14N-22A-M
Company:	Synergy Resources Corporation	TVD Reference:	GL 4734 & 25' KB @ 4759.00ft (ASSUMED)
Project:	SEC 20-T6N-R66W	MD Reference:	GL 4734 & 25' KB @ 4759.00ft (ASSUMED)
Site:	HOOD-DOLES 37-20 PAD	North Reference:	True
Well:	HOOD 14N-22A-M	Survey Calculation Method:	Minimum Curvature
Wellbore:	OH		
Design:	PLAN #1		

Planned Survey									
Measured Depth (ft)	Inclination (°)	Azimuth (°)	Vertical Depth (ft)	+N/-S (ft)	+E/-W (ft)	Vertical Section (ft)	Dogleg Rate (°/100ft)	Build Rate (°/100ft)	Turn Rate (°/100ft)
6,500.00	16.01	72.82	6,361.83	337.59	1,020.71	1,020.71	9.00	8.54	10.59
6,600.00	24.73	79.41	6,455.50	345.52	1,054.51	1,054.51	9.00	8.72	6.59
6,700.00	33.59	82.69	6,542.74	352.90	1,102.61	1,102.61	9.00	8.86	3.28
6,800.00	42.50	84.72	6,621.42	359.55	1,163.81	1,163.81	9.00	8.91	2.03
6,900.00	51.44	86.15	6,689.58	365.29	1,236.61	1,236.61	9.00	8.94	1.44
7,000.00	60.39	87.27	6,745.56	370.00	1,319.21	1,319.21	9.00	8.95	1.12
7,100.00	69.36	88.20	6,787.98	373.54	1,409.59	1,409.59	9.00	8.96	0.93
7,200.00	78.32	89.03	6,815.79	375.85	1,505.51	1,505.51	9.00	8.96	0.83
7,300.00	87.29	89.80	6,828.30	376.85	1,604.62	1,604.62	9.00	8.97	0.78
7,325.67	89.59	90.00	6,829.00	376.89	1,630.27	1,630.27	9.00	8.97	0.76
LP(894 FNL 511 FWLL)Start 7392.01 hold at 7325.67 MD									
7,400.00	89.59	90.00	6,829.54	376.89	1,704.60	1,704.60	0.00	0.00	0.00
7,500.00	89.59	90.00	6,830.25	376.89	1,804.60	1,804.60	0.00	0.00	0.00
7,600.00	89.59	90.00	6,830.97	376.89	1,904.60	1,904.60	0.00	0.00	0.00
7,700.00	89.59	90.00	6,831.69	376.89	2,004.59	2,004.59	0.00	0.00	0.00
7,800.00	89.59	90.00	6,832.40	376.89	2,104.59	2,104.59	0.00	0.00	0.00
7,900.00	89.59	90.00	6,833.12	376.89	2,204.59	2,204.59	0.00	0.00	0.00
8,000.00	89.59	90.00	6,833.84	376.89	2,304.59	2,304.59	0.00	0.00	0.00
8,100.00	89.59	90.00	6,834.55	376.89	2,404.58	2,404.58	0.00	0.00	0.00
8,200.00	89.59	90.00	6,835.27	376.89	2,504.58	2,504.58	0.00	0.00	0.00
8,300.00	89.59	90.00	6,835.99	376.89	2,604.58	2,604.58	0.00	0.00	0.00
8,400.00	89.59	90.00	6,836.71	376.89	2,704.58	2,704.58	0.00	0.00	0.00
8,500.00	89.59	90.00	6,837.42	376.89	2,804.57	2,804.57	0.00	0.00	0.00
8,600.00	89.59	90.00	6,838.14	376.89	2,904.57	2,904.57	0.00	0.00	0.00
8,700.00	89.59	90.00	6,838.86	376.89	3,004.57	3,004.57	0.00	0.00	0.00
8,800.00	89.59	90.00	6,839.57	376.89	3,104.57	3,104.57	0.00	0.00	0.00
8,900.00	89.59	90.00	6,840.29	376.89	3,204.56	3,204.56	0.00	0.00	0.00
9,000.00	89.59	90.00	6,841.01	376.89	3,304.56	3,304.56	0.00	0.00	0.00
9,100.00	89.59	90.00	6,841.72	376.89	3,404.56	3,404.56	0.00	0.00	0.00
9,200.00	89.59	90.00	6,842.44	376.89	3,504.56	3,504.56	0.00	0.00	0.00
9,300.00	89.59	90.00	6,843.16	376.89	3,604.55	3,604.55	0.00	0.00	0.00
9,400.00	89.59	90.00	6,843.87	376.89	3,704.55	3,704.55	0.00	0.00	0.00
9,500.00	89.59	90.00	6,844.59	376.89	3,804.55	3,804.55	0.00	0.00	0.00
9,600.00	89.59	90.00	6,845.31	376.89	3,904.55	3,904.55	0.00	0.00	0.00
9,700.00	89.59	90.00	6,846.03	376.89	4,004.54	4,004.54	0.00	0.00	0.00
9,800.00	89.59	90.00	6,846.74	376.89	4,104.54	4,104.54	0.00	0.00	0.00
9,900.00	89.59	90.00	6,847.46	376.89	4,204.54	4,204.54	0.00	0.00	0.00
10,000.00	89.59	90.00	6,848.18	376.89	4,304.54	4,304.54	0.00	0.00	0.00
10,100.00	89.59	90.00	6,848.89	376.89	4,404.53	4,404.53	0.00	0.00	0.00
10,200.00	89.59	90.00	6,849.61	376.89	4,504.53	4,504.53	0.00	0.00	0.00
10,300.00	89.59	90.00	6,850.33	376.89	4,604.53	4,604.53	0.00	0.00	0.00
10,400.00	89.59	90.00	6,851.04	376.89	4,704.53	4,704.53	0.00	0.00	0.00
10,500.00	89.59	90.00	6,851.76	376.89	4,804.52	4,804.52	0.00	0.00	0.00
10,600.00	89.59	90.00	6,852.48	376.89	4,904.52	4,904.52	0.00	0.00	0.00
10,700.00	89.59	90.00	6,853.20	376.89	5,004.52	5,004.52	0.00	0.00	0.00
10,800.00	89.59	90.00	6,853.91	376.89	5,104.52	5,104.52	0.00	0.00	0.00
10,900.00	89.59	90.00	6,854.63	376.89	5,204.51	5,204.51	0.00	0.00	0.00
11,000.00	89.59	90.00	6,855.35	376.89	5,304.51	5,304.51	0.00	0.00	0.00
11,100.00	89.59	90.00	6,856.06	376.89	5,404.51	5,404.51	0.00	0.00	0.00
11,200.00	89.59	90.00	6,856.78	376.89	5,504.50	5,504.50	0.00	0.00	0.00
11,300.00	89.59	90.00	6,857.50	376.89	5,604.50	5,604.50	0.00	0.00	0.00
11,400.00	89.59	90.00	6,858.21	376.89	5,704.50	5,704.50	0.00	0.00	0.00
11,500.00	89.59	90.00	6,858.93	376.89	5,804.50	5,804.50	0.00	0.00	0.00

Database:	EDM 5000.14 Single User Db	Local Co-ordinate Reference:	Well HOOD 14N-22A-M
Company:	Synergy Resources Corporation	TVD Reference:	GL 4734 & 25' KB @ 4759.00ft (ASSUMED)
Project:	SEC 20-T6N-R66W	MD Reference:	GL 4734 & 25' KB @ 4759.00ft (ASSUMED)
Site:	HOOD-DOLES 37-20 PAD	North Reference:	True
Well:	HOOD 14N-22A-M	Survey Calculation Method:	Minimum Curvature
Wellbore:	OH		
Design:	PLAN #1		

Planned Survey									
Measured Depth (ft)	Inclination (°)	Azimuth (°)	Vertical Depth (ft)	+N/-S (ft)	+E/-W (ft)	Vertical Section (ft)	Dogleg Rate (°/100ft)	Build Rate (°/100ft)	Turn Rate (°/100ft)
11,600.00	89.59	90.00	6,859.65	376.89	5,904.49	5,904.49	0.00	0.00	0.00
11,700.00	89.59	90.00	6,860.36	376.89	6,004.49	6,004.49	0.00	0.00	0.00
11,800.00	89.59	90.00	6,861.08	376.89	6,104.49	6,104.49	0.00	0.00	0.00
11,900.00	89.59	90.00	6,861.80	376.89	6,204.49	6,204.49	0.00	0.00	0.00
12,000.00	89.59	90.00	6,862.52	376.89	6,304.48	6,304.48	0.00	0.00	0.00
12,100.00	89.59	90.00	6,863.23	376.89	6,404.48	6,404.48	0.00	0.00	0.00
12,200.00	89.59	90.00	6,863.95	376.89	6,504.48	6,504.48	0.00	0.00	0.00
12,300.00	89.59	90.00	6,864.67	376.89	6,604.48	6,604.48	0.00	0.00	0.00
12,400.00	89.59	90.00	6,865.38	376.89	6,704.47	6,704.47	0.00	0.00	0.00
12,500.00	89.59	90.00	6,866.10	376.89	6,804.47	6,804.47	0.00	0.00	0.00
12,600.00	89.59	90.00	6,866.82	376.89	6,904.47	6,904.47	0.00	0.00	0.00
12,700.00	89.59	90.00	6,867.53	376.89	7,004.47	7,004.47	0.00	0.00	0.00
12,800.00	89.59	90.00	6,868.25	376.89	7,104.46	7,104.46	0.00	0.00	0.00
12,900.00	89.59	90.00	6,868.97	376.89	7,204.46	7,204.46	0.00	0.00	0.00
13,000.00	89.59	90.00	6,869.69	376.89	7,304.46	7,304.46	0.00	0.00	0.00
13,100.00	89.59	90.00	6,870.40	376.89	7,404.46	7,404.46	0.00	0.00	0.00
13,200.00	89.59	90.00	6,871.12	376.89	7,504.45	7,504.45	0.00	0.00	0.00
13,300.00	89.59	90.00	6,871.84	376.89	7,604.45	7,604.45	0.00	0.00	0.00
13,400.00	89.59	90.00	6,872.55	376.89	7,704.45	7,704.45	0.00	0.00	0.00
13,500.00	89.59	90.00	6,873.27	376.89	7,804.45	7,804.45	0.00	0.00	0.00
13,600.00	89.59	90.00	6,873.99	376.89	7,904.44	7,904.44	0.00	0.00	0.00
13,700.00	89.59	90.00	6,874.70	376.89	8,004.44	8,004.44	0.00	0.00	0.00
13,800.00	89.59	90.00	6,875.42	376.89	8,104.44	8,104.44	0.00	0.00	0.00
13,900.00	89.59	90.00	6,876.14	376.89	8,204.44	8,204.44	0.00	0.00	0.00
14,000.00	89.59	90.00	6,876.85	376.89	8,304.43	8,304.43	0.00	0.00	0.00
14,100.00	89.59	90.00	6,877.57	376.89	8,404.43	8,404.43	0.00	0.00	0.00
14,200.00	89.59	90.00	6,878.29	376.89	8,504.43	8,504.43	0.00	0.00	0.00
14,300.00	89.59	90.00	6,879.01	376.89	8,604.43	8,604.43	0.00	0.00	0.00
14,400.00	89.59	90.00	6,879.72	376.89	8,704.42	8,704.42	0.00	0.00	0.00
14,500.00	89.59	90.00	6,880.44	376.89	8,804.42	8,804.42	0.00	0.00	0.00
14,600.00	89.59	90.00	6,881.16	376.89	8,904.42	8,904.42	0.00	0.00	0.00
14,700.00	89.59	90.00	6,881.87	376.89	9,004.42	9,004.42	0.00	0.00	0.00
14,717.68	89.59	90.00	6,882.00	376.89	9,022.10	9,022.10	0.00	0.00	0.00
TD at 14717.68									

Design Targets									
Target Name	Dip Angle (°)	Dip Dir. (°)	TVD (ft)	+N/-S (ft)	+E/-W (ft)	Northing (ft)	Easting (ft)	Latitude	Longitude
TOP_HOOD 14N-22A	0.00	0.00	6,829.00	263.80	1,196.39	1,414,335.20	3,196,956.20	40.4685860	-104.7921220
- hit/miss target									
- plan misses target center by 171.06ft at 6940.13ft MD (6713.60 TVD, 367.31 N, 1268.69 E)									
- Point									
PBHL_HOOD 14N-22	0.00	0.00	6,882.00	376.89	9,022.10	1,414,510.38	3,204,780.77	40.4688920	-104.7639950
- hit/miss target									
- plan hits target center									
- Point									

Database:	EDM 5000.14 Single User Db	Local Co-ordinate Reference:	Well HOOD 14N-22A-M
Company:	Synergy Resources Corporation	TVD Reference:	GL 4734 & 25' KB @ 4759.00ft (ASSUMED)
Project:	SEC 20-T6N-R66W	MD Reference:	GL 4734 & 25' KB @ 4759.00ft (ASSUMED)
Site:	HOOD-DOLES 37-20 PAD	North Reference:	True
Well:	HOOD 14N-22A-M	Survey Calculation Method:	Minimum Curvature
Wellbore:	OH		
Design:	PLAN #1		

Casing Points					
Measured Depth (ft)	Vertical Depth (ft)	Name		Casing Diameter (in)	Hole Diameter (in)
1,750.00	1,750.00	9 5/8"		9.625	13.500

Plan Annotations					
Measured Depth (ft)	Vertical Depth (ft)	Local Coordinates		Comment	
		+N/-S (ft)	+E/-W (ft)		
2,000.00	2,000.00	0.00	0.00	Start DLS 2.00 TFO 71.70	
2,755.40	2,746.67	31.09	94.01	Start 3734.01 hold at 2755.40 MD	
6,489.40	6,351.62	336.72	1,018.00	Start DLS 9.00 TFO 18.95	
7,325.67	6,829.00	376.89	1,630.27	LP(894 FNL 511 FWLL)Start 7392.01 hold at 7325.67 MD	
14,717.68	6,882.00	376.89	9,022.10	TD at 14717.68	