

T6N, R66W

NW. COR.
SEC. 20, T6N, R66W
FOUND 2 1/2" ALUM. CAP
L.S. NO. 30462

S 88°03'08" W
1324.42' (M)

S 88°02'38" W
1324.25' (M)

S 88°42'56" W 2640.71' (M)

NE. COR.
SEC. 20, T6N, R66W
SET 2 1/2" ALUM. CAP
L.S. NO. 38230

MATCH LINE
SEE SHEET 2

W. 1/16 COR.
SEC. 20 & SEC. 17, T6N, R66W
SET 2 1/2" ALUM. CAP
L.S. NO. 38230

N. 1/4 COR.
SEC. 20, T6N, R66W
FOUND 3 1/4" ALUM. CAP
WITNESS COR 39' SOUTH
OF CORNER POSITION
L.S. NO. 22098

SURFACE LOCATION
GROUND ELEVATION= 4735.1'
LATITUDE= 40.467862°
LONGITUDE= -104.796422°
1/4 1/4: SE1/4 SE1/4

TOP OF PRODUCTION
LATITUDE= 40.468586°
LONGITUDE= -104.792122°
1/4 1/4: SW1/4 SW1/4

BOTTOM HOLE LOCATION
LATITUDE= 40.468892°
LONGITUDE= -104.763995°
1/4 1/4: SE1/4 SW1/4

W. 1/4 COR.
SEC. 20, T6N, R66W
FOUND 3 1/4" ALUM. CAP
WITNESS COR 200' SOUTH
OF CORNER POSITION
L.S. NO. 33642

S 88°26'19" W
2659.00' (C)

S 88°26'19" W
2653.82' (C)

E. 1/4 COR.
SEC. 20, T6N, R66W
FOUND 3 1/4" ALUM. CAP
L.S. NO. 22098

N 00°13'43" W 2642.16' (M)

N 00°13'34" W 2644.08' (M)

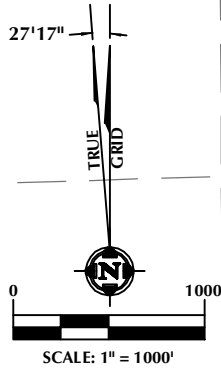
N 00°27'41" W
2659.98' (C)

N 00°27'41" W
2620.59' (C)

N 00°44'26" W 2646.99' (M)

N 00°32'07" W 2635.06' (M)

WELL BORE CONTINUES
INTO SECTION 21



HOOD 14N-22A-M
SURFACE LOCATION

460' BUFFER

1122'

545'

SW. COR.
SEC. 20, T6N, R66W
FOUND 3 1/4" ALUM. CAP
L.S. NO. 16154

S 87°56'37" W
1335.19' (M)

S 87°56'07" W
1335.22' (M)

S 88°45'03" W
1328.44' (M)

S 88°45'11" W
1328.53' (M)

SE. COR.
SEC. 20, T6N, R66W
FOUND 2 1/2" ALUM. CAP
L.S. NO. 28285

W. 1/16 COR.
SEC. 20 & SEC. 29, T6N, R66W
FOUND 2 1/2" ALUM. CAP
L.S. NO. 9644

S. 1/4 COR.
SEC. 20, T6N, R66W
FOUND 2 1/2" ALUM. CAP
L.S. NO. 23501

E. 1/16 COR.
SEC. 20 & SEC. 29, T6N, R66W
FOUND 3 1/4" ALUM. CAP
L.S. NO. 4392

CERTIFICATE OF SURVEYOR:

THIS IS TO CERTIFY THAT THE ABOVE PLAT WAS PREPARED FROM FIELD NOTES OF ACTUAL SURVEY MADE BY ME OR UNDER MY SUPERVISION AND THAT THE SAME ARE TRUE AND CORRECT TO THE BEST OF MY KNOWLEDGE AND BELIEF. THIS CERTIFICATE DOES NOT REPRESENT A LAND SURVEY PLAT OR IMPROVEMENT SURVEY PLAT AS DEFINED BY C.R.S. 38-51-102 AND CANNOT BE RELIED UPON TO DETERMINE OWNERSHIP.

John R. Slaugh
JOHN R. SLAUGH
PROFESSIONAL LAND SURVEYOR
COLORADO REGISTRATION NUMBER 38230
10/24/16

NOTICE:
ACCORDING TO COLORADO STATE LAW YOU MUST COMMENCE ANY LEGAL ACTION BASED UPON ANY DEFECT IN THIS SURVEY WITHIN THREE YEARS AFTER YOU FIRST DISCOVER SUCH DEFECT. IN NO EVENT MAY ANY ACTION BASED UPON ANY DEFECT IN THIS SURVEY BE COMMENCED MORE THAN TEN YEARS FROM THE DATE ON THE CERTIFICATION SHOWN HEREON.

WELL DISTANCES:

BUILDING: ±1034' NE
BUILDING UNIT: ±1034' NE
HIGH OCCUPANCY BUILDING UNIT: 5280'+
DESIGNATED OUTSIDE ACTIVITY AREA: 5280'+
PUBLIC ROAD: ±535' S
PROPERTY LINE: ±207' W
ABOVE GROUND UTILITY: ±558' S
RAILROAD: ±4462' S

NOTES:

- ▲ INDICATES SECTION CORNER
- INDICATES CALCULATED CORNER
- DRAWING LATITUDE AND LONGITUDE COORDINATES ARE NAD 83 (2011)(EPOCH:2010)
- ELEVATION BASED ON NAVD88 (GEOID12B)
- BASIS OF BEARING DERIVED FROM COLORADO COORDINATE SYSTEM OF 1983 NORTH ZONE.
- ALL MEASURED DISTANCES ARE GRID.
COMBINED SCALE FACTOR: .99974122 CALCULATED FROM THE SE. CORNER OF SECTION 20, T6N, R66W
- OPERATOR: ROB WILSON / PDOP = 1.4
- SEE ADDENDUM TO WELL LOCATION CERTIFICATE FOR EXISTING IMPROVEMENTS WITHIN 500' OF THE WELL PAD.
- WELL FOOTAGES ARE MEASURED AT RIGHT ANGLES TO THE SECTION LINES.
- THE BOTTOM OF HOLE BEARS N88°42'58"E, 7827' FROM THE TOP OF PRODUCTION ZONE.

WELL PAD - HOOD-DOLES 37-20

HOOD 14N-22A-M
WELL LOCATION CERTIFICATE
545' FSL & 1122' FEL SESE (SURFACE)
LOCATED IN SECTION 20
792' FSL & 75' FWL SWSW (TOP OF PRODUCTION)
LOCATED IN SECTION 21
812' FSL & 2607' FWL SESW (BOTTOM)
LOCATED IN SECTION 22
T6N, R66W, 6TH P.M.
WELD COUNTY, COLORADO



1625 Broadway, Suite 300
Denver, Colorado 80202



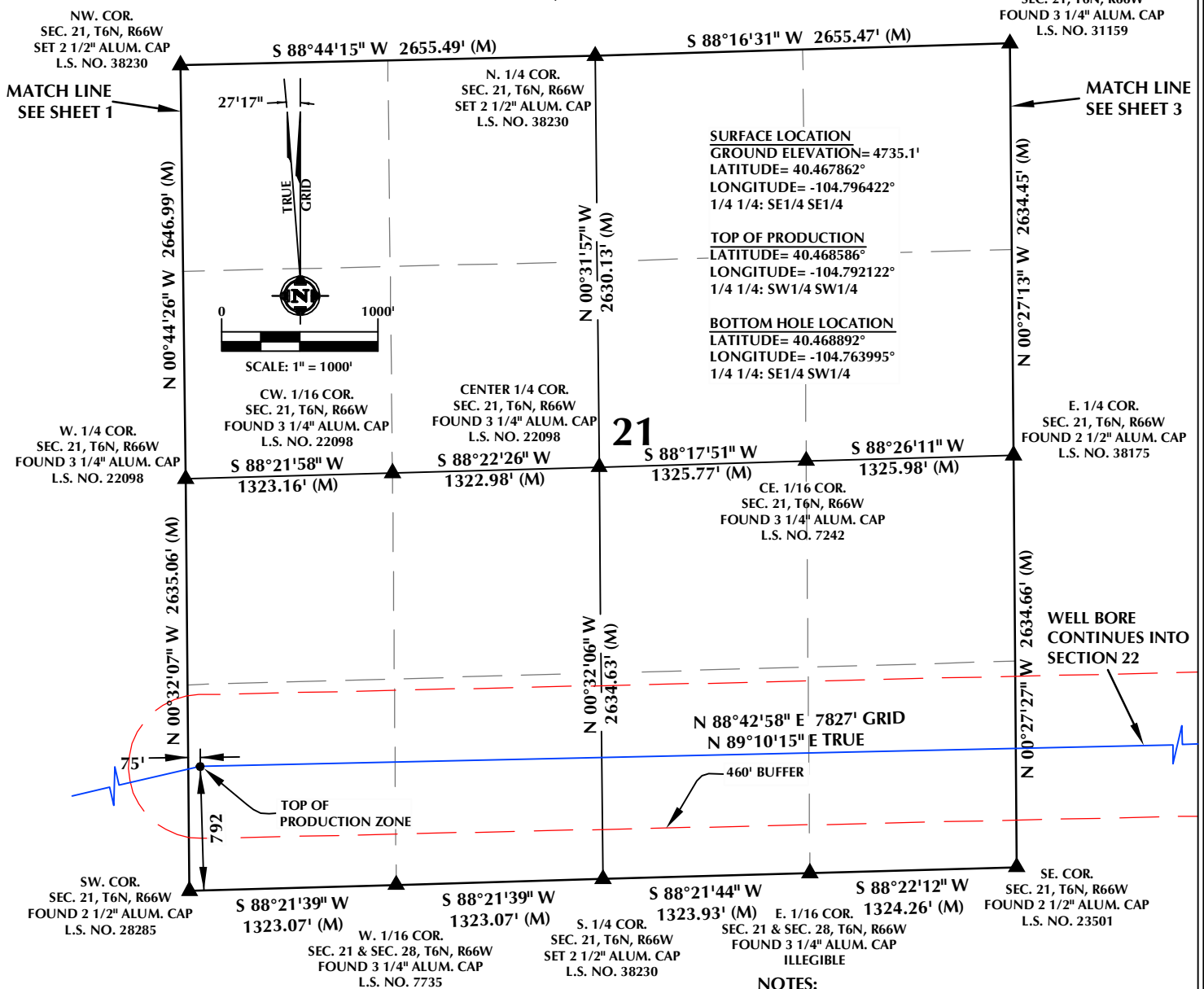
CONSULTING, LLC

SHERIDAN OFFICE
1095 Saberton Avenue
Sheridan, Wyoming 82801
Phone 307-674-0609

LOVELAND OFFICE
1635 Foxtrail Drive, Suite 204
Loveland, Colorado 80538
Phone 970-776-4331

DRAFTED BY:	LMO	CHECKED BY:	JRS	SHEET NO:
DATE DRAFTED:	9/12/16	DATE SURVEYED:	7/7/16	1
REVISED:	10/24/16	FILE NAME:	16-80	1 OF 3

T6N, R66W



CERTIFICATE OF SURVEYOR:

THIS IS TO CERTIFY THAT THE ABOVE PLAT WAS PREPARED FROM FIELD NOTES OF ACTUAL SURVEY MADE BY ME OR UNDER MY SUPERVISION AND THAT THE SAME ARE TRUE AND CORRECT TO THE BEST OF MY KNOWLEDGE AND BELIEF. THIS CERTIFICATE DOES NOT REPRESENT A LAND SURVEY PLAT OR IMPROVEMENT SURVEY PLAT AS DEFINED BY C.S. 38-51-102 AND CANNOT BE RELIED UPON TO DETERMINE OWNERSHIP.

John R. Slaugh
JOHN R. SLAUGH
PROFESSIONAL LAND SURVEYOR
COLORADO REGISTRATION NUMBER 18230
10/24/16

NOTICE:
ACCORDING TO COLORADO STATE LAW YOU MUST COMMENCE ANY LEGAL ACTION BASED UPON ANY DEFECT IN THIS SURVEY WITHIN THREE YEARS AFTER YOU FIRST DISCOVER SUCH DEFECT. IN NO EVENT MAY ANY ACTION BASED UPON ANY DEFECT IN THIS SURVEY BE COMMENCED MORE THAN TEN YEARS FROM THE DATE ON THE CERTIFICATION SHOWN HEREON.

WELL DISTANCES:

BUILDING: ±1034' NE
BUILDING UNIT: ±1034' NE
HIGH OCCUPANCY BUILDING UNIT: 5280'+
DESIGNATED OUTSIDE ACTIVITY AREA: 5280'+
PUBLIC ROAD: ±535' S
PROPERTY LINE: ±207' W
ABOVE GROUND UTILITY: ±558' S
RAILROAD: ±4462' S

NOTES:

- ▲ INDICATES SECTION CORNER
- INDICATES CALCULATED CORNER
- DRAWING LATITUDE AND LONGITUDE COORDINATES ARE NAD 83 (2011)(EPOCH:2010)
- ELEVATION BASED ON NAVD88 (GEOID12B)
- BASIS OF BEARING DERIVED FROM COLORADO COORDINATE SYSTEM OF 1983 NORTH ZONE.
- ALL MEASURED DISTANCES ARE GRID.
COMBINED SCALE FACTOR: .99974122 CALCULATED FROM THE SE. CORNER OF SECTION 20, T6N, R66W
- OPERATOR: ROB WILSON / PDOP = 1.4
- SEE ADDENDUM TO WELL LOCATION CERTIFICATE FOR EXISTING IMPROVEMENTS WITHIN 500' OF THE WELL PAD.
- WELL FOOTAGES ARE MEASURED AT RIGHT ANGLES TO THE SECTION LINES.
- THE BOTTOM OF HOLE BEARS N88°42'58"E, 7827' FROM THE TOP OF PRODUCTION ZONE.

WELL PAD - HOOD-DOLES 37-20

HOOD 14N-22A-M
WELL LOCATION CERTIFICATE
545' FSL & 1122' FEL SESE (SURFACE)
LOCATED IN SECTION 20
792' FSL & 75' FWL SWSW (TOP OF PRODUCTION)
LOCATED IN SECTION 21
812' FSL & 2607' FWL SESW (BOTTOM)
LOCATED IN SECTION 22
T6N, R66W, 6TH P.M.
WELD COUNTY, COLORADO



1625 Broadway, Suite 300
Denver, Colorado 80202



CONSULTING, LLC

SHERIDAN OFFICE
1095 Saberton Avenue
Sheridan, Wyoming 82801
Phone 307-674-0609

LOVELAND OFFICE
1635 Foxtrail Drive, Suite 204
Loveland, Colorado 80538
Phone 970-776-4331

DRAFTED BY:	LMO	CHECKED BY:	JRS	SHEET NO:
DATE DRAFTED:	9/12/16	DATE SURVEYED:	7/7/16	2
REVISED:	10/24/16	FILE NAME:	16-80	2 OF 3

K:\SYNERGY RESOURCES\2016_80 HOOD DOLES T6N_R66W SEC 20\PLATS\HOOD PLAT.dwg, 10/25/2016 10:01:16 AM, ksa



JOHN R. SLAUGH
PROFESSIONAL LAND SURVEYOR
COLORADO REGISTRATION NUMBER 18230

WELL DISTANCES:

NOTES:

- ## WELL PAD - HOOD-DOLES 37-20



SYNERGY
RESOURCES CORPORATION

CONSULTING, LLC

LOVELAND OFFICE
1635 Foxtrail Drive, Suite 204
Loveland, Colorado 80538
Phone 970-776-4331

DRAFTED BY: LMO	CHECKED BY: JRS	SHEET NO: 3 3 OF 3
DATE DRAFTED: 9/12/16	DATE SURVEYED: 7/7/16	
REVISED: 10/24/16	FILE NAME: 16-80	