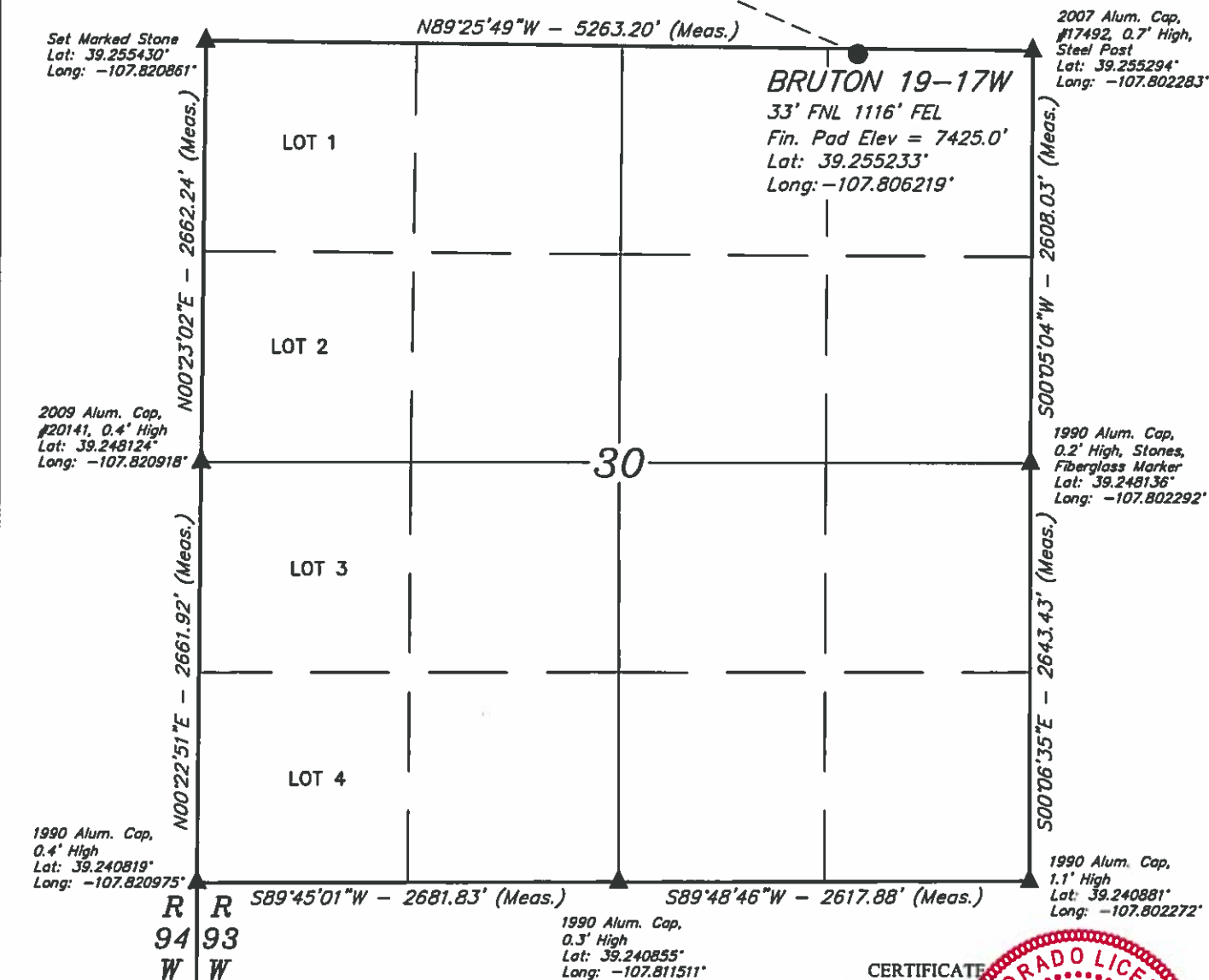


LEGEND:

- = PROPOSED WELLHEAD.
- = TOP OF GAS & TARGET BOTTOM HOLE.
- ▲ = SECTION CORNERS LOCATED.

Top of Gas
& Target
Bottom
Hole

T9S, R93W, 6th P.M.



NOTE DISTANCE TO NEAREST:

BUILDING: N30°W 4042'
BUILDING UNIT: N31°W 4173'
HOBUE: OVER A MILE
DOAA: OVER A MILE
PUBLIC ROAD: N09°E 4976'
ABOVE GROUND UTILITY: N08°E 2030'
RAILROAD: OVER A MILE
PROPERTY LINE: N89°E 1116'

NOTE:

- 1.) All latitudes and longitudes are given in NAD 83 coordinates.
- 2.) Distances to nearest section lines are measured perpendicularly.

CERTIFICATE
THIS IS TO CERTIFY THAT THE ABOVE PLAT WAS PREPARED FROM THE NOTES OF ACTUAL SURVEYS MADE BY ME UNDER MY SUPERVISION AND THAT THE LOCATION HAS BEEN STAKED ON THE GROUND AS SHOWN ON THE PLAT AND THAT THE SAME ARE TRUE AND CORRECT TO THE BEST OF MY KNOWLEDGE AND BELIEF.

REGISTERED LAND SURVEYOR
REGISTRATION NO. 10110
STATE OF COLORADO 12-20-16

PDOP = 1.4



REV: 02 12-22-16 S.S. (NAME & BHL CHANGE)

BASIS OF BEARINGS
BASIS OF BEARINGS IS A G.P.S. OBSERVATION

BASIS OF ELEVATION

BENCH MARK (19 RDS) LOCATED IN THE SE 1/4 OF SECTION 16, T9S, R93W, 6th P.M., TAKEN FROM THE SOUTH MAMM PEAK, QUADRANGLE, COLORADO, 7.5 MINUTE QUAD. (TOPOGRAPHIC MAP) PUBLISHED BY THE UNITED STATES DEPARTMENT OF THE INTERIOR, GEOLOGICAL SURVEY. SAID ELEVATION IS MARKED AS BEING 7252 FEET.

N

LARAMIE ENERGY, LLC

BRUTON 19-17W (SURFACE LOCATION)
NE 1/4 NE 1/4, SECTION 30, T9S, R93W, 6th P.M.
MESA COUNTY, COLORADO

SURVEYED BY: BRADEN BOX, B.B. DATE: 03-27-15
DRAWN BY: M.D. DATE DRAWN: 05-05-15
SCALE: 1" = 1000'



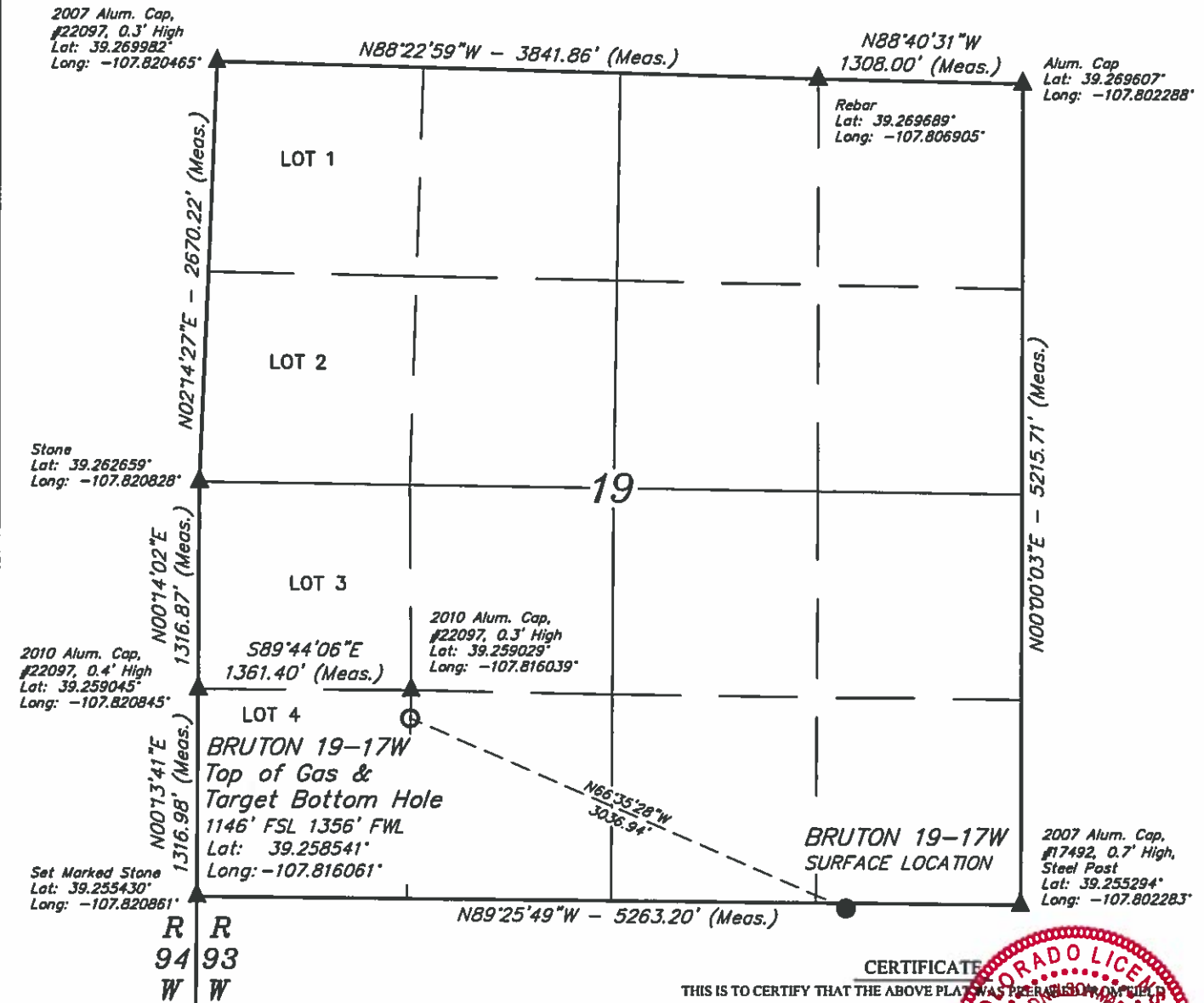
UELS, LLC
Corporate Office * 85 South 200 East
Vernal, UT 84078 * (435) 789-1017

WELL LOCATION PLAT

LEGEND:

- = PROPOSED WELLHEAD.
- = TOP OF GAS & TARGET BOTTOM HOLE.
- ▲ = SECTION CORNERS LOCATED.

T9S, R93W, 6th P.M.

**NOTE:**

- 1.) All latitudes and longitudes are given in NAD 83 coordinates.
- 2.) Distances to nearest section lines are measured perpendicularly.



CERTIFICATE

THIS IS TO CERTIFY THAT THE ABOVE PLAT WAS PREPARED FROM FIELD NOTES OF ACTUAL SURVEYS MADE BY ME OR UNDER MY SUPERVISION AND THAT THE LOCATION HAS BEEN STAKED ON THE GROUND AS SHOWN ON THE PLAT AND THAT THE SAME ARE TRUE AND CORRECT TO THE BEST OF MY KNOWLEDGE AND BELIEF.

REGISTERED LAND SURVEYOR
REGISTRATION NO. 10110
STATE OF COLORADO 12-28-16

REV: 02 12-22-16 S.S. (NAME & BHL CHANGE)

BASIS OF BEARINGS
BASIS OF BEARINGS IS A G.P.S. OBSERVATION

BASIS OF ELEVATION

BENCH MARK (19 RDS) LOCATED IN THE SE 1/4 OF SECTION 16, T9S, R93W, 6th P.M., TAKEN FROM THE SOUTH MAMM PEAK, QUADRANGLE, COLORADO, 7.5 MINUTE QUAD. (TOPOGRAPHIC MAP) PUBLISHED BY THE UNITED STATES DEPARTMENT OF THE INTERIOR, GEOLOGICAL SURVEY. SAID ELEVATION IS MARKED AS BEING 7252 FEET.

LARAMIE ENERGY, LLC

**BRUTON 19-17W (TOP OF GAS &
TARGET BOTTOM HOLE)
LOT 4, SECTION 19, T9S, R93W, 6th P.M.
MESA COUNTY, COLORADO**

SURVEYED BY: BRADEN BOX, B.B.

DATE: 03-27-15

DRAWN BY: M.D.

DATE DRAWN: 05-29-15

SCALE: 1" = 1000'

WELL LOCATION PLAT



UELS, LLC
Corporate Office * 85 South 200 East
Vernal, UT 84078 * (435) 789-1017

