

**HALLIBURTON**

---

# **ENCANA OIL & GAS (USA) INC. E-BIZ**

---

**NPEF 02D-G29-595  
PICEANCE  
Garfield County , Colorado**

## **Cement Surface Casing**

### **Cementing Post Job Report**

The Road to Excellence Starts with Safety

Sold To #: 340078	Ship To #: UNKNOWN	Quote #:	Sales Order #: 5416058
Customer: ENCANA OIL & GAS (USA) INC. E-BIZ		Customer Rep: Wall, David	
Well Name: NPEF	Well #: 02D-G29-595	API/UWI #:	
Field: PICEANCE	City (SAP): Parachute	County/Parish: Garfield	State: Colorado
Contractor: Patterson	Rig/Platform Name/Num: Patterson 176		
Job Purpose: Cement Surface Casing			
Well Type: Development Well		Job Type: Cement Surface Casing	
Sales Person: METLI, MARSHALL	Srvc Supervisor: PUCKETT, JACOB	MBU ID Emp #: 339441	

### Job Personnel

HES Emp Name	Exp Hrs	Emp #	HES Emp Name	Exp Hrs	Emp #	HES Emp Name	Exp Hrs	Emp #
KENDALL, JOHN Clifford	5.0	371361	PUCKETT, JACOB A PETERSON, NICK	5 5	339441 435305	CHASE, BARD VALALSTYNE, TROY	5.0 5	422281 420256

### Equipment

HES Unit #	Distance-1 way	HES Unit #	Distance-1 way	HES Unit #	Distance-1 way	HES Unit #	Distance-1 way
10025118	150 mile	10214529C	150 mile	10624108	150 mile	10719782	150 mile
10784080	150 mile	10804579	150 mile	10860107	150 mile		

### Job Hours

Date	On Location Hours	Operating Hours	Date	On Location Hours	Operating Hours	Date	On Location Hours	Operating Hours
11/08/07	5	1						

TOTAL Total is the sum of each column separately

### Job

Formation Name	Formation Depth (MD) Top	Bottom	Job Times
			Called Out 08 - Nov - 2007 15:15 MST
Form Type		BHST	On Location 08 - Nov - 2007 19:00 MST
Job depth MD	2500. ft	Job Depth TVD	Job Started 08 - Nov - 2007 22:02 MST
Water Depth		Wk Ht Above Floor 5. ft	Job Completed 08 - Nov - 2007 23:24 MST
Perforation Depth (MD) From		To	Departed Loc

### Well Data

Description	New / Used	Max pressure psig	Size in	ID in	Weight lbm/ft	Thread	Grade	Top MD ft	Bottom MD ft	Top TVD ft	Bottom TVD ft
9.625 Surface Pipe	Used		9.625	9.001	32.3				2500.		
12.25 Open Hole Section				12.25					2500.		

### Sales/Rental/3<sup>rd</sup> Party (HES)

Description	Qty	Qty uom	Depth	Supplier
PLUG, CMTG, TOP, 9 5/8, HWE, 8 16 MIN/9 06 MA	1	EA		

### Tools and Accessories

Type	Size	Qty	Make	Depth	Type	Size	Qty	Make	Depth	Type	Size	Qty	Make
Guide Shoe					Packer					Top Plug	9 5/8	1	
Float Shoe					Bridge Plug					Bottom Plug			
Float Collar					Retainer					SSR plug set			
Insert Float										Plug Container	9 5/8	1	
Stage Tool										Centralizers			

### Miscellaneous Materials

Gelling Agt	Conc	Surfactant	Conc	Acid Type	Qty	Conc	%
Treatment Fld	Conc	Inhibitor	Conc	Sand Type	Size	Qty	

Fluid Data									
Stage/Plug #: 1									
Fluid #	Stage Type	Fluid Name	Qty	Qty uom	Mixing Density lbrn/gal	Yield ft <sup>3</sup> /sk	Mix Fluid Gal/sk	Rate bbl/min	Total Mix Fluid Gal/sk
1	Water Spacer		20	bbl	8.34	.0	.0	.0	
2	Rockies LT Lead Cement	VERSACEM (TM) SYSTEM (452010)	405	sacks	12.3	2.35	13.41		13.41
	0.125 lbrn	POLY-E-FLAKE (101216940)							
	0.25 %	D-AIR 3000 (101007446)							
	13.409 Gal	FRESH WATER							
3	Rockies LT Tail Cement	VERSACEM (TM) SYSTEM (452010)	120	sacks	12.8	2.08	11.45		11.45
	0.125 lbrn	POLY-E-FLAKE (101216940)							
	0.25 %	D-AIR 3000 (101007446)							
	11.447 Gal	FRESH WATER							
4	Water Displacement		192	bbl	8.34	.0	.0	.0	
Calculated Values		Pressures			Volumes				
Displacement	192	Shut In: Instant		Lost Returns	0	Cement Slurry	214	Pad	
Top Of Cement	SURFACE	5 Min		Cement Returns	32	Actual Displacement	192	Treatment	
Frac Gradient		15 Min		Spacers	20	Load and Breakdown		Total Job	425
Rates									
Circulating		Mixing	7	Displacement	7	Avg. Job			7
Cement Left In Pipe	Amount	0 ft	Reason	Shoe Joint					
Frac Ring # 1 @	ID	Frac ring # 2 @	ID	Frac Ring # 3 @	ID	Frac Ring # 4 @	ID		ID
The Information Stated Herein Is Correct				Customer Representative Signature					

The Road to Excellence Starts with Safety

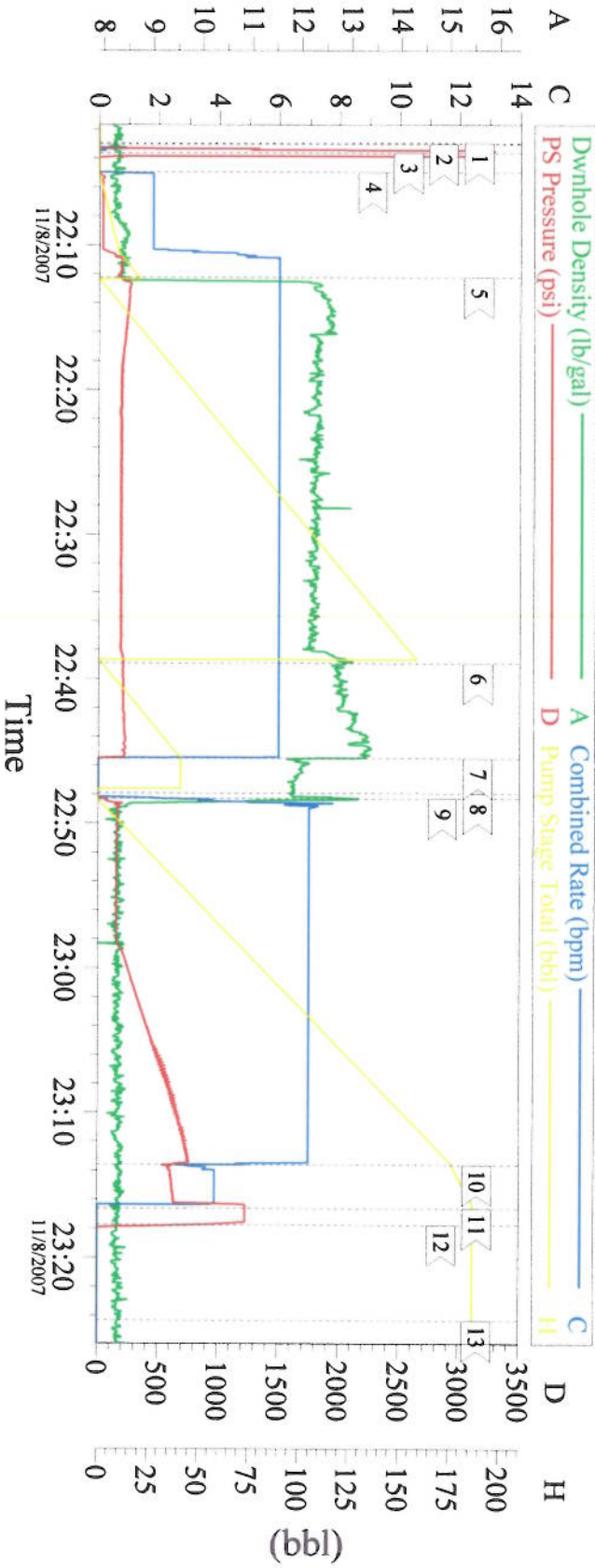
Sold To #: 340078	Ship To #: UNKNOWN	Quote #:	Sales Order #: 5416058
Customer: ENCANA OIL & GAS (USA) INC. E-BIZ		Customer Rep: Wall, David	
Well Name: NPEF	Well #: 02D-G29-595	API/UWI #:	
Field: PICEANCE	City (SAP): Parachute	County/Parish: Garfield	State: Colorado
Legal Description:			
Lat:		Long:	
Contractor: Patterson		Rig/Platform Name/Num: Patterson 176	
Job Purpose: Cement Surface Casing			Ticket Amount:
Well Type: Development Well		Job Type: Cement Surface Casing	
Sales Person: METLI, MARSHALL		Srvc Supervisor: JACOB PUCKETT	MBU ID Emp #:

Activity Description	Date/Time	Cht #	Rate bbl/min	Volume bbl		Pressure psig		Comments
				Stage	Total	Tubing	Casing	
Rig-Up Completed	11/08/2007 12:00							
Pre-Convoy Safety Meeting	11/08/2007 16:45							
Depart from Service Center or Other Site	11/08/2007 17:00							
Arrive at Location from Service Center	11/08/2007 18:30							
Assessment Of Location Safety Meeting	11/08/2007 18:40							
Pre-Rig Up Safety Meeting	11/08/2007 19:00							
Rig-Up Equipment	11/08/2007 19:05							SPOT EQUIPMENT/RIG UP GROUND.
Pre-Job Safety Meeting	11/08/2007 21:05							
Start Job	11/08/2007 22:02							2541TD 2531TP 47.41SJ 9.2MD
Other	11/08/2007 22:03		1	1	1		37.0	PRIME LINES
Test Lines	11/08/2007 22:03		0.4	0.4	0.4		3200.0	
Pump Spacer	11/08/2007 22:04		2	20	20		100.0	H2O
Pump Lead Cement	11/08/2007 22:12		7	169	169		200.0	405SKS@12.3/ 2.35 YEILD/13.41 WATER
Drop Top Plug	11/08/2007 22:24							PLUG AWAY
Pump Tail Cement	11/08/2007 22:38		7	44.5	44.5		150.0	120SKS@12.8/2.08 YEILD/11.45 WATER
Shutdown	11/08/2007 22:45							
Pump Displacement	11/08/2007 22:48		7	0	0		177.0	H2O
Cement Returns to Surface	11/08/2007 22:57		7	160	160		680.0	30 BBLS OF CEMENT TO SURFACE

Activity Description	Date/Time	Cht #	Rate bbl/min	Volume bbl		Pressure psig		Comments
				Stage	Total	Tubing	Casing	
Slow Rate	11/08/2007 23:13		4	180	180		761.0	LAST 15 BBLS OF DISPLACEMENT
Bump Plug	11/08/2007 23:16		4	192	192		1200.0	PLUG BUMPED
Check Floats	11/08/2007 23:17							FLOATS HELD
End Job	11/08/2007 23:24							NO PIPE MOVMENT THROUGH OUT JOB/ GOOD RETURN THROUHG OUT JOB.
Post-Job Safety Meeting (Pre Rig-Down)	11/08/2007 23:30							THANK YOU FOR USING HALLIBURTON OF GRAND JUNCTION CO. JACOB PUCKETT AND CREW.
Rig-Down Equipment	11/08/2007 23:40							
Rig-Down Completed	11/09/2007 01:00							

EVENT #	EVENT	VOLUME	SACKS	WEIGHT	YIELD	GAL/ SK
1	Start Job		<b>1616     <u>Max Psi</u></b>			
	Prime Lines	1				
6	Test Lines	3000.0				
9	H2O Spacer	20.0				
13	Lead Cement	169.5	405	12.3	2.35	13.41
15	Tail Cement	44.5	120	12.8	2.08	11.45
22	Drop Plug	0.0				
23	Displace with H2O	192.0				
26	Land Plug	530.0				
2	Release Psi / Job Over	1030.0				
			<b>Do Not Overdisplace</b>			
DISPLACEMENT	TOTAL PIPE	SHOE JOINT LENGTH	FLOAT COLLAR	BBL/FT	H2O REQ.	
191.98	2531	47.41	2483.59	0.0773	500	
PSI to Lift Pipe	1074	<b>*****Use Mud Scales on Each Tier*****</b>				
Total Displacement	191.98					
<b>CALCULATED DIFFERENTIAL PSI</b>		530	<b>TOTAL FLUID PUMPED</b>		425	
Collapse	2020	Burst	3520	SO#	5416058	

# 9 5/8" Surface



Intersection		PP	Intersection		PP		
1	START JOB	22:02:57	0.000	2	PRIME LINES	22:03:02	0.000
3	TEST LINES	22:03:38	3257	4	PUMP WATER SPACER	22:04:58	-10.97
5	PUMP LEAD CEMENT	22:12:14	166.2	6	PUMP TAIL CEMENT	22:38:55	202.0
7	SHUTDOWN	22:45:29	15.40	8	DROP TOP PLUG	22:47:54	-19.68
9	PUMP DISPLACEMENT	22:48:16	15.74	10	SLOW RATE	23:13:35	585.1
11	BUMP PLUG	23:16:36	1230	12	CHECK FLOATS	23:17:44	749.5
13	END JOB	23:24:18	-23.00				

Customer: ENCANA  
 ADC USED: YES  
 WELL # 02D-G29-595

Job Date: 11/08/07  
 Job Type: 9 5/8 SURFACE  
 LEASE NPEF

Ticket #: 5416058  
 CEMENTER Jacob Puckett  
 CO REP DAVID WALL

HALLIBURTON  
 Cen Win v1.7.2  
 08-Nov-07 23:45

*Field Ticket*

<b>Field Ticket Number:</b> 5416058	<b>Field Ticket Date:</b> Thursday, November 08, 2007
<b>Bill To:</b> ENCANA USA PARACHUTE FIELD OFC DO NOT MAIL - 370 17TH ST STE 1700 DENVER, CO 80202	<b>Job Name:</b> Surface Casing <b>Order Type:</b> Streamline Order (ZOH) <b>Well Name:</b> NPEF 02D-G29-595 <b>Company Code:</b> 1100 <b>Customer PO No.:</b> NA <b>Shipping Point:</b> Grand Junction, CO, USA <b>Sales Office:</b> Rocky Mountains BD <b>Well Type:</b> <b>Well Category:</b>
<b>Ship To:</b> ENCANA OIL & GAS (USA) INC. E-BIZ NPEF, 02D-G29-595 Parachute,	

Material	Description	QTY	UOM	Base Amt	Unit Amt	Gross Amount	Discount	Net Amount
7521	CMT SURFACE CASING BOM	1	JOB	0.00	0.00	0.00	63%	0.00
2	MILEAGE FOR CEMENTING CREW,ZI	150	MI	0.00	5.76	864.00	63%	319.68
	<i>Number of Units</i>	1						
1	ZI-MILEAGE FROM NEAREST HES BASE,/UNIT	150	MI	0.00	9.79	1,468.50	63%	543.34
	<i>Number of Units</i>	1						
16091	ZI - PUMPING CHARGE	1	EA	0.00	5,584.00	5,584.00	63%	2,066.08
	<i>DEPTH</i>	2531						
	<i>FEET/METERS (FT/M)</i>		FT					
132	PORT. DAS W/CEMWIN;ACQUIRE W/HES, ZI	1	JOB	0.00	1,649.00	1,649.00	63%	610.13
	<i>NUMBER OF DAYS</i>	1						
74038	ZI PLUG CONTAINER RENTAL-1ST DAY	1	EA	1,322.00	0.00	1,322.00	63%	489.14
	<i>DAYS OR FRACTION (MIN1)</i>	1						
90	ZI QUICK LATCH ATTACHMENT	1	JOB	0.00	616.00	616.00	63%	227.92
	<i>SIZE IN INCHES/MILLIMETER</i>	9.625						
	<i>INCHES/MILLIMETERS (IN/MM)</i>		IN					
86954	ZI FUEL SURCHG-CARS/PICKUPS<1 1/2TON	150	MI	0.00	0.15	22.50		22.50
	<i>Number of Units</i>	1						
86955	ZI FUEL SURCHG-HEAVY TRKS >1 1/2 TON	150	MI	0.00	0.45	67.50		67.50
	<i>Number of Units</i>	1						
7	ENVIRONMENTAL SURCHARGE,/JOB,ZI	1	JOB	0.00	134.00	134.00		134.00
8	IRON SAFETY INSPECTION SURCHARGE /JOB ZI	1	JOB	0.00	83.00	83.00		83.00
87605	ZI FUEL SURCHG-CMT & CMT ADDITIVES	75	MI	0.00	0.15	307.24		307.24
	<i>NUMBER OF TONS</i>	27.31						

Material	Description	QTY	UOM	Base Amt	Unit Amt	Gross Amount	Discount	Net Amount
372867	Cmt PSL - DOT Vehicle Charge, CMT	3	EA	0.00	241.00	723.00		723.00
76400	ZI MILEAGE,CMT MTLs DEL/RET MIN NUMBER OF TONS	75 27.31	MI	0.00	3.35	6,861.64	63%	2,538.81
3965	HANDLE&DUMP SVC CHRg, CMT&ADDITIVES,ZI NUMBER OF EACH	614 1	CF	0.00	5.49	3,370.86	63%	1,247.22
101214575	PLUG,CMTG, TOP,9 5/8,HWE,8.16 MIN/9.06 MA	1	EA	0.00	454.00	454.00	63%	167.98
45	VersaCem	405	EA	0.00	66.46	26,916.30	63%	9,959.03
452010	CMT, VersaCem (TM) system	405	SK	0.00	66.46	0.00		0.00
45	VersaCem	120	EA	0.00	66.57	7,988.40	63%	2,955.71
452010	CMT, VersaCem (TM) system	120	SK	0.00	66.57	0.00		0.00
116	BOOSTER PUMP-SKID,/DAY,ZI NUMBER OF DAYS	1 1	EA	0.00	1,362.00	1,362.00	63%	503.94
16092	ADDITIONAL HOURS (PUMPING EQUIPMENT), ZI HOURS	1 1	EA	0.00	956.00	956.00	63%	353.72
				<b>Totals</b>	<b>USD</b>	<b>60,749.94</b>	<b>37,430.00</b>	<b>23,319.94</b>

Halliburton Rep:

Customer Agent:

Halliburton Approval

David Wall

THIS OUTPUT DOES NOT INCLUDE TAXES. APPLICABLE SALES TAX WILL BE BILLED ON THE FINAL INVOICE.  
CUSTOMER HEREBY ACKNOWLEDGES RECEIPT OF THE MATERIALS AND SERVICES DESCRIBED ABOVE AND ON THE ATTACHED DOCUMENTS.

X

Customer Signature

FIELD TICKET TOTAL USD

23,319.94

**Customer Information Only**

AFE/Cost Center

Code/Operaton Catgry

Cust/EnCana Rep