

Exploration & Production Waste Management Plan  
Updated October 1, 2016  
Land Application & Incorporation of Water-Based Bentonitic Drilling Fluids  
& Associated Drill Cuttings  
Bayswater Exploration & Production, LLC

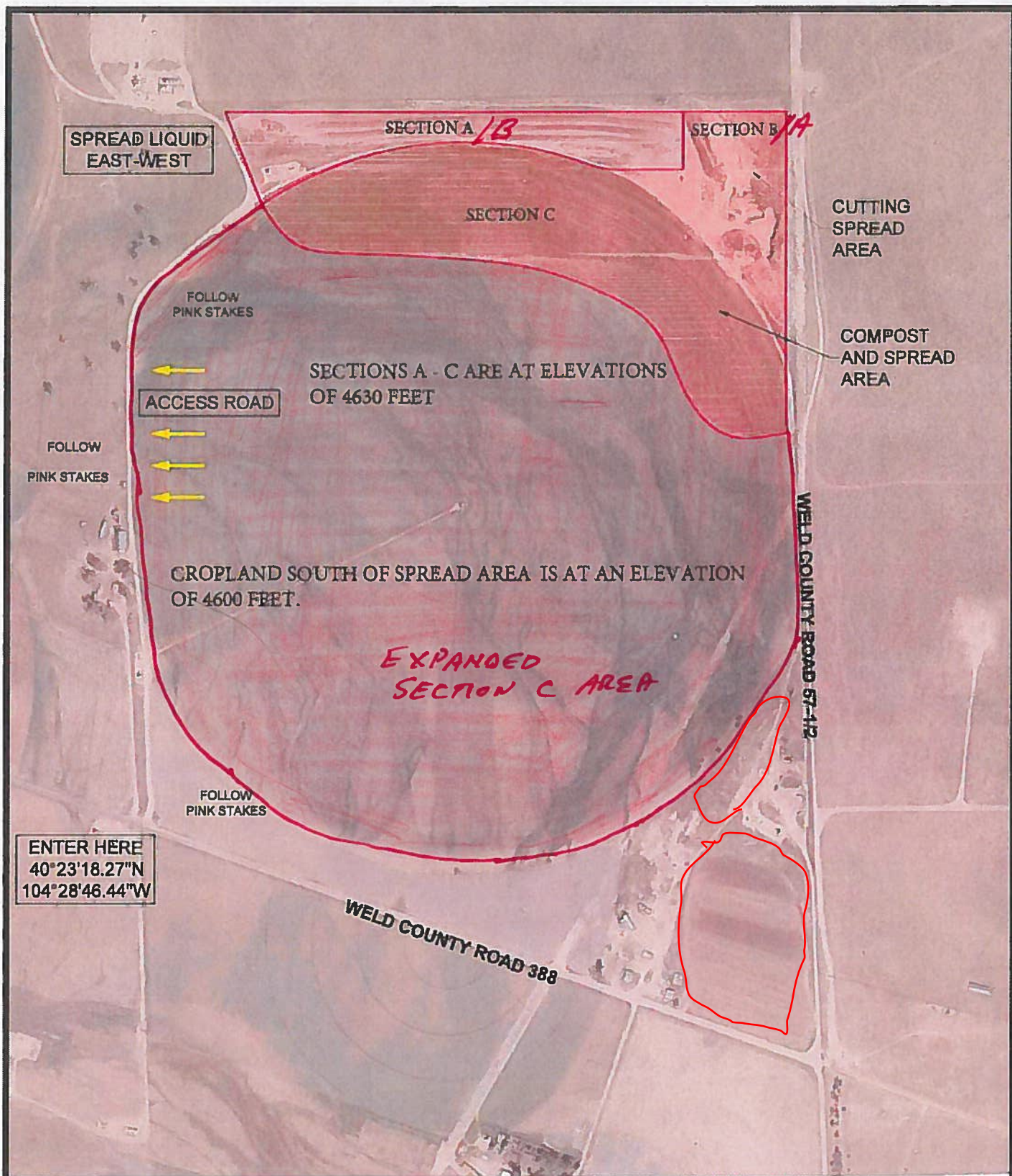
**Subject Property: Cockroft Farms**

**Facility ID: 441086**

SE ¼, NE ¼, Sec 19, T5N, R63W  
Weld County Road 388  
Weld County, Kersey, Colorado

This Exploration & Production (E&P) Waste Management Plan is to update that original WMP that was submitted on 3/19/15 and approved on 03/27/15. All portions of the original WMP will remain the same with the following updates:

- Figure No. 2 will be replaced entirely with the attached Updated Figure No. 2
- The Sections A & B will essentially be combined together as shown on the Updated Figure No. 2
- Section C will be expanded in area as shown on the Updated Figure No. 2



NORTH

0 100 200 300 400 500

SCALE IN FEET

**UPDATED** FIGURE 2  
SITE CONDITIONS MAP

KINETIC HYDROVAC  
COCKROFT LAND APPLICATION SITE  
SE 1/4, NE 1/4, Sec 19, 5N, 63W  
KERSEY, COLORADO

PROJECT  
1-12558-15117aa

DATE  
3/16/2013

DRAFT  
DRS

REVIEW



10-1-16