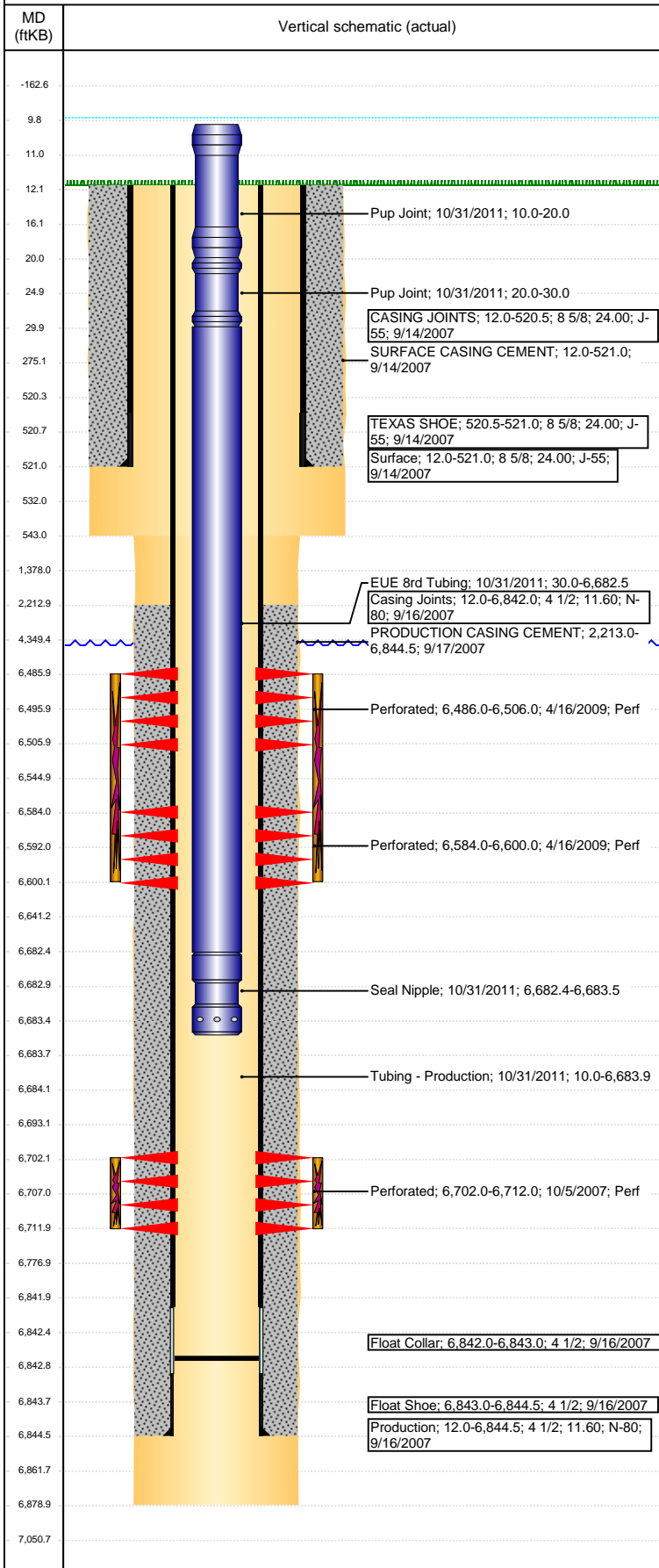


Well Name: WELLS RANCH USX BB03-13

VERTICAL - ORIGINAL HOLE, 1/23/2017 10:52:13 AM



Well Header

API 05-123-26263	Business Unit DJ BASIN	District 15	Well Config VERTICAL
Original KB Elevation (ft) 4,723	KB - GL / MSL (ftKB) 12.00	Spud Date 9/13/2007	P & A Date
Comment			

Directions To Well

FROM WCR 67 & WCR 68, EAST .2 MILE, SOUTH 2.5 MILES TO COW CAMP, SOUTHWEST .5 MILE, SOUTH .9 MILE, EAST INTO LOCATION.

Congressional Location

Quarter 3 SW	Quarter 4 SW	Section 3	Township 5	Twntshp N/S Dir N	Range 63	Range E/W Dir W
-----------------	-----------------	--------------	---------------	----------------------	-------------	--------------------

Bottom Hole Location

North-South Distance (ft)	From N or S Line	East-West Distance (ft)	From E or W Line
---------------------------	------------------	-------------------------	------------------

Plug Back Total Depths

Date	Depth (ftKB)	Method	Com
9/16/2007	6,842.0	CASING TALLY	TOP OF FLOAT COLLAR
9/27/2007	6,808.0	CASED HOLE LOG	DEPTH LOGGER ON CBL
10/31/2011	6,842.7	TBG TALLY	

Wellbore Sections

Section Des	Size (in)	Act Top, MD (ftKB)	Act Btm, MD (ftKB)
SURFACE	12 1/4	12	543
PRODUCTION	7 7/8	543	6,879

Zone Statuses

Zone Name	Status Date	Status	Fluid Type	Job	Prod Method
CODELL	2/21/2008	PR		DRILLING/CO...	
CODELL	4/15/2009	SI		RECOMPLETI...	
CODELL	10/31/2011	PR		TUBING REPA...	
NIOBRARA	5/5/2009	PR		RECOMPLETI...	

Casing Strings

Surface, 521.0ftKB

Casing Description	Run Date	OD (in)	Wt/Len (l...)	Grade	Top, MD (ft...)	MD (ftKB)
Surface	9/14/2007	8 5/8	24.00	J-55	12.0	521.0

Production, 6,844.5ftKB

Casing Description	Run Date	OD (in)	Wt/Len (l...)	Grade	Top, MD (ft...)	MD (ftKB)
Production	9/16/2007	4 1/2	11.60	N-80	12.0	6,844.5

Cement

Description	Top Depth (ftKB)	Bottom Depth (ftKB)
SURFACE CASING CEMENT	12.0	521.0
PRODUCTION CASING CEMENT	2,213.0	6,844.5

Tubing Strings

Tubing Description	Run Date	String...	ID (in)	Wt (lb/ft)	Grade	Len (ft)	Set De...
Tubing - Production	11/15/2007	2 3/8	2.00	4.70	J-55	6,679.21	
Tubing - Production	4/30/2009	2 3/8	2.00	4.70	J-55	6,463.74	
Tubing - Production	10/31/2011	2 3/8	2.00	4.70	J-55	6,673.95	

Tubing Components

Item Des	OD (in)	Wt (lb/ft)	Grade	Jts	Len (ft)	Btm (ftKB)	Btm (TVD) (ftKB)
Pup Joint	2 3/8	4.70	J-55	1	10.00	20.0	
Pup Joint	2 3/8	4.70	J-55	1	10.00	30.0	
EUE 8rd Tubing	2 3/8	4.70	J-55	215	6,652.45	6,682.4	
Seal Nipple	2 3/8	4.70	N-80	1	1.10	6,683.5	
Notched collar	2 3/8	4.70	J-55	1	0.40	6,683.9	

Other In Hole

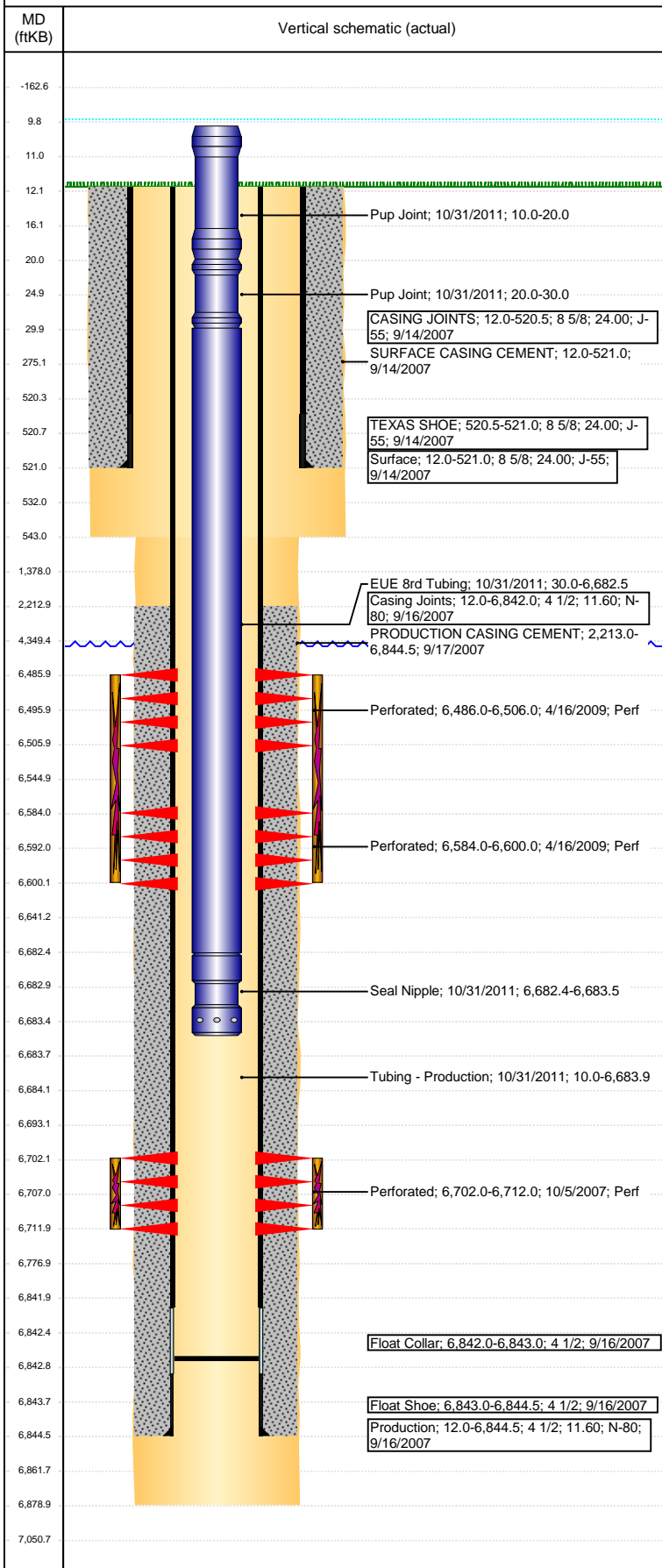
Run Date	Des	OD (in)	Top (ftKB)	Btm (ftKB)

Logs

Date	Type	Top, MD (ftKB)	Btm, MD (ftKB)
9/16/2007	COMPENSATED DENSITY	2,650.0	6,829.0
9/16/2007	INDUCTION	521.0	6,849.0
9/27/2007	CBL/CCL/GR	2,100.0	6,806.0
5/13/2015	GYRO	12.0	6,600.0

Well Name: WELLS RANCH USX BB03-13

VERTICAL - ORIGINAL HOLE, 1/23/2017 10:52:15 AM



Perforation Data					
Linked Zone	Bnch/St g	Sum of Entered Shot Total	Top (ftKB)	Btm (ftKB)	Date
NIOBRARA, ORIGINAL HOLE	A	80	6,486.00	6,506.00	4/16/2009
NIOBRARA, ORIGINAL HOLE	B	64	6,584.00	6,600.00	4/16/2009
CODELL, ORIGINAL HOLE		40	6,702.00	6,712.00	10/5/2007
Total (Sum)		184			
Stimulation Intervals					
Start Date 1/10/2008		Primary Job Type DRILLING/COMPLETION - ORIGINAL			
Technical Result Success		Tech Result Details According to Plan		Tech Result Note	
Comment CODELL FRAC. LOST 2 PUMPS DURING THE JOB BUT WE WERE ABLE TO MAINTAIN THE RATE.					
Start Date 4/27/2009		Primary Job Type RECOMPLETION			
Technical Result Success		Tech Result Details According to Plan		Tech Result Note	
Comment NIO RECOMPLETE. TREATMENT WENT WELL. RAN FR @ 2 GPT. AVG NOLTE+0.08.					