



January 20, 2017

Mr. Matthew Lepore, Director
Colorado Oil & Gas Conservation Commission
1120 Lincoln Street, Ste. 801
Denver, Colorado 80203

RE: Rule 318.A.e.
Wake 22
Wake 23
Wake 24

Surface Location: NWSE, Section 32, Township 6 North, Range 65 West, Weld County, CO

Dear Mr. Lepore,

Extraction Oil and Gas is planning to drill the captioned horizontal wells in accordance with the provision of COGCC Rule 318A.e.

The proposed wellbore spacing unit consists of:

Section 31-6N-65W: S/2S/2
Section 32-6N-65W: S/2S/2
Section 6-5N-65W: N/2N/2
Section 5-5N-65W: N/2N/2

The spacing unit is a 640-acre wellbore spacing unit for the Niobrara and Codell formations.

Extraction Oil and Gas hereby certifies to the Director that all Owners within the proposed spacing unit above were notified and 30 days have passed. An objection was received from Synergy Resources Corporation, but was withdrawn on December 16, 2016.

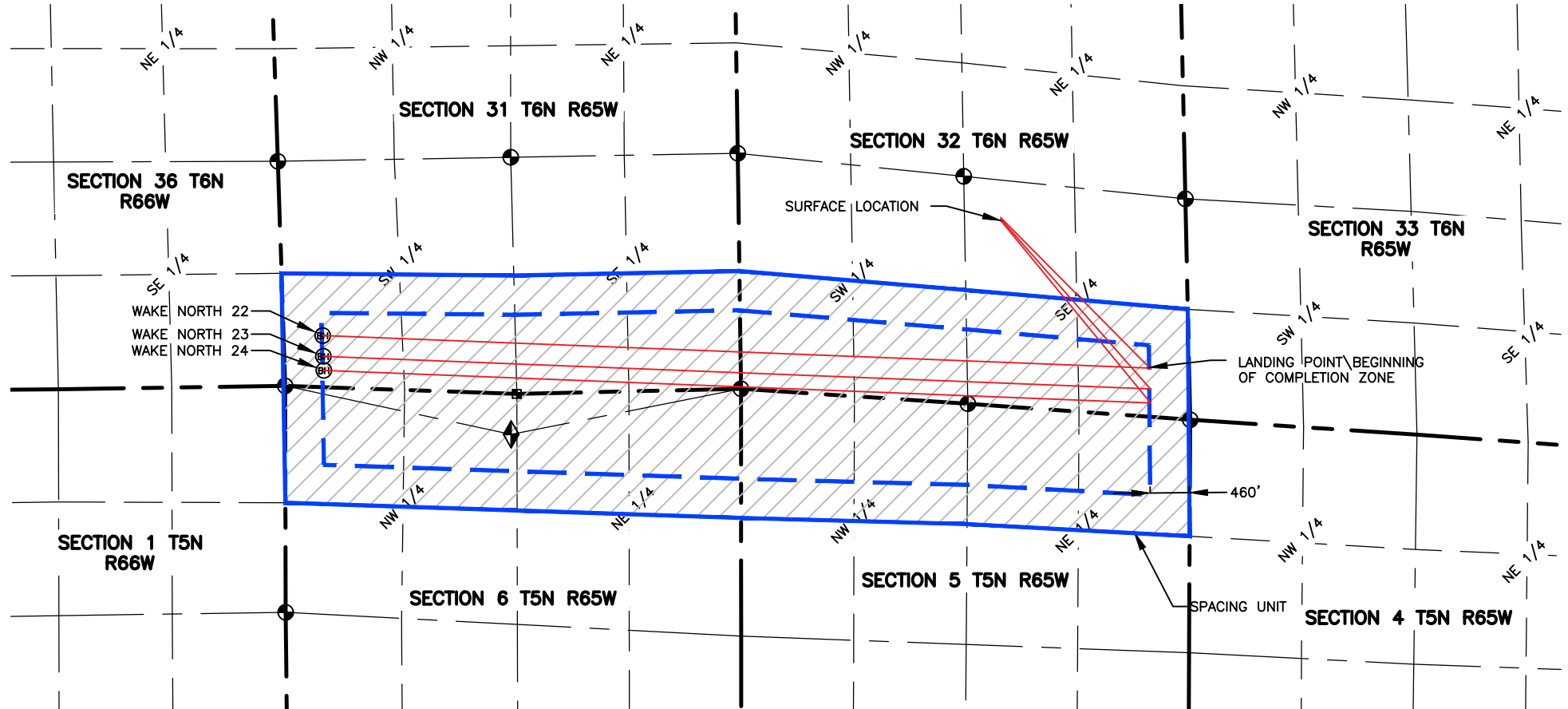
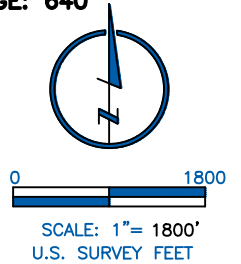
If you have any questions or issues regarding this permit, please contact Alyssa Andrews at (720) 481-2379.

Sincerely,

Alyssa Andrews
Regulatory Analyst
Extraction Oil & Gas, LLC

NAME: WAKE NORTH PSU 22-24
SPACING UNIT: S/2 S/2 SEC 31, S/2 S/2 SEC 32, T6N, R65W, N/2 N/2 SEC 6, N/2 N/2 SEC 5, T5N R65W; UNIT ACREAGE: 640

WELL NAME	SURFACE LOCATION				LANDING POINT/BEGIN HORIZONTAL COMPLETION ZONE				BOTTOM HOLE/END HORIZONTAL COMPLETION ZONE				COMPLETION ZONE BEARING	COMPLETION ZONE LENGTH
	DIST.	DIR.	DIST.	DIR.	DIST.	DIR.	DIST.	DIR.	DIST.	DIR.	DIST.	DIR.		
WAKE NORTH 22	2208'	FSL	2175'	FEL	571'	FSL	460'	FEL	606'	FSL	460'	FWL	N87°44'48"W	9726.64'
WAKE NORTH 23	2192'	FSL	2175'	FEL	328'	FSL	460'	FEL	362'	FSL	460'	FWL	N87°44'48"W	9723.94'
WAKE NORTH 24	2176'	FSL	2176'	FEL	163'	FSL	460'	FEL	197'	FSL	460'	FWL	N87°44'48"W	9722.11'



LAMP RYNEARSON
 & ASSOCIATES

4715 Innovation Drive 970.226.0342 | P
 Fort Collins, CO 80525 970.226.0879 | F
www.LRA-Inc.com

PROPOSED SPACING UNIT
 WAKE NORTH 32-K

LEGEND

- ALIQUOT CORNER
- ⊕ BOTTOM HOLE
- COMPUTED FROM GLO RECORDS
- SECTION LINE
- QUARTER SECTION LINE
- SIXTEENTH LINE
- ◆ UNION COLONY CORNER
- △ COMPUTED ALIQUOT CORNER FROM MONUMENT ACCESSORIES

drawn by JMC date 6/23/2016 cogcc id project - task number 0215045.01 book and page MRI 4/25 surface - location NW/4, SE/4 SEC 32 T6N R65W