

#### WELL LOCATION DATA:

LATITUDE: 40.44260°N  
 LONGITUDE: -104.68559°W  
 ELEVATION: 4649'  
 PDOP: 1.8  
 OPERATOR: C.FISHER  
 SURFACE USE: CROP LAND  
 PROPOSED GROUND ELEVATION: 4648.5'

#### NEAREST CULTURAL ITEMS:

PROPERTY LINE: 168'  
 BUILDING: 445'  
 BUILDING UNIT: 747'  
 HIGH OCCUPANCY BUILDING UNIT: 5280'+  
 DESIGNATED OUTSIDE ACTIVITY AREA: 5280'+  
 PUBLIC ROAD: 618'  
 ABOVE GROUND UTILITY: 482'  
 RAILROAD: 1183'

#### LEGEND

- ALIQUOT CORNER
- ⊙ BOTTOM HOLE
- PROPOSED WELL
- A.C. ALUMINUM CAP
- R.B. RANGE BOX
- REB. REBAR



0 1000

SCALE: 1"= 1000'  
 U.S. SURVEY FEET

#### LAND SURVEYOR'S CERTIFICATION

LAMP, RYNEARSON & ASSOCIATES, INC., OF FT. COLLINS, COLORADO HAS, IN ACCORDANCE WITH A REQUEST FROM ERIN MATHEWS FOR EXTRACTION OIL AND GAS, DETERMINED THE SURFACE LOCATION OF THE WELL DESIGNATED AS WAKE NORTH 24 TO BE 2176' FROM THE SOUTH LINE AND 2176' FROM THE EAST LINE OF SECTION 32, TOWNSHIP 6 NORTH, RANGE 65 WEST OF THE 6TH P.M., WELD COUNTY, COLORADO.

#### NOTES:

1. DISTANCES ARE MEASURED PERPENDICULAR TO NEAREST SECTION LINE AND ARE SHOWN ON THE SAME SIDE OF THE SECTION LINE WHERE THE WELL IS LOCATED.
2. THIS MAP DOES NOT REPRESENT A MONUMENTED BOUNDARY SURVEY. SIXTEENTH CORNER LOCATIONS ARE COMPUTED, UNLESS OTHERWISE NOTED.
3. BOTTOM HOLE LOCATIONS AND HORIZONTAL COMPLETION ZONE PROVIDED BY OTHERS.

#### BASIS OF BEARING:

THE SOUTH LINE OF THE SOUTHEAST QUARTER OF SECTION 32-T6N-R65W BEARS N85°52'57"W BETWEEN THE SOUTHEAST CORNER OF SECTION 32 MONUMENTED WITH A 2 1/2" A.C. IN R.B. STAMPED "LS 17500" AND THE SOUTH QUARTER CORNER OF SECTION 32 MONUMENTED WITH A 3 1/4" A.C. IN R.B. STAMPED "LS 28259" BASED ON THE COLORADO STATE PLANE COORDINATE SYSTEM, NORTH ZONE 0501.

ELEVATIONS ARE NAVD 88, USING THE CONUS GEOID 03 AS OBSERVED FROM GPS OBSERVATIONS

FRANK A. KOHL  
 COLORADO PLS 37067  
 DATE OF SURVEY: 8/19/2010 (SECTION CONTROL)  
 DATE OF SURVEY: 05/18/2016 (WELL LOCATION)



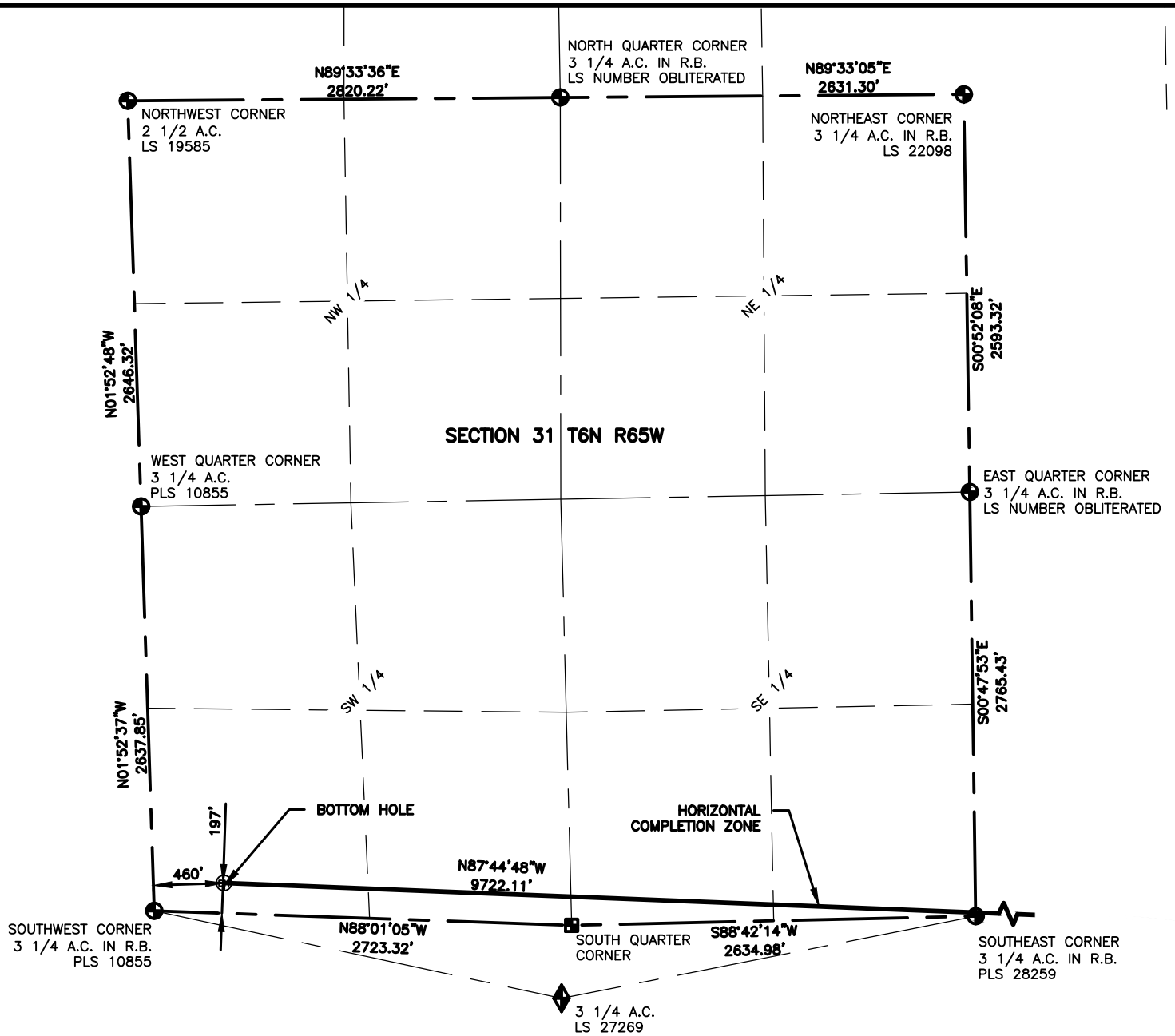
**LAMP RYNEARSON**  
 & ASSOCIATES

4715 Innovation Drive 970.226.0342 | P  
 Fort Collins, CO 80525 970.226.0879 | F  
 www.LRA-Inc.com

PROPOSED WELL LOCATION EXHIBIT  
 WAKE NORTH 24  
 1 OF 2

DRAWN BY	DATE	COGCC ID	PROJECT - TASK NUMBER	BOOK AND PAGE
JMC	6/23/2016	0215045.01	Wake North 32-K	MRI 4/25
PATH\FILENAME	P:\_Engineering\0215045.01 Wake North 32-K\DRAWINGS\EXHIBITS\PRELIMINARY PLAT			

**SURFACE - LOCATION**  
 SE/4 SEC 32 T6N R65W

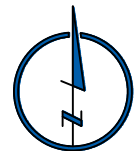


#### NOTES:

- DISTANCES ARE MEASURED PERPENDICULAR TO NEAREST SECTION LINE AND ARE SHOWN ON THE SAME SIDE OF THE SECTION LINE WHERE THE WELL IS LOCATED.
- THIS MAP DOES NOT REPRESENT A MONUMENTED BOUNDARY SURVEY. SIXTEENTH CORNER LOCATIONS ARE COMPUTED, UNLESS OTHERWISE NOTED.
- BOTTOM HOLE LOCATIONS AND HORIZONTAL COMPLETION ZONE PROVIDED BY OTHERS.

#### LEGEND

- ALIQUOT CORNER
- ⊙ BOTTOM HOLE
- COMPUTED FROM GLO RECORDS
- ◆ UNION COLONY CORNER
- A.C. ALUMINUM CAP
- R.B. RANGE BOX



SCALE: 1"= 1000'  
U.S. SURVEY FEET



4715 Innovation Drive 970.226.0342 | P  
Fort Collins, CO 80525 970.226.0879 | F  
www.LRA-Inc.com

PROPOSED WELL LOCATION EXHIBIT  
WAKE NORTH 24  
2 OF 2

DRAWN BY	DATE	COGCC ID	PROJECT - TASK NUMBER	BOOK AND PAGE
JMC	6/23/2016	0215045.01	Wake North 32-K	MRI 4/25
PATH\FILENAME	P:\_Engineering\0215045.01 Wake North 32-K\DRAWINGS\EXHIBITS\PRELIMINARY PLAT			

**SURFACE - LOCATION**  
SE/4 SEC 32 T6N R65W