

BONANZA CREEK ENERGY INC.

WELD COUNTY, COLORADO (NAD 83)

NW NW SEC. 26 T5N R63W 6th P.M.

STATE NORTH PLATTE A-E-26HNB

ORIGINAL WELLBORE

27 October, 2016

Plan: PROPOSAL #2





Project: WELD COUNTY, COLORADO (NAD 83)
Site: NW NW SEC. 26 T5N R63W 6th P.M.
Well: STATE NORTH PLATTE A-E-26HNB
Wellbore: ORIGINAL WELLBORE
Design: PROPOSAL #2

ANNOTATIONS

TVD	MD	Inc	Azi	+N/-S	+E/-W	VSec	Dep	Annotation
0.0	0.0	0.00	0.00	0.0	0.0	0.0	0.0	SHL: 741ft FNL & 1241ft FWL of Sec 26
1700.0	1700.0	0.00	0.00	0.0	0.0	0.0	0.0	START NUDGE (2°/100ft BUR)
2918.7	2958.8	25.18	303.04	148.4	-228.1	-71.8	272.1	EOB TO 25.18° INC
4605.7	4822.9	25.18	303.04	580.7	-892.9	-281.0	1065.1	END OF TANGENT
5824.4	6081.7	0.00	303.04	729.1	-1121.0	-352.8	1337.2	EOD TO VERTICAL
5854.4	6111.7	0.00	0.00	729.1	-1121.0	-352.8	1337.2	KOP (12°/100ft BUR)
6315.6	6736.7	75.00	188.88	379.5	-1175.6	-3.2	1691.1	START OF TANGENT
6341.5	6836.7	75.00	188.88	284.0	-1190.5	92.3	1787.7	END OF TANGENT
6357.7	6961.7	90.00	188.88	161.9	-1209.6	214.4	1911.3	HZ LP *NEW*: 589.2ft FNL & 28.2ft FEL of Sec 26
6357.7	7232.5	90.00	180.76	-107.7	-1232.3	478.1	2182.1	EOT TO 180.76° AZ
6357.7	11138.2	90.00	180.76	-4013.0	-1283.9	4213.4	6087.8	BHL: 470ft FSL & 10ft FWL of Sec 26

LOCAL COORDINATES:

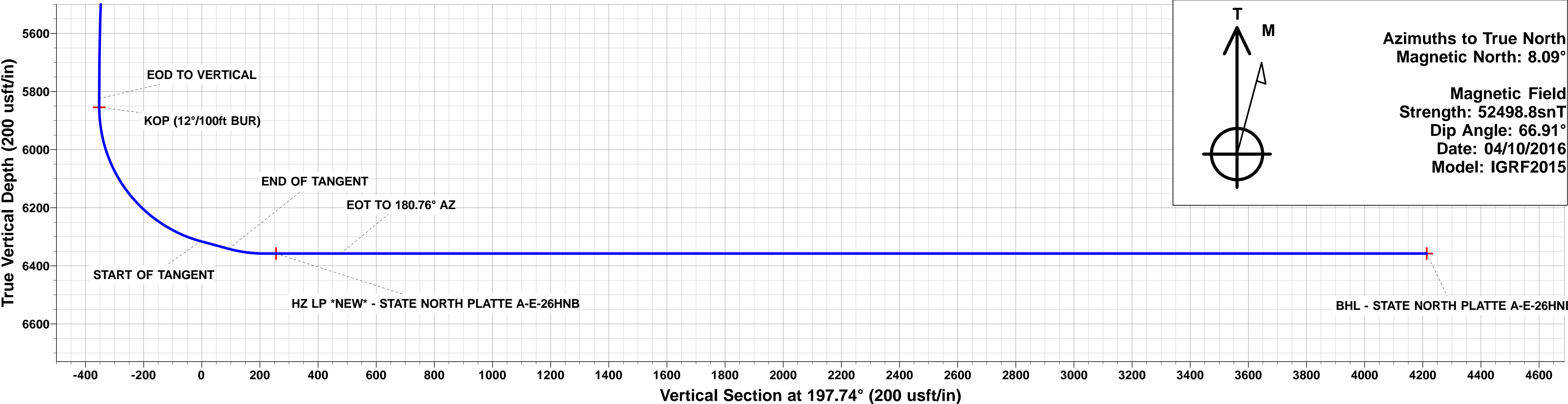
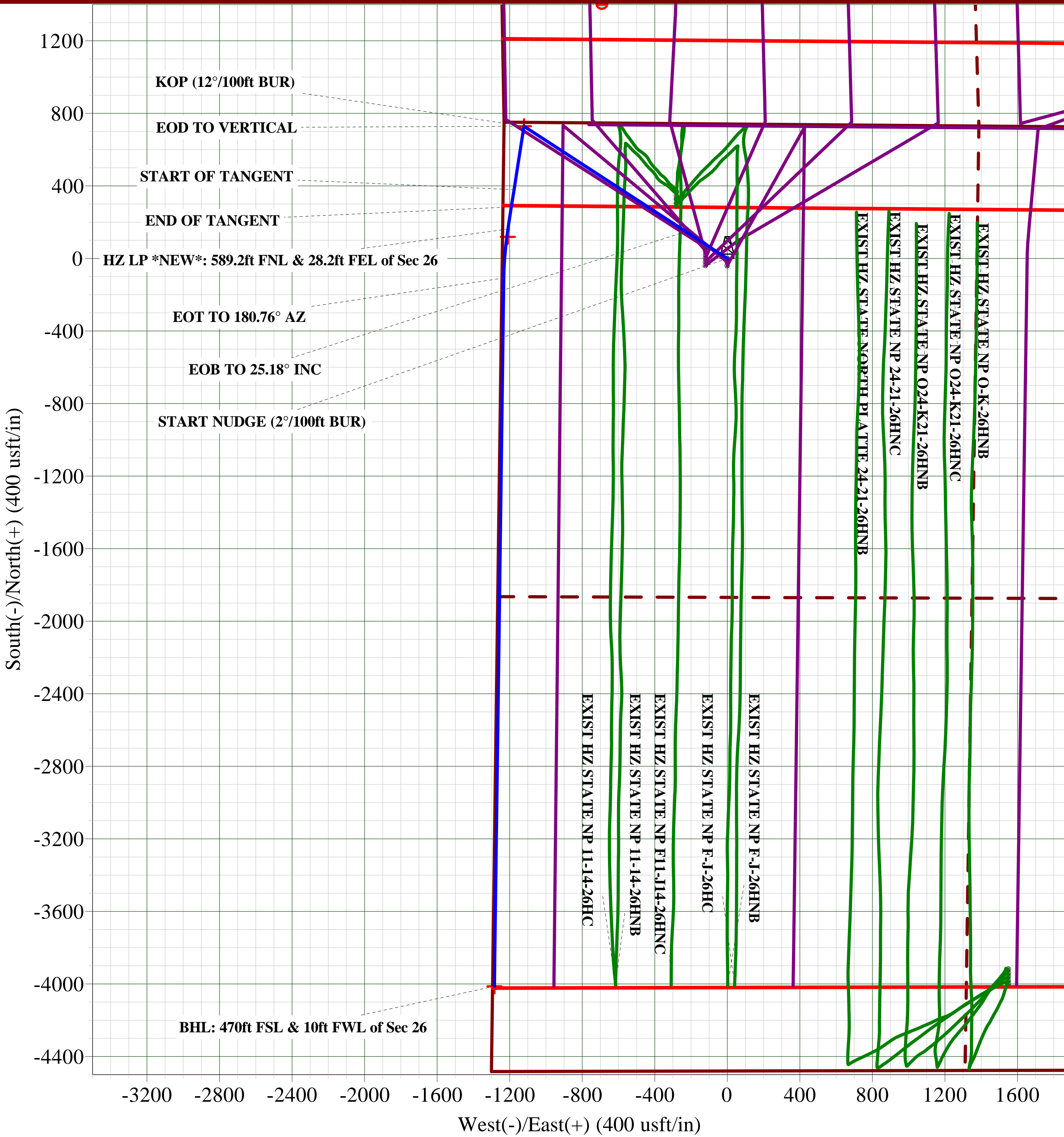
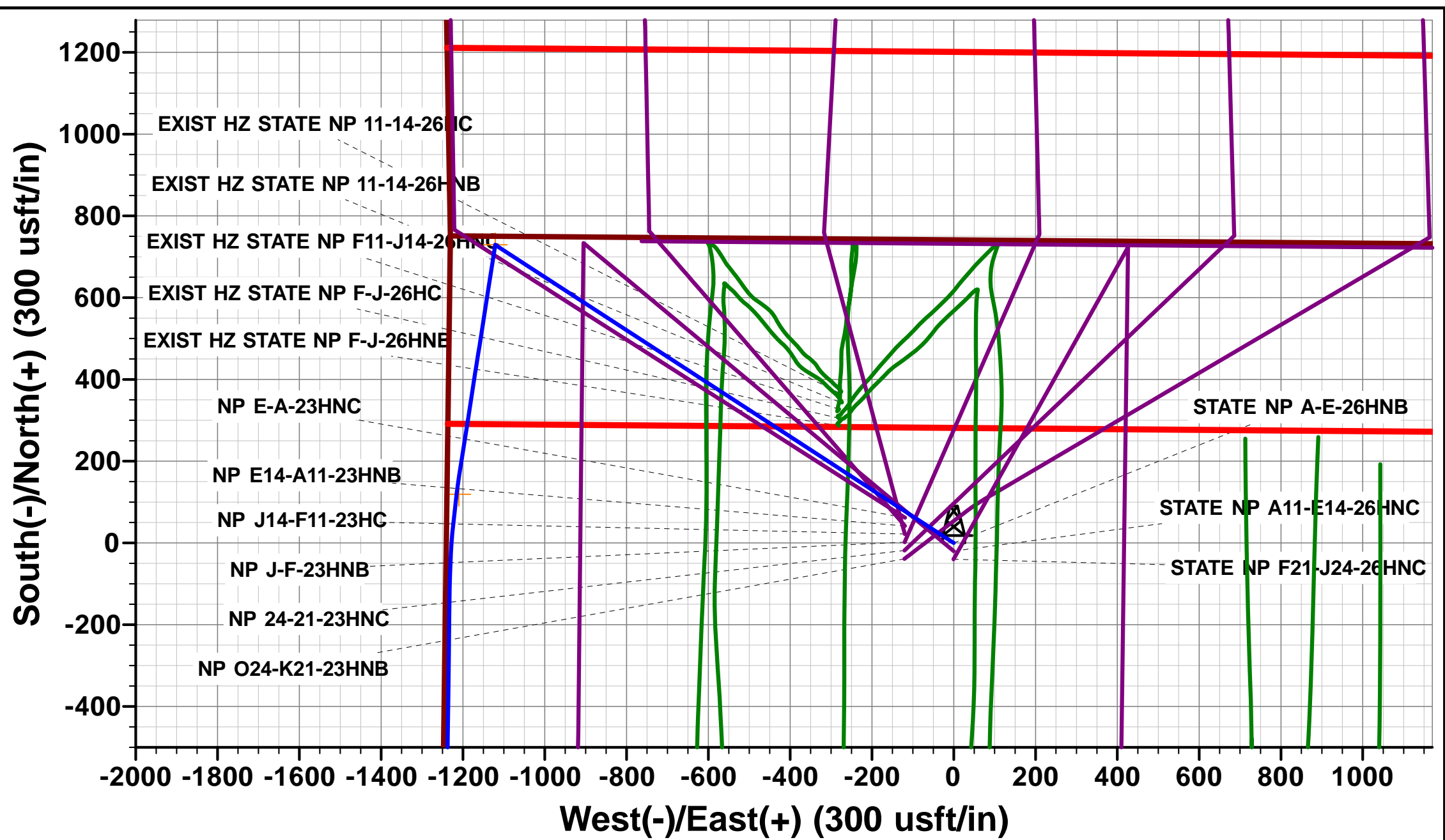
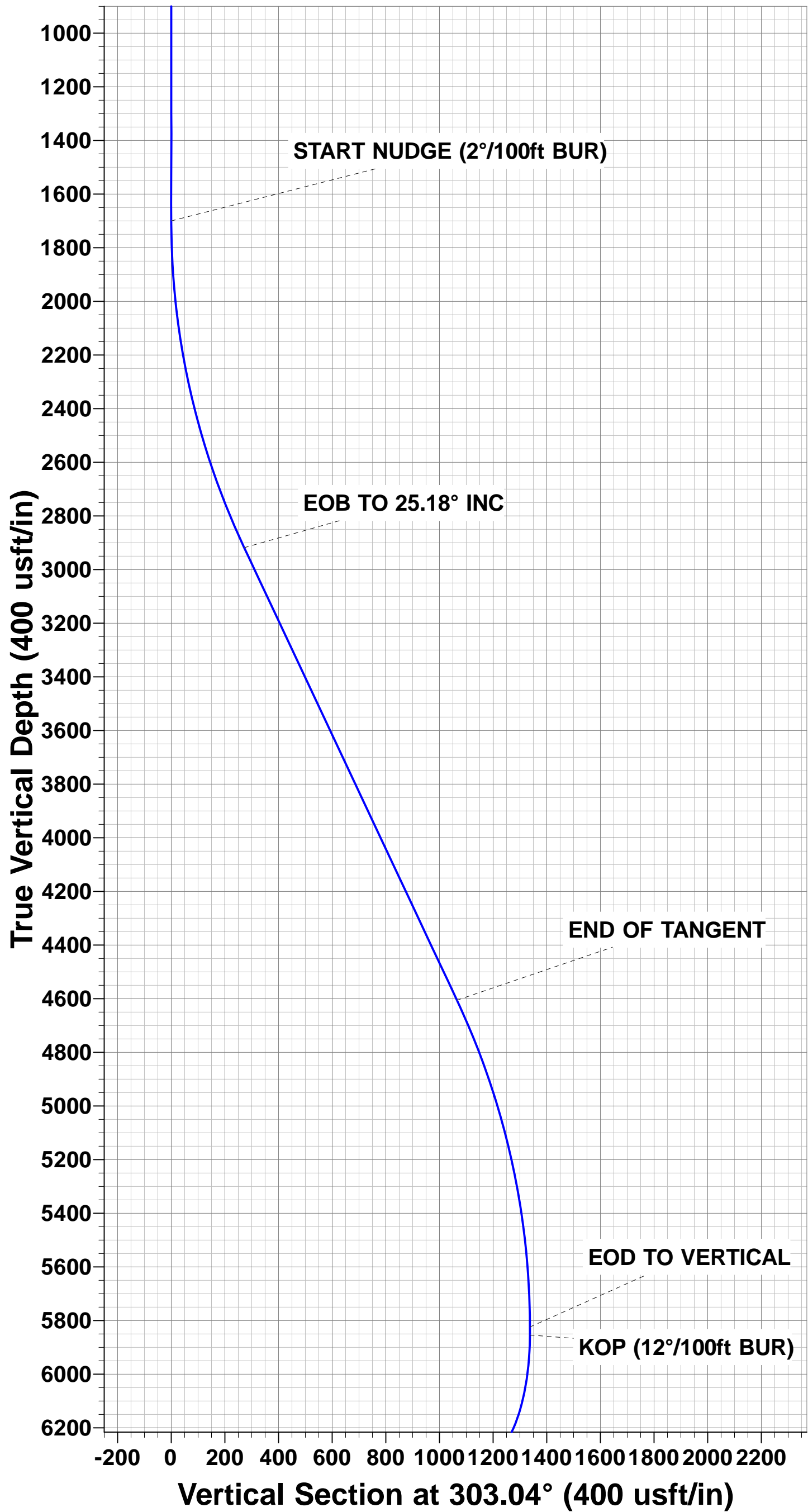
SHL: 741ft FNL & 1241ft FWL of Sec 26

HZ LP *NEW*: 589.2ft FNL & 28.2ft FWL Sec 26

BHL: 470ft FSL & 10ft FWL Sec 26

WELLBORE TARGET DETAILS (LAT/LONG)

Name	TVD	+N/-S	+E/-W	Latitude	Longitude
KOP - STATE NORTH PLATTE A-E-26HNB (P2)	5854.4	729.1	-1121.0	40.377454	-104.412026
BHL - STATE NORTH PLATTE A-E-26HNB	6357.7	-4013.0	-1283.9	40.364437	-104.412610
HZ LP *NEW* - STATE NORTH PLATTE A-E-26HNB	6357.7	119.0	-1210.0	40.375779	-104.412345



Database:	EDM 5000.1 Single User Db	Local Co-ordinate Reference:	Well STATE NORTH PLATTE A-E-26HNB
Company:	BONANZA CREEK ENERGY INC.	TVD Reference:	KB-EST @ 4582.7usft
Project:	WELD COUNTY, COLORADO (NAD 83)	MD Reference:	KB-EST @ 4582.7usft
Site:	NW NW SEC. 26 T5N R63W 6th P.M.	North Reference:	True
Well:	STATE NORTH PLATTE A-E-26HNB	Survey Calculation Method:	Minimum Curvature
Wellbore:	ORIGINAL WELLBORE		
Design:	PROPOSAL #2		

Project	WELD COUNTY, COLORADO (NAD 83)		
Map System:	US State Plane 1983	System Datum:	Mean Sea Level
Geo Datum:	North American Datum 1983		
Map Zone:	Colorado Northern Zone		Using geodetic scale factor

Site	NW NW SEC. 26 T5N R63W 6th P.M.		
Site Position:		Northing:	1,381,571.48 usft
From:	Lat/Long	Easting:	3,304,115.19 usft
Position Uncertainty:	0.0 usft	Slot Radius:	1.10000ft
		Latitude:	40.375677
		Longitude:	-104.408429
		Grid Convergence:	0.71 °

Well	STATE NORTH PLATTE A-E-26HNB		
Well Position	+N-S	-81.7 usft	Northing: 1,381,491.23 usft
	+E-W	118.8 usft	Easting: 3,304,235.02 usft
Position Uncertainty	0.0 usft	Wellhead Elevation:	usft
		Latitude:	40.375453
		Longitude:	-104.408003
		Ground Level:	4,565.7 usft

Wellbore	ORIGINAL WELLBORE				
Magnetics	Model Name	Sample Date	Declination (°)	Dip Angle (°)	Field Strength (nT)
	IGRF2015	04/10/2016	8.09	66.91	52,499

Design	PROPOSAL #2			
Audit Notes:				
Version:	Phase:	PROTOTYPE	Tie On Depth:	0.0
Vertical Section:	Depth From (TVD) (usft)	+N-S (usft)	+E-W (usft)	Direction (°)
	0.0	0.0	0.0	197.74

Plan Sections											
MD (usft)	Inc (°)	Azi (°)	Vertical Depth	SS (usft)	+N-S (usft)	+E-W (usft)	Dogleg Rate (°/100usft)	Build Rate (°/100usft)	Turn Rate (°/100usft)	TFO (°)	Target
0.0	0.00	0.00	0.0	-4,582.7	0.0	0.0	0.00	0.00	0.00	0.00	
1,700.0	0.00	0.00	1,700.0	-2,882.7	0.0	0.0	0.00	0.00	0.00	0.00	
2,958.8	25.18	303.04	2,918.6	-1,664.1	148.4	-228.1	2.00	2.00	0.00	303.04	
4,822.9	25.18	303.04	4,605.8	23.1	580.7	-892.9	0.00	0.00	0.00	0.00	
6,081.7	0.00	0.00	5,824.4	1,241.7	729.1	-1,121.0	2.00	-2.00	0.00	180.00	
6,111.7	0.00	0.00	5,854.4	1,271.7	729.1	-1,121.0	0.00	0.00	0.00	0.00	KOP - STATE NOR
6,736.7	75.00	188.88	6,315.6	1,732.9	379.5	-1,175.6	12.00	12.00	0.00	188.88	
6,836.7	75.00	188.88	6,341.5	1,758.8	284.0	-1,190.5	0.00	0.00	0.00	0.00	
6,961.7	90.00	188.88	6,357.7	1,775.0	161.9	-1,209.6	12.00	12.00	0.00	0.00	
7,232.5	90.00	180.76	6,357.7	1,775.0	-107.7	-1,232.3	3.00	0.00	-3.00	-90.00	
11,138.2	90.00	180.76	6,357.7	1,775.0	-4,013.0	-1,283.9	0.00	0.00	0.00	0.00	BHL - STATE NOR

Database:	EDM 5000.1 Single User Db	Local Co-ordinate Reference:	Well STATE NORTH PLATTE A-E-26HNB
Company:	BONANZA CREEK ENERGY INC.	TVD Reference:	KB-EST @ 4582.7usft
Project:	WELD COUNTY, COLORADO (NAD 83)	MD Reference:	KB-EST @ 4582.7usft
Site:	NW NW SEC. 26 T5N R63W 6th P.M.	North Reference:	True
Well:	STATE NORTH PLATTE A-E-26HNB	Survey Calculation Method:	Minimum Curvature
Wellbore:	ORIGINAL WELLBORE		
Design:	PROPOSAL #2		

Planned Survey

MD (usft)	Inc (°)	Azi (°)	TVD (usft)	SS (usft)	+N/-S (usft)	+E/-W (usft)	Vertical Section (usft)	Dogleg Rate (°/100usft)	Build Rate (°/100usft)	Turn Rate (°/100usft)
SHL: 741ft FNL & 1241ft FWL of Sec 26										
0.0	0.00	0.00	0.0	4,582.70	0.0	0.0	0.0	0.00	0.00	0.00
100.0	0.00	0.00	100.0	4,482.70	0.0	0.0	0.0	0.00	0.00	0.00
200.0	0.00	0.00	200.0	4,382.70	0.0	0.0	0.0	0.00	0.00	0.00
300.0	0.00	0.00	300.0	4,282.70	0.0	0.0	0.0	0.00	0.00	0.00
400.0	0.00	0.00	400.0	4,182.70	0.0	0.0	0.0	0.00	0.00	0.00
500.0	0.00	0.00	500.0	4,082.70	0.0	0.0	0.0	0.00	0.00	0.00
600.0	0.00	0.00	600.0	3,982.70	0.0	0.0	0.0	0.00	0.00	0.00
700.0	0.00	0.00	700.0	3,882.70	0.0	0.0	0.0	0.00	0.00	0.00
800.0	0.00	0.00	800.0	3,782.70	0.0	0.0	0.0	0.00	0.00	0.00
900.0	0.00	0.00	900.0	3,682.70	0.0	0.0	0.0	0.00	0.00	0.00
1,000.0	0.00	0.00	1,000.0	3,582.70	0.0	0.0	0.0	0.00	0.00	0.00
1,100.0	0.00	0.00	1,100.0	3,482.70	0.0	0.0	0.0	0.00	0.00	0.00
1,200.0	0.00	0.00	1,200.0	3,382.70	0.0	0.0	0.0	0.00	0.00	0.00
1,300.0	0.00	0.00	1,300.0	3,282.70	0.0	0.0	0.0	0.00	0.00	0.00
1,400.0	0.00	0.00	1,400.0	3,182.70	0.0	0.0	0.0	0.00	0.00	0.00
1,500.0	0.00	0.00	1,500.0	3,082.70	0.0	0.0	0.0	0.00	0.00	0.00
1,600.0	0.00	0.00	1,600.0	2,982.70	0.0	0.0	0.0	0.00	0.00	0.00
START NUDGE (2°/100ft BUR)										
1,700.0	0.00	0.00	1,700.0	2,882.70	0.0	0.0	0.0	0.00	0.00	0.00
1,800.0	2.00	303.04	1,800.0	2,782.72	1.0	-1.5	-0.5	2.00	2.00	0.00
1,900.0	4.00	303.04	1,899.8	2,682.86	3.8	-5.8	-1.8	2.00	2.00	0.00
2,000.0	6.00	303.04	1,999.5	2,583.25	8.6	-13.2	-4.1	2.00	2.00	0.00
2,100.0	8.00	303.04	2,098.7	2,484.00	15.2	-23.4	-7.4	2.00	2.00	0.00
2,200.0	10.00	303.04	2,197.5	2,385.23	23.7	-36.5	-11.5	2.00	2.00	0.00
2,300.0	12.00	303.04	2,295.6	2,287.08	34.1	-52.5	-16.5	2.00	2.00	0.00
2,400.0	14.00	303.04	2,393.1	2,189.64	46.4	-71.3	-22.5	2.00	2.00	0.00
2,500.0	16.00	303.04	2,489.6	2,093.06	60.5	-93.0	-29.3	2.00	2.00	0.00
2,600.0	18.00	303.04	2,585.3	1,997.43	76.4	-117.5	-37.0	2.00	2.00	0.00
2,700.0	20.00	303.04	2,679.8	1,902.88	94.2	-144.8	-45.6	2.00	2.00	0.00
2,800.0	22.00	303.04	2,773.2	1,809.53	113.7	-174.9	-55.0	2.00	2.00	0.00
2,900.0	24.00	303.04	2,865.2	1,717.49	135.0	-207.6	-65.3	2.00	2.00	0.00
EOB TO 25.18° INC										
2,958.8	25.18	303.04	2,918.7	1,664.02	148.4	-228.1	-71.8	2.00	2.00	0.00
3,000.0	25.18	303.04	2,956.0	1,626.73	157.9	-242.8	-76.4	0.00	0.00	0.00
3,100.0	25.18	303.04	3,046.5	1,536.23	181.1	-278.5	-87.7	0.00	0.00	0.00
3,200.0	25.18	303.04	3,137.0	1,445.73	204.3	-314.1	-98.9	0.00	0.00	0.00
3,300.0	25.18	303.04	3,227.5	1,355.23	227.5	-349.8	-110.1	0.00	0.00	0.00
3,400.0	25.18	303.04	3,318.0	1,264.73	250.7	-385.5	-121.3	0.00	0.00	0.00
3,500.0	25.18	303.04	3,408.5	1,174.23	273.9	-421.1	-132.5	0.00	0.00	0.00
3,600.0	25.18	303.04	3,499.0	1,083.72	297.1	-456.8	-143.8	0.00	0.00	0.00
3,700.0	25.18	303.04	3,589.5	993.22	320.3	-492.4	-155.0	0.00	0.00	0.00
3,800.0	25.18	303.04	3,680.0	902.72	343.5	-528.1	-166.2	0.00	0.00	0.00
3,900.0	25.18	303.04	3,770.5	812.22	366.7	-563.8	-177.4	0.00	0.00	0.00
4,000.0	25.18	303.04	3,861.0	721.72	389.9	-599.4	-188.7	0.00	0.00	0.00
4,100.0	25.18	303.04	3,951.5	631.22	413.1	-635.1	-199.9	0.00	0.00	0.00
4,200.0	25.18	303.04	4,042.0	540.72	436.3	-670.7	-211.1	0.00	0.00	0.00
4,300.0	25.18	303.04	4,132.5	450.22	459.4	-706.4	-222.3	0.00	0.00	0.00
4,400.0	25.18	303.04	4,223.0	359.72	482.6	-742.1	-233.6	0.00	0.00	0.00
4,500.0	25.18	303.04	4,313.5	269.21	505.8	-777.7	-244.8	0.00	0.00	0.00
4,600.0	25.18	303.04	4,404.0	178.71	529.0	-813.4	-256.0	0.00	0.00	0.00
4,700.0	25.18	303.04	4,494.5	88.21	552.2	-849.0	-267.2	0.00	0.00	0.00
4,800.0	25.18	303.04	4,585.0	-2.29	575.4	-884.7	-278.5	0.00	0.00	0.00

Database:	EDM 5000.1 Single User Db	Local Co-ordinate Reference:	Well STATE NORTH PLATTE A-E-26HNB
Company:	BONANZA CREEK ENERGY INC.	TVD Reference:	KB-EST @ 4582.7usft
Project:	WELD COUNTY, COLORADO (NAD 83)	MD Reference:	KB-EST @ 4582.7usft
Site:	NW NW SEC. 26 T5N R63W 6th P.M.	North Reference:	True
Well:	STATE NORTH PLATTE A-E-26HNB	Survey Calculation Method:	Minimum Curvature
Wellbore:	ORIGINAL WELLBORE		
Design:	PROPOSAL #2		

Planned Survey

MD (usft)	Inc (°)	Azi (°)	TVD (usft)	SS (usft)	+N/-S (usft)	+E/-W (usft)	Vertical Section (usft)	Dogleg Rate (°/100usft)	Build Rate (°/100usft)	Turn Rate (°/100usft)
END OF TANGENT										
4,822.9	25.18	303.04	4,605.7	-23.01	580.7	-892.9	-281.0	0.00	0.00	0.00
4,900.0	23.63	303.04	4,675.9	-93.22	598.1	-919.6	-289.4	2.00	-2.00	0.00
5,000.0	21.63	303.04	4,768.2	-185.52	619.1	-951.8	-299.6	2.00	-2.00	0.00
5,100.0	19.63	303.04	4,861.8	-279.10	638.3	-981.4	-308.9	2.00	-2.00	0.00
5,200.0	17.63	303.04	4,956.5	-373.85	655.7	-1,008.2	-317.3	2.00	-2.00	0.00
5,300.0	15.63	303.04	5,052.4	-469.66	671.3	-1,032.1	-324.9	2.00	-2.00	0.00
5,400.0	13.63	303.04	5,149.1	-566.41	685.1	-1,053.3	-331.5	2.00	-2.00	0.00
5,500.0	11.63	303.04	5,246.7	-663.98	697.0	-1,071.7	-337.3	2.00	-2.00	0.00
5,600.0	9.63	303.04	5,345.0	-762.26	707.1	-1,087.1	-342.2	2.00	-2.00	0.00
5,700.0	7.63	303.04	5,443.8	-861.12	715.3	-1,099.7	-346.1	2.00	-2.00	0.00
5,800.0	5.63	303.04	5,543.1	-960.45	721.6	-1,109.4	-349.2	2.00	-2.00	0.00
5,900.0	3.63	303.04	5,642.8	-1,060.12	726.0	-1,116.2	-351.3	2.00	-2.00	0.00
6,000.0	1.63	303.04	5,742.7	-1,160.01	728.5	-1,120.0	-352.5	2.00	-2.00	0.00
EOD TO VERTICAL										
6,081.7	0.00	303.04	5,824.4	-1,241.69	729.1	-1,121.0	-352.8	2.00	-2.00	0.00
6,100.0	0.00	0.00	5,842.7	-1,259.99	729.1	-1,121.0	-352.8	0.00	0.00	0.00
KOP (12°/100ft BUR)										
6,111.7	0.00	0.00	5,854.4	-1,271.69	729.1	-1,121.0	-352.8	0.00	0.00	0.00
6,200.0	10.60	188.88	5,942.2	-1,359.49	721.1	-1,122.3	-344.8	12.00	12.00	0.00
6,300.0	22.60	188.88	6,037.9	-1,455.15	692.9	-1,126.7	-316.6	12.00	12.00	0.00
6,400.0	34.60	188.88	6,125.5	-1,542.79	645.7	-1,134.0	-269.4	12.00	12.00	0.00
6,500.0	46.60	188.88	6,201.3	-1,618.59	581.5	-1,144.1	-205.2	12.00	12.00	0.00
6,600.0	58.60	188.88	6,261.9	-1,679.22	503.2	-1,156.3	-126.9	12.00	12.00	0.00
6,700.0	70.60	188.88	6,304.7	-1,722.04	414.1	-1,170.2	-37.8	12.00	12.00	0.00
START OF TANGENT										
6,736.7	75.00	188.88	6,315.6	-1,732.89	379.5	-1,175.6	-3.2	12.00	12.00	0.00
6,800.0	75.00	188.88	6,332.0	-1,749.28	319.0	-1,185.1	57.2	0.00	0.00	0.00
END OF TANGENT										
6,836.7	75.00	188.88	6,341.5	-1,758.78	284.0	-1,190.5	92.3	0.00	0.00	0.00
6,900.0	82.60	188.88	6,353.8	-1,771.07	222.7	-1,200.1	153.6	12.00	12.00	0.00
HZ LP *NEW*: 589.2ft FNL & 28.2ft FEL of Sec 26										
6,961.7	90.00	188.88	6,357.7	-1,775.05	161.9	-1,209.6	214.4	12.00	12.00	0.00
7,000.0	90.00	187.73	6,357.7	-1,775.05	124.0	-1,215.1	252.2	3.00	0.00	-3.00
7,100.0	90.00	184.73	6,357.7	-1,775.05	24.6	-1,226.0	350.1	3.00	0.00	-3.00
7,200.0	90.00	181.73	6,357.7	-1,775.05	-75.2	-1,231.6	446.9	3.00	0.00	-3.00
EOT TO 180.76° AZ										
7,232.5	90.00	180.76	6,357.7	-1,775.05	-107.7	-1,232.3	478.1	3.00	0.00	-3.00
7,300.0	90.00	180.76	6,357.7	-1,775.04	-175.2	-1,233.2	542.6	0.00	0.00	0.00
7,400.0	90.00	180.76	6,357.7	-1,775.04	-275.2	-1,234.6	638.3	0.00	0.00	0.00
7,500.0	90.00	180.76	6,357.7	-1,775.04	-375.2	-1,235.9	733.9	0.00	0.00	0.00
7,600.0	90.00	180.76	6,357.7	-1,775.04	-475.2	-1,237.2	829.6	0.00	0.00	0.00
7,700.0	90.00	180.76	6,357.7	-1,775.04	-575.1	-1,238.5	925.2	0.00	0.00	0.00
7,800.0	90.00	180.76	6,357.7	-1,775.04	-675.1	-1,239.8	1,020.8	0.00	0.00	0.00
7,900.0	90.00	180.76	6,357.7	-1,775.04	-775.1	-1,241.2	1,116.5	0.00	0.00	0.00
8,000.0	90.00	180.76	6,357.7	-1,775.04	-875.1	-1,242.5	1,212.1	0.00	0.00	0.00
8,100.0	90.00	180.76	6,357.7	-1,775.04	-975.1	-1,243.8	1,307.8	0.00	0.00	0.00
8,200.0	90.00	180.76	6,357.7	-1,775.03	-1,075.1	-1,245.1	1,403.4	0.00	0.00	0.00
8,300.0	90.00	180.76	6,357.7	-1,775.03	-1,175.1	-1,246.4	1,499.0	0.00	0.00	0.00
8,400.0	90.00	180.76	6,357.7	-1,775.03	-1,275.1	-1,247.8	1,594.7	0.00	0.00	0.00
8,500.0	90.00	180.76	6,357.7	-1,775.03	-1,375.1	-1,249.1	1,690.3	0.00	0.00	0.00
8,600.0	90.00	180.76	6,357.7	-1,775.03	-1,475.1	-1,250.4	1,785.9	0.00	0.00	0.00
8,700.0	90.00	180.76	6,357.7	-1,775.03	-1,575.1	-1,251.7	1,881.6	0.00	0.00	0.00

Database:	EDM 5000.1 Single User Db	Local Co-ordinate Reference:	Well STATE NORTH PLATTE A-E-26HNB
Company:	BONANZA CREEK ENERGY INC.	TVD Reference:	KB-EST @ 4582.7usft
Project:	WELD COUNTY, COLORADO (NAD 83)	MD Reference:	KB-EST @ 4582.7usft
Site:	NW NW SEC. 26 T5N R63W 6th P.M.	North Reference:	True
Well:	STATE NORTH PLATTE A-E-26HNB	Survey Calculation Method:	Minimum Curvature
Wellbore:	ORIGINAL WELLBORE		
Design:	PROPOSAL #2		

Planned Survey

MD (usft)	Inc (°)	Azi (°)	TVD (usft)	SS (usft)	+N/-S (usft)	+E/-W (usft)	Vertical Section (usft)	Dogleg Rate (°/100usft)	Build Rate (°/100usft)	Turn Rate (°/100usft)
8,800.0	90.00	180.76	6,357.7	-1,775.03	-1,675.1	-1,253.0	1,977.2	0.00	0.00	0.00
8,900.0	90.00	180.76	6,357.7	-1,775.03	-1,775.0	-1,254.4	2,072.9	0.00	0.00	0.00
9,000.0	90.00	180.76	6,357.7	-1,775.02	-1,875.0	-1,255.7	2,168.5	0.00	0.00	0.00
9,100.0	90.00	180.76	6,357.7	-1,775.02	-1,975.0	-1,257.0	2,264.1	0.00	0.00	0.00
9,200.0	90.00	180.76	6,357.7	-1,775.02	-2,075.0	-1,258.3	2,359.8	0.00	0.00	0.00
9,300.0	90.00	180.76	6,357.7	-1,775.02	-2,175.0	-1,259.7	2,455.4	0.00	0.00	0.00
9,400.0	90.00	180.76	6,357.7	-1,775.02	-2,275.0	-1,261.0	2,551.1	0.00	0.00	0.00
9,500.0	90.00	180.76	6,357.7	-1,775.02	-2,375.0	-1,262.3	2,646.7	0.00	0.00	0.00
9,600.0	90.00	180.76	6,357.7	-1,775.02	-2,475.0	-1,263.6	2,742.3	0.00	0.00	0.00
9,700.0	90.00	180.76	6,357.7	-1,775.02	-2,575.0	-1,264.9	2,838.0	0.00	0.00	0.00
9,800.0	90.00	180.76	6,357.7	-1,775.02	-2,675.0	-1,266.3	2,933.6	0.00	0.00	0.00
9,900.0	90.00	180.76	6,357.7	-1,775.01	-2,775.0	-1,267.6	3,029.2	0.00	0.00	0.00
10,000.0	90.00	180.76	6,357.7	-1,775.01	-2,874.9	-1,268.9	3,124.9	0.00	0.00	0.00
10,100.0	90.00	180.76	6,357.7	-1,775.01	-2,974.9	-1,270.2	3,220.5	0.00	0.00	0.00
10,200.0	90.00	180.76	6,357.7	-1,775.01	-3,074.9	-1,271.5	3,316.2	0.00	0.00	0.00
10,300.0	90.00	180.76	6,357.7	-1,775.01	-3,174.9	-1,272.9	3,411.8	0.00	0.00	0.00
10,400.0	90.00	180.76	6,357.7	-1,775.01	-3,274.9	-1,274.2	3,507.4	0.00	0.00	0.00
10,500.0	90.00	180.76	6,357.7	-1,775.01	-3,374.9	-1,275.5	3,603.1	0.00	0.00	0.00
10,600.0	90.00	180.76	6,357.7	-1,775.01	-3,474.9	-1,276.8	3,698.7	0.00	0.00	0.00
10,700.0	90.00	180.76	6,357.7	-1,775.01	-3,574.9	-1,278.1	3,794.3	0.00	0.00	0.00
10,800.0	90.00	180.76	6,357.7	-1,775.00	-3,674.9	-1,279.5	3,890.0	0.00	0.00	0.00
10,900.0	90.00	180.76	6,357.7	-1,775.00	-3,774.9	-1,280.8	3,985.6	0.00	0.00	0.00
11,000.0	90.00	180.76	6,357.7	-1,775.00	-3,874.9	-1,282.1	4,081.3	0.00	0.00	0.00
11,100.0	90.00	180.76	6,357.7	-1,775.00	-3,974.9	-1,283.4	4,176.9	0.00	0.00	0.00
BHL: 470ft FSL & 10ft FWL of Sec 26										
11,138.2	90.00	180.76	6,357.7	-1,775.00	-4,013.0	-1,283.9	4,213.4	0.00	0.00	0.00

Plan Annotations

MD (usft)	TVD (usft)	Local Coordinates		Comment
		+N/-S (usft)	+E/-W (usft)	
0.0	0.0	0.0	0.0	SHL: 741ft FNL & 1241ft FWL of Sec 26
1,700.0	1,700.0	0.0	0.0	START NUDGE (2°/100ft BUR)
2,958.8	2,918.7	148.4	-228.1	EOB TO 25.18° INC
4,822.9	4,605.7	580.7	-892.9	END OF TANGENT
6,081.7	5,824.4	729.1	-1,121.0	EOD TO VERTICAL
6,111.7	5,854.4	729.1	-1,121.0	KOP (12°/100ft BUR)
6,736.7	6,315.6	379.5	-1,175.6	START OF TANGENT
6,836.7	6,341.5	284.0	-1,190.5	END OF TANGENT
6,961.7	6,357.7	161.9	-1,209.6	HZ LP *NEW*: 589.2ft FNL & 28.2ft FEL of Sec 26
7,232.5	6,357.7	-107.7	-1,232.3	EOT TO 180.76° AZ
11,138.2	6,357.7	-4,013.0	-1,283.9	BHL: 470ft FSL & 10ft FWL of Sec 26