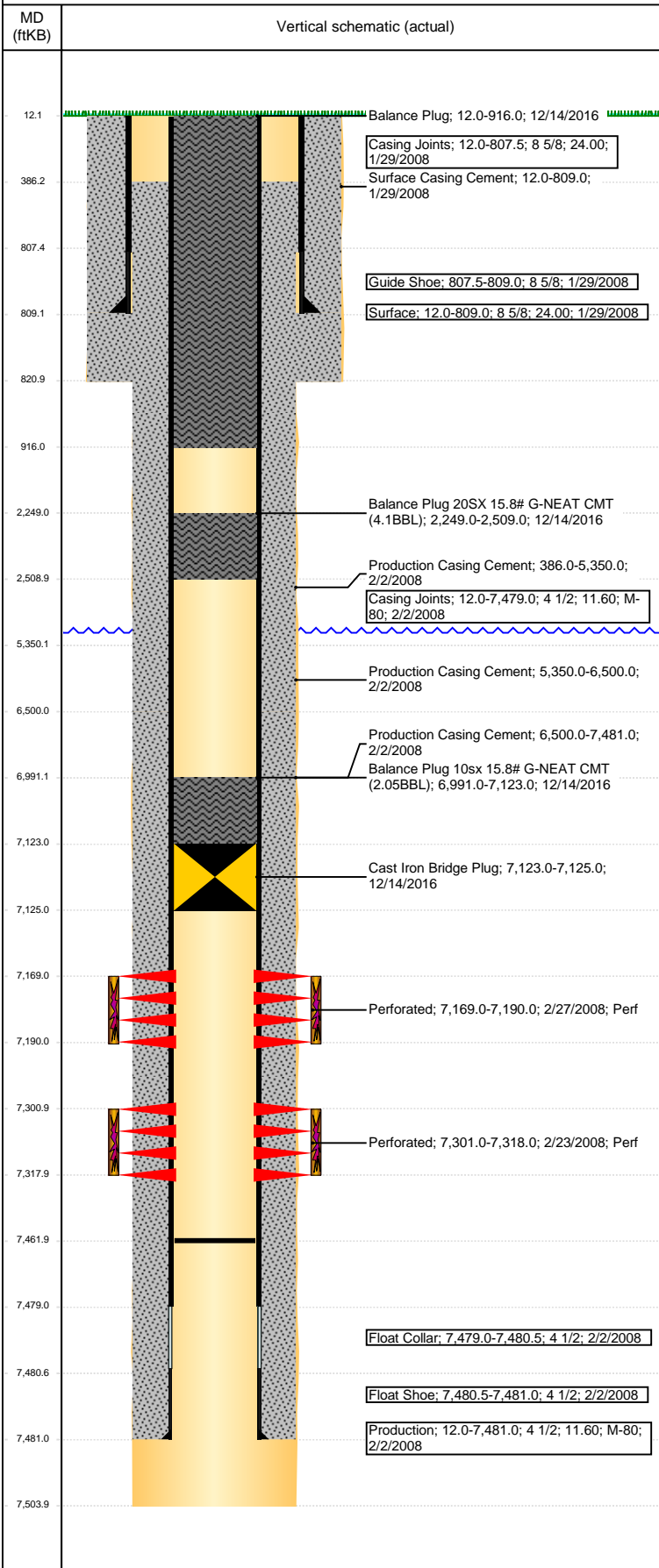


Well Name: HAYTHORN 4-12

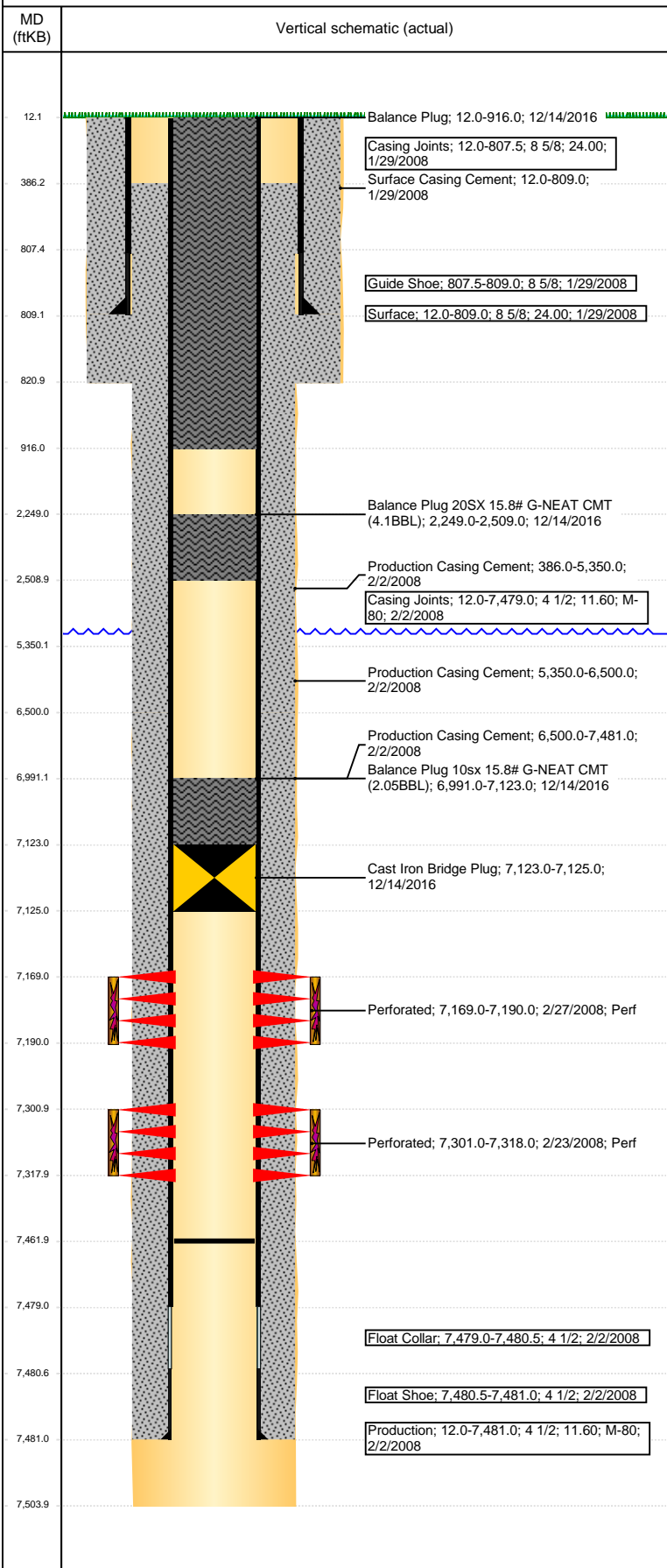
VERTICAL - ORIGINAL HOLE, 1/20/2017 10:13:23 AM



Well Header							
API	05-123-26669	Business Unit	DJ BASIN	District	15	Well Config	VERTICAL
Original KB Elevation (ft)	4,853	KB - GL / MSL (ftKB)	12.00	Spud Date	1/28/2008	P & A Date	12/15/2016
Comment							
DISCREPANCY ON P CSG SET DEPTH: CBL @ 7452, COMP RPT/DRL RPT 7481 USED THIS							
Directions To Well							
31 & 74, W 1/2, S 1/2, E 1/10, N 3/10 INTO							
Congressional Location							
Quarter 3	Quarter 4	Section	Township	Twnshp N/S Dir	Range	Range E/W Dir	
NW	NE	4	6	N	66	W	
Bottom Hole Location							
North-South Distance (ft)		From N or S Line		East-West Distance (ft)		From E or W Line	
Plug Back Total Depths							
Date	Depth (ftKB)	Method	Com				
2/20/2008	7,452.0	CASED HOLE LOG	DEPTH LOGGER ON CBL				
8/30/2008	7,462.0	TAG	C/O TO 7462 TO LAND TBG				
Wellbore Sections							
Section Des		Size (in)	Act Top, MD (ftKB)		Act Btm, MD (ftKB)		
SURFACE		12 1/4	12		821		
PRODUCTION		7 7/8	821		7,504		
Zone Statuses							
Zone Name	Status Date	Status	Fluid Type	Job	Prod Method		
CODELL	3/3/2008	PR	Oil	DRILLING/CO...			
CODELL	12/15/2016	P&A	Oil	ABANDON WE...			
NIOBRARA	3/3/2008	PR	Oil	DRILLING/CO...			
NIOBRARA	12/15/2016	P&A	Oil	ABANDON WE...			
Casing Strings							
Surface, 809.0ftKB							
Casing Description	Run Date	OD (in)	W/Len (L...)	Grade	Top, MD (ft...)	MD (ftKB)	
Surface	1/29/2008	8 5/8	24.00		12.0	809.0	
Production, 7,481.0ftKB							
Casing Description	Run Date	OD (in)	W/Len (L...)	Grade	Top, MD (ft...)	MD (ftKB)	
Production	2/2/2008	4 1/2	11.60	M-80	12.0	7,481.0	
Cement							
Description	Top Depth (ftKB)		Bottom Depth (ftKB)				
Surface Casing Cement	12.0		809.0				
Production Casing Cement	386.0		5,350.0				
Production Casing Cement	5,350.0		6,500.0				
Production Casing Cement	6,500.0		7,481.0				
Balance Plug 10sx 15.8# G-NEAT CMT (2.05BBL)	6,991.0		7,123.0				
Balance Plug 20SX 15.8# G-NEAT CMT (4.1BBL)	2,249.0		2,509.0				
Balance Plug	12.0		916.0				
Tubing Strings							
Tubing Description	Run Date	String...	ID (in)	Wt (lb/ft)	Grade	Len (ft) Set De...	
Tubing - Production	8/30/2008	2 3/8				7,264.00	
Other In Hole							
Run Date	Des		OD (in)	Top (ftKB)	Btm (ftKB)		
12/14/2016	Cast Iron Bridge Plug		3.99	7,123.0	7,125.0		
Logs							
Date	Type			Top, MD (ftKB)	Btm, MD (ftKB)		
2/1/2008	COMPENSATED DENSITY			3,650.0	7,490.0		
2/1/2008	INDUCTION			809.0	7,510.0		
2/20/2008	CBL/CCL/GR			386.0	7,452.0		
4/4/2016	GYRO			0.0	7,200.0		
Perforation Data							
Linked Zone	Bnch/St g	Entered Shot Total	Top (ftKB)	Btm (ftKB)	Date		
NIOBRARA, ORIGINAL HOLE	B	84	7,169.00	7,190.00	2/27/2008		
CODELL, ORIGINAL HOLE		68	7,301.00	7,318.00	2/23/2008		

Well Name: HAYTHORN 4-12

VERTICAL - ORIGINAL HOLE, 1/20/2017 10:13:25 AM



Stimulation Intervals

Start Date 2/27/2008	Primary Job Type DRILLING/COMPLETION - ORIGINAL
Technical Result	Tech Result Details
Comment	

Start Date 2/27/2008	Primary Job Type DRILLING/COMPLETION - ORIGINAL
Technical Result	Tech Result Details
Comment	