

# **BONANZA CREEK ENERGY INC.**

**WELD COUNTY, COLORADO (NAD 83)**

**SW SW SEC. 2 T5N R62W 6th P.M.**

**STATE ANTELOPE A-11-14XRLNB**

**ORIGINAL WELLBORE**

**29 August, 2016**

**Plan: PROPOSAL #1**





Project: WELD COUNTY, COLORADO (NAD 83)  
Site: SW SW SEC. 2 T5N R62W 6th P.M.  
Well: STATE ANTELOPE A-11-14XRLNB  
Wellbore: ORIGINAL WELLBORE  
Design: PROPOSAL #1

ANNOTATIONS										
TVD	MD	Inc	Azi	+N/-S	+E/-W	Vsect	Dep	Annotation		
0.0	0.0	0.00	0.00	0.0	0.0	0.0	0.0	SHL: 838ft FSL & 811ft FWL of Sec 2		
1550.0	1550.0	0.00	0.00	0.0	0.0	0.0	0.0	SURFACE CASING		
1650.0	1650.0	0.00	0.00	0.0	0.0	0.0	0.0	START NUDGE (2°/100ft BUR)		
2048.7	2050.0	8.00	270.00	0.0	-27.9	1.7	27.9	EOB TO 8° INC		
2765.1	2781.3	16.63	208.07	-92.8	-128.6	100.7	171.3	EOB & T TO 16.63° INC & 208.07° AZ		
3193.4	3241.4	25.83	208.07	-239.7	-206.9	252.2	337.7	EOB TO 25.83° INC		
4180.2	4337.7	25.83	208.07	-661.1	-431.6	686.9	815.3	END OF TANGENT		
5428.4	5629.2	0.00	0.00	-913.7	-566.3	947.4	1101.6	EOD TO VERTICAL		
5458.4	5659.2	0.00	0.00	-913.7	-566.3	947.4	1101.6	KOP (8°/100ft BUR)		
6150.2	6596.7	75.00	193.00	-1430.9	-685.7	1471.1	1632.4	START OF TANGENT		
6176.1	6696.7	75.00	193.00	-1525.0	-707.4	1566.4	1729.0	END OF TANGENT		
6200.5	6884.2	90.00	193.00	-1705.7	-749.1	1749.2	1914.3	HZ LP *NEW*: 827.8ft FNL & 60ft FWL of Sec 11		
6200.5	7319.7	90.00	179.93	-2137.4	-798.1	2183.2	2349.8	EOT TO 179.93° AZ		
6200.5	11402.9	90.00	179.93	-6220.6	-793.4	6258.1	6433.0	MID-LAT TGT: 0ft FNL & 10ft FWL of Sec 14		
6200.5	11438.9	90.00	178.85	-6256.7	-793.1	6294.1	6469.1	EOT TO 178.85° AZ		
6200.5	16276.0	90.00	178.85	-11092.8	-696.3	11114.6	11306.1	BHL: 470ft FSL & 10ft FWL of Sec 14		

PROPOSED LOCAL COORDINATES:

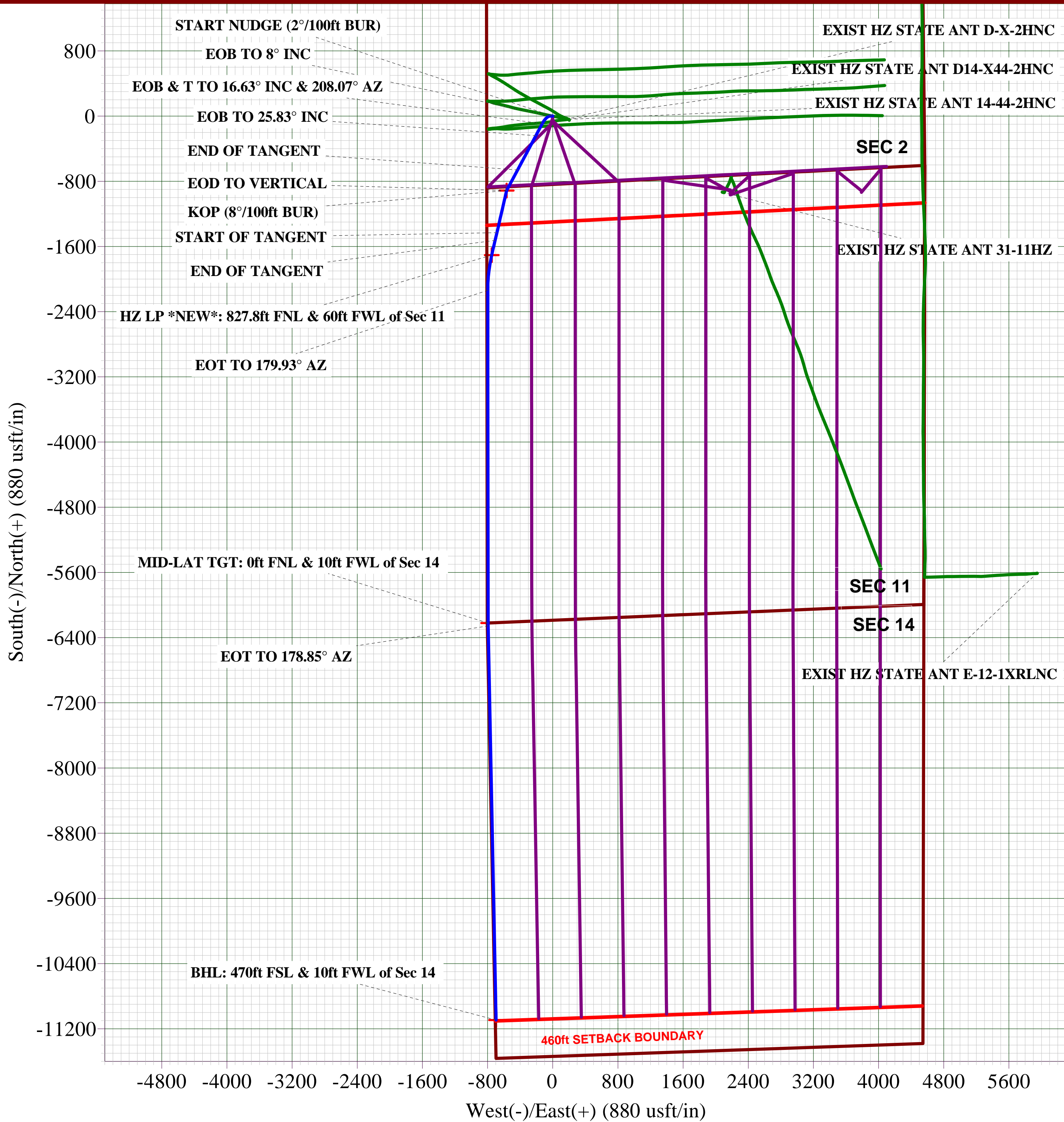
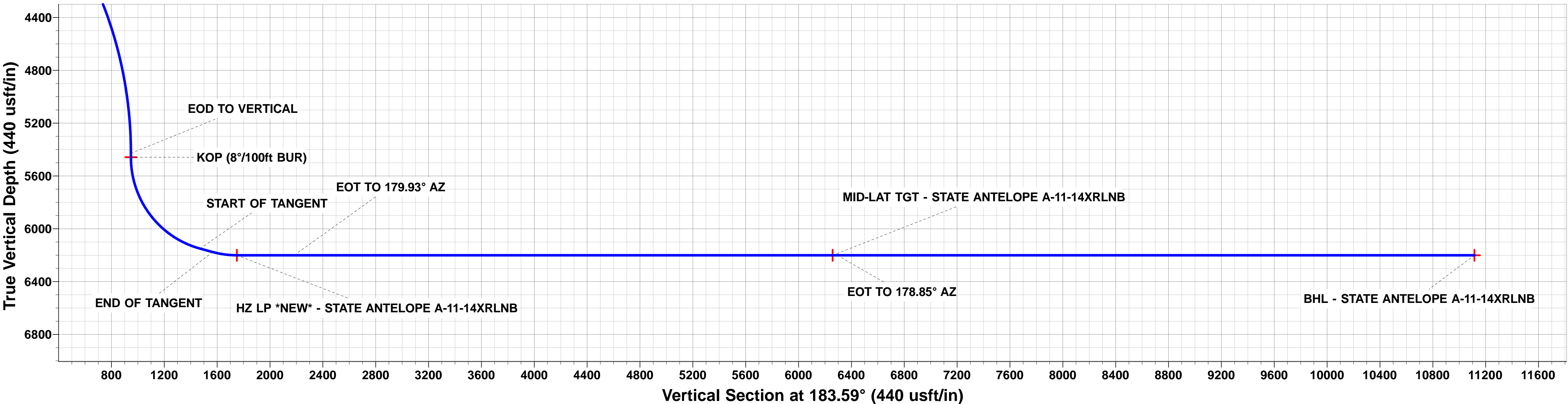
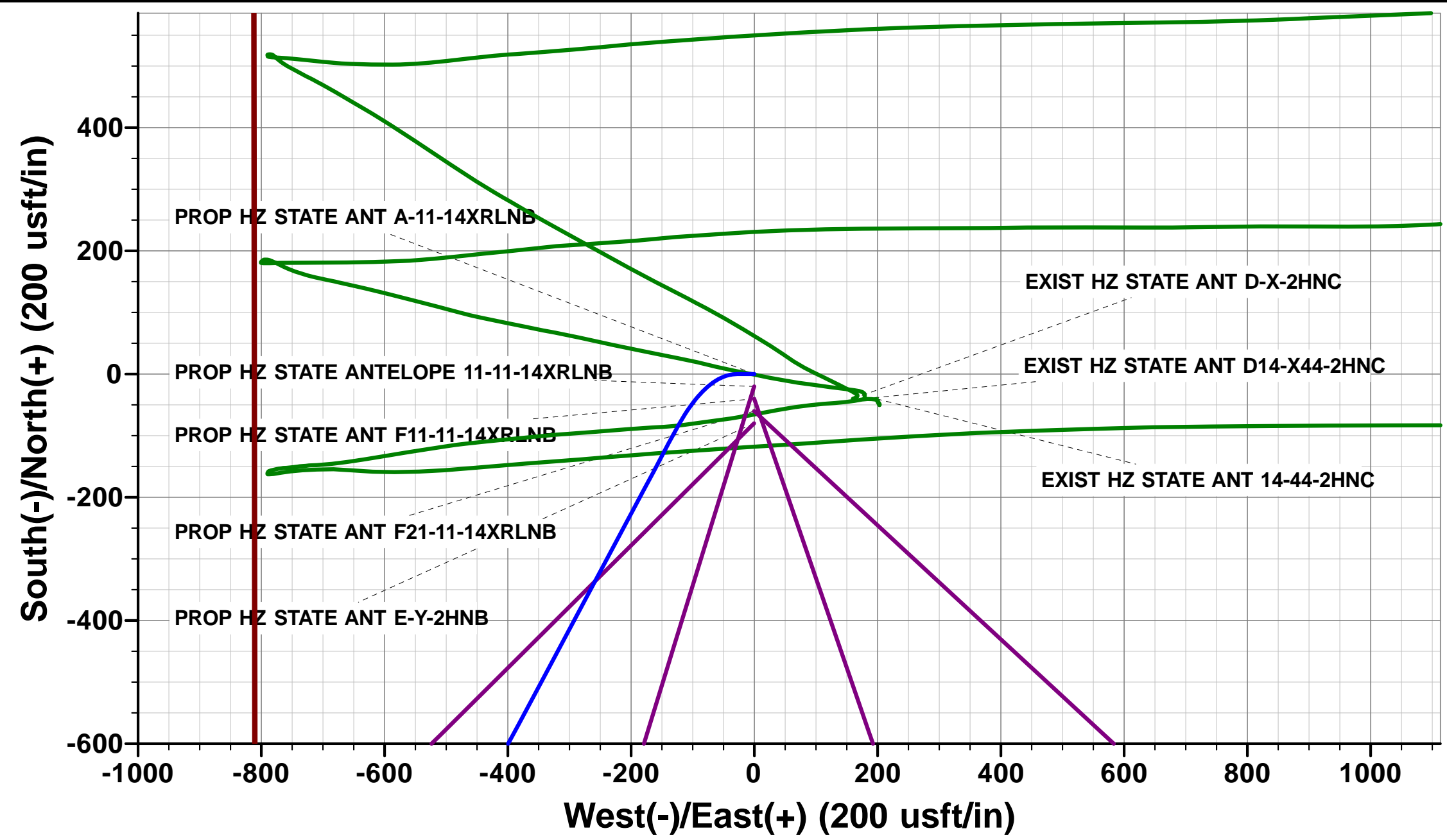
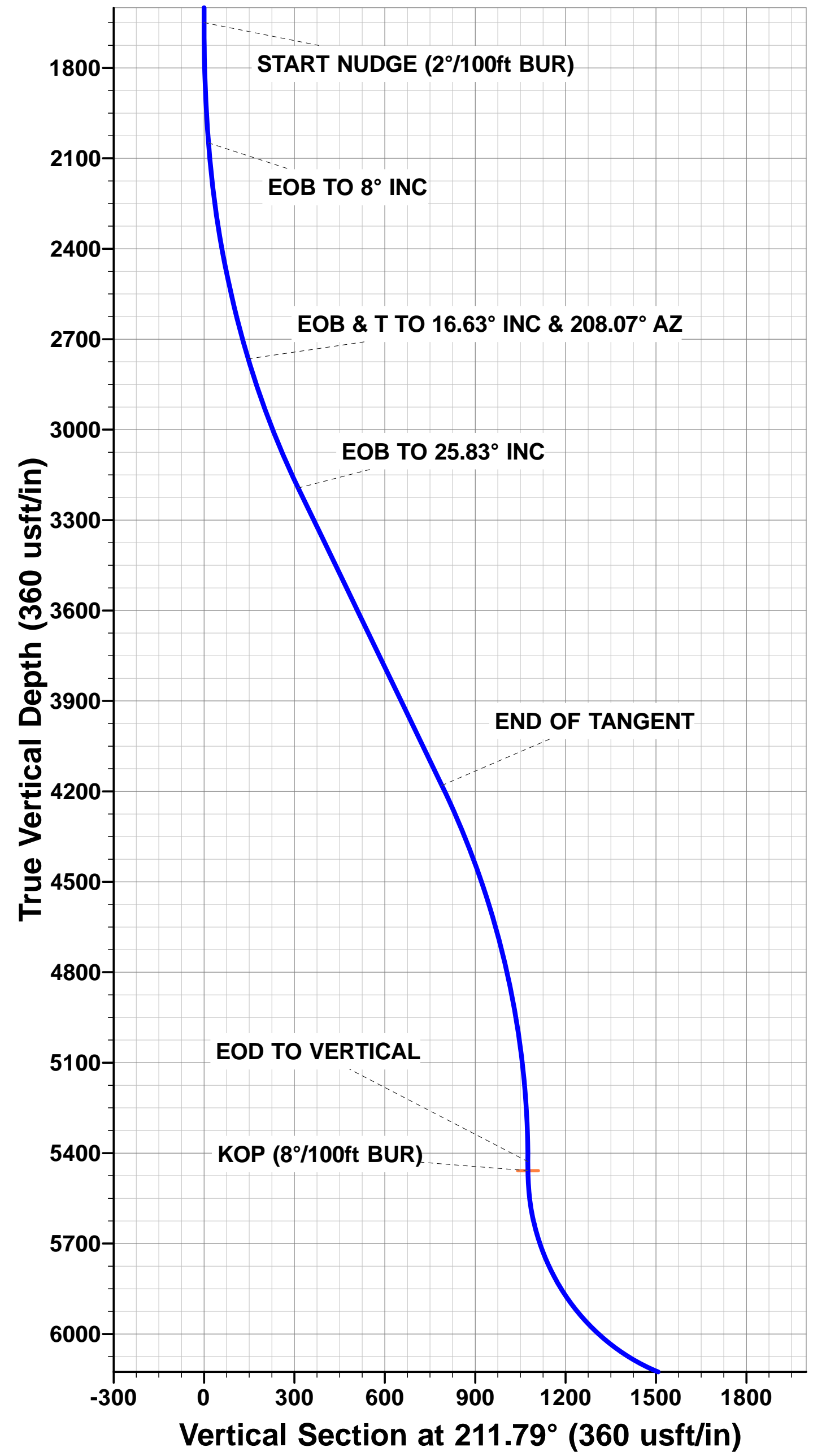
SHL: 838ft FSL & 811ft FWL Sec 2

HZ LP: 827.8ft FNL & 60ft FWL Sec 11

MID-LAT: 0ft FNL & 10ft FWL Sec 14

BHL: 470ft FSL & 10ft FWL Sec 14

WELLBORE TARGET DETAILS (LAT/LONG)					
Name	TVD	+N/-S	+E/-W	Latitude	Longitude
KOP - STATE ANTELOPE A-11-14XRLNB	5458.4	-913.7	-566.3	40.421869	-104.299143
BHL - STATE ANTELOPE A-11-14XRLNB	6200.5	-11092.8	-696.3	40.393928	-104.299609
HZ LP *NEW* - STATE ANTELOPE A-11-14XRLNB	6200.5	-1705.7	-749.1	40.419695	-104.299799
MID-LAT TGT - STATE ANTELOPE A-11-14XRLNB	6200.5	-6220.6	-793.4	40.407302	-104.299958



<b>Database:</b>	EDM 5000.1 Single User Db	<b>Local Co-ordinate Reference:</b>	Well STATE ANTELOPE A-11-14XRLNB
<b>Company:</b>	BONANZA CREEK ENERGY INC.	<b>TVD Reference:</b>	KB-EST @ 4640.5usft (Original Well Elev)
<b>Project:</b>	WELD COUNTY, COLORADO (NAD 83)	<b>MD Reference:</b>	KB-EST @ 4640.5usft (Original Well Elev)
<b>Site:</b>	SW SW SEC. 2 T5N R62W 6th P.M.	<b>North Reference:</b>	True
<b>Well:</b>	STATE ANTELOPE A-11-14XRLNB	<b>Survey Calculation Method:</b>	Minimum Curvature
<b>Wellbore:</b>	ORIGINAL WELLBORE		
<b>Design:</b>	PROPOSAL #1		

<b>Project</b>	WELD COUNTY, COLORADO (NAD 83)		
<b>Map System:</b>	US State Plane 1983	<b>System Datum:</b>	Mean Sea Level
<b>Geo Datum:</b>	North American Datum 1983		
<b>Map Zone:</b>	Colorado Northern Zone		Using geodetic scale factor

<b>Site</b>	SW SW SEC. 2 T5N R62W 6th P.M.		
<b>Site Position:</b>		<b>Northing:</b>	1,399,632.25 usft
<b>From:</b>	Lat/Long	<b>Easting:</b>	3,334,887.62 usft
<b>Position Uncertainty:</b>	0.0 usft	<b>Slot Radius:</b>	1.10000ft
		<b>Latitude:</b>	40.424157
		<b>Longitude:</b>	-104.297110
		<b>Grid Convergence:</b>	0.78 °

Well	STATE ANTELOPE A-11-14XRLNB					
Well Position	+N/-S	80.0 usft	Northing:	1,399,712.24 usft	Latitude:	40.424377
	+E/-W	0.4 usft	Easting:	3,334,886.89 usft	Longitude:	-104.297109
Position Uncertainty		0.0 usft	Wellhead Elevation:	usft	Ground Level:	4,623.5 usft

<b>Wellbore</b>	ORIGINAL WELLBORE				
<b>Magnetics</b>	<b>Model Name</b>	<b>Sample Date</b>	<b>Declination (°)</b>	<b>Dip Angle (°)</b>	<b>Field Strength (nT)</b>
	IGRF2015	29/08/2016	8.05	66.97	52,546

<b>Design</b>	PROPOSAL #1			
<b>Audit Notes:</b>				
<b>Version:</b>	<b>Phase:</b>	PROTOTYPE	<b>Tie On Depth:</b>	0.0
<b>Vertical Section:</b>	<b>Depth From (TVD) (usft)</b>	<b>+N/-S (usft)</b>	<b>+E/-W (usft)</b>	<b>Direction (°)</b>
	6,200.5	0.0	0.0	183.59

<b>Plan Sections</b>											
MD (usft)	Inc (°)	Azi (°)	Vertical Depth	SS (usft)	+N/-S (usft)	+E/-W (usft)	Dogleg Rate (°/100usf)	Build Rate (°/100usf)	Turn Rate (°/100usf)	TFO (°)	Target
0.0	0.00	0.00	0.0	-4,640.5	0.0	0.0	0.00	0.00	0.00	0.00	
1,650.0	0.00	0.00	1,650.0	-2,990.5	0.0	0.0	0.00	0.00	0.00	0.00	
2,050.0	8.00	270.00	2,048.7	-2,591.8	0.0	-27.9	2.00	2.00	0.00	270.00	
2,781.3	16.63	208.07	2,765.1	-1,875.4	-92.8	-128.6	2.00	1.18	-8.47	270.00	
3,241.4	25.83	208.07	3,193.4	-1,447.1	-239.7	-206.9	2.00	2.00	0.00	0.00	
4,337.7	25.83	208.07	4,180.2	-460.3	-661.1	-431.6	0.00	0.00	0.00	0.00	
5,629.2	0.00	0.00	5,428.4	787.9	-913.7	-566.3	2.00	-2.00	0.00	180.00	
5,659.2	0.00	0.00	5,458.4	817.9	-913.7	-566.3	0.00	0.00	0.00	0.00	
6,596.7	75.00	193.00	6,150.2	1,509.7	-1,430.9	-685.7	8.00	8.00	0.00	193.00	
6,696.7	75.00	193.00	6,176.1	1,535.6	-1,525.0	-707.4	0.00	0.00	0.00	0.00	
6,884.2	90.00	193.00	6,200.5	1,560.0	-1,705.7	-749.1	8.00	8.00	0.00	0.00	
7,319.7	90.00	179.93	6,200.5	1,560.0	-2,137.4	-798.1	3.00	0.00	-3.00	-90.00	
11,402.9	90.00	179.93	6,200.5	1,560.0	-6,220.6	-793.4	0.00	0.00	0.00	0.00	MID-LAT TGT - ST/
11,438.9	90.00	178.85	6,200.5	1,560.0	-6,256.7	-793.1	3.00	0.00	-3.00	-89.99	
16,276.0	90.00	178.85	6,200.5	1,560.0	-11,092.8	-696.3	0.00	0.00	0.00	0.00	BHL - STATE ANTE

<b>Database:</b>	EDM 5000.1 Single User Db	<b>Local Co-ordinate Reference:</b>	Well STATE ANTELOPE A-11-14XRLNB
<b>Company:</b>	BONANZA CREEK ENERGY INC.	<b>TVD Reference:</b>	KB-EST @ 4640.5usft (Original Well Elev)
<b>Project:</b>	WELD COUNTY, COLORADO (NAD 83)	<b>MD Reference:</b>	KB-EST @ 4640.5usft (Original Well Elev)
<b>Site:</b>	SW SW SEC. 2 T5N R62W 6th P.M.	<b>North Reference:</b>	True
<b>Well:</b>	STATE ANTELOPE A-11-14XRLNB	<b>Survey Calculation Method:</b>	Minimum Curvature
<b>Wellbore:</b>	ORIGINAL WELLBORE		
<b>Design:</b>	PROPOSAL #1		

## Planned Survey

MD (usft)	Inc (°)	Azi (°)	TVD (usft)	SS (usft)	+N/-S (usft)	+E/-W (usft)	Vertical Section (usft)	Dogleg Rate (°/100usft)	Build Rate (°/100usft)	Turn Rate (°/100usft)
<b>SHL: 838ft FSL &amp; 811ft FWL of Sec 2</b>										
0.0	0.00	0.00	0.0	4,640.50	0.0	0.0	0.0	0.00	0.00	0.00
100.0	0.00	0.00	100.0	4,540.50	0.0	0.0	0.0	0.00	0.00	0.00
200.0	0.00	0.00	200.0	4,440.50	0.0	0.0	0.0	0.00	0.00	0.00
300.0	0.00	0.00	300.0	4,340.50	0.0	0.0	0.0	0.00	0.00	0.00
400.0	0.00	0.00	400.0	4,240.50	0.0	0.0	0.0	0.00	0.00	0.00
500.0	0.00	0.00	500.0	4,140.50	0.0	0.0	0.0	0.00	0.00	0.00
600.0	0.00	0.00	600.0	4,040.50	0.0	0.0	0.0	0.00	0.00	0.00
700.0	0.00	0.00	700.0	3,940.50	0.0	0.0	0.0	0.00	0.00	0.00
800.0	0.00	0.00	800.0	3,840.50	0.0	0.0	0.0	0.00	0.00	0.00
900.0	0.00	0.00	900.0	3,740.50	0.0	0.0	0.0	0.00	0.00	0.00
1,000.0	0.00	0.00	1,000.0	3,640.50	0.0	0.0	0.0	0.00	0.00	0.00
1,100.0	0.00	0.00	1,100.0	3,540.50	0.0	0.0	0.0	0.00	0.00	0.00
1,200.0	0.00	0.00	1,200.0	3,440.50	0.0	0.0	0.0	0.00	0.00	0.00
1,300.0	0.00	0.00	1,300.0	3,340.50	0.0	0.0	0.0	0.00	0.00	0.00
1,400.0	0.00	0.00	1,400.0	3,240.50	0.0	0.0	0.0	0.00	0.00	0.00
1,500.0	0.00	0.00	1,500.0	3,140.50	0.0	0.0	0.0	0.00	0.00	0.00
<b>SURFACE CASING</b>										
1,550.0	0.00	0.00	1,550.0	3,090.50	0.0	0.0	0.0	0.00	0.00	0.00
1,600.0	0.00	0.00	1,600.0	3,040.50	0.0	0.0	0.0	0.00	0.00	0.00
<b>START NUDGE (2°/100ft BUR)</b>										
1,650.0	0.00	0.00	1,650.0	2,990.50	0.0	0.0	0.0	0.00	0.00	0.00
1,700.0	1.00	270.00	1,700.0	2,940.50	0.0	-0.4	0.0	2.00	2.00	0.00
1,800.0	3.00	270.00	1,799.9	2,840.57	0.0	-3.9	0.2	2.00	2.00	0.00
1,900.0	5.00	270.00	1,899.7	2,740.82	0.0	-10.9	0.7	2.00	2.00	0.00
2,000.0	7.00	270.00	1,999.1	2,641.37	0.0	-21.4	1.3	2.00	2.00	0.00
<b>EOB TO 8° INC</b>										
2,050.0	8.00	270.00	2,048.7	2,591.80	0.0	-27.9	1.7	2.00	2.00	0.00
2,100.0	8.06	262.85	2,098.2	2,542.29	-0.4	-34.8	2.6	2.00	0.12	-14.30
2,200.0	8.54	249.37	2,197.2	2,443.33	-3.9	-48.7	7.0	2.00	0.48	-13.49
2,300.0	9.43	237.85	2,296.0	2,344.55	-10.9	-62.6	14.8	2.00	0.88	-11.52
2,400.0	10.62	228.58	2,394.4	2,246.07	-21.4	-76.5	26.1	2.00	1.19	-9.27
2,500.0	12.02	221.31	2,492.5	2,148.01	-35.3	-90.3	40.9	2.00	1.40	-7.27
2,600.0	13.57	215.60	2,590.0	2,050.49	-52.6	-104.0	59.0	2.00	1.55	-5.70
2,700.0	15.23	211.08	2,686.9	1,953.63	-73.4	-117.6	80.6	2.00	1.66	-4.52
<b>EOB &amp; T TO 16.63° INC &amp; 208.07° AZ</b>										
2,781.3	16.63	208.07	2,765.1	1,875.42	-92.8	-128.6	100.7	2.00	1.72	-3.70
2,800.0	17.00	208.07	2,782.9	1,857.55	-97.6	-131.1	105.6	2.00	2.00	0.00
2,900.0	19.00	208.07	2,878.0	1,762.46	-124.9	-145.6	133.8	2.00	2.00	0.00
3,000.0	21.00	208.07	2,972.0	1,668.49	-155.1	-161.7	164.9	2.00	2.00	0.00
3,100.0	23.00	208.07	3,064.7	1,575.78	-188.1	-179.4	199.0	2.00	2.00	0.00
3,200.0	25.00	208.07	3,156.1	1,484.43	-224.0	-198.5	236.0	2.00	2.00	0.00
<b>EOB TO 25.83° INC</b>										
3,241.4	25.83	208.07	3,193.4	1,447.08	-239.7	-206.9	252.2	2.00	2.00	0.00
3,300.0	25.83	208.07	3,246.2	1,394.29	-262.2	-218.9	275.4	0.00	0.00	0.00
3,400.0	25.83	208.07	3,336.2	1,304.29	-300.7	-239.4	315.1	0.00	0.00	0.00
3,500.0	25.83	208.07	3,426.2	1,214.28	-339.1	-259.9	354.7	0.00	0.00	0.00
3,600.0	25.83	208.07	3,516.2	1,124.27	-377.6	-280.4	394.4	0.00	0.00	0.00
3,700.0	25.83	208.07	3,606.2	1,034.26	-416.0	-300.9	434.0	0.00	0.00	0.00
3,800.0	25.83	208.07	3,696.3	944.25	-454.4	-321.4	473.7	0.00	0.00	0.00
3,900.0	25.83	208.07	3,786.3	854.24	-492.9	-341.9	513.3	0.00	0.00	0.00
4,000.0	25.83	208.07	3,876.3	764.23	-531.3	-362.4	553.0	0.00	0.00	0.00
4,100.0	25.83	208.07	3,966.3	674.22	-569.8	-382.9	592.6	0.00	0.00	0.00



<b>Database:</b>	EDM 5000.1 Single User Db	<b>Local Co-ordinate Reference:</b>	Well STATE ANTELOPE A-11-14XRLNB
<b>Company:</b>	BONANZA CREEK ENERGY INC.	<b>TVD Reference:</b>	KB-EST @ 4640.5usft (Original Well Elev)
<b>Project:</b>	WELD COUNTY, COLORADO (NAD 83)	<b>MD Reference:</b>	KB-EST @ 4640.5usft (Original Well Elev)
<b>Site:</b>	SW SW SEC. 2 T5N R62W 6th P.M.	<b>North Reference:</b>	True
<b>Well:</b>	STATE ANTELOPE A-11-14XRLNB	<b>Survey Calculation Method:</b>	Minimum Curvature
<b>Wellbore:</b>	ORIGINAL WELLBORE		
<b>Design:</b>	PROPOSAL #1		

## Planned Survey

MD (usft)	Inc (°)	Azi (°)	TVD (usft)	SS (usft)	+N/-S (usft)	+E/-W (usft)	Vertical Section (usft)	Dogleg Rate (°/100usft)	Build Rate (°/100usft)	Turn Rate (°/100usft)
4,200.0	25.83	208.07	4,056.3	584.21	-608.2	-403.4	632.3	0.00	0.00	0.00
4,300.0	25.83	208.07	4,146.3	494.20	-646.7	-423.9	672.0	0.00	0.00	0.00
<b>END OF TANGENT</b>										
<b>4,337.7</b>	<b>25.83</b>	<b>208.07</b>	<b>4,180.2</b>	<b>460.31</b>	<b>-661.1</b>	<b>-431.6</b>	<b>686.9</b>	<b>0.00</b>	<b>0.00</b>	<b>0.00</b>
4,400.0	24.58	208.07	4,236.6	403.90	-684.6	-444.1	711.0	2.00	-2.00	0.00
4,500.0	22.58	208.07	4,328.2	312.26	-719.9	-462.9	747.5	2.00	-2.00	0.00
4,600.0	20.58	208.07	4,421.2	219.28	-752.3	-480.2	780.9	2.00	-2.00	0.00
4,700.0	18.58	208.07	4,515.4	125.07	-781.9	-496.0	811.4	2.00	-2.00	0.00
4,800.0	16.58	208.07	4,610.8	29.74	-808.6	-510.2	838.9	2.00	-2.00	0.00
4,900.0	14.58	208.07	4,707.1	-66.58	-832.3	-522.9	863.4	2.00	-2.00	0.00
5,000.0	12.58	208.07	4,804.3	-163.77	-853.0	-533.9	884.8	2.00	-2.00	0.00
5,100.0	10.58	208.07	4,902.2	-261.73	-870.7	-543.4	903.0	2.00	-2.00	0.00
5,200.0	8.58	208.07	5,000.8	-360.33	-885.4	-551.2	918.2	2.00	-2.00	0.00
5,300.0	6.58	208.07	5,100.0	-459.45	-897.0	-557.4	930.2	2.00	-2.00	0.00
5,400.0	4.58	208.07	5,199.5	-558.97	-905.6	-562.0	939.0	2.00	-2.00	0.00
5,500.0	2.58	208.07	5,299.3	-658.77	-911.1	-564.9	944.7	2.00	-2.00	0.00
5,600.0	0.58	208.07	5,399.2	-758.73	-913.6	-566.2	947.2	2.00	-2.00	0.00
<b>EOD TO VERTICAL</b>										
<b>5,629.2</b>	<b>0.00</b>	<b>0.00</b>	<b>5,428.4</b>	<b>-787.89</b>	<b>-913.7</b>	<b>-566.3</b>	<b>947.4</b>	<b>2.00</b>	<b>-2.00</b>	<b>0.00</b>
<b>KOP (8°/100ft BUR)</b>										
<b>5,659.2</b>	<b>0.00</b>	<b>0.00</b>	<b>5,458.4</b>	<b>-817.90</b>	<b>-913.7</b>	<b>-566.3</b>	<b>947.4</b>	<b>0.00</b>	<b>0.00</b>	<b>0.00</b>
5,700.0	3.27	193.00	5,499.2	-858.71	-914.8	-566.6	948.5	8.00	8.00	0.00
5,800.0	11.27	193.00	5,598.3	-957.82	-927.1	-569.4	961.0	8.00	8.00	0.00
5,900.0	19.27	193.00	5,694.7	-1,054.22	-952.8	-575.3	986.9	8.00	8.00	0.00
6,000.0	27.27	193.00	5,786.5	-1,146.01	-991.2	-584.2	1,025.9	8.00	8.00	0.00
6,100.0	35.27	193.00	5,871.9	-1,231.42	-1,041.8	-595.9	1,077.0	8.00	8.00	0.00
6,200.0	43.27	193.00	5,949.3	-1,308.77	-1,103.4	-610.1	1,139.4	8.00	8.00	0.00
6,300.0	51.27	193.00	6,017.1	-1,376.58	-1,174.9	-626.6	1,211.8	8.00	8.00	0.00
6,400.0	59.27	193.00	6,074.0	-1,433.51	-1,254.9	-645.1	1,292.9	8.00	8.00	0.00
6,500.0	67.27	193.00	6,119.0	-1,478.46	-1,341.9	-665.2	1,380.9	8.00	8.00	0.00
<b>START OF TANGENT</b>										
<b>6,596.7</b>	<b>75.00</b>	<b>193.00</b>	<b>6,150.2</b>	<b>-1,509.69</b>	<b>-1,430.9</b>	<b>-685.7</b>	<b>1,471.1</b>	<b>8.00</b>	<b>8.00</b>	<b>0.00</b>
6,600.0	75.00	193.00	6,151.1	-1,510.56	-1,434.1	-686.4	1,474.2	0.00	0.00	0.00
<b>END OF TANGENT</b>										
<b>6,696.7</b>	<b>75.00</b>	<b>193.00</b>	<b>6,176.1</b>	<b>-1,535.58</b>	<b>-1,525.0</b>	<b>-707.4</b>	<b>1,566.4</b>	<b>0.00</b>	<b>0.00</b>	<b>0.00</b>
6,700.0	75.27	193.00	6,176.9	-1,536.43	-1,528.2	-708.2	1,569.5	8.00	8.00	0.00
6,800.0	83.27	193.00	6,195.5	-1,555.04	-1,623.8	-730.2	1,666.4	8.00	8.00	0.00
<b>HZ LP *NEW*: 827.8ft FNL &amp; 60ft FWL of Sec 11</b>										
<b>6,884.2</b>	<b>90.00</b>	<b>193.00</b>	<b>6,200.5</b>	<b>-1,559.98</b>	<b>-1,705.7</b>	<b>-749.1</b>	<b>1,749.2</b>	<b>8.00</b>	<b>8.00</b>	<b>0.00</b>
6,900.0	90.00	192.53	6,200.5	-1,559.98	-1,721.1	-752.6	1,764.9	3.00	0.00	-3.00
7,000.0	90.00	189.53	6,200.5	-1,559.98	-1,819.2	-771.8	1,864.0	3.00	0.00	-3.00
7,100.0	90.00	186.53	6,200.5	-1,559.98	-1,918.2	-785.7	1,963.7	3.00	0.00	-3.00
7,200.0	90.00	183.53	6,200.5	-1,559.98	-2,017.8	-794.5	2,063.7	3.00	0.00	-3.00
7,300.0	90.00	180.53	6,200.5	-1,559.98	-2,117.8	-798.0	2,163.6	3.00	0.00	-3.00
<b>EOT TO 179.93° AZ</b>										
<b>7,319.7</b>	<b>90.00</b>	<b>179.93</b>	<b>6,200.5</b>	<b>-1,559.98</b>	<b>-2,137.4</b>	<b>-798.1</b>	<b>2,183.2</b>	<b>3.00</b>	<b>0.00</b>	<b>-3.00</b>
7,400.0	90.00	179.93	6,200.5	-1,559.98	-2,217.8	-798.0	2,263.4	0.00	0.00	0.00
7,500.0	90.00	179.93	6,200.5	-1,559.98	-2,317.8	-797.9	2,363.2	0.00	0.00	0.00
7,600.0	90.00	179.93	6,200.5	-1,559.98	-2,417.8	-797.8	2,463.0	0.00	0.00	0.00
7,700.0	90.00	179.93	6,200.5	-1,559.98	-2,517.8	-797.7	2,562.8	0.00	0.00	0.00
7,800.0	90.00	179.93	6,200.5	-1,559.98	-2,617.8	-797.5	2,662.6	0.00	0.00	0.00
7,900.0	90.00	179.93	6,200.5	-1,559.98	-2,717.8	-797.4	2,762.4	0.00	0.00	0.00
8,000.0	90.00	179.93	6,200.5	-1,559.98	-2,817.8	-797.3	2,862.2	0.00	0.00	0.00

<b>Database:</b>	EDM 5000.1 Single User Db	<b>Local Co-ordinate Reference:</b>	Well STATE ANTELOPE A-11-14XRLNB
<b>Company:</b>	BONANZA CREEK ENERGY INC.	<b>TVD Reference:</b>	KB-EST @ 4640.5usft (Original Well Elev)
<b>Project:</b>	WELD COUNTY, COLORADO (NAD 83)	<b>MD Reference:</b>	KB-EST @ 4640.5usft (Original Well Elev)
<b>Site:</b>	SW SW SEC. 2 T5N R62W 6th P.M.	<b>North Reference:</b>	True
<b>Well:</b>	STATE ANTELOPE A-11-14XRLNB	<b>Survey Calculation Method:</b>	Minimum Curvature
<b>Wellbore:</b>	ORIGINAL WELLBORE		
<b>Design:</b>	PROPOSAL #1		

Planned Survey										
MD (usft)	Inc (°)	Azi (°)	TVD (usft)	SS (usft)	+N/-S (usft)	+E/-W (usft)	Vertical Section (usft)	Dogleg Rate (°/100usft)	Build Rate (°/100usft)	Turn Rate (°/100usft)
8,100.0	90.00	179.93	6,200.5	-1,559.98	-2,917.8	-797.2	2,962.0	0.00	0.00	0.00
8,200.0	90.00	179.93	6,200.5	-1,559.98	-3,017.8	-797.1	3,061.8	0.00	0.00	0.00
8,300.0	90.00	179.93	6,200.5	-1,559.98	-3,117.8	-797.0	3,161.6	0.00	0.00	0.00
8,400.0	90.00	179.93	6,200.5	-1,559.99	-3,217.8	-796.9	3,261.4	0.00	0.00	0.00
8,500.0	90.00	179.93	6,200.5	-1,559.99	-3,317.8	-796.7	3,361.2	0.00	0.00	0.00
8,600.0	90.00	179.93	6,200.5	-1,559.99	-3,417.8	-796.6	3,461.0	0.00	0.00	0.00
8,700.0	90.00	179.93	6,200.5	-1,559.99	-3,517.8	-796.5	3,560.8	0.00	0.00	0.00
8,800.0	90.00	179.93	6,200.5	-1,559.99	-3,617.8	-796.4	3,660.6	0.00	0.00	0.00
8,900.0	90.00	179.93	6,200.5	-1,559.99	-3,717.8	-796.3	3,760.4	0.00	0.00	0.00
9,000.0	90.00	179.93	6,200.5	-1,559.99	-3,817.8	-796.2	3,860.2	0.00	0.00	0.00
9,100.0	90.00	179.93	6,200.5	-1,559.99	-3,917.8	-796.1	3,959.9	0.00	0.00	0.00
9,200.0	90.00	179.93	6,200.5	-1,559.99	-4,017.8	-796.0	4,059.7	0.00	0.00	0.00
9,300.0	90.00	179.93	6,200.5	-1,559.99	-4,117.8	-795.8	4,159.5	0.00	0.00	0.00
9,400.0	90.00	179.93	6,200.5	-1,559.99	-4,217.8	-795.7	4,259.3	0.00	0.00	0.00
9,500.0	90.00	179.93	6,200.5	-1,559.99	-4,317.8	-795.6	4,359.1	0.00	0.00	0.00
9,600.0	90.00	179.93	6,200.5	-1,559.99	-4,417.8	-795.5	4,458.9	0.00	0.00	0.00
9,700.0	90.00	179.93	6,200.5	-1,559.99	-4,517.8	-795.4	4,558.7	0.00	0.00	0.00
9,800.0	90.00	179.93	6,200.5	-1,559.99	-4,617.8	-795.3	4,658.5	0.00	0.00	0.00
9,900.0	90.00	179.93	6,200.5	-1,559.99	-4,717.8	-795.2	4,758.3	0.00	0.00	0.00
10,000.0	90.00	179.93	6,200.5	-1,559.99	-4,817.8	-795.0	4,858.1	0.00	0.00	0.00
10,100.0	90.00	179.93	6,200.5	-1,559.99	-4,917.8	-794.9	4,957.9	0.00	0.00	0.00
10,200.0	90.00	179.93	6,200.5	-1,559.99	-5,017.8	-794.8	5,057.7	0.00	0.00	0.00
10,300.0	90.00	179.93	6,200.5	-1,559.99	-5,117.8	-794.7	5,157.5	0.00	0.00	0.00
10,400.0	90.00	179.93	6,200.5	-1,560.00	-5,217.8	-794.6	5,257.3	0.00	0.00	0.00
10,500.0	90.00	179.93	6,200.5	-1,560.00	-5,317.8	-794.5	5,357.1	0.00	0.00	0.00
10,600.0	90.00	179.93	6,200.5	-1,560.00	-5,417.8	-794.4	5,456.9	0.00	0.00	0.00
10,700.0	90.00	179.93	6,200.5	-1,560.00	-5,517.8	-794.2	5,556.7	0.00	0.00	0.00
10,800.0	90.00	179.93	6,200.5	-1,560.00	-5,617.8	-794.1	5,656.5	0.00	0.00	0.00
10,900.0	90.00	179.93	6,200.5	-1,560.00	-5,717.8	-794.0	5,756.3	0.00	0.00	0.00
11,000.0	90.00	179.93	6,200.5	-1,560.00	-5,817.8	-793.9	5,856.1	0.00	0.00	0.00
11,100.0	90.00	179.93	6,200.5	-1,560.00	-5,917.8	-793.8	5,955.9	0.00	0.00	0.00
11,200.0	90.00	179.93	6,200.5	-1,560.00	-6,017.8	-793.7	6,055.7	0.00	0.00	0.00
11,300.0	90.00	179.93	6,200.5	-1,560.00	-6,117.8	-793.6	6,155.5	0.00	0.00	0.00
11,400.0	90.00	179.93	6,200.5	-1,560.00	-6,217.8	-793.5	6,255.3	0.00	0.00	0.00
<b>MID-LAT TGT: 0ft FNL &amp; 10ft FWL of Sec 14</b>										
<b>11,402.9</b>	<b>90.00</b>	<b>179.93</b>	<b>6,200.5</b>	<b>-1,560.00</b>	<b>-6,220.6</b>	<b>-793.4</b>	<b>6,258.1</b>	<b>0.00</b>	<b>0.00</b>	<b>0.00</b>
<b>EOT TO 178.85° AZ</b>										
<b>11,438.9</b>	<b>90.00</b>	<b>178.85</b>	<b>6,200.5</b>	<b>-1,560.00</b>	<b>-6,256.7</b>	<b>-793.1</b>	<b>6,294.1</b>	<b>3.00</b>	<b>0.00</b>	<b>-3.00</b>
11,500.0	90.00	178.85	6,200.5	-1,560.00	-6,317.8	-791.8	6,355.0	0.00	0.00	0.00
11,600.0	90.00	178.85	6,200.5	-1,560.00	-6,417.7	-789.8	6,454.6	0.00	0.00	0.00
11,700.0	90.00	178.85	6,200.5	-1,560.00	-6,517.7	-787.8	6,554.3	0.00	0.00	0.00
11,800.0	90.00	178.85	6,200.5	-1,560.00	-6,617.7	-785.8	6,653.9	0.00	0.00	0.00
11,900.0	90.00	178.85	6,200.5	-1,560.00	-6,717.7	-783.8	6,753.6	0.00	0.00	0.00
12,000.0	90.00	178.85	6,200.5	-1,560.00	-6,817.7	-781.8	6,853.2	0.00	0.00	0.00
12,100.0	90.00	178.85	6,200.5	-1,560.00	-6,917.6	-779.8	6,952.9	0.00	0.00	0.00
12,200.0	90.00	178.85	6,200.5	-1,560.00	-7,017.6	-777.8	7,052.6	0.00	0.00	0.00
12,300.0	90.00	178.85	6,200.5	-1,560.00	-7,117.6	-775.8	7,152.2	0.00	0.00	0.00
12,400.0	90.00	178.85	6,200.5	-1,560.00	-7,217.6	-773.8	7,251.9	0.00	0.00	0.00
12,500.0	90.00	178.85	6,200.5	-1,560.00	-7,317.6	-771.8	7,351.5	0.00	0.00	0.00
12,600.0	90.00	178.85	6,200.5	-1,560.00	-7,417.5	-769.8	7,451.2	0.00	0.00	0.00
12,700.0	90.00	178.85	6,200.5	-1,560.00	-7,517.5	-767.8	7,550.9	0.00	0.00	0.00
12,800.0	90.00	178.85	6,200.5	-1,560.00	-7,617.5	-765.8	7,650.5	0.00	0.00	0.00
12,900.0	90.00	178.85	6,200.5	-1,560.00	-7,717.5	-763.8	7,750.2	0.00	0.00	0.00
13,000.0	90.00	178.85	6,200.5	-1,560.00	-7,817.5	-761.8	7,849.8	0.00	0.00	0.00

<b>Database:</b>	EDM 5000.1 Single User Db	<b>Local Co-ordinate Reference:</b>	Well STATE ANTELOPE A-11-14XRLNB
<b>Company:</b>	BONANZA CREEK ENERGY INC.	<b>TVD Reference:</b>	KB-EST @ 4640.5usft (Original Well Elev)
<b>Project:</b>	WELD COUNTY, COLORADO (NAD 83)	<b>MD Reference:</b>	KB-EST @ 4640.5usft (Original Well Elev)
<b>Site:</b>	SW SW SEC. 2 T5N R62W 6th P.M.	<b>North Reference:</b>	True
<b>Well:</b>	STATE ANTELOPE A-11-14XRLNB	<b>Survey Calculation Method:</b>	Minimum Curvature
<b>Wellbore:</b>	ORIGINAL WELLBORE		
<b>Design:</b>	PROPOSAL #1		

Planned Survey										
MD (usft)	Inc (°)	Azi (°)	TVD (usft)	SS (usft)	+N/-S (usft)	+E/-W (usft)	Vertical Section (usft)	Dogleg Rate (°/100usft)	Build Rate (°/100usft)	Turn Rate (°/100usft)
13,100.0	90.00	178.85	6,200.5	-1,560.00	-7,917.4	-759.8	7,949.5	0.00	0.00	0.00
13,200.0	90.00	178.85	6,200.5	-1,560.00	-8,017.4	-757.8	8,049.1	0.00	0.00	0.00
13,300.0	90.00	178.85	6,200.5	-1,560.00	-8,117.4	-755.8	8,148.8	0.00	0.00	0.00
13,400.0	90.00	178.85	6,200.5	-1,560.00	-8,217.4	-753.8	8,248.5	0.00	0.00	0.00
13,500.0	90.00	178.85	6,200.5	-1,560.00	-8,317.4	-751.8	8,348.1	0.00	0.00	0.00
13,600.0	90.00	178.85	6,200.5	-1,560.00	-8,417.3	-749.8	8,447.8	0.00	0.00	0.00
13,700.0	90.00	178.85	6,200.5	-1,560.00	-8,517.3	-747.8	8,547.4	0.00	0.00	0.00
13,800.0	90.00	178.85	6,200.5	-1,560.00	-8,617.3	-745.8	8,647.1	0.00	0.00	0.00
13,900.0	90.00	178.85	6,200.5	-1,560.00	-8,717.3	-743.8	8,746.8	0.00	0.00	0.00
14,000.0	90.00	178.85	6,200.5	-1,560.00	-8,817.3	-741.8	8,846.4	0.00	0.00	0.00
14,100.0	90.00	178.85	6,200.5	-1,560.00	-8,917.2	-739.8	8,946.1	0.00	0.00	0.00
14,200.0	90.00	178.85	6,200.5	-1,560.00	-9,017.2	-737.8	9,045.7	0.00	0.00	0.00
14,300.0	90.00	178.85	6,200.5	-1,560.00	-9,117.2	-735.8	9,145.4	0.00	0.00	0.00
14,400.0	90.00	178.85	6,200.5	-1,560.00	-9,217.2	-733.8	9,245.0	0.00	0.00	0.00
14,500.0	90.00	178.85	6,200.5	-1,560.00	-9,317.2	-731.8	9,344.7	0.00	0.00	0.00
14,600.0	90.00	178.85	6,200.5	-1,560.00	-9,417.1	-729.8	9,444.4	0.00	0.00	0.00
14,700.0	90.00	178.85	6,200.5	-1,560.00	-9,517.1	-727.8	9,544.0	0.00	0.00	0.00
14,800.0	90.00	178.85	6,200.5	-1,560.00	-9,617.1	-725.8	9,643.7	0.00	0.00	0.00
14,900.0	90.00	178.85	6,200.5	-1,560.00	-9,717.1	-723.8	9,743.3	0.00	0.00	0.00
15,000.0	90.00	178.85	6,200.5	-1,560.00	-9,817.1	-721.8	9,843.0	0.00	0.00	0.00
15,100.0	90.00	178.85	6,200.5	-1,560.00	-9,917.0	-719.8	9,942.6	0.00	0.00	0.00
15,200.0	90.00	178.85	6,200.5	-1,560.00	-10,017.0	-717.8	10,042.3	0.00	0.00	0.00
15,300.0	90.00	178.85	6,200.5	-1,560.00	-10,117.0	-715.8	10,142.0	0.00	0.00	0.00
15,400.0	90.00	178.85	6,200.5	-1,560.00	-10,217.0	-713.8	10,241.6	0.00	0.00	0.00
15,500.0	90.00	178.85	6,200.5	-1,560.00	-10,317.0	-711.8	10,341.3	0.00	0.00	0.00
15,600.0	90.00	178.85	6,200.5	-1,560.00	-10,416.9	-709.8	10,440.9	0.00	0.00	0.00
15,700.0	90.00	178.85	6,200.5	-1,560.00	-10,516.9	-707.8	10,540.6	0.00	0.00	0.00
15,800.0	90.00	178.85	6,200.5	-1,560.00	-10,616.9	-705.8	10,640.3	0.00	0.00	0.00
15,900.0	90.00	178.85	6,200.5	-1,560.00	-10,716.9	-703.8	10,739.9	0.00	0.00	0.00
16,000.0	90.00	178.85	6,200.5	-1,560.00	-10,816.9	-701.8	10,839.6	0.00	0.00	0.00
16,100.0	90.00	178.85	6,200.5	-1,560.00	-10,916.8	-699.8	10,939.2	0.00	0.00	0.00
16,200.0	90.00	178.85	6,200.5	-1,560.00	-11,016.8	-697.8	11,038.9	0.00	0.00	0.00
<b>BHL: 470ft FSL &amp; 10ft FWL of Sec 14</b>										
<b>16,276.0</b>	<b>90.00</b>	<b>178.85</b>	<b>6,200.5</b>	<b>-1,560.00</b>	<b>-11,092.8</b>	<b>-696.3</b>	<b>11,114.6</b>	<b>0.00</b>	<b>0.00</b>	<b>0.00</b>

<b>Database:</b>	EDM 5000.1 Single User Db	<b>Local Co-ordinate Reference:</b>	Well STATE ANTELOPE A-11-14XRLNB
<b>Company:</b>	BONANZA CREEK ENERGY INC.	<b>TVD Reference:</b>	KB-EST @ 4640.5usft (Original Well Elev)
<b>Project:</b>	WELD COUNTY, COLORADO (NAD 83)	<b>MD Reference:</b>	KB-EST @ 4640.5usft (Original Well Elev)
<b>Site:</b>	SW SW SEC. 2 T5N R62W 6th P.M.	<b>North Reference:</b>	True
<b>Well:</b>	STATE ANTELOPE A-11-14XRLNB	<b>Survey Calculation Method:</b>	Minimum Curvature
<b>Wellbore:</b>	ORIGINAL WELLBORE		
<b>Design:</b>	PROPOSAL #1		

## Plan Annotations

MD (usft)	TVD (usft)	Local Coordinates		Comment
		+N/-S (usft)	+E/-W (usft)	
0.0	0.0	0.0	0.0	SHL: 838ft FSL & 811ft FWL of Sec 2
1,550.0	1,550.0	0.0	0.0	SURFACE CASING
1,650.0	1,650.0	0.0	0.0	START NUDGE (2°/100ft BUR)
2,050.0	2,048.7	0.0	-27.9	EOB TO 8° INC
2,781.3	2,765.1	-92.8	-128.6	EOB & T TO 16.63° INC & 208.07° AZ
3,241.4	3,193.4	-239.7	-206.9	EOB TO 25.83° INC
4,337.7	4,180.2	-661.1	-431.6	END OF TANGENT
5,629.2	5,428.4	-913.7	-566.3	EOD TO VERTICAL
5,659.2	5,458.4	-913.7	-566.3	KOP (8°/100ft BUR)
6,596.7	6,150.2	-1,430.9	-685.7	START OF TANGENT
6,696.7	6,176.1	-1,525.0	-707.4	END OF TANGENT
6,884.2	6,200.5	-1,705.7	-749.1	HZ LP *NEW*: 827.8ft FNL & 60ft FWL of Sec 11
7,319.7	6,200.5	-2,137.4	-798.1	EOT TO 179.93° AZ
11,402.9	6,200.5	-6,220.6	-793.4	MID-LAT TGT: 0ft FNL & 10ft FWL of Sec 14
11,438.9	6,200.5	-6,256.7	-793.1	EOT TO 178.85° AZ
16,276.0	6,200.5	-11,092.8	-696.3	BHL: 470ft FSL & 10ft FWL of Sec 14