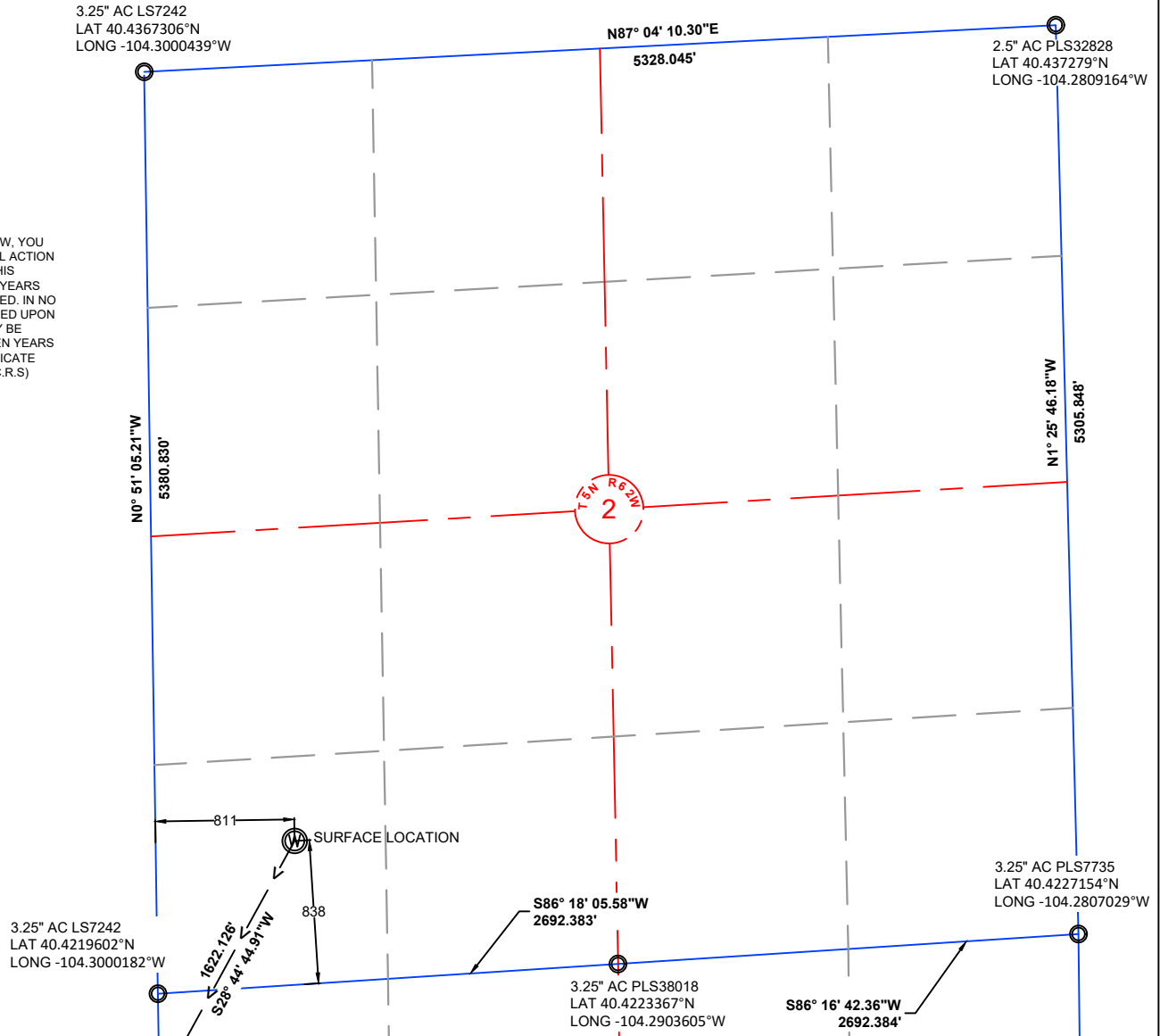


NOTE: UNDER COLORADO LAW, YOU MUST COMMENCE ANY LEGAL ACTION BASED ON ANY DEFECT IN THIS CERTIFICATE WITHIN THREE YEARS AFTER DEFECT IS DISCOVERED. IN NO EVENT MAY ANY ACTION BASED UPON ANY DEFECT IN THIS SURVEY BE COMMENCED MORE THAN TEN YEARS AFTER DATE OF THIS CERTIFICATE SHOWN HEREON. (13-80105 C.R.S.)



NOTES:

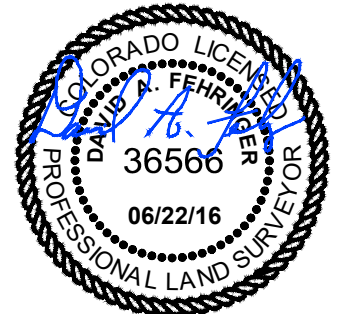
- ALL BEARINGS ARE GRID BASED UPON THE COLORADO STATE PLANE COORDINATE SYSTEM, NORTH ZONE, NAD83(2011) DERIVED FROM POST-PROCESSED STATIC GPS OBSERVATIONS.
- DISTANCES ARE ON GRID
- VERTICAL DATUM IS NAVD88 BASED UPON GPS OBSERVATIONS
- PDOP VALUE EQUALS 1.6
- GPS OPERATOR: MARC MAYER.
- GROUND ELEVATION AT WELLHEAD = 4623.48'
- ALL SECTION LENGTHS ARE MEASURED DISTANCES UNLESS NOTED BY (R), RECORD BEARING AND DISTANCE.
- NEAREST CULTURAL DISTANCES
BUILDINGS: 5280' +/-
BUILDING UNIT: 5280' +/-
HIGH OCCUPANCY BUILDING UNIT: 5280'+
DESIGNATED OUTSIDE ACTIVITY AREA: 5280'+
PUBLIC ROAD: 5280'+
ABOVE GROUND UTILITY: 427' +/-
RAILROAD: 5280'+
PROPERTY LINE: 811' +/-

1	NAD 83		STATE PLANE COORDINATES	
A-11-14XRLNB	LATITUDE	LONGITUDE	NORTHING	EASTING
SURFACE	40.4243768	-104.2971089	1399712.254	3334886.882
TARGET 1	40.4205022	-104.2999799	1398290.035	3334106.762
MID LATERAL	40.4073017	-104.299958	1393481.636	3334177.914
BOTTOM HOLE	40.3939282	-104.2996085	1388611.467	3334341.209

PAD CORNERS	NAD 83	
SA 14-2 PAD	LATITUDE	LONGITUDE
NW	40.4248119	-104.2977952
NE	40.4243171	-104.2956531
SE	40.4232373	-104.2956674
SW	40.4232007	-104.2978115

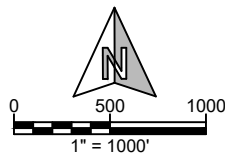
CERTIFICATE OF SURVEYOR:

I, DAVID A. FEHRINGER OF LANDER, WYOMING HEREBY CERTIFY THAT THIS WELL LOCATION CERTIFICATE WAS PREPARED FROM NOTES TAKEN DURING AN ACTUAL SURVEY ON JUNE 03, 2016; AND THAT IT CORRECTLY SHOWS THE DRILLING LOCATION OF BONANZA CREEK ENERGY, INC. STATE ANTELOPE A-11-14XRLNB AS STAKED DURING SAID SURVEY. THIS MAP DOES NOT REPRESENT A BOUNDARY SURVEY OR AN IMPROVEMENT LOCATION PLAT AND SHOULD NOT BE USED FOR THE ESTABLISHMENT OF BOUNDARY LINES.



WILLIAM H. SMITH & ASSOCIATES, Inc.
155 N. 1st Street
Lander, WY 82520
Phone: 307-335-5646

Drawn By: MAM
Job No.: 15043
Revision:
Checked By: DAF
Date: 06/22/16



IF BAR LENGTH DOES NOT EQUAL 1"(ONE INCH), THIS PAGE WAS NOT PLOTTED TO THE INTENDED SCALE.

LOCATION CERTIFICATE

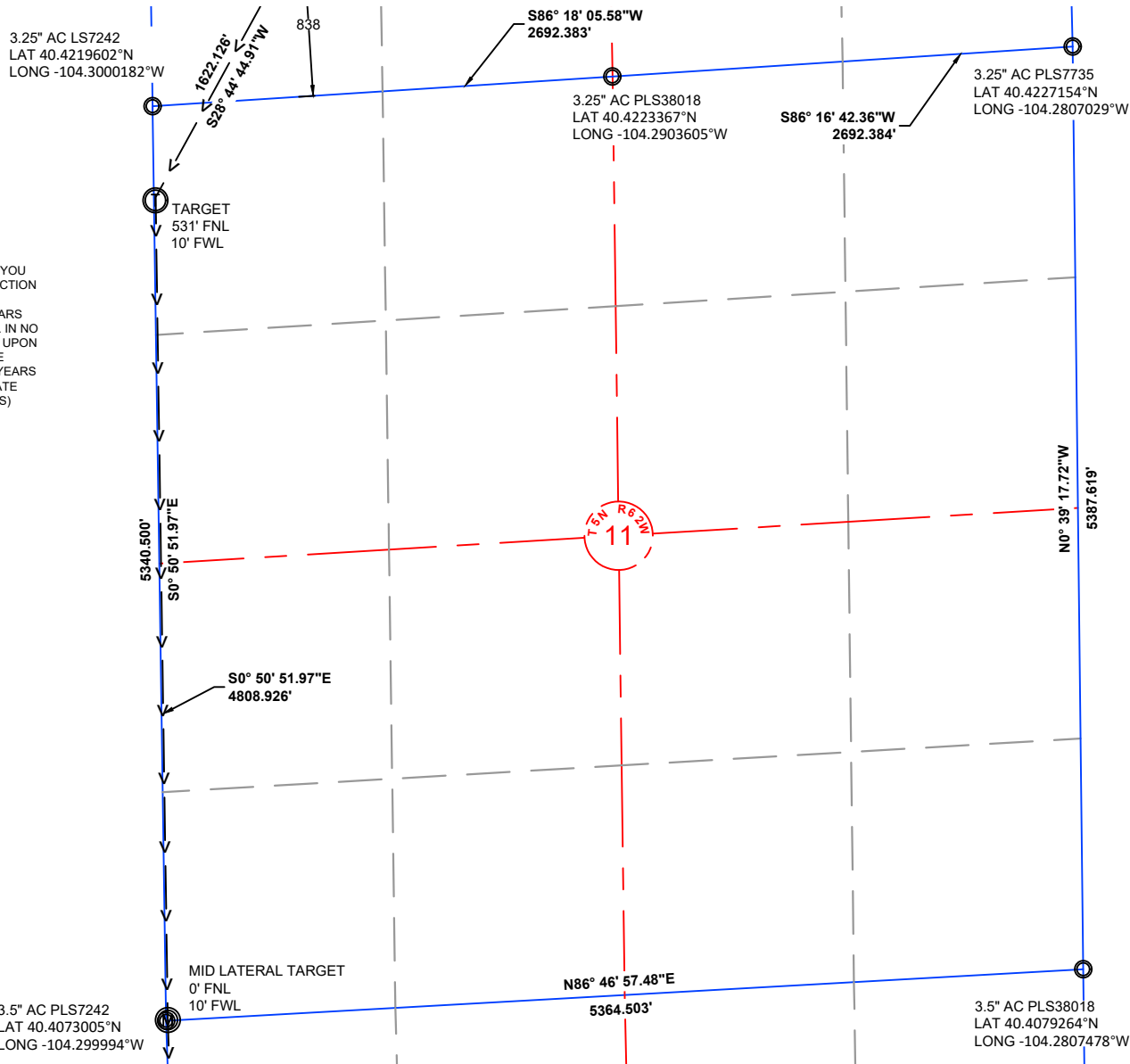
STATE ANTELOPE
A-11-14XRLNB
SURFACE
SW¼ SW¼, SECTION 2,
T.5N., R.62W., 6th PM
WELD COUNTY, COLORADO



410 17th Street
Denver, CO 80202
(720) 440-6100

SHEET
1
OF
3

NOTE: UNDER COLORADO LAW, YOU MUST COMMENCE ANY LEGAL ACTION BASED ON ANY DEFECT IN THIS CERTIFICATE WITHIN THREE YEARS AFTER DEFECT IS DISCOVERED. IN NO EVENT MAY ANY ACTION BASED UPON ANY DEFECT IN THIS SURVEY BE COMMENCED MORE THAN TEN YEARS AFTER DATE OF THIS CERTIFICATE SHOWN HEREON. (13-80105 C.R.S.)



NOTES:

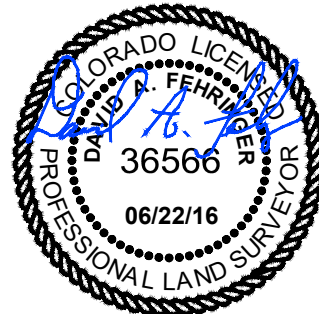
- ALL BEARINGS ARE GRID BASED UPON THE COLORADO STATE PLANE COORDINATE SYSTEM, NORTH ZONE, NAD83(2011) DERIVED FROM POST-PROCESSED STATIC GPS OBSERVATIONS.
- DISTANCES ARE ON GRID
- VERTICAL DATUM IS NAVD88 BASED UPON GPS OBSERVATIONS
- PDOP VALUE EQUALS 1.6
- GPS OPERATOR: MARC MAYER.
- GROUND ELEVATION AT WELLHEAD = 4623.48'
- ALL SECTION LENGTHS ARE MEASURED DISTANCES UNLESS NOTED BY (R), RECORD BEARING AND DISTANCE.
- NEAREST CULTURAL DISTANCES
BUILDINGS: 5280' +/-
BUILDING UNIT: 5280' +/-
HIGH OCCUPANCY BUILDING UNIT: 5280'+
DESIGNATED OUTSIDE ACTIVITY AREA: 5280'+
PUBLIC ROAD: 5280'+
ABOVE GROUND UTILITY: 427' +/-
RAILROAD: 5280'+
PROPERTY LINE: 811' +/-

1	NAD 83		STATE PLANE COORDINATES	
A-11-14XRLNB	LATITUDE	LONGITUDE	NORTHING	EASTING
SURFACE	40.4243768	-104.2971089	1399712.254	3334886.882
TARGET 1	40.4205022	-104.2999799	1398290.035	3334106.762
MID LATERAL	40.4073017	-104.299958	1393481.636	3334177.914
BOTTOM HOLE	40.3939282	-104.2996085	1388611.467	3334341.209

PAD CORNERS	NAD 83	
SA 14-2 PAD	LATITUDE	LONGITUDE
NW	40.4248119	-104.2977952
NE	40.4243171	-104.2956531
SE	40.4232373	-104.2956674
SW	40.4232007	-104.2978115

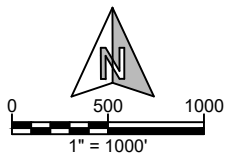
CERTIFICATE OF SURVEYOR:

I, DAVID A. FEHRINGER OF LANDER, WYOMING HEREBY CERTIFY THAT THIS WELL LOCATION CERTIFICATE WAS PREPARED FROM NOTES TAKEN DURING AN ACTUAL SURVEY ON JUNE 03, 2016; AND THAT IT CORRECTLY SHOWS THE DRILLING LOCATION OF BONANZA CREEK ENERGY, INC. STATE ANTELOPE A-11-14XRLNB AS STAKED DURING SAID SURVEY. THIS MAP DOES NOT REPRESENT A BOUNDARY SURVEY OR AN IMPROVEMENT LOCATION PLAT AND SHOULD NOT BE USED FOR THE ESTABLISHMENT OF BOUNDARY LINES.



**WILLIAM H. SMITH &
ASSOCIATES, Inc.**
155 N. 1st Street
Lander, WY 82520
Phone: 307-335-5646

Drawn By: MAM
Job No.: 15043
Revision:
Checked By: DAF
Date: 06/22/16



IF BAR LENGTH DOES NOT EQUAL
1"(ONE INCH), THIS PAGE WAS NOT
PLOTTED TO THE INTENDED SCALE.

LOCATION CERTIFICATE

**STATE ANTELOPE
A-11-14XRLNB
LATERAL**

W $\frac{1}{2}$ W $\frac{1}{2}$, SECTION 11,
T.5N., R.62W., 6th PM
WELD COUNTY, COLORADO



410 17th Street
Denver, CO 80202
(720) 440-6100

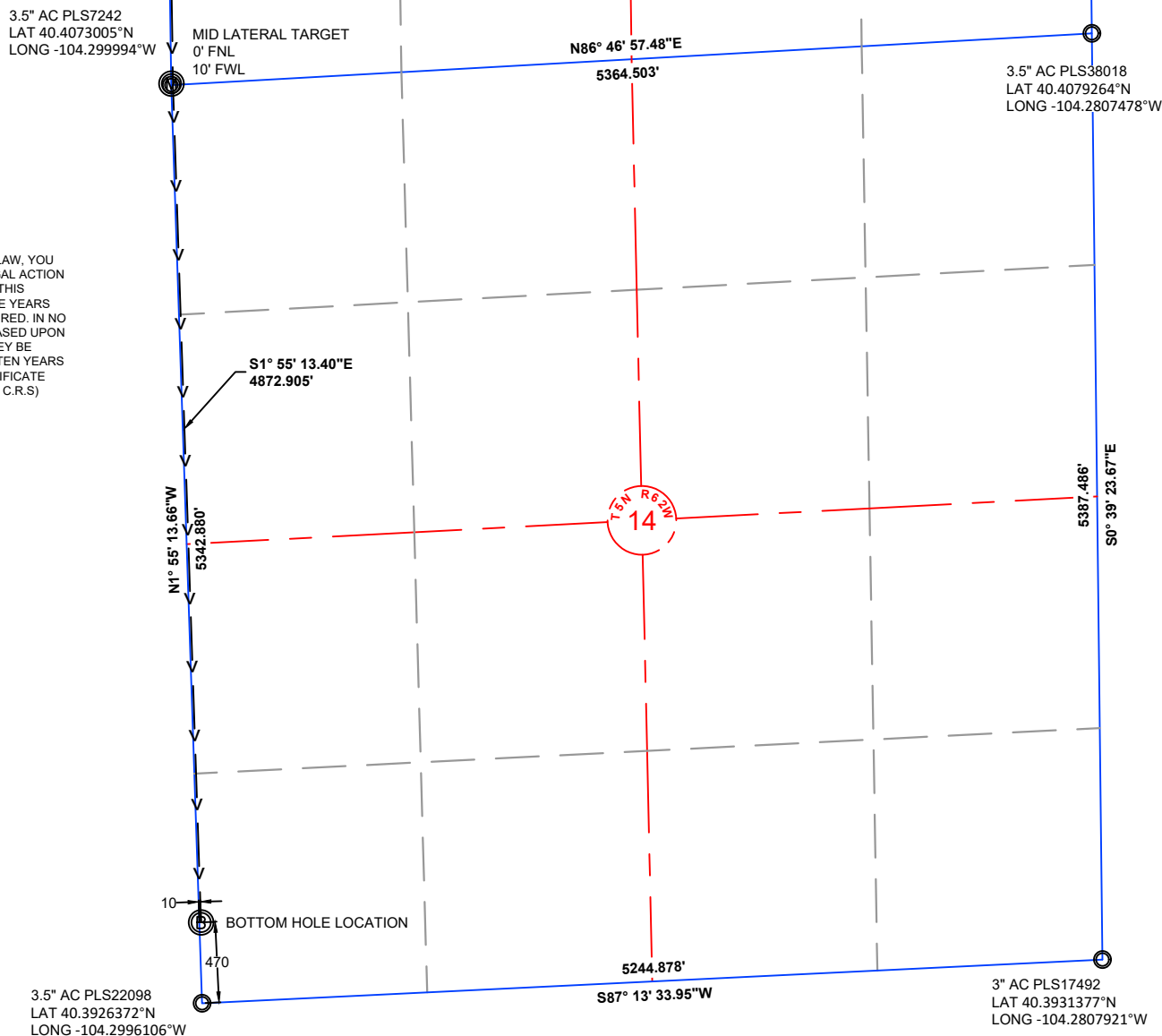
SHEET

2

OF

3

NOTE: UNDER COLORADO LAW, YOU MUST COMMENCE ANY LEGAL ACTION BASED ON ANY DEFECT IN THIS CERTIFICATE WITHIN THREE YEARS AFTER DEFECT IS DISCOVERED. IN NO EVENT MAY ANY ACTION BASED UPON ANY DEFECT IN THIS SURVEY BE COMMENCED MORE THAN TEN YEARS AFTER DATE OF THIS CERTIFICATE SHOWN HEREON. (13-80105 C.R.S.)



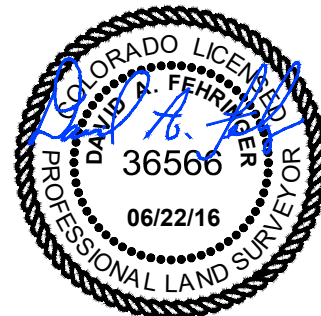
NOTES:

- ALL BEARINGS ARE GRID BASED UPON THE COLORADO STATE PLANE COORDINATE SYSTEM, NORTH ZONE, NAD83(2011) DERIVED FROM POST-PROCESSED STATIC GPS OBSERVATIONS.
- DISTANCES ARE ON GRID
- VERTICAL DATUM IS NAVD88 BASED UPON GPS OBSERVATIONS
- PDOP VALUE EQUALS 1.6.
- GPS OPERATOR: MARC MAYER.
- GROUND ELEVATION AT WELLHEAD = 4623.48'
- ALL SECTION LENGTHS ARE MEASURED DISTANCES UNLESS NOTED BY (R), RECORD BEARING AND DISTANCE.
- NEAREST CULTURAL DISTANCES
BUILDINGS: 5280' +/-
BUILDING UNIT: 5280' +/-
HIGH OCCUPANCY BUILDING UNIT: 5280'+
DESIGNATED OUTSIDE ACTIVITY AREA: 5280'+
PUBLIC ROAD: 5280'+
ABOVE GROUND UTILITY: 427' +/-
RAILROAD: 5280'+
PROPERTY LINE: 811' +/-

1	NAD 83		STATE PLANE COORDINATES	
A-11-14XRLNB	LATITUDE	LONGITUDE	NORTHING	EASTING
SURFACE	40.4243768	-104.2971089	1399712.254	3334886.882
TARGET 1	40.4205022	-104.2999799	1398290.035	3334106.762
MID LATERAL	40.4073017	-104.299958	1393481.636	3334177.914
BOTTOM HOLE	40.3939282	-104.2996085	1388611.467	3334341.209

CERTIFICATE OF SURVEYOR:

I, DAVID A. FEHRINGER OF LANDER, WYOMING HEREBY CERTIFY THAT THIS WELL LOCATION CERTIFICATE WAS PREPARED FROM NOTES TAKEN DURING AN ACTUAL SURVEY ON JUNE 03, 2016; AND THAT IT CORRECTLY SHOWS THE DRILLING LOCATION OF BONANZA CREEK ENERGY, INC. STATE ANTELOPE A-11-14XRLNB AS STAKED DURING SAID SURVEY. THIS MAP DOES NOT REPRESENT A BOUNDARY SURVEY OR AN IMPROVEMENT LOCATION PLAT AND SHOULD NOT BE USED FOR THE ESTABLISHMENT OF BOUNDARY LINES.

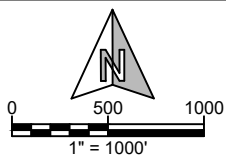


PAD CORNERS	NAD 83	
SA 14-2 PAD	LATITUDE	LONGITUDE
NW	40.4248119	-104.2977952
NE	40.4243171	-104.2956531
SE	40.4232373	-104.2956674
SW	40.4232007	-104.2978115



**WILLIAM H. SMITH &
ASSOCIATES, Inc.**
155 N. 1st Street
Lander, WY 82520
Phone: 307-335-5646

Drawn By: MAM
Job No.: 15043
Checked By: DAF
Date: 06/22/16
Revision:



IF BAR LENGTH DOES NOT EQUAL
1"(ONE INCH), THIS PAGE WAS NOT
PLOTTED TO THE INTENDED SCALE.

LOCATION CERTIFICATE

STATE ANTELOPE
A-11-14XRLNB
BOTTOM HOLE
W½ W½, SECTION 14,
T.5N., R.62W., 6th PM
WELD COUNTY, COLORADO



410 17th Street
Denver, CO 80202
(720) 440-6100

SHEET
3
OF
3