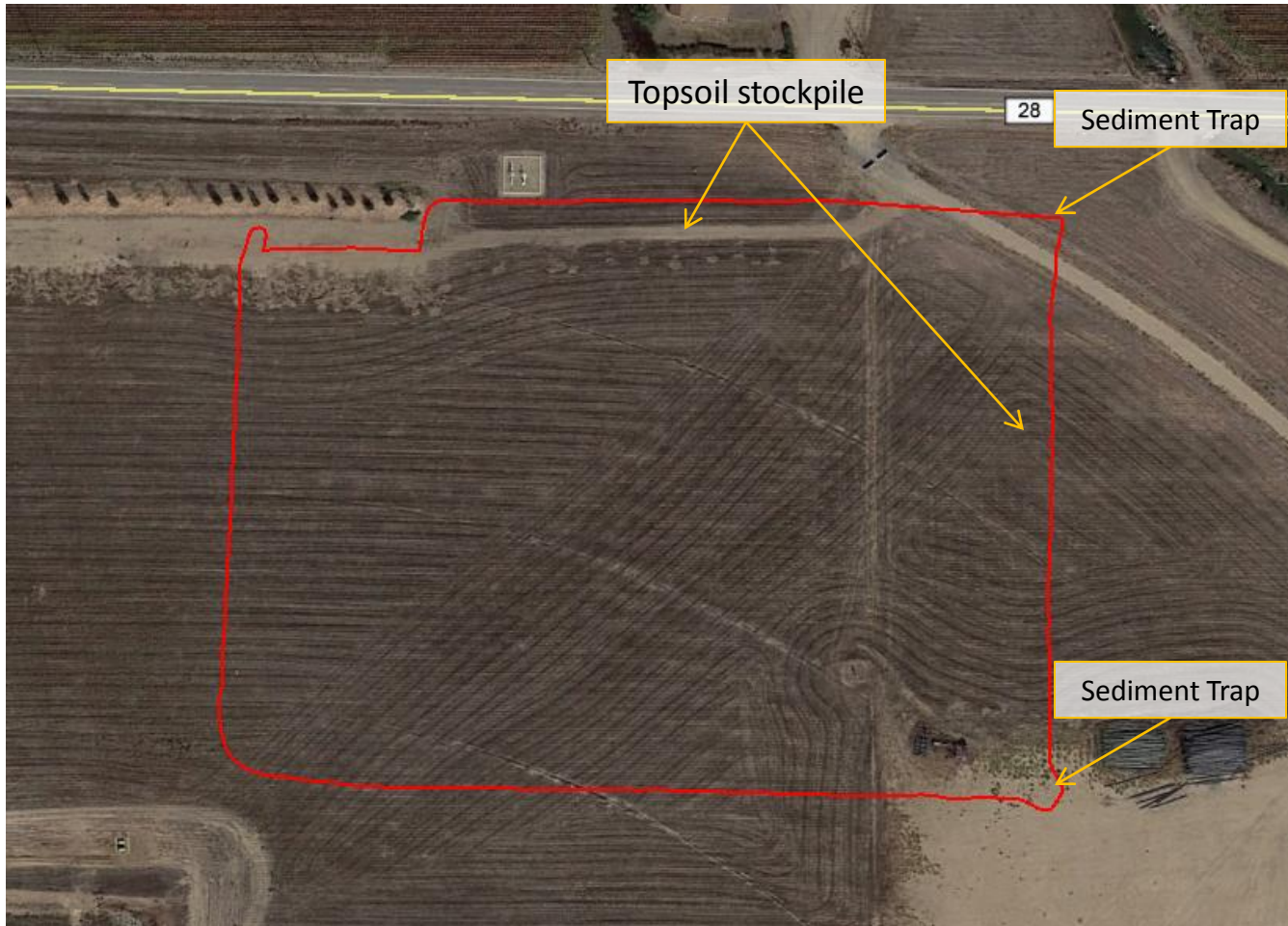


Interim Reclamation and Stormwater Inspection- Overview



Google Earth aerial photo taken 10/9/2015 of the BBKB 37N-35HZ location. An area of 7.54 acres was mapped on 1/13/2017 using a Trimble Juno 3B handheld device. Perimeter of the area mapped and highlighted in red. Topsoil stockpile stored along the northern and eastern perimeter of location. Ditch and berm BMP installed along entire perimeter with two (2) sediment traps installed at the northeast and southeast corner of location.

Interim Reclamation and Stormwater Inspection



Photo 1. Photo taken from the northeast location, facing Southwest, towards the sediment trap.

Interim Reclamation and Stormwater Inspection



Photo 2. Photo taken from the northeast location, facing West. Ditch and berm installed around the entire perimeter of the location. Also, topsoil stockpile stored along northern and eastern perimeter of location.

Interim Reclamation and Stormwater Inspection



Photo 3. Photo taken from the northeast location, facing South. Ditch and berm installed around the entire perimeter of the location. Also, topsoil stockpile stored along eastern and northern perimeter of location.

Interim Reclamation and Stormwater Inspection



Photo 4. Photo taken from the southeast location, facing Northwest, towards the sediment trap.

Interim Reclamation and Stormwater Inspection



Photo 5. Photo taken from the southeast location, facing West. Ditch and berm installed around the entire perimeter of the location.

Interim Reclamation and Stormwater Inspection



COLORADO
Oil & Gas Conservation
Commission
Department of Natural Resources



Photo 6. Photo taken from the southern location, facing West. Operator using ramps to access location with equipment to mitigate impacts to stormwater BMPs.

Interim Reclamation and Stormwater Inspection



Photo 7. Photo taken from the southwest location, facing North. Ditch and berm installed around the entire perimeter of the location.

Interim Reclamation and Stormwater Inspection



Photo 8. Photo taken from the northwest location, facing East. Ditch and berm installed around the entire perimeter of the location.