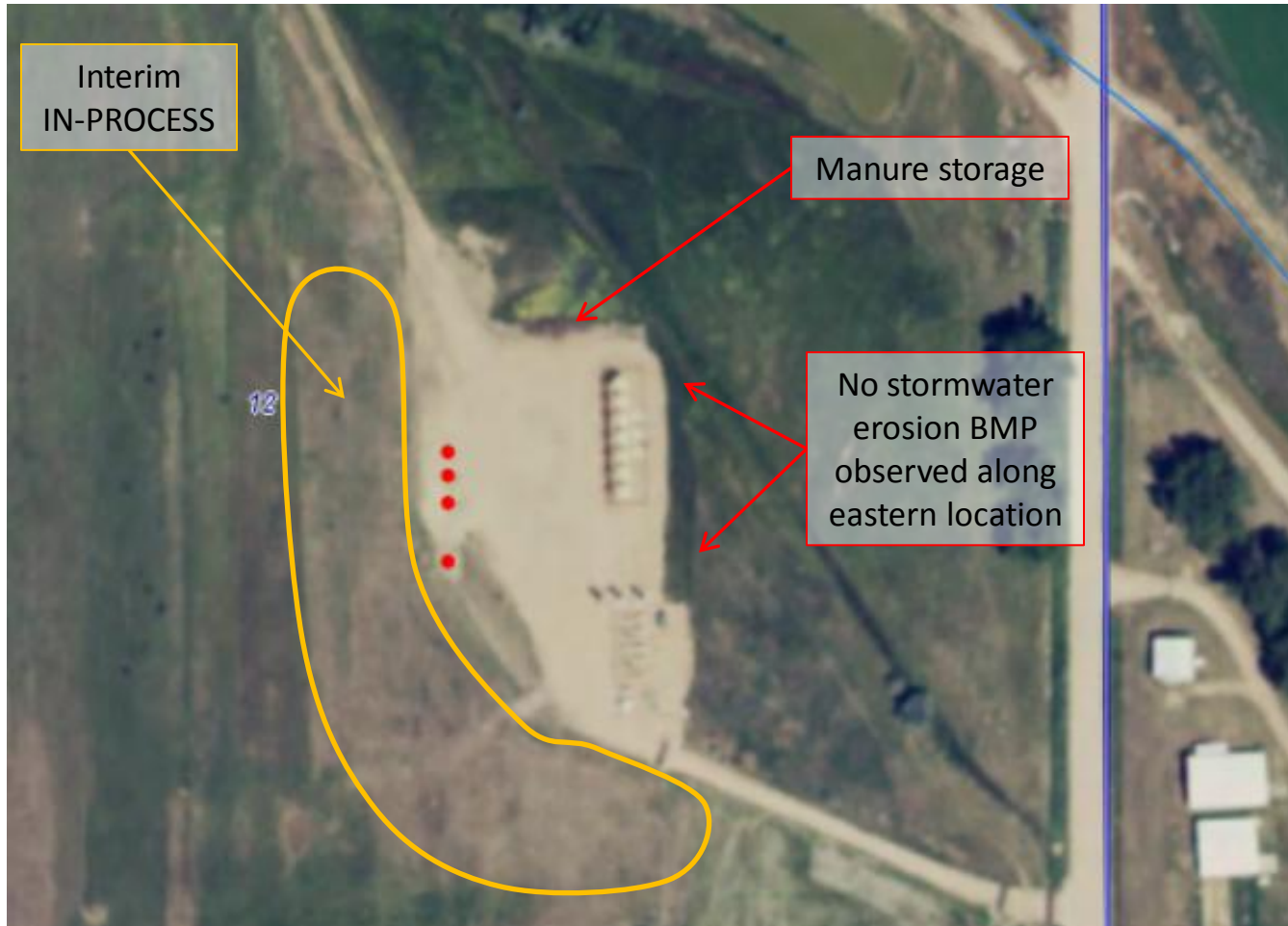
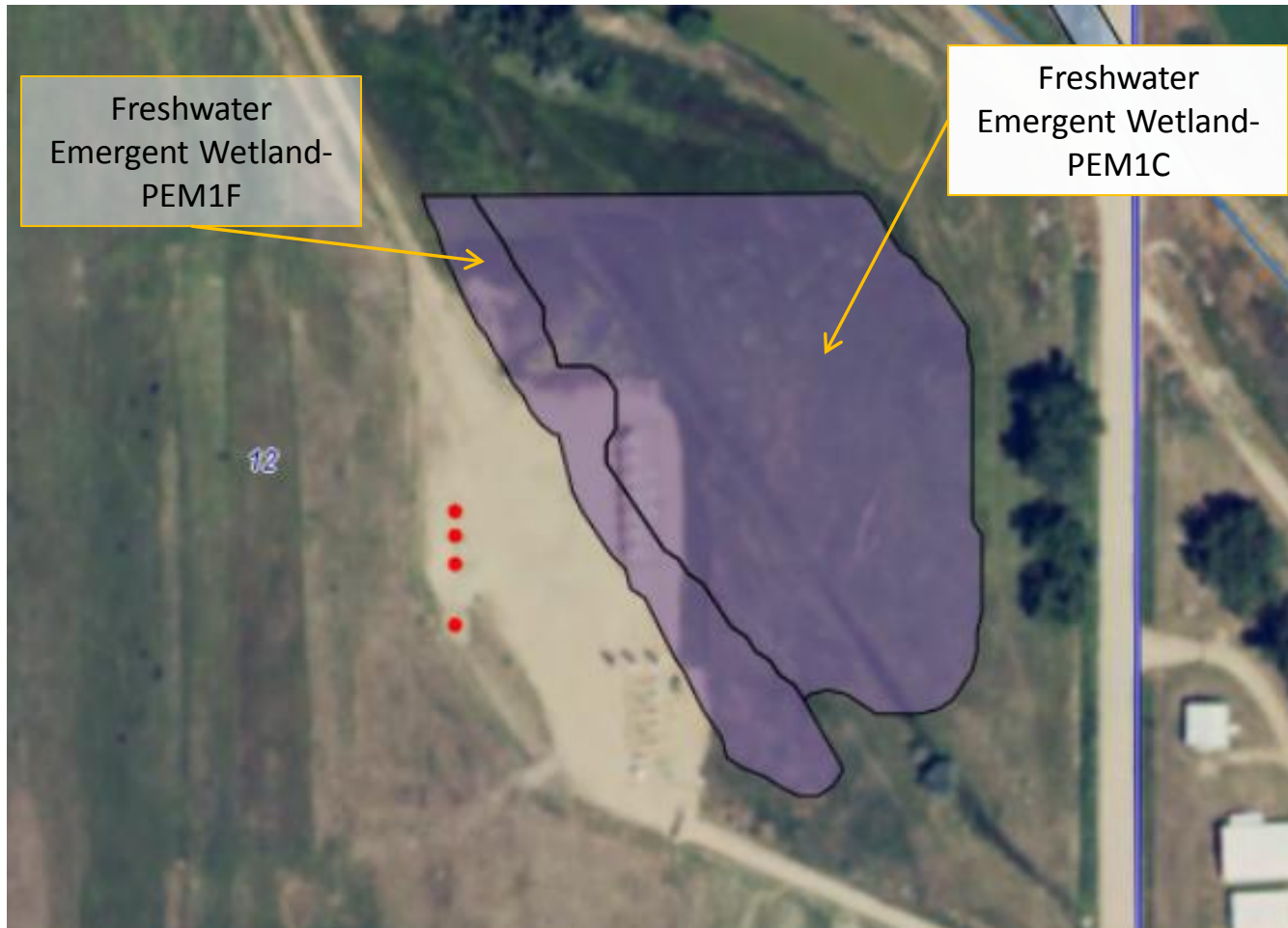


Interim Reclamation and Stormwater Inspection



Aerial imagery using COGCC GISOnline database of the Shoemaker AA07-65HN location overview. Portions of the western interim reclamation area are IN-PROCESS and lack uniform vegetative growth- refer to Photo 3. Manure storage along the north pad needs to be removed. Manure appears to be discharging into a Freshwater Emergent Wetland- refer to the following aerial imagery.

Interim Reclamation and Stormwater Inspection



Aerial imagery using COGCC GISOnline illustrating National Wetlands Inventory data. Two types of Freshwater Emergent Wetland are classified for this region- PEM1F and PEM1C.

Interim Reclamation and Stormwater Inspection



Photo 1. Photo taken from the northern pad location, facing East. Need to remove all manure from location. Manure appears to be discharging into a Freshwater Emergent Wetland.

Interim Reclamation and Stormwater Inspection



Photo 2. Photo taken from the northern pad location, facing Southeast. Need to remove all manure from location. Manure appears to be discharging into a Freshwater Emergent Wetland.

Interim Reclamation and Stormwater Inspection



Photo 3. Photo taken from the northeast location, facing West. Appears manure was placed over wattle BMP for location.

Interim Reclamation and Stormwater Inspection



Photo 4. Photo taken from the western interim reclamation area, facing South. Portions of the interim reclamation area do not have uniform vegetative growth, like this photo illustrates. Berm and ditch BMP observed along the western interim area.