

BILL BARRETT CORP

WELD COUNTY, COLORADO

CVR 5-63-32_33 Pad

CVR 5-63-32-6457B2B

Wellbore #1

Plan: Design #1

Standard Planning Report

28 June, 2016



Bill Barrett Corporation

COMPANY DETAILS: BILL BARRETT CORP

Calculation Method: Minimum Curvature
Error System: ISCWSA
Scan Method: Closest Approach 3D
Error Surface: Elliptical Conic
Warning Method: Error Ratio

REFERENCE INFORMATION

Co-ordinate (N/E) Reference: Well CVR 5-63-32-6457B2B, True North
Vertical (TVD) Reference: KB @ 4597.0ft (Original Well Elev)
Section (VS) Reference: Slot - (0.0N, 0.0E)
Measured Depth Reference: KB @ 4597.0ft (Original Well Elev)
Calculation Method: Minimum Curvature

WELL DETAILS: CVR 5-63-32-6457B2B

+N/-S	+E/-W	Northing	Easting	Latitude	Longitude
0.0	0.0	1372928.04	3287445.63	40° 21' 9.000 N	104° 28' 7.021 W

WELLBORE TARGET DETAILS

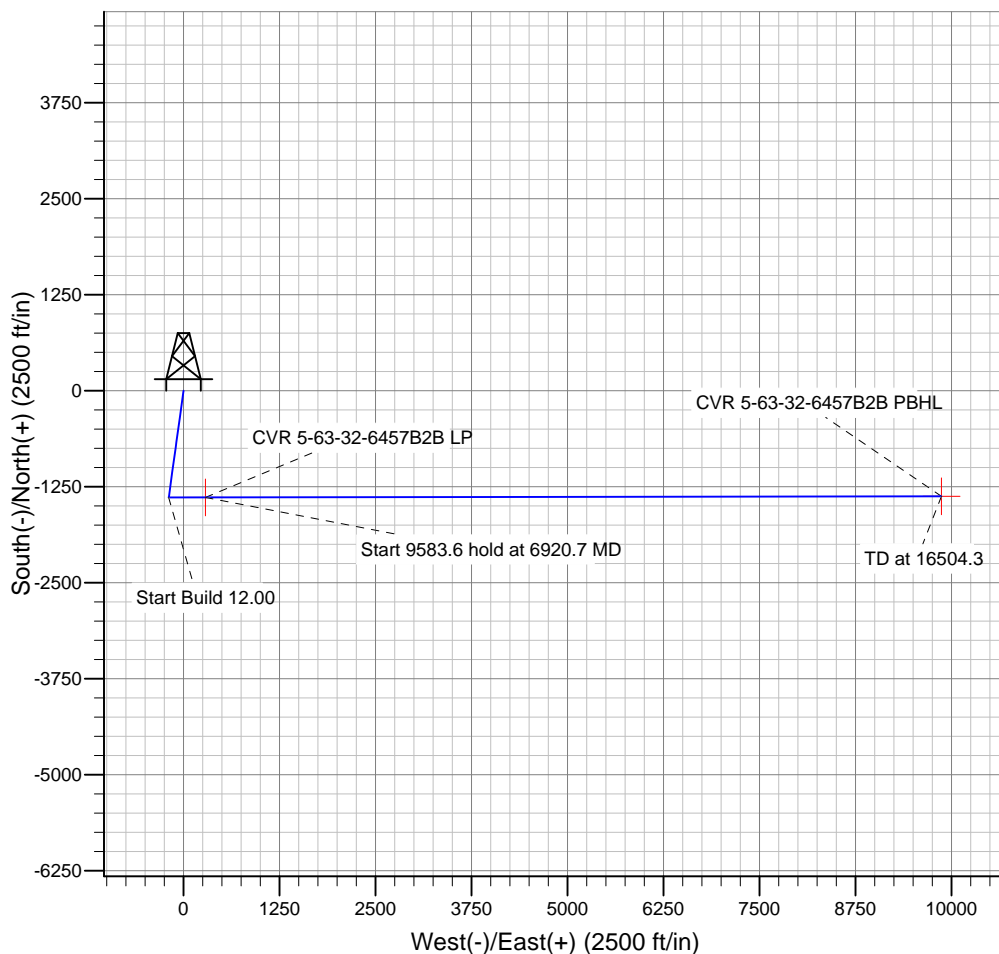
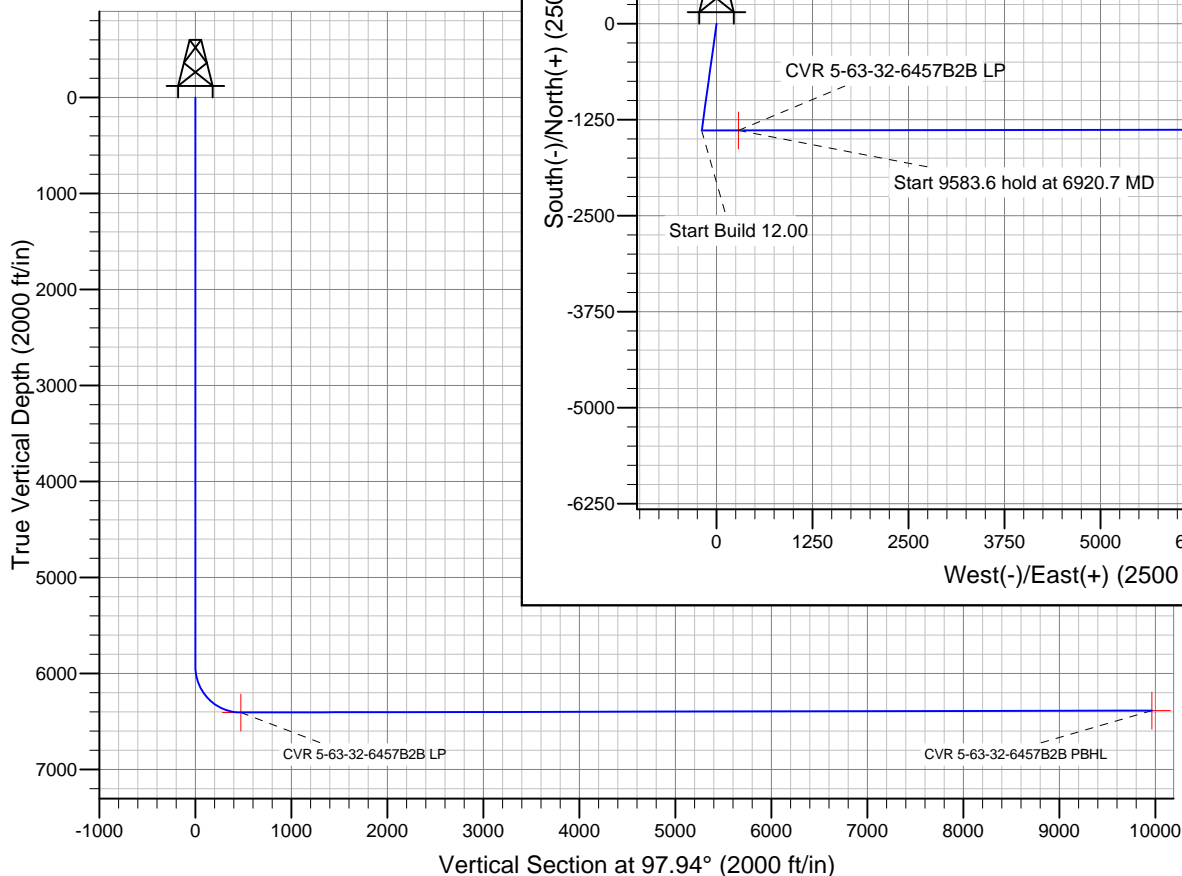
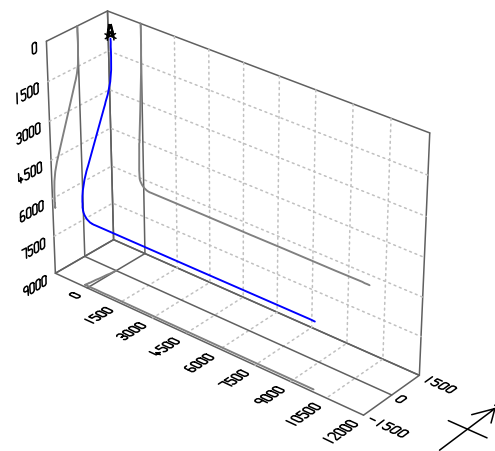
Name	TVD	+N/-S	+E/-W	Shape
CVR 5-63-32-6457B2B PBHL	6388.0	-1376.1	9869.3	Point
CVR 5-63-32-6457B2B LP	6408.0	-1390.5	285.7	Point

PROJECT DETAILS: WELD COUNTY, COLORADO

Geodetic System: US State Plane 1983
Datum: North American Datum 1983
Ellipsoid: GRS 1980
Zone: Colorado Northern Zone

SECTION DETAILS

Sec	MD	Inc	Azi	TVD	+N/-S	+E/-W	DLeg	TFace	VSec	Target
1	0.0	0.00	0.00	0.0	0.0	0.0	0.00	0.00	0.0	
2	1000.0	0.00	0.00	1000.0	0.0	0.0	0.00	0.00	0.0	
3	2064.7	21.29	187.89	2040.4	-193.7	-26.8	2.00	187.89	0.2	
4	4855.0	21.29	187.89	4640.1	-1197.5	-165.9	0.00	0.00	1.0	
5	5919.7	0.00	89.91	5680.5	-1391.2	-192.8	2.00	180.00	1.2	
6	6169.7	0.00	89.91	5930.5	-1391.2	-192.8	0.00	89.91	1.2	
7	6920.7	90.12	89.91	6408.0	-1390.5	285.7	12.00	89.91	475.0	CVR 5-63-32-6457B2B LP
8	16504.3	90.12	89.91	6388.0	-1376.1	9869.3	0.00	0.00	9964.7	CVR 5-63-32-6457B2B PBHL



Azimuths to True North
Magnetic North: 8.22°

Magnetic Field
Strength: 52765.5snT
Dip Angle: 66.94°
Date: 12/31/2014
Model: IGRF2010

Bill Barrett Corp

Planning Report

Database:	Compass	Local Co-ordinate Reference:	Well CVR 5-63-32-6457B2B
Company:	BILL BARRETT CORP	TVD Reference:	KB @ 4597.0ft (Original Well Elev)
Project:	WELD COUNTY, COLORADO	MD Reference:	KB @ 4597.0ft (Original Well Elev)
Site:	CVR 5-63-32_33 Pad	North Reference:	True
Well:	CVR 5-63-32-6457B2B	Survey Calculation Method:	Minimum Curvature
Wellbore:	Wellbore #1		
Design:	Design #1		

Project	WELD COUNTY, COLORADO		
Map System:	US State Plane 1983	System Datum:	Mean Sea Level
Geo Datum:	North American Datum 1983		
Map Zone:	Colorado Northern Zone		

Site		CVR 5-63-32_33 Pad				
Site Position:		Northing:	1,373,018.00ft	Latitude:	40° 21' 9.889 N	
From:	Lat/Long	Easting:	3,287,443.19ft	Longitude:	104° 28' 7.039 W	
Position Uncertainty:		0.0 ft	Slot Radius:	"	Grid Convergence:	0.67 °

Well	CVR 5-63-32-6457B2B					
Well Position	+N-S	-90.0 ft	Northing:	1,372,928.04 ft	Latitude:	40° 21' 9.000 N
	+E-W	1.4 ft	Easting:	3,287,445.63 ft	Longitude:	104° 28' 7.021 W
Position Uncertainty		0.0 ft	Wellhead Elevation:	ft	Ground Level:	4,581.0ft

Wellbore	Wellbore #1				
Magnetics	Model Name	Sample Date	Declination (°)	Dip Angle (°)	Field Strength (nT)
	IGRF2010	12/31/2014	8.22	66.94	52,765

Design	Design #1			
Audit Notes:				
Version:	Phase:	PLAN	Tie On Depth:	0.0
Vertical Section:	Depth From (TVD) (ft)	+N/-S (ft)	+E/-W (ft)	Direction (°)
	0.0	0.0	0.0	97.94

Plan Sections										
Measured Depth (ft)	Inclination (°)	Azimuth (°)	Vertical Depth (ft)	+N/-S (ft)	+E/-W (ft)	Dogleg Rate (°/100ft)	Build Rate (°/100ft)	Turn Rate (°/100ft)	TFO (°)	Target
0.0	0.00	0.00	0.0	0.0	0.0	0.00	0.00	0.00	0.00	
1,000.0	0.00	0.00	1,000.0	0.0	0.0	0.00	0.00	0.00	0.00	
2,064.7	21.29	187.89	2,040.4	-193.7	-26.8	2.00	2.00	0.00	187.89	
4,855.0	21.29	187.89	4,640.1	-1,197.5	-165.9	0.00	0.00	0.00	0.00	
5,919.7	0.00	89.91	5,680.5	-1,391.2	-192.8	2.00	-2.00	0.00	180.00	
6,169.7	0.00	89.91	5,930.5	-1,391.2	-192.8	0.00	0.00	0.00	89.91	
6,920.7	90.12	89.91	6,408.0	-1,390.5	285.7	12.00	12.00	0.00	89.91	CVR 5-63-32-6457B2B
16,504.3	90.12	89.91	6,388.0	-1,376.1	9,869.3	0.00	0.00	0.00	0.00	CVR 5-63-32-6457B2B

Bill Barrett Corp

Planning Report

Database:	Compass	Local Co-ordinate Reference:	Well CVR 5-63-32-6457B2B
Company:	BILL BARRETT CORP	TVD Reference:	KB @ 4597.0ft (Original Well Elev)
Project:	WELD COUNTY, COLORADO	MD Reference:	KB @ 4597.0ft (Original Well Elev)
Site:	CVR 5-63-32_33 Pad	North Reference:	True
Well:	CVR 5-63-32-6457B2B	Survey Calculation Method:	Minimum Curvature
Wellbore:	Wellbore #1		
Design:	Design #1		

Planned Survey									
Measured Depth (ft)	Inclination (°)	Azimuth (°)	Vertical Depth (ft)	+N/-S (ft)	+E/-W (ft)	Vertical Section (ft)	Dogleg Rate (°/100ft)	Build Rate (°/100ft)	Turn Rate (°/100ft)
0.0	0.00	0.00	0.0	0.0	0.0	0.0	0.00	0.00	0.00
100.0	0.00	0.00	100.0	0.0	0.0	0.0	0.00	0.00	0.00
200.0	0.00	0.00	200.0	0.0	0.0	0.0	0.00	0.00	0.00
300.0	0.00	0.00	300.0	0.0	0.0	0.0	0.00	0.00	0.00
400.0	0.00	0.00	400.0	0.0	0.0	0.0	0.00	0.00	0.00
500.0	0.00	0.00	500.0	0.0	0.0	0.0	0.00	0.00	0.00
600.0	0.00	0.00	600.0	0.0	0.0	0.0	0.00	0.00	0.00
700.0	0.00	0.00	700.0	0.0	0.0	0.0	0.00	0.00	0.00
800.0	0.00	0.00	800.0	0.0	0.0	0.0	0.00	0.00	0.00
900.0	0.00	0.00	900.0	0.0	0.0	0.0	0.00	0.00	0.00
1,000.0	0.00	0.00	1,000.0	0.0	0.0	0.0	0.00	0.00	0.00
1,100.0	2.00	187.89	1,100.0	-1.7	-0.2	0.0	2.00	2.00	0.00
1,200.0	4.00	187.89	1,199.8	-6.9	-1.0	0.0	2.00	2.00	0.00
1,300.0	6.00	187.89	1,299.5	-15.5	-2.2	0.0	2.00	2.00	0.00
1,400.0	8.00	187.89	1,398.7	-27.6	-3.8	0.0	2.00	2.00	0.00
1,500.0	10.00	187.89	1,497.5	-43.1	-6.0	0.0	2.00	2.00	0.00
1,600.0	12.00	187.89	1,595.6	-62.0	-8.6	0.1	2.00	2.00	0.00
1,700.0	14.00	187.89	1,693.1	-84.3	-11.7	0.1	2.00	2.00	0.00
1,800.0	16.00	187.89	1,789.6	-109.9	-15.2	0.1	2.00	2.00	0.00
1,900.0	18.00	187.89	1,885.3	-138.9	-19.2	0.1	2.00	2.00	0.00
2,000.0	20.00	187.89	1,979.8	-171.1	-23.7	0.1	2.00	2.00	0.00
2,064.7	21.29	187.89	2,040.4	-193.7	-26.8	0.2	2.00	2.00	0.00
2,100.0	21.29	187.89	2,073.2	-206.4	-28.6	0.2	0.00	0.00	0.00
2,200.0	21.29	187.89	2,166.4	-242.4	-33.6	0.2	0.00	0.00	0.00
2,300.0	21.29	187.89	2,259.6	-278.4	-38.6	0.2	0.00	0.00	0.00
2,400.0	21.29	187.89	2,352.8	-314.3	-43.6	0.3	0.00	0.00	0.00
2,500.0	21.29	187.89	2,445.9	-350.3	-48.5	0.3	0.00	0.00	0.00
2,600.0	21.29	187.89	2,539.1	-386.3	-53.5	0.3	0.00	0.00	0.00
2,700.0	21.29	187.89	2,632.3	-422.3	-58.5	0.4	0.00	0.00	0.00
2,800.0	21.29	187.89	2,725.5	-458.2	-63.5	0.4	0.00	0.00	0.00
2,900.0	21.29	187.89	2,818.6	-494.2	-68.5	0.4	0.00	0.00	0.00
3,000.0	21.29	187.89	2,911.8	-530.2	-73.5	0.5	0.00	0.00	0.00
3,100.0	21.29	187.89	3,005.0	-566.2	-78.4	0.5	0.00	0.00	0.00
3,200.0	21.29	187.89	3,098.1	-602.1	-83.4	0.5	0.00	0.00	0.00
3,300.0	21.29	187.89	3,191.3	-638.1	-88.4	0.6	0.00	0.00	0.00
3,400.0	21.29	187.89	3,284.5	-674.1	-93.4	0.6	0.00	0.00	0.00
3,500.0	21.29	187.89	3,377.7	-710.0	-98.4	0.6	0.00	0.00	0.00
3,600.0	21.29	187.89	3,470.8	-746.0	-103.4	0.6	0.00	0.00	0.00
3,700.0	21.29	187.89	3,564.0	-782.0	-108.4	0.7	0.00	0.00	0.00
3,800.0	21.29	187.89	3,657.2	-818.0	-113.3	0.7	0.00	0.00	0.00
3,900.0	21.29	187.89	3,750.4	-853.9	-118.3	0.7	0.00	0.00	0.00
4,000.0	21.29	187.89	3,843.5	-889.9	-123.3	0.8	0.00	0.00	0.00
4,100.0	21.29	187.89	3,936.7	-925.9	-128.3	0.8	0.00	0.00	0.00
4,200.0	21.29	187.89	4,029.9	-961.9	-133.3	0.8	0.00	0.00	0.00
4,300.0	21.29	187.89	4,123.0	-997.8	-138.3	0.9	0.00	0.00	0.00
4,400.0	21.29	187.89	4,216.2	-1,033.8	-143.2	0.9	0.00	0.00	0.00
4,500.0	21.29	187.89	4,309.4	-1,069.8	-148.2	0.9	0.00	0.00	0.00
4,600.0	21.29	187.89	4,402.6	-1,105.7	-153.2	1.0	0.00	0.00	0.00
4,700.0	21.29	187.89	4,495.7	-1,141.7	-158.2	1.0	0.00	0.00	0.00
4,800.0	21.29	187.89	4,588.9	-1,177.7	-163.2	1.0	0.00	0.00	0.00
4,855.0	21.29	187.89	4,640.1	-1,197.5	-165.9	1.0	0.00	0.00	0.00
4,900.0	20.39	187.89	4,682.2	-1,213.3	-168.1	1.1	2.00	-2.00	0.00
5,000.0	18.39	187.89	4,776.5	-1,246.2	-172.7	1.1	2.00	-2.00	0.00
5,100.0	16.39	187.89	4,871.9	-1,275.8	-176.8	1.1	2.00	-2.00	0.00

Bill Barrett Corp

Planning Report

Database:	Compass	Local Co-ordinate Reference:	Well CVR 5-63-32-6457B2B
Company:	BILL BARRETT CORP	TVD Reference:	KB @ 4597.0ft (Original Well Elev)
Project:	WELD COUNTY, COLORADO	MD Reference:	KB @ 4597.0ft (Original Well Elev)
Site:	CVR 5-63-32_33 Pad	North Reference:	True
Well:	CVR 5-63-32-6457B2B	Survey Calculation Method:	Minimum Curvature
Wellbore:	Wellbore #1		
Design:	Design #1		

Planned Survey									
Measured Depth (ft)	Inclination (°)	Azimuth (°)	Vertical Depth (ft)	+N/-S (ft)	+E/-W (ft)	Vertical Section (ft)	Dogleg Rate (°/100ft)	Build Rate (°/100ft)	Turn Rate (°/100ft)
5,200.0	14.39	187.89	4,968.4	-1,302.1	-180.4	1.1	2.00	-2.00	0.00
5,300.0	12.39	187.89	5,065.6	-1,325.1	-183.6	1.1	2.00	-2.00	0.00
5,400.0	10.39	187.89	5,163.7	-1,344.6	-186.3	1.2	2.00	-2.00	0.00
5,500.0	8.39	187.89	5,262.3	-1,360.8	-188.6	1.2	2.00	-2.00	0.00
5,600.0	6.39	187.89	5,361.5	-1,373.6	-190.3	1.2	2.00	-2.00	0.00
5,700.0	4.39	187.89	5,461.0	-1,382.9	-191.6	1.2	2.00	-2.00	0.00
5,800.0	2.39	187.89	5,560.8	-1,388.7	-192.4	1.2	2.00	-2.00	0.00
5,900.0	0.39	187.89	5,660.8	-1,391.1	-192.8	1.2	2.00	-2.00	0.00
5,919.7	0.00	89.91	5,680.5	-1,391.2	-192.8	1.2	2.00	-2.00	0.00
6,000.0	0.00	89.91	5,760.8	-1,391.2	-192.8	1.2	0.00	0.00	0.00
6,100.0	0.00	89.91	5,860.8	-1,391.2	-192.8	1.2	0.00	0.00	0.00
6,169.7	0.00	89.91	5,930.5	-1,391.2	-192.8	1.2	0.00	0.00	0.00
6,200.0	3.63	89.91	5,960.8	-1,391.2	-191.8	2.2	12.00	12.00	0.00
6,300.0	15.63	89.91	6,059.2	-1,391.2	-175.1	18.7	12.00	12.00	0.00
6,400.0	27.63	89.91	6,152.0	-1,391.1	-138.3	55.1	12.00	12.00	0.00
6,500.0	39.63	89.91	6,235.1	-1,391.1	-83.0	109.9	12.00	12.00	0.00
6,600.0	51.63	89.91	6,304.9	-1,390.9	-11.7	180.5	12.00	12.00	0.00
6,700.0	63.63	89.91	6,358.3	-1,390.8	72.6	264.0	12.00	12.00	0.00
6,800.0	75.63	89.91	6,393.1	-1,390.7	166.2	356.7	12.00	12.00	0.00
6,900.0	87.63	89.91	6,407.6	-1,390.5	265.0	454.5	12.00	12.00	0.00
6,920.7	90.12	89.91	6,408.0	-1,390.5	285.7	475.0	12.00	12.00	0.00
CVR 5-63-32-6457B2B LP									
7,000.0	90.12	89.91	6,407.8	-1,390.4	365.0	553.5	0.00	0.00	0.00
7,100.0	90.12	89.91	6,407.6	-1,390.2	465.0	652.5	0.00	0.00	0.00
7,200.0	90.12	89.91	6,407.4	-1,390.1	565.0	751.5	0.00	0.00	0.00
7,300.0	90.12	89.91	6,407.2	-1,389.9	665.0	850.5	0.00	0.00	0.00
7,400.0	90.12	89.91	6,407.0	-1,389.8	765.0	949.6	0.00	0.00	0.00
7,500.0	90.12	89.91	6,406.8	-1,389.6	865.0	1,048.6	0.00	0.00	0.00
7,600.0	90.12	89.91	6,406.6	-1,389.5	965.0	1,147.6	0.00	0.00	0.00
7,700.0	90.12	89.91	6,406.4	-1,389.3	1,065.0	1,246.6	0.00	0.00	0.00
7,800.0	90.12	89.91	6,406.2	-1,389.2	1,165.0	1,345.6	0.00	0.00	0.00
7,900.0	90.12	89.91	6,406.0	-1,389.0	1,265.0	1,444.7	0.00	0.00	0.00
8,000.0	90.12	89.91	6,405.7	-1,388.9	1,365.0	1,543.7	0.00	0.00	0.00
8,100.0	90.12	89.91	6,405.5	-1,388.7	1,465.0	1,642.7	0.00	0.00	0.00
8,200.0	90.12	89.91	6,405.3	-1,388.6	1,565.0	1,741.7	0.00	0.00	0.00
8,300.0	90.12	89.91	6,405.1	-1,388.4	1,665.0	1,840.8	0.00	0.00	0.00
8,400.0	90.12	89.91	6,404.9	-1,388.3	1,765.0	1,939.8	0.00	0.00	0.00
8,500.0	90.12	89.91	6,404.7	-1,388.1	1,865.0	2,038.8	0.00	0.00	0.00
8,600.0	90.12	89.91	6,404.5	-1,388.0	1,965.0	2,137.8	0.00	0.00	0.00
8,700.0	90.12	89.91	6,404.3	-1,387.8	2,065.0	2,236.8	0.00	0.00	0.00
8,800.0	90.12	89.91	6,404.1	-1,387.7	2,165.0	2,335.9	0.00	0.00	0.00
8,900.0	90.12	89.91	6,403.9	-1,387.5	2,265.0	2,434.9	0.00	0.00	0.00
9,000.0	90.12	89.91	6,403.7	-1,387.4	2,365.0	2,533.9	0.00	0.00	0.00
9,100.0	90.12	89.91	6,403.5	-1,387.2	2,465.0	2,632.9	0.00	0.00	0.00
9,200.0	90.12	89.91	6,403.2	-1,387.1	2,565.0	2,731.9	0.00	0.00	0.00
9,300.0	90.12	89.91	6,403.0	-1,386.9	2,665.0	2,831.0	0.00	0.00	0.00
9,400.0	90.12	89.91	6,402.8	-1,386.8	2,765.0	2,930.0	0.00	0.00	0.00
9,500.0	90.12	89.91	6,402.6	-1,386.6	2,865.0	3,029.0	0.00	0.00	0.00
9,600.0	90.12	89.91	6,402.4	-1,386.5	2,965.0	3,128.0	0.00	0.00	0.00
9,700.0	90.12	89.91	6,402.2	-1,386.3	3,065.0	3,227.0	0.00	0.00	0.00
9,800.0	90.12	89.91	6,402.0	-1,386.2	3,165.0	3,326.1	0.00	0.00	0.00
9,900.0	90.12	89.91	6,401.8	-1,386.0	3,265.0	3,425.1	0.00	0.00	0.00
10,000.0	90.12	89.91	6,401.6	-1,385.9	3,365.0	3,524.1	0.00	0.00	0.00

Bill Barrett Corp

Planning Report

Database:	Compass	Local Co-ordinate Reference:	Well CVR 5-63-32-6457B2B
Company:	BILL BARRETT CORP	TVD Reference:	KB @ 4597.0ft (Original Well Elev)
Project:	WELD COUNTY, COLORADO	MD Reference:	KB @ 4597.0ft (Original Well Elev)
Site:	CVR 5-63-32_33 Pad	North Reference:	True
Well:	CVR 5-63-32-6457B2B	Survey Calculation Method:	Minimum Curvature
Wellbore:	Wellbore #1		
Design:	Design #1		

Planned Survey									
Measured Depth (ft)	Inclination (°)	Azimuth (°)	Vertical Depth (ft)	+N/-S (ft)	+E/-W (ft)	Vertical Section (ft)	Dogleg Rate (°/100ft)	Build Rate (°/100ft)	Turn Rate (°/100ft)
10,100.0	90.12	89.91	6,401.4	-1,385.7	3,465.0	3,623.1	0.00	0.00	0.00
10,200.0	90.12	89.91	6,401.2	-1,385.6	3,565.0	3,722.1	0.00	0.00	0.00
10,300.0	90.12	89.91	6,400.9	-1,385.4	3,665.0	3,821.2	0.00	0.00	0.00
10,400.0	90.12	89.91	6,400.7	-1,385.3	3,765.0	3,920.2	0.00	0.00	0.00
10,500.0	90.12	89.91	6,400.5	-1,385.1	3,865.0	4,019.2	0.00	0.00	0.00
10,600.0	90.12	89.91	6,400.3	-1,385.0	3,965.0	4,118.2	0.00	0.00	0.00
10,700.0	90.12	89.91	6,400.1	-1,384.8	4,065.0	4,217.3	0.00	0.00	0.00
10,800.0	90.12	89.91	6,399.9	-1,384.7	4,165.0	4,316.3	0.00	0.00	0.00
10,900.0	90.12	89.91	6,399.7	-1,384.5	4,265.0	4,415.3	0.00	0.00	0.00
11,000.0	90.12	89.91	6,399.5	-1,384.4	4,365.0	4,514.3	0.00	0.00	0.00
11,100.0	90.12	89.91	6,399.3	-1,384.2	4,465.0	4,613.3	0.00	0.00	0.00
11,200.0	90.12	89.91	6,399.1	-1,384.1	4,565.0	4,712.4	0.00	0.00	0.00
11,300.0	90.12	89.91	6,398.9	-1,383.9	4,665.0	4,811.4	0.00	0.00	0.00
11,400.0	90.12	89.91	6,398.7	-1,383.8	4,765.0	4,910.4	0.00	0.00	0.00
11,500.0	90.12	89.91	6,398.4	-1,383.6	4,864.9	5,009.4	0.00	0.00	0.00
11,600.0	90.12	89.91	6,398.2	-1,383.5	4,964.9	5,108.4	0.00	0.00	0.00
11,700.0	90.12	89.91	6,398.0	-1,383.3	5,064.9	5,207.5	0.00	0.00	0.00
11,800.0	90.12	89.91	6,397.8	-1,383.2	5,164.9	5,306.5	0.00	0.00	0.00
11,900.0	90.12	89.91	6,397.6	-1,383.0	5,264.9	5,405.5	0.00	0.00	0.00
12,000.0	90.12	89.91	6,397.4	-1,382.9	5,364.9	5,504.5	0.00	0.00	0.00
12,100.0	90.12	89.91	6,397.2	-1,382.7	5,464.9	5,603.5	0.00	0.00	0.00
12,200.0	90.12	89.91	6,397.0	-1,382.6	5,564.9	5,702.6	0.00	0.00	0.00
12,300.0	90.12	89.91	6,396.8	-1,382.4	5,664.9	5,801.6	0.00	0.00	0.00
12,400.0	90.12	89.91	6,396.6	-1,382.3	5,764.9	5,900.6	0.00	0.00	0.00
12,500.0	90.12	89.91	6,396.4	-1,382.1	5,864.9	5,999.6	0.00	0.00	0.00
12,600.0	90.12	89.91	6,396.1	-1,382.0	5,964.9	6,098.6	0.00	0.00	0.00
12,700.0	90.12	89.91	6,395.9	-1,381.8	6,064.9	6,197.7	0.00	0.00	0.00
12,800.0	90.12	89.91	6,395.7	-1,381.7	6,164.9	6,296.7	0.00	0.00	0.00
12,900.0	90.12	89.91	6,395.5	-1,381.5	6,264.9	6,395.7	0.00	0.00	0.00
13,000.0	90.12	89.91	6,395.3	-1,381.4	6,364.9	6,494.7	0.00	0.00	0.00
13,100.0	90.12	89.91	6,395.1	-1,381.2	6,464.9	6,593.7	0.00	0.00	0.00
13,200.0	90.12	89.91	6,394.9	-1,381.1	6,564.9	6,692.8	0.00	0.00	0.00
13,300.0	90.12	89.91	6,394.7	-1,380.9	6,664.9	6,791.8	0.00	0.00	0.00
13,400.0	90.12	89.91	6,394.5	-1,380.8	6,764.9	6,890.8	0.00	0.00	0.00
13,500.0	90.12	89.91	6,394.3	-1,380.6	6,864.9	6,989.8	0.00	0.00	0.00
13,600.0	90.12	89.91	6,394.1	-1,380.5	6,964.9	7,088.9	0.00	0.00	0.00
13,700.0	90.12	89.91	6,393.9	-1,380.3	7,064.9	7,187.9	0.00	0.00	0.00
13,800.0	90.12	89.91	6,393.6	-1,380.2	7,164.9	7,286.9	0.00	0.00	0.00
13,900.0	90.12	89.91	6,393.4	-1,380.0	7,264.9	7,385.9	0.00	0.00	0.00
14,000.0	90.12	89.91	6,393.2	-1,379.9	7,364.9	7,484.9	0.00	0.00	0.00
14,100.0	90.12	89.91	6,393.0	-1,379.7	7,464.9	7,584.0	0.00	0.00	0.00
14,200.0	90.12	89.91	6,392.8	-1,379.6	7,564.9	7,683.0	0.00	0.00	0.00
14,300.0	90.12	89.91	6,392.6	-1,379.4	7,664.9	7,782.0	0.00	0.00	0.00
14,400.0	90.12	89.91	6,392.4	-1,379.3	7,764.9	7,881.0	0.00	0.00	0.00
14,500.0	90.12	89.91	6,392.2	-1,379.1	7,864.9	7,980.0	0.00	0.00	0.00
14,600.0	90.12	89.91	6,392.0	-1,379.0	7,964.9	8,079.1	0.00	0.00	0.00
14,700.0	90.12	89.91	6,391.8	-1,378.8	8,064.9	8,178.1	0.00	0.00	0.00
14,800.0	90.12	89.91	6,391.6	-1,378.7	8,164.9	8,277.1	0.00	0.00	0.00
14,900.0	90.12	89.91	6,391.3	-1,378.5	8,264.9	8,376.1	0.00	0.00	0.00
15,000.0	90.12	89.91	6,391.1	-1,378.4	8,364.9	8,475.1	0.00	0.00	0.00
15,100.0	90.12	89.91	6,390.9	-1,378.2	8,464.9	8,574.2	0.00	0.00	0.00
15,200.0	90.12	89.91	6,390.7	-1,378.1	8,564.9	8,673.2	0.00	0.00	0.00
15,300.0	90.12	89.91	6,390.5	-1,377.9	8,664.9	8,772.2	0.00	0.00	0.00
15,400.0	90.12	89.91	6,390.3	-1,377.8	8,764.9	8,871.2	0.00	0.00	0.00

Bill Barrett Corp

Planning Report

Database:	Compass	Local Co-ordinate Reference:	Well CVR 5-63-32-6457B2B
Company:	BILL BARRETT CORP	TVD Reference:	KB @ 4597.0ft (Original Well Elev)
Project:	WELD COUNTY, COLORADO	MD Reference:	KB @ 4597.0ft (Original Well Elev)
Site:	CVR 5-63-32_33 Pad	North Reference:	True
Well:	CVR 5-63-32-6457B2B	Survey Calculation Method:	Minimum Curvature
Wellbore:	Wellbore #1		
Design:	Design #1		

Planned Survey										
Measured Depth (ft)	Inclination (°)	Azimuth (°)	Vertical Depth (ft)	+N/-S (ft)	+E/-W (ft)	Vertical Section (ft)	Dogleg Rate (°/100ft)	Build Rate (°/100ft)	Turn Rate (°/100ft)	
15,500.0	90.12	89.91	6,390.1	-1,377.6	8,864.9	8,970.2	0.00	0.00	0.00	
15,600.0	90.12	89.91	6,389.9	-1,377.5	8,964.9	9,069.3	0.00	0.00	0.00	
15,700.0	90.12	89.91	6,389.7	-1,377.3	9,064.9	9,168.3	0.00	0.00	0.00	
15,800.0	90.12	89.91	6,389.5	-1,377.2	9,164.9	9,267.3	0.00	0.00	0.00	
15,900.0	90.12	89.91	6,389.3	-1,377.1	9,264.9	9,366.3	0.00	0.00	0.00	
16,000.0	90.12	89.91	6,389.1	-1,376.9	9,364.9	9,465.4	0.00	0.00	0.00	
16,100.0	90.12	89.91	6,388.8	-1,376.8	9,464.9	9,564.4	0.00	0.00	0.00	
16,200.0	90.12	89.91	6,388.6	-1,376.6	9,564.9	9,663.4	0.00	0.00	0.00	
16,300.0	90.12	89.91	6,388.4	-1,376.5	9,664.9	9,762.4	0.00	0.00	0.00	
16,400.0	90.12	89.91	6,388.2	-1,376.3	9,764.9	9,861.4	0.00	0.00	0.00	
16,500.0	90.12	89.91	6,388.0	-1,376.2	9,864.9	9,960.5	0.00	0.00	0.00	
16,504.3	90.12	89.91	6,388.0	-1,376.1	9,869.3	9,964.7	0.00	0.00	0.00	
CVR 5-63-32-6457B2B PBHL										