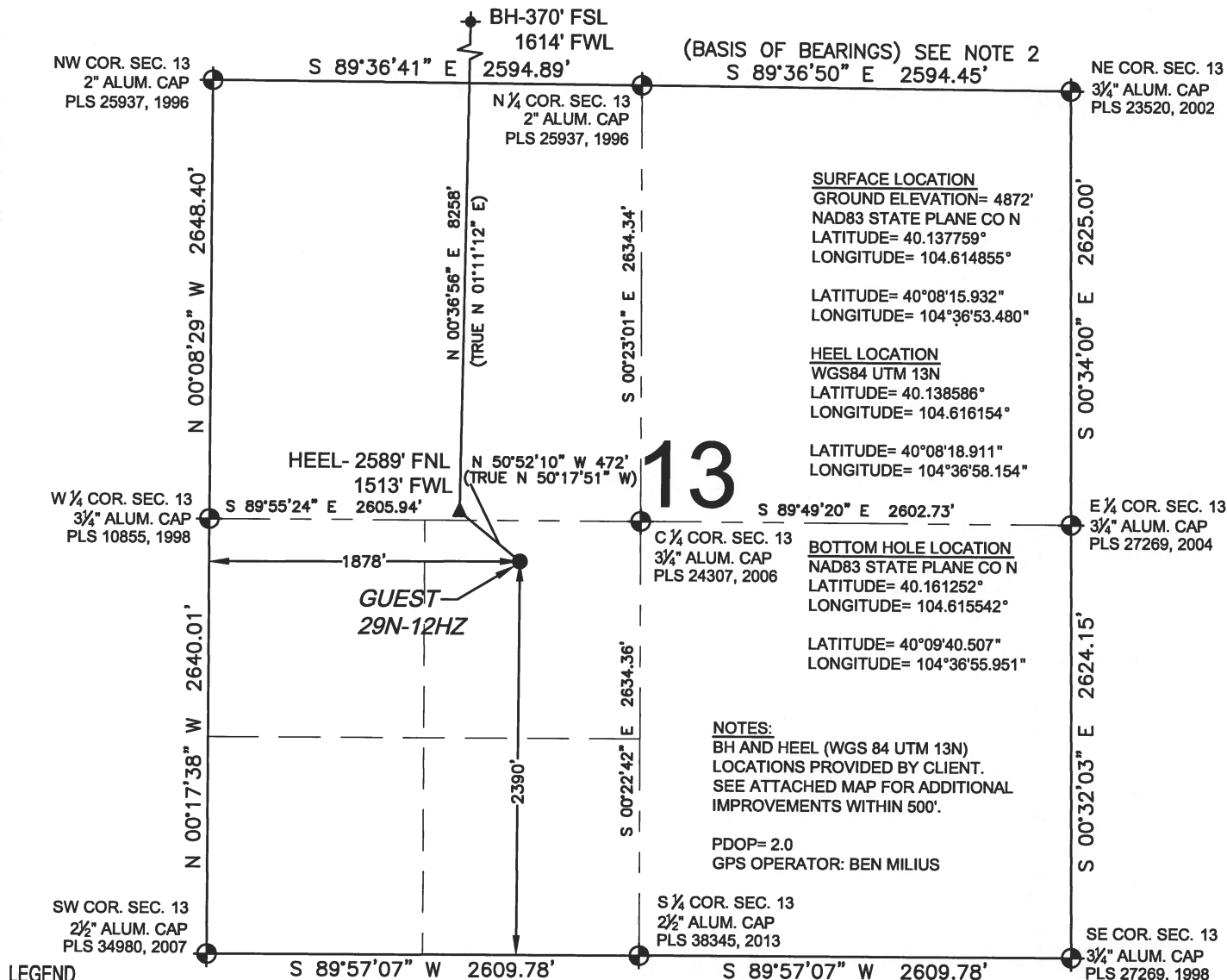


# WELL LOCATION CERTIFICATE: GUEST 29N-12HZ

SECTION 13, TOWNSHIP 2 NORTH, RANGE 65 WEST, 6TH P.M.



**SURFACE LOCATION**  
 GROUND ELEVATION= 4872'  
 NAD83 STATE PLANE CO N  
 LATITUDE= 40.137759°  
 LONGITUDE= 104.614855°

LATITUDE= 40°08'15.932"  
 LONGITUDE= 104°36'53.480"

**HEEL LOCATION**  
 WGS84 UTM 13N  
 LATITUDE= 40.138586°  
 LONGITUDE= 104.616154°

LATITUDE= 40°08'18.911"  
 LONGITUDE= 104°36'58.154"

**BOTTOM HOLE LOCATION**  
 NAD83 STATE PLANE CO N  
 LATITUDE= 40.161252°  
 LONGITUDE= 104.615542°

LATITUDE= 40°09'40.507"  
 LONGITUDE= 104°36'55.951"

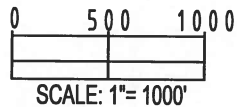
# 13

**NOTES:**  
 BH AND HEEL (WGS 84 UTM 13N)  
 LOCATIONS PROVIDED BY CLIENT.  
 SEE ATTACHED MAP FOR ADDITIONAL  
 IMPROVEMENTS WITHIN 500'.

PDOP= 2.0  
 GPS OPERATOR: BEN MILIUS

- LEGEND**
- ⊕ = EXISTING MONUMENT
  - = PROPOSED WELL
  - BH = BOTTOM HOLE
  - ⬤ = BOTTOM HOLE
  - ▲ = HEEL LOCATION
  - = CALCULATED POSITION

**WELL GUEST 29N-12HZ TO BE LOCATED**  
 2390' FSL AND 1878' FWL



- NOTES:**
- THIS FIELD SURVEY CONFORMS TO THE MINIMUM STANDARDS SET BY THE C.O.G.C.C., RULE NO. 215
  - BEARINGS ARE BASED ON THE ASSUMPTION THAT THE NORTH LINE OF THE NORTHEAST QUARTER OF SECTION 13, BEARS S89°36'50"E BETWEEN THE MONUMENTS DESCRIBED HEREON.
  - GRID DISTANCES ARE SHOWN, AS MEASURED IN THE FIELD, WITH TIES TO WELLS MEASURED PERPENDICULAR TO SECTION LINES. TO GET GROUND DISTANCES MULTIPLY THE SHOWN DISTANCE BY 1.000272228.
  - ALL LINES SHOWN THAT ARE WITHOUT DIMENSION SHOULD BE CONSIDERED SCALED AND ONLY REPRESENT A GRAPHICAL DEPICTION OF THE APPROXIMATE LOCATION OF SAID LINE.
  - CERTIFIED OCTOBER 18, 2014 FOR WELLS STAKED ON OCTOBER 3, 2014. SECOND REVISION DECEMBER 7, 2016 FOR BHL CHANGES AND ADDITION OF SECTION 1. CORNERS ON THE EAST LINE OF SECTIN 1 ARE CALCULATED DUE TO ROAD CONSTRUCTION AND WILL BE RESET BY THAT SURVEYOR AFTER CONSTRUCTION.

I, JACOB S. FRISCH, A LICENSED PROFESSIONAL LAND SURVEYOR IN THE STATE OF COLORADO DO HEREBY CERTIFY TO **KERR-MCGEE OIL & GAS ONSHORE LP**, THAT THE SURVEY AND WELL LOCATION CERTIFICATE SHOWN HEREON WERE DONE BY ME OR UNDER MY DIRECT SUPERVISION AND THAT THE DRAWING SHOWN HEREON ACCURATELY DEPICTS THE PROPOSED LOCATION OF THE WELL. THIS CERTIFICATE DOES NOT REPRESENT A LAND SURVEY PLAT OR IMPROVEMENT SURVEY PLAT AS DEFINED BY C.R.S. 38-51-102 AND CANNOT BE RELIED UPON TO DETERMINE OWNERSHIP.

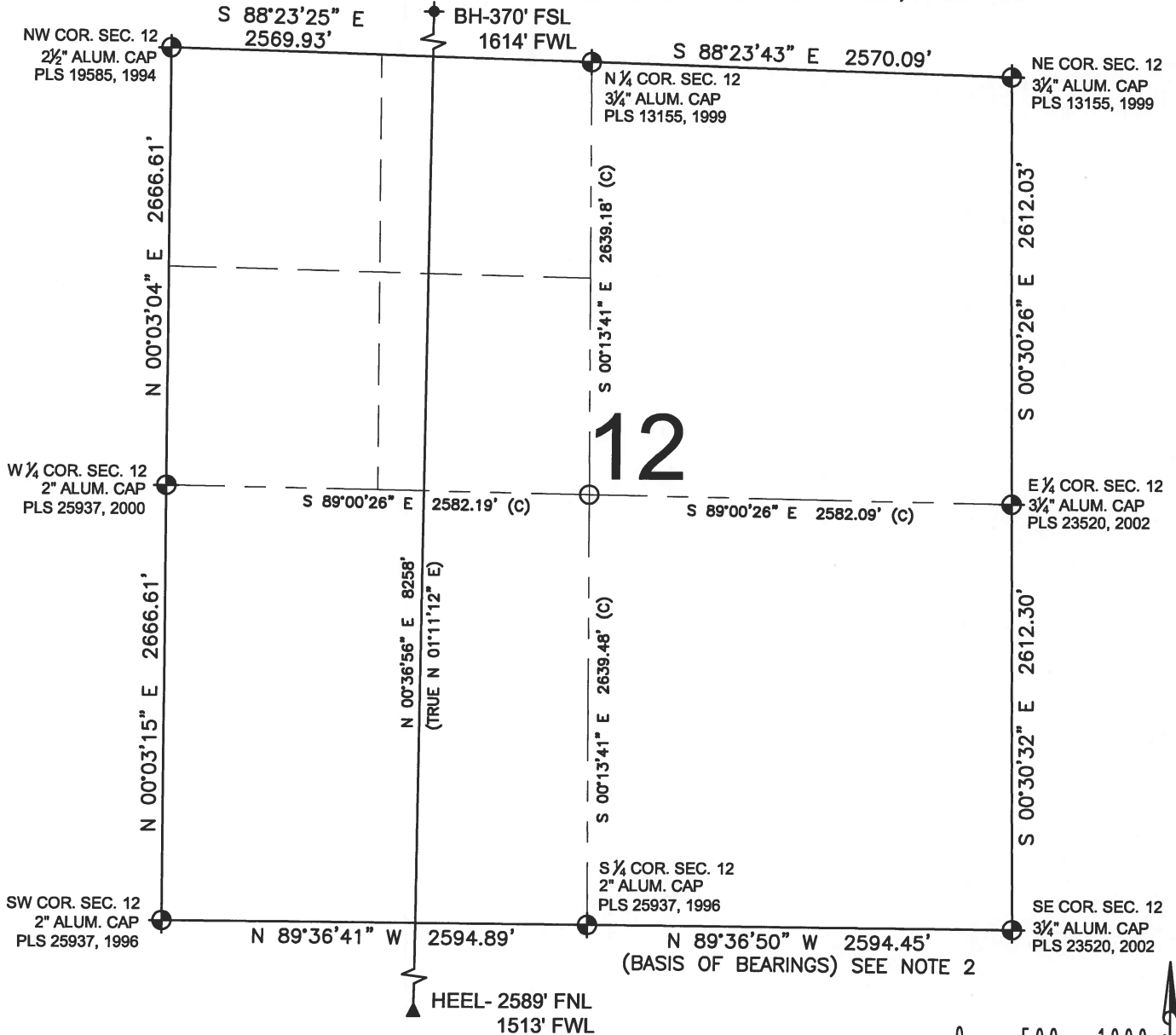


PREPARED BY:  PFS Petroleum Field Services, LLC 7535 Hilltop Circle Denver, CO 80221	FIELD DATE: 01-08-15	SURFACE LOCATION:
	DRAWING DATE: 11-30-16	NE 1/4 SW 1/4, SEC. 13, T2N, R65W, 6TH P.M.
	BY: BMO	CHECKED: MLP

**NOTICE:** ACCORDING TO COLORADO LAW YOU MUST COMMENCE ANY LEGAL ACTION BASED UPON ANY DEFECT IN THIS SURVEY WITHIN THREE YEARS AFTER YOU FIRST DISCOVER SUCH DEFECT. IN NO EVENT MAY ANY ACTION BASED UPON ANY DEFECT IN THIS SURVEY BE COMMENCED MORE THAN TEN YEARS FROM THIS SAID DATE OF THIS CERTIFICATION SHOWN HEREON.

# WELL LOCATION CERTIFICATE: GUEST 29N-12HZ

SECTION 12, TOWNSHIP 2 NORTH, RANGE 65 WEST, 6TH P.M.

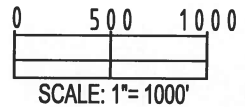


**NOTES:**

1. THIS FIELD SURVEY CONFORMS TO THE MINIMUM STANDARDS SET BY THE C.O.G.C.C., RULE NO. 215
2. BEARINGS ARE BASED ON THE ASSUMPTION THAT THE NORTH LINE OF THE NORTHEAST QUARTER OF SECTION 13, BEARS S89°36'50"E BETWEEN THE MONUMENTS DESCRIBED HEREON.
3. GRID DISTANCES ARE SHOWN, AS MEASURED IN THE FIELD, WITH TIES TO WELLS MEASURED PERPENDICULAR TO SECTION LINES. TO GET GROUND DISTANCES MULTIPLY THE SHOWN DISTANCE BY 1.000272228.
4. ALL LINES SHOWN THAT ARE WITHOUT DIMENSION SHOULD BE CONSIDERED SCALED AND ONLY REPRESENT A GRAPHICAL DEPICTION OF THE APPROXIMATE LOCATION OF SAID LINE.
5. CERTIFIED OCTOBER 18, 2014 FOR WELLS STAKED ON OCTOBER 3, 2014. SECOND REVISION DECEMBER 7, 2016 FOR BHL CHANGES AND ADDITION OF SECTION 1. CORNERS ON THE EAST LINE OF SECTION 1 ARE CALCULATED DUE TO ROAD CONSTRUCTION AND WILL BE RESET BY THAT SURVEYOR AFTER CONSTRUCTION

**LEGEND**

- ◆ = EXISTING MONUMENT
- = PROPOSED WELL
- BH = BOTTOM HOLE
- (C) = CALCULATED
- ◆ = BOTTOM HOLE
- ▲ = HEEL LOCATION
- = CALCULATED POSITION



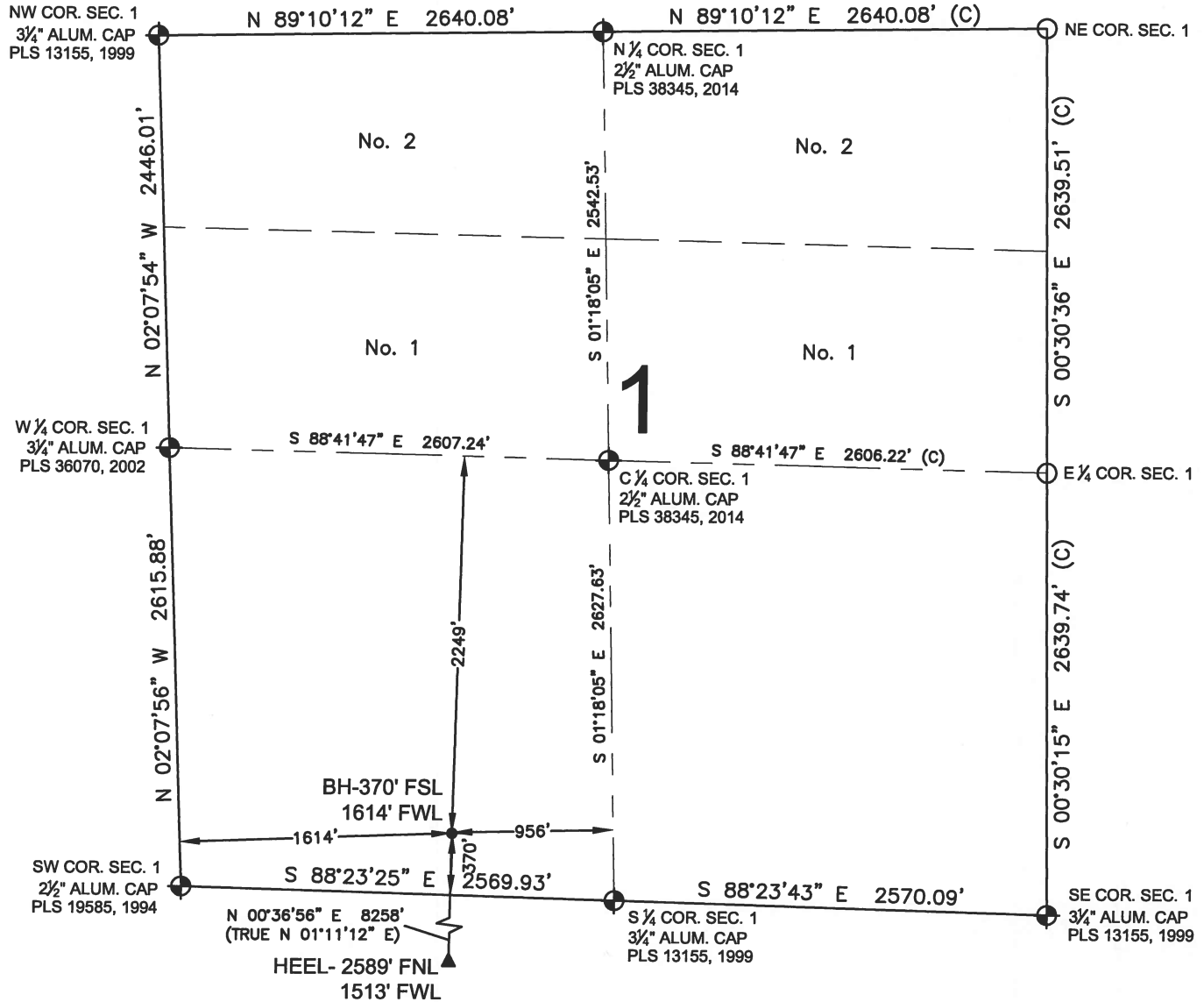
NOTICE: ACCORDING TO COLORADO LAW YOU MUST COMMENCE ANY LEGAL ACTION BASED UPON ANY DEFECT IN THIS SURVEY WITHIN THREE YEARS AFTER YOU FIRST DISCOVER SUCH DEFECT. IN NO EVENT MAY ANY ACTION BASED UPON ANY DEFECT IN THIS SURVEY BE COMMENCED MORE THAN TEN YEARS FROM THIS SAID DATE OF THIS CERTIFICATION SHOWN HEREON.

SHEET 2 OF 3

PREPARED BY: <b>PFS</b> Petroleum Field Services, LLC 7535 Hilltop Circle Denver, CO 80221	FIELD DATE: 01-08-15	SURFACE LOCATION: NE 1/4 SW 1/4, SEC. 13, T2N, R65W, 6TH P.M.
BY: BMO	DRAWING DATE: 11-30-16	WELD COUNTY, COLORADO
CHECKED: MLP		

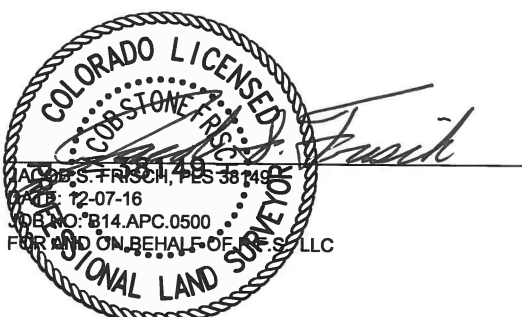
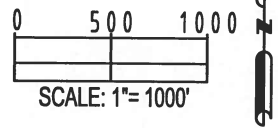
# WELL LOCATION CERTIFICATE: GUEST 29N-12HZ

SECTION 1, TOWNSHIP 2 NORTH, RANGE 65 WEST, 6TH P.M.



- NOTES:**
- THIS FIELD SURVEY CONFORMS TO THE MINIMUM STANDARDS SET BY THE C.O.G.C.C., RULE NO. 215
  - BEARINGS ARE BASED ON THE ASSUMPTION THAT THE NORTH LINE OF THE NORTHEAST QUARTER OF SECTION 13, BEARS S89°36'50"E BETWEEN THE MONUMENTS DESCRIBED HEREON.
  - GRID DISTANCES ARE SHOWN, AS MEASURED IN THE FIELD, WITH TIES TO WELLS MEASURED PERPENDICULAR TO SECTION LINES. TO GET GROUND DISTANCES MULTIPLY THE SHOWN DISTANCE BY 1.000272228.
  - ALL LINES SHOWN THAT ARE WITHOUT DIMENSION SHOULD BE CONSIDERED SCALED AND ONLY REPRESENT A GRAPHICAL DEPICTION OF THE APPROXIMATE LOCATION OF SAID LINE.
  - CERTIFIED OCTOBER 18, 2014 FOR WELLS STAKED ON OCTOBER 3, 2014. SECOND REVISION DECEMBER 7, 2016 FOR BHL CHANGES AND ADDITION OF SECTION 1. CORNERS ON THE EAST LINE OF SECTION 1 ARE CALCULATED DUE TO ROAD CONSTRUCTION AND WILL BE RESET BY THAT SURVEYOR AFTER CONSTRUCTION

- LEGEND**
- ◆ = EXISTING MONUMENT
  - = PROPOSED WELL
  - BH = BOTTOM HOLE
  - (C) = CALCULATED
  - ◆ = BOTTOM HOLE
  - ▲ = HEEL LOCATION
  - = CALCULATED POSITION



JACOB S. FRISCH, PLS 38149  
 EXP. DATE: 12-07-16  
 JOB NO.: B14.APC.0500  
 FOR AND ON BEHALF OF P.F.S. LLC

SHEET 3 OF 3

PREPARED BY:  Petroleum Field Services, LLC 7535 Hilltop Circle Denver, CO 80221	FIELD DATE: 01-08-15	SURFACE LOCATION: NE 1/4 SW 1/4,
	DRAWING DATE: 11-30-16	SEC. 13, T2N, R65W, 6TH P.M.
BY: BMO	CHECKED: MLP	WELD COUNTY, COLORADO

NOTICE: ACCORDING TO COLORADO LAW YOU MUST COMMENCE ANY LEGAL ACTION BASED UPON ANY DEFECT IN THIS SURVEY WITHIN THREE YEARS AFTER YOU FIRST DISCOVER SUCH DEFECT. IN NO EVENT MAY ANY ACTION BASED UPON ANY DEFECT IN THIS SURVEY BE COMMENCED MORE THAN TEN YEARS FROM THIS SAID DATE OF THIS CERTIFICATION SHOWN HEREON.