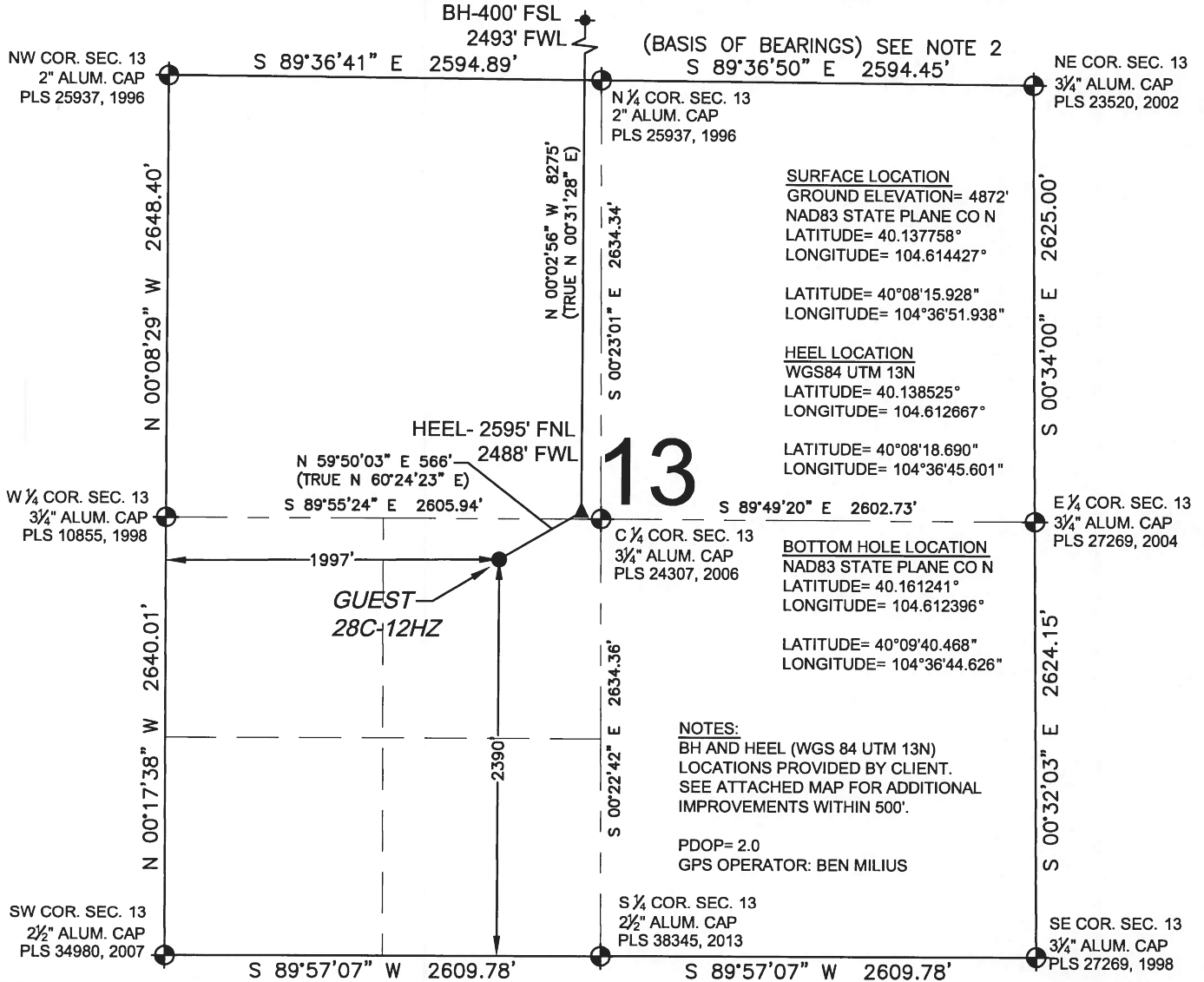


WELL LOCATION CERTIFICATE: GUEST 28C-12HZ

SECTION 13, TOWNSHIP 2 NORTH, RANGE 65 WEST, 6TH P.M.



SURFACE LOCATION
 GROUND ELEVATION= 4872'
 NAD83 STATE PLANE CO N
 LATITUDE= 40.137758°
 LONGITUDE= 104.614427°

LATITUDE= 40°08'15.928"
 LONGITUDE= 104°36'51.938"

HEEL LOCATION
 WGS84 UTM 13N
 LATITUDE= 40.138525°
 LONGITUDE= 104.612667°

LATITUDE= 40°08'18.690"
 LONGITUDE= 104°36'45.601"

BOTTOM HOLE LOCATION
 NAD83 STATE PLANE CO N
 LATITUDE= 40.161241°
 LONGITUDE= 104.612396°

LATITUDE= 40°09'40.468"
 LONGITUDE= 104°36'44.626"

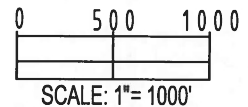
NOTES:
 BH AND HEEL (WGS 84 UTM 13N)
 LOCATIONS PROVIDED BY CLIENT.
 SEE ATTACHED MAP FOR ADDITIONAL
 IMPROVEMENTS WITHIN 500'.

PDOP= 2.0
 GPS OPERATOR: BEN MILIUS

LEGEND

- ⊕ = EXISTING MONUMENT
- ⊙ = PROPOSED WELL
- BH = BOTTOM HOLE
- ⬆ = BOTTOM HOLE
- ▲ = HEEL LOCATION
- = CALCULATED POSITION

WELL GUEST 28C-12HZ TO BE LOCATED
 2390' FSL AND 1997' FWL



- NOTES:**
- THIS FIELD SURVEY CONFORMS TO THE MINIMUM STANDARDS SET BY THE C.O.G.C.C., RULE NO. 215
 - BEARINGS ARE BASED ON THE ASSUMPTION THAT THE NORTH LINE OF THE NORTHEAST QUARTER OF SECTION 13, BEARS S89°36'50"E BETWEEN THE MONUMENTS DESCRIBED HEREON.
 - GRID DISTANCES ARE SHOWN, AS MEASURED IN THE FIELD, WITH TIES TO WELLS MEASURED PERPENDICULAR TO SECTION LINES. TO GET GROUND DISTANCES MULTIPLY THE SHOWN DISTANCE BY 1.000272228.
 - ALL LINES SHOWN THAT ARE WITHOUT DIMENSION SHOULD BE CONSIDERED SCALED AND ONLY REPRESENT A GRAPHICAL DEPICTION OF THE APPROXIMATE LOCATION OF SAID LINE.
 - CERTIFIED OCTOBER 18, 2014 FOR WELLS STAKED ON OCTOBER 3, 2014. SECOND REVISION DECEMBER 7, 2016 FOR BHL CHANGES AND ADDITION OF SECTION 1. CORNERS ON THE EAST LINE OF SECTION 1 ARE CALCULATED DUE TO ROAD CONSTRUCTION AND WILL BE RESET BY THAT SURVEYOR AFTER CONSTRUCTION

I, JACOB S. FRISCH, A LICENSED PROFESSIONAL LAND SURVEYOR IN THE STATE OF COLORADO DO HEREBY CERTIFY TO **KERR-MCGEE OIL & GAS ONSHORE LP**, THAT THE SURVEY AND WELL LOCATION CERTIFICATE SHOWN HEREON WERE DONE BY ME OR UNDER MY DIRECT SUPERVISION AND THAT THE DRAWING SHOWN HEREON ACCURATELY DEPICTS THE PROPOSED LOCATION OF THE WELL. THIS CERTIFICATE DOES NOT REPRESENT A LAND SURVEY PLAT OR IMPROVEMENT SURVEY PLAT AS DEFINED BY C.R.S. 38-51-102 AND CANNOT BE RELIED UPON TO DETERMINE OWNERSHIP.

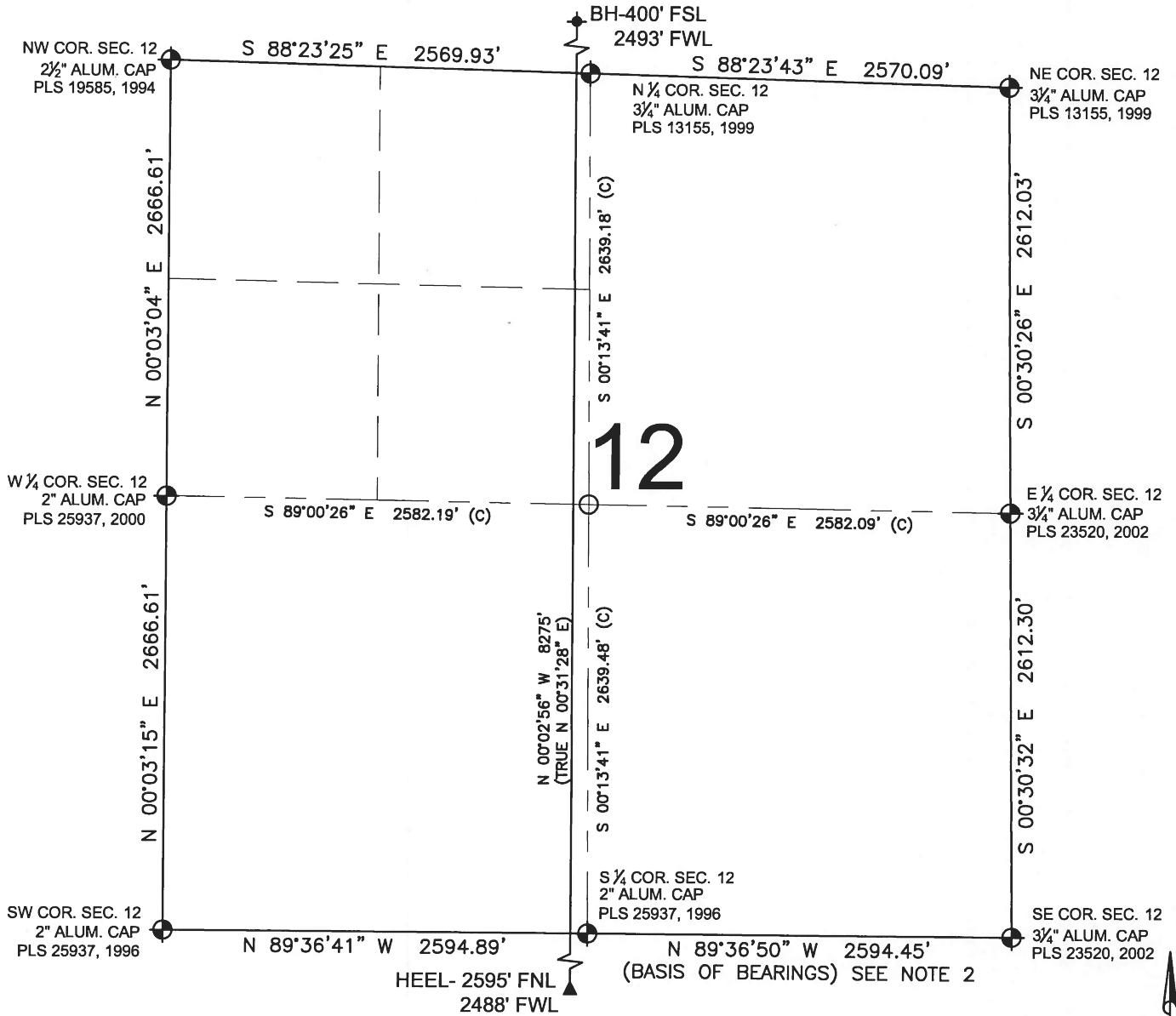


	FIELD DATE: 01-08-15	SURFACE LOCATION: NE 1/4 SW 1/4,
	DRAWING DATE: 12-01-16	SEC. 13, T2N, R65W, 6TH P.M.
BY: BMO	CHECKED: MLP	WELD COUNTY, COLORADO

NOTICE: ACCORDING TO COLORADO LAW YOU MUST COMMENCE ANY LEGAL ACTION BASED UPON ANY DEFECT IN THIS SURVEY WITHIN THREE YEARS AFTER YOU FIRST DISCOVER SUCH DEFECT. IN NO EVENT MAY ANY ACTION BASED UPON ANY DEFECT IN THIS SURVEY BE COMMENCED MORE THAN TEN YEARS FROM THIS SAID DATE OF THIS CERTIFICATION SHOWN HEREON.

WELL LOCATION CERTIFICATE: GUEST 28C-12HZ

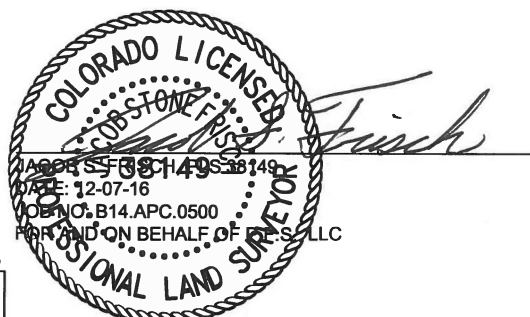
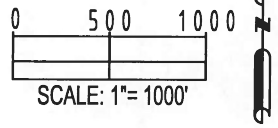
SECTION 12, TOWNSHIP 2 NORTH, RANGE 65 WEST, 6TH P.M.



- NOTES:**
1. THIS FIELD SURVEY CONFORMS TO THE MINIMUM STANDARDS SET BY THE C.O.G.C.C., RULE NO. 215
 2. BEARINGS ARE BASED ON THE ASSUMPTION THAT THE NORTH LINE OF THE NORTHEAST QUARTER OF SECTION 13, BEARS S89°36'50"E BETWEEN THE MONUMENTS DESCRIBED HEREON.
 3. GRID DISTANCES ARE SHOWN, AS MEASURED IN THE FIELD, WITH TIES TO WELLS MEASURED PERPENDICULAR TO SECTION LINES. TO GET GROUND DISTANCES MULTIPLY THE SHOWN DISTANCE BY 1.000272228.
 4. ALL LINES SHOWN THAT ARE WITHOUT DIMENSION SHOULD BE CONSIDERED SCALED AND ONLY REPRESENT A GRAPHICAL DEPICTION OF THE APPROXIMATE LOCATION OF SAID LINE.
 5. CERTIFIED OCTOBER 18, 2014 FOR WELLS STAKED ON OCTOBER 3, 2014. SECOND REVISION DECEMBER 7, 2016 FOR BHL CHANGES AND ADDITION OF SECTION 1. CORNERS ON THE EAST LINE OF SECTION 1 ARE CALCULATED DUE TO ROAD CONSTRUCTION AND WILL BE RESET BY THAT SURVEYOR AFTER CONSTRUCTION

LEGEND

- = EXISTING MONUMENT
- ◆ = BOTTOM HOLE
- = PROPOSED WELL
- ▲ = HEEL LOCATION
- BH = BOTTOM HOLE
- = CALCULATED POSITION

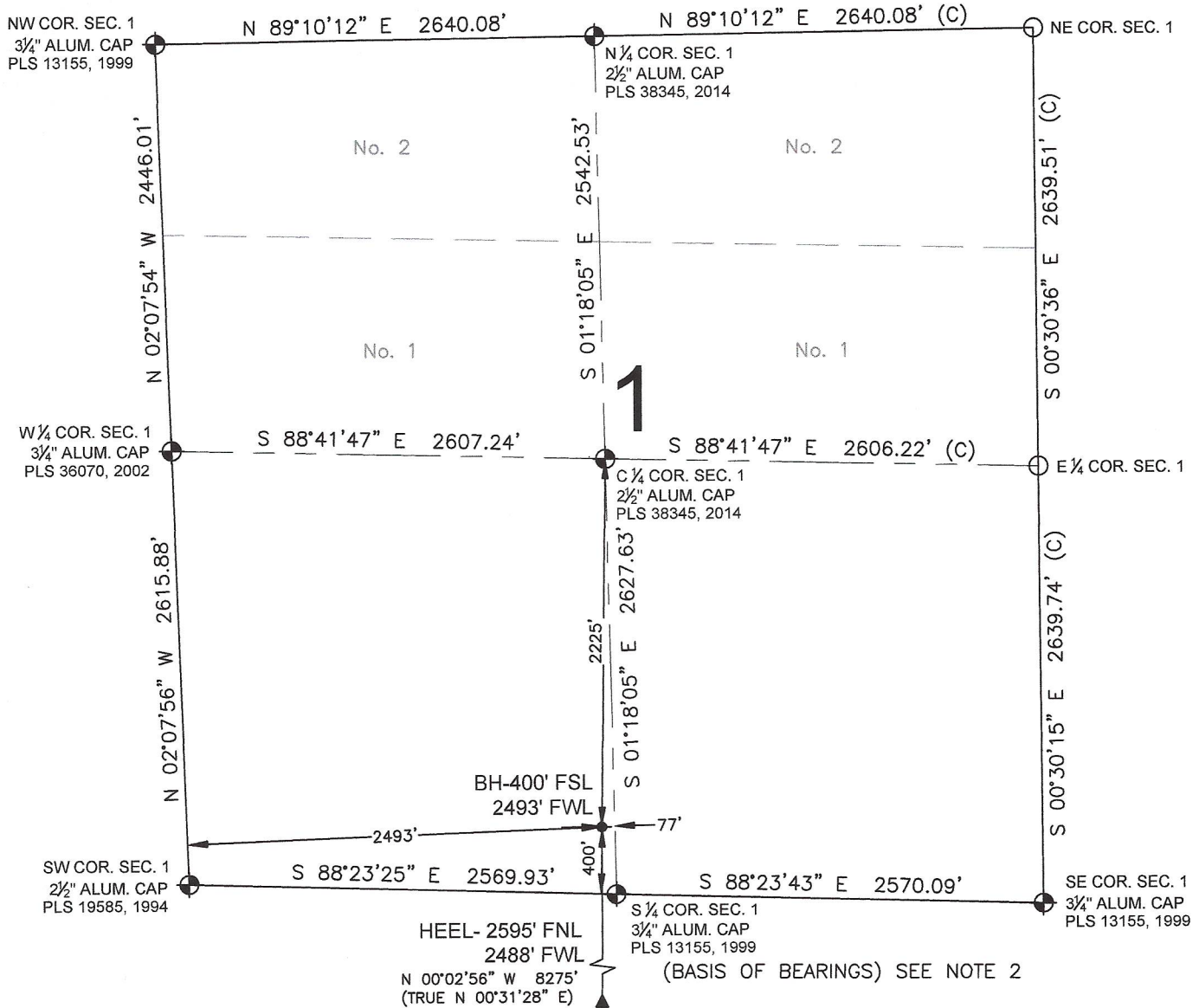


PREPARED BY: Petroleum Field Services, LLC 7535 Hilltop Circle Denver, CO 80221	FIELD DATE: 01-08-15	SURFACE LOCATION: NE 1/4 SW 1/4, SEC. 13, T2N, R65W, 6TH P.M.
	DRAWING DATE: 12-01-16	WELD COUNTY, COLORADO
	BY: BMO CHECKED: MLP	

NOTICE: ACCORDING TO COLORADO LAW YOU MUST COMMENCE ANY LEGAL ACTION BASED UPON ANY DEFECT IN THIS SURVEY WITHIN THREE YEARS AFTER YOU FIRST DISCOVER SUCH DEFECT. IN NO EVENT MAY ANY ACTION BASED UPON ANY DEFECT IN THIS SURVEY BE COMMENCED MORE THAN TEN YEARS FROM THIS SAID DATE OF THIS CERTIFICATION SHOWN HEREON.

WELL LOCATION CERTIFICATE: GUEST 28C-12HZ

SECTION 1, TOWNSHIP 2 NORTH, RANGE 65 WEST, 6TH P.M.



NOTES:

1. THIS FIELD SURVEY CONFORMS TO THE MINIMUM STANDARDS SET BY THE C.O.G.C.C., RULE NO. 215
2. BEARINGS ARE BASED ON THE ASSUMPTION THAT THE NORTH LINE OF THE NORTHEAST QUARTER OF SECTION 13, BEARS S89°36'50"E BETWEEN THE MONUMENTS DESCRIBED HEREON.
3. GRID DISTANCES ARE SHOWN, AS MEASURED IN THE FIELD, WITH TIES TO WELLS MEASURED PERPENDICULAR TO SECTION LINES. TO GET GROUND DISTANCES MULTIPLY THE SHOWN DISTANCE BY 1.000272228.
4. ALL LINES SHOWN THAT ARE WITHOUT DIMENSION SHOULD BE CONSIDERED SCALED AND ONLY REPRESENT A GRAPHICAL DEPICTION OF THE APPROXIMATE LOCATION OF SAID LINE.
5. CERTIFIED OCTOBER 18, 2014 FOR WELLS STAKED ON OCTOBER 3, 2014. SECOND REVISION DECEMBER 7, 2016 FOR BHL CHANGES AND ADDITION OF SECTION 1. CORNERS ON THE EAST LINE OF SECTION 1 ARE CALCULATED DUE TO ROAD CONSTRUCTION AND WILL BE RESET BY THAT SURVEYOR AFTER CONSTRUCTION

LEGEND

- = EXISTING MONUMENT
- ◆ = BOTTOM HOLE
- = PROPOSED WELL
- ▲ = HEEL LOCATION
- BH = BOTTOM HOLE
- = CALCULATED POSITION
- (C) = CALCULATED

0 500 1000

SCALE: 1" = 1000'



SHEET 3 OF 3

PREPARED BY: PFS Petroleum Field Services, LLC 7535 Hilltop Circle Denver, CO 80221	FIELD DATE: 01-08-15 DRAWING DATE: 12-01-16 BY: BMO CHECKED: MLP	SURFACE LOCATION: NE 1/4 SW 1/4, SEC. 13, T2N, R65W, 6TH P.M. WELD COUNTY, COLORADO
--	---	--

NOTICE: ACCORDING TO COLORADO LAW YOU MUST COMMENCE ANY LEGAL ACTION BASED UPON ANY DEFECT IN THIS SURVEY WITHIN THREE YEARS AFTER YOU FIRST DISCOVER SUCH DEFECT. IN NO EVENT MAY ANY ACTION BASED UPON ANY DEFECT IN THIS SURVEY BE COMMENCED MORE THAN TEN YEARS FROM THIS SAID DATE OF THIS CERTIFICATION SHOWN HEREON.