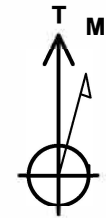




Project: SEC 20-T6N-R66W
 Site: HOOD-DOLES 37-20 PAD
 Well: HOOD 11C-22-M
 Wellbore: OH
 Design: PLAN #2



Azimuths to True North
 Magnetic North: 8.29°
 Magnetic Field
 Strength: 52482.6snT
 Dip Angle: 66.92°
 Date: 12/15/2016
 Model: IGRF2015

SECTION DETAILS

MD	Inc	Azi	TVD	+N/-S	+E/-W	Dleg	TFace	VSect	Target
0.00	0.00	0.00	0.00	0.00	0.00	0.00	0.00	0.00	
2000.00	0.00	0.00	2000.00	0.00	0.00	0.00	0.00	0.00	
2914.33	18.29	46.84	2898.89	98.97	105.53	2.00	46.84	105.53	
6879.49	18.29	46.84	6663.80	950.09	1013.00	0.00	0.00	1013.00	
7729.26	89.67	90.12	7143.00	1056.71	1629.49	9.00	44.84	1629.49	
15124.77	89.67	90.12	7185.00	1041.02	9024.86	0.00	0.00	9024.86	

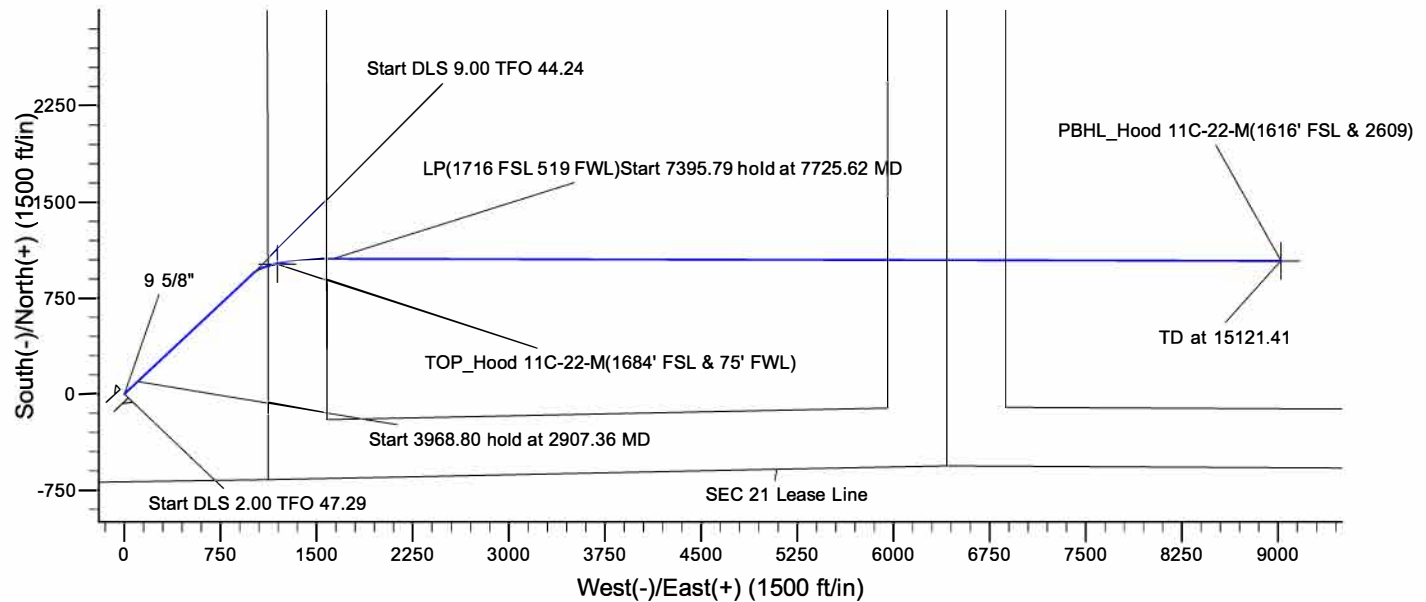
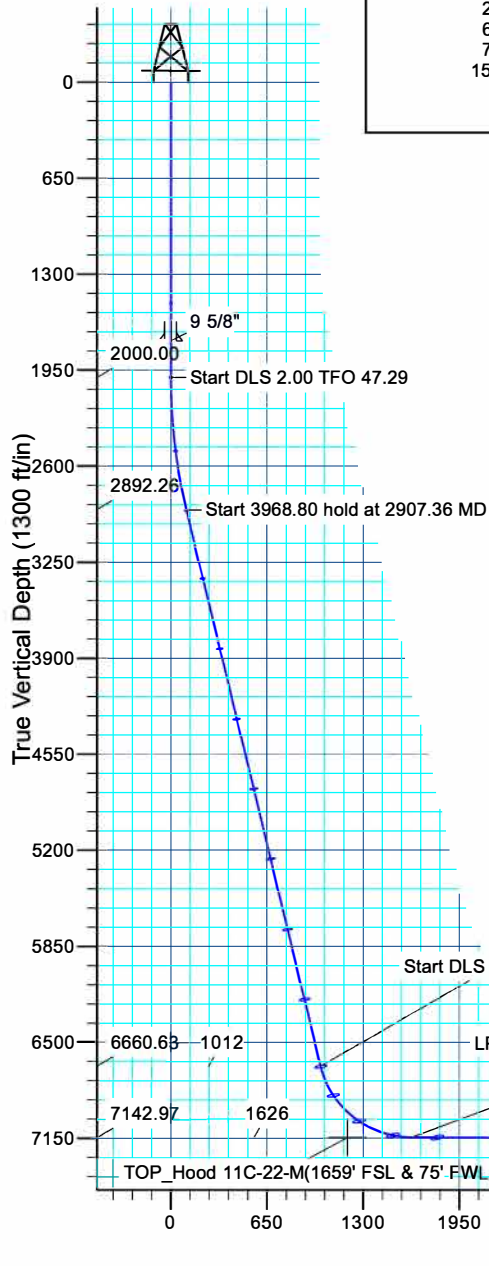
PBHL_Hood 11C-22-M(1616' FSL & 2609)

PROJECT DETAILS: SEC 20-T6N-R66W

Geodetic System: US State Plane 1983
 Datum: North American Datum 1983
 Ellipsoid: GRS 1980
 Zone: Colorado Northern Zone
 Colorado Northern Zone
 System Datum: Mean Sea Level

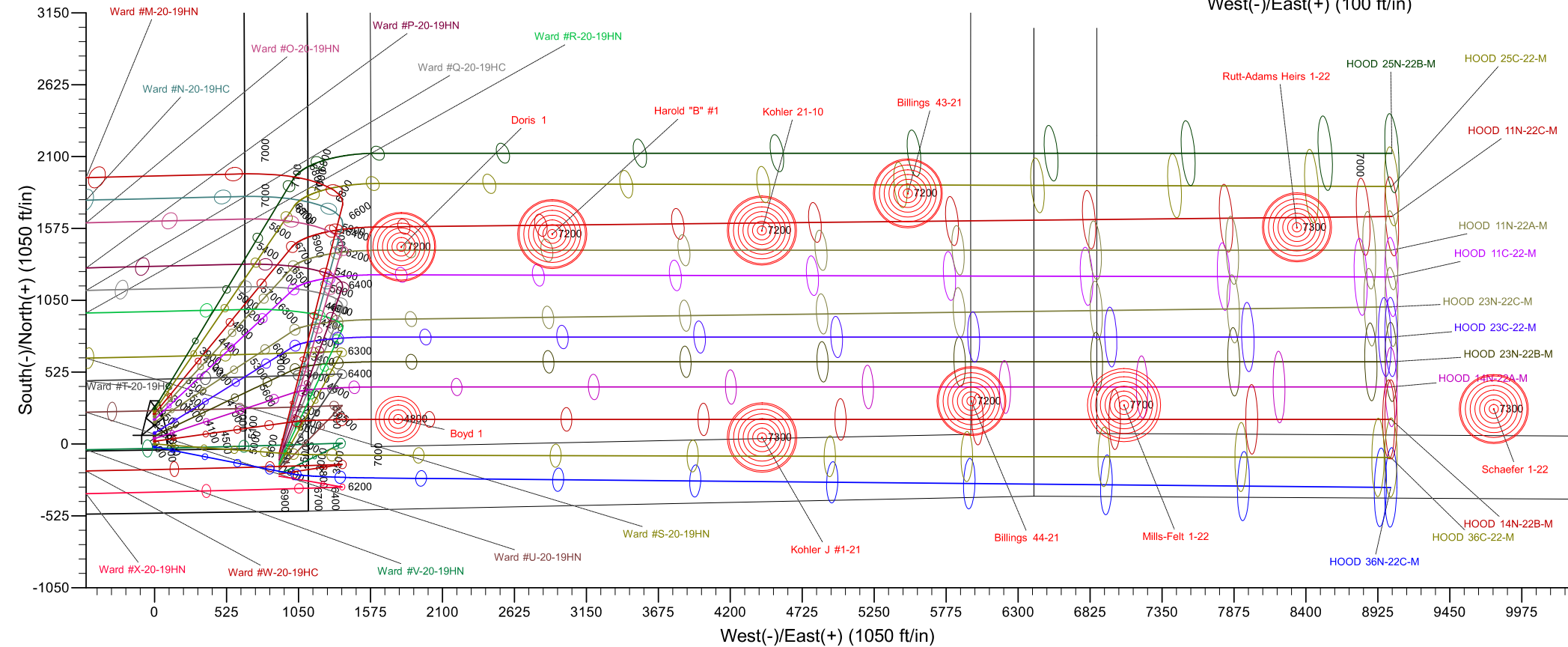
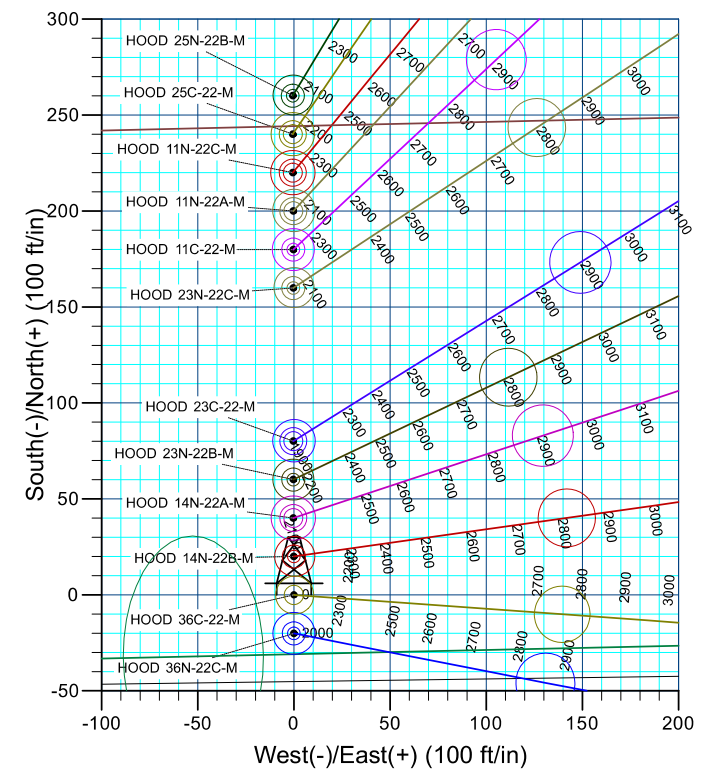
CASING DETAILS

TVD	MD	Name	Size
1750.00	1750.00	9 5/8"	9.625



HOOD 11C-22-M/PLAN #2

Vertical Section at 90.00° (1300 ft/in)





Synergy Resources Corporation

SEC 20-T6N-R66W

HOOD-DOLES 37-20 PAD

HOOD 11C-22-M

OH

Plan: PLAN #2

Standard Survey Report

20 December, 2016

Company:	Synergy Resources Corporation	Local Co-ordinate Reference:	Well HOOD 11C-22-M
Project:	SEC 20-T6N-R66W	TVD Reference:	GL 4734 & 25' KB @ 4759.00ft (ASSUMED)
Site:	HOOD-DOLES 37-20 PAD	MD Reference:	GL 4734 & 25' KB @ 4759.00ft (ASSUMED)
Well:	HOOD 11C-22-M	North Reference:	True
Wellbore:	OH	Survey Calculation Method:	Minimum Curvature
Design:	PLAN #2	Database:	EDM 5000.14 Single User Db

Project	SEC 20-T6N-R66W		
Map System:	US State Plane 1983	System Datum:	Mean Sea Level
Geo Datum:	North American Datum 1983		
Map Zone:	Colorado Northern Zone		

Site		HOOD-DOLES 37-20 PAD			
Site Position:		Northing:	1,414,281.96 ft	Latitude:	40.4684660
From:	Lat/Long	Easting:	3,195,759.92 ft	Longitude:	-104.7964230
Position Uncertainty:	4.92 ft	Slot Radius:	13.200 in	Grid Convergence:	0.45 °

Well	HOOD 11C-22-M, 685' FSL & 1122' FEL					
Well Position	+N/-S	0.00 ft	Northing:	1,414,201.80 ft	Latitude:	40.4682460
	+E/-W	0.00 ft	Easting:	3,195,760.83 ft	Longitude:	-104.7964220
Position Uncertainty		3.28 ft	Wellhead Elevation:	ft	Ground Level:	4,734.00 ft

Wellbore	OH				
Magnetics	Model Name	Sample Date	Declination (°)	Dip Angle (°)	Field Strength (nT)
	IGRF2015	12/15/2016	8.29	66.92	52,483

Design	PLAN #2			
Audit Notes:				
Version:	Phase:	PLAN	Tie On Depth:	0.00
Vertical Section:	Depth From (TVD) (ft)	+N/-S (ft)	+E/-W (ft)	Direction (°)
	0.00	0.00	0.00	90.00

Survey Tool Program	Date	12/20/2016		
From (ft)	To (ft)	Survey (Wellbore)	Tool Name	Description
0.00	15,124.62	PLAN #2 (OH)	MWD+IFR1	OWSG MWD + IFR1

Planned Survey									
Measured Depth (ft)	Inclination (°)	Azimuth (°)	Vertical Depth (ft)	+N/-S (ft)	+E/-W (ft)	Vertical Section (ft)	Dogleg Rate (°/100ft)	Build Rate (°/100ft)	Turn Rate (°/100ft)
0.00	0.00	0.00	0.00	0.00	0.00	0.00	0.00	0.00	0.00
1,750.00	0.00	0.00	1,750.00	0.00	0.00	0.00	0.00	0.00	0.00
9 5/8"									
2,000.00	0.00	0.00	2,000.00	0.00	0.00	0.00	0.00	0.00	0.00
Start DLS 2.00 TFO 47.29									
2,100.00	2.00	46.84	2,099.98	1.19	1.27	1.27	2.00	2.00	0.00
2,200.00	4.00	46.84	2,199.84	4.77	5.09	5.09	2.00	2.00	0.00
2,300.00	6.00	46.84	2,299.45	10.74	11.45	11.45	2.00	2.00	0.00
2,400.00	8.00	46.84	2,398.70	19.07	20.34	20.34	2.00	2.00	0.00
2,500.00	10.00	46.84	2,497.47	29.77	31.75	31.75	2.00	2.00	0.00

Company:	Synergy Resources Corporation	Local Co-ordinate Reference:	Well HOOD 11C-22-M
Project:	SEC 20-T6N-R66W	TVD Reference:	GL 4734 & 25' KB @ 4759.00ft (ASSUMED)
Site:	HOOD-DOLES 37-20 PAD	MD Reference:	GL 4734 & 25' KB @ 4759.00ft (ASSUMED)
Well:	HOOD 11C-22-M	North Reference:	True
Wellbore:	OH	Survey Calculation Method:	Minimum Curvature
Design:	PLAN #2	Database:	EDM 5000.14 Single User Db

Planned Survey									
Measured Depth (ft)	Inclination (°)	Azimuth (°)	Vertical Depth (ft)	+N/-S (ft)	+E/-W (ft)	Vertical Section (ft)	Dogleg Rate (°/100ft)	Build Rate (°/100ft)	Turn Rate (°/100ft)
2,600.00	12.00	46.84	2,595.62	42.83	45.66	45.66	2.00	2.00	0.00
2,700.00	14.00	46.84	2,693.06	58.21	62.07	62.07	2.00	2.00	0.00
2,800.00	16.00	46.84	2,789.64	75.92	80.95	80.95	2.00	2.00	0.00
2,900.00	18.00	46.84	2,885.27	95.92	102.27	102.27	2.00	2.00	0.00
2,907.36	18.15	46.84	2,892.26	97.48	103.93	103.93	2.00	2.00	0.00
Start 3968.80 hold at 2907.36 MD									
2,914.33	18.29	46.84	2,898.89	98.97	105.53	105.53	2.00	2.00	0.00
3,000.00	18.29	46.84	2,980.23	117.36	125.13	125.13	0.00	0.00	0.00
3,100.00	18.29	46.84	3,075.18	138.83	148.02	148.02	0.00	0.00	0.00
3,200.00	18.29	46.84	3,170.13	160.29	170.90	170.90	0.00	0.00	0.00
3,300.00	18.29	46.84	3,265.08	181.76	193.79	193.79	0.00	0.00	0.00
3,400.00	18.29	46.84	3,360.03	203.22	216.68	216.68	0.00	0.00	0.00
3,500.00	18.29	46.84	3,454.98	224.69	239.56	239.56	0.00	0.00	0.00
3,600.00	18.29	46.84	3,549.93	246.15	262.45	262.45	0.00	0.00	0.00
3,700.00	18.29	46.84	3,644.88	267.61	285.34	285.34	0.00	0.00	0.00
3,800.00	18.29	46.84	3,739.83	289.08	308.22	308.22	0.00	0.00	0.00
3,900.00	18.29	46.84	3,834.78	310.54	331.11	331.11	0.00	0.00	0.00
4,000.00	18.29	46.84	3,929.73	332.01	353.99	353.99	0.00	0.00	0.00
4,100.00	18.29	46.84	4,024.68	353.47	376.88	376.88	0.00	0.00	0.00
4,200.00	18.29	46.84	4,119.63	374.94	399.77	399.77	0.00	0.00	0.00
4,300.00	18.29	46.84	4,214.58	396.40	422.65	422.65	0.00	0.00	0.00
4,400.00	18.29	46.84	4,309.53	417.87	445.54	445.54	0.00	0.00	0.00
4,500.00	18.29	46.84	4,404.48	439.33	468.42	468.42	0.00	0.00	0.00
4,600.00	18.29	46.84	4,499.43	460.80	491.31	491.31	0.00	0.00	0.00
4,700.00	18.29	46.84	4,594.38	482.26	514.20	514.20	0.00	0.00	0.00
4,800.00	18.29	46.84	4,689.33	503.73	537.08	537.08	0.00	0.00	0.00
4,900.00	18.29	46.84	4,784.28	525.19	559.97	559.97	0.00	0.00	0.00
5,000.00	18.29	46.84	4,879.23	546.66	582.86	582.86	0.00	0.00	0.00
5,100.00	18.29	46.84	4,974.18	568.12	605.74	605.74	0.00	0.00	0.00
5,200.00	18.29	46.84	5,069.13	589.59	628.63	628.63	0.00	0.00	0.00
5,300.00	18.29	46.84	5,164.08	611.05	651.51	651.51	0.00	0.00	0.00
5,400.00	18.29	46.84	5,259.03	632.52	674.40	674.40	0.00	0.00	0.00
5,500.00	18.29	46.84	5,353.98	653.98	697.29	697.29	0.00	0.00	0.00
5,600.00	18.29	46.84	5,448.93	675.45	720.17	720.17	0.00	0.00	0.00
5,700.00	18.29	46.84	5,543.88	696.91	743.06	743.06	0.00	0.00	0.00
5,800.00	18.29	46.84	5,638.83	718.38	765.95	765.95	0.00	0.00	0.00
5,900.00	18.29	46.84	5,733.78	739.84	788.83	788.83	0.00	0.00	0.00
6,000.00	18.29	46.84	5,828.73	761.31	811.72	811.72	0.00	0.00	0.00
6,100.00	18.29	46.84	5,923.68	782.77	834.60	834.60	0.00	0.00	0.00
6,200.00	18.29	46.84	6,018.63	804.24	857.49	857.49	0.00	0.00	0.00
6,300.00	18.29	46.84	6,113.58	825.70	880.38	880.38	0.00	0.00	0.00
6,400.00	18.29	46.84	6,208.53	847.17	903.26	903.26	0.00	0.00	0.00
6,500.00	18.29	46.84	6,303.48	868.63	926.15	926.15	0.00	0.00	0.00

Company:	Synergy Resources Corporation	Local Co-ordinate Reference:	Well HOOD 11C-22-M
Project:	SEC 20-T6N-R66W	TVD Reference:	GL 4734 & 25' KB @ 4759.00ft (ASSUMED)
Site:	HOOD-DOLES 37-20 PAD	MD Reference:	GL 4734 & 25' KB @ 4759.00ft (ASSUMED)
Well:	HOOD 11C-22-M	North Reference:	True
Wellbore:	OH	Survey Calculation Method:	Minimum Curvature
Design:	PLAN #2	Database:	EDM 5000.14 Single User Db

Planned Survey

Measured Depth (ft)	Inclination (°)	Azimuth (°)	Vertical Depth (ft)	+N/-S (ft)	+E/-W (ft)	Vertical Section (ft)	Dogleg Rate (°/100ft)	Build Rate (°/100ft)	Turn Rate (°/100ft)
6,600.00	18.29	46.84	6,398.43	890.10	949.04	949.04	0.00	0.00	0.00
6,700.00	18.29	46.84	6,493.37	911.56	971.92	971.92	0.00	0.00	0.00
6,800.00	18.29	46.84	6,588.32	933.03	994.81	994.81	0.00	0.00	0.00
6,876.15	18.29	46.84	6,660.63	949.37	1,012.24	1,012.24	0.00	0.00	0.00
Start DLS 9.00 TFO 44.24									
6,879.49	18.29	46.84	6,663.80	950.09	1,013.00	1,013.00	0.00	0.00	0.00
6,900.00	19.64	50.71	6,683.20	954.47	1,018.01	1,018.01	9.00	6.58	18.90
7,000.00	27.04	63.80	6,775.01	975.19	1,051.49	1,051.49	9.00	7.40	13.09
7,100.00	35.16	71.40	6,860.60	994.45	1,099.27	1,099.27	9.00	8.12	7.60
7,200.00	43.59	76.40	6,937.86	1,011.77	1,160.19	1,160.19	9.00	8.43	5.00
7,300.00	52.17	80.05	7,004.88	1,026.73	1,232.74	1,232.74	9.00	8.59	3.64
7,400.00	60.85	82.93	7,060.01	1,038.95	1,315.14	1,315.14	9.00	8.68	2.88
7,500.00	69.58	85.35	7,101.90	1,048.15	1,405.37	1,405.37	9.00	8.73	2.42
7,600.00	78.33	87.51	7,129.52	1,054.09	1,501.19	1,501.19	9.00	8.76	2.16
7,700.00	87.11	89.54	7,142.18	1,056.63	1,600.25	1,600.25	9.00	8.77	2.03
7,725.63	89.36	90.05	7,142.97	1,056.72	1,625.86	1,625.86	9.00	8.78	1.99
LP(1700 FSL 519 FWL)Start 7395.79 hold at 7725.62 MD									
7,729.26	89.67	90.12	7,143.00	1,056.71	1,629.49	1,629.49	9.00	8.78	1.99
7,800.00	89.67	90.12	7,143.40	1,056.56	1,700.23	1,700.23	0.00	0.00	0.00
7,900.00	89.67	90.12	7,143.97	1,056.35	1,800.23	1,800.23	0.00	0.00	0.00
8,000.00	89.67	90.12	7,144.54	1,056.14	1,900.23	1,900.23	0.00	0.00	0.00
8,100.00	89.67	90.12	7,145.10	1,055.93	2,000.22	2,000.22	0.00	0.00	0.00
8,200.00	89.67	90.12	7,145.67	1,055.71	2,100.22	2,100.22	0.00	0.00	0.00
8,300.00	89.67	90.12	7,146.24	1,055.50	2,200.22	2,200.22	0.00	0.00	0.00
8,400.00	89.67	90.12	7,146.81	1,055.29	2,300.22	2,300.22	0.00	0.00	0.00
8,500.00	89.67	90.12	7,147.38	1,055.08	2,400.22	2,400.22	0.00	0.00	0.00
8,600.00	89.67	90.12	7,147.94	1,054.87	2,500.22	2,500.22	0.00	0.00	0.00
8,700.00	89.67	90.12	7,148.51	1,054.65	2,600.21	2,600.21	0.00	0.00	0.00
8,800.00	89.67	90.12	7,149.08	1,054.44	2,700.21	2,700.21	0.00	0.00	0.00
8,900.00	89.67	90.12	7,149.65	1,054.23	2,800.21	2,800.21	0.00	0.00	0.00
9,000.00	89.67	90.12	7,150.22	1,054.02	2,900.21	2,900.21	0.00	0.00	0.00
9,100.00	89.67	90.12	7,150.78	1,053.80	3,000.21	3,000.21	0.00	0.00	0.00
9,200.00	89.67	90.12	7,151.35	1,053.59	3,100.20	3,100.20	0.00	0.00	0.00
9,300.00	89.67	90.12	7,151.92	1,053.38	3,200.20	3,200.20	0.00	0.00	0.00
9,400.00	89.67	90.12	7,152.49	1,053.17	3,300.20	3,300.20	0.00	0.00	0.00
9,500.00	89.67	90.12	7,153.06	1,052.96	3,400.20	3,400.20	0.00	0.00	0.00
9,600.00	89.67	90.12	7,153.62	1,052.74	3,500.20	3,500.20	0.00	0.00	0.00
9,700.00	89.67	90.12	7,154.19	1,052.53	3,600.20	3,600.20	0.00	0.00	0.00
9,800.00	89.67	90.12	7,154.76	1,052.32	3,700.19	3,700.19	0.00	0.00	0.00
9,900.00	89.67	90.12	7,155.33	1,052.11	3,800.19	3,800.19	0.00	0.00	0.00
10,000.00	89.67	90.12	7,155.89	1,051.90	3,900.19	3,900.19	0.00	0.00	0.00
10,100.00	89.67	90.12	7,156.46	1,051.68	4,000.19	4,000.19	0.00	0.00	0.00
10,200.00	89.67	90.12	7,157.03	1,051.47	4,100.19	4,100.19	0.00	0.00	0.00
10,300.00	89.67	90.12	7,157.60	1,051.26	4,200.18	4,200.18	0.00	0.00	0.00

Company:	Synergy Resources Corporation	Local Co-ordinate Reference:	Well HOOD 11C-22-M
Project:	SEC 20-T6N-R66W	TVD Reference:	GL 4734 & 25' KB @ 4759.00ft (ASSUMED)
Site:	HOOD-DOLES 37-20 PAD	MD Reference:	GL 4734 & 25' KB @ 4759.00ft (ASSUMED)
Well:	HOOD 11C-22-M	North Reference:	True
Wellbore:	OH	Survey Calculation Method:	Minimum Curvature
Design:	PLAN #2	Database:	EDM 5000.14 Single User Db

Planned Survey									
Measured Depth (ft)	Inclination (°)	Azimuth (°)	Vertical Depth (ft)	+N/-S (ft)	+E/-W (ft)	Vertical Section (ft)	Dogleg Rate (°/100ft)	Build Rate (°/100ft)	Turn Rate (°/100ft)
10,400.00	89.67	90.12	7,158.17	1,051.05	4,300.18	4,300.18	0.00	0.00	0.00
10,500.00	89.67	90.12	7,158.73	1,050.83	4,400.18	4,400.18	0.00	0.00	0.00
10,600.00	89.67	90.12	7,159.30	1,050.62	4,500.18	4,500.18	0.00	0.00	0.00
10,700.00	89.67	90.12	7,159.87	1,050.41	4,600.18	4,600.18	0.00	0.00	0.00
10,800.00	89.67	90.12	7,160.44	1,050.20	4,700.18	4,700.18	0.00	0.00	0.00
10,900.00	89.67	90.12	7,161.01	1,049.99	4,800.17	4,800.17	0.00	0.00	0.00
11,000.00	89.67	90.12	7,161.57	1,049.77	4,900.17	4,900.17	0.00	0.00	0.00
11,100.00	89.67	90.12	7,162.14	1,049.56	5,000.17	5,000.17	0.00	0.00	0.00
11,200.00	89.67	90.12	7,162.71	1,049.35	5,100.17	5,100.17	0.00	0.00	0.00
11,300.00	89.67	90.12	7,163.28	1,049.14	5,200.17	5,200.17	0.00	0.00	0.00
11,400.00	89.67	90.12	7,163.85	1,048.93	5,300.16	5,300.16	0.00	0.00	0.00
11,500.00	89.67	90.12	7,164.41	1,048.71	5,400.16	5,400.16	0.00	0.00	0.00
11,600.00	89.67	90.12	7,164.98	1,048.50	5,500.16	5,500.16	0.00	0.00	0.00
11,700.00	89.67	90.12	7,165.55	1,048.29	5,600.16	5,600.16	0.00	0.00	0.00
11,800.00	89.67	90.12	7,166.12	1,048.08	5,700.16	5,700.16	0.00	0.00	0.00
11,900.00	89.67	90.12	7,166.69	1,047.87	5,800.16	5,800.16	0.00	0.00	0.00
12,000.00	89.67	90.12	7,167.25	1,047.65	5,900.15	5,900.15	0.00	0.00	0.00
12,100.00	89.67	90.12	7,167.82	1,047.44	6,000.15	6,000.15	0.00	0.00	0.00
12,200.00	89.67	90.12	7,168.39	1,047.23	6,100.15	6,100.15	0.00	0.00	0.00
12,300.00	89.67	90.12	7,168.96	1,047.02	6,200.15	6,200.15	0.00	0.00	0.00
12,400.00	89.67	90.12	7,169.53	1,046.80	6,300.15	6,300.15	0.00	0.00	0.00
12,500.00	89.67	90.12	7,170.09	1,046.59	6,400.14	6,400.14	0.00	0.00	0.00
12,600.00	89.67	90.12	7,170.66	1,046.38	6,500.14	6,500.14	0.00	0.00	0.00
12,700.00	89.67	90.12	7,171.23	1,046.17	6,600.14	6,600.14	0.00	0.00	0.00
12,800.00	89.67	90.12	7,171.80	1,045.96	6,700.14	6,700.14	0.00	0.00	0.00
12,900.00	89.67	90.12	7,172.36	1,045.74	6,800.14	6,800.14	0.00	0.00	0.00
13,000.00	89.67	90.12	7,172.93	1,045.53	6,900.14	6,900.14	0.00	0.00	0.00
13,100.00	89.67	90.12	7,173.50	1,045.32	7,000.13	7,000.13	0.00	0.00	0.00
13,200.00	89.67	90.12	7,174.07	1,045.11	7,100.13	7,100.13	0.00	0.00	0.00
13,300.00	89.67	90.12	7,174.64	1,044.90	7,200.13	7,200.13	0.00	0.00	0.00
13,400.00	89.67	90.12	7,175.20	1,044.68	7,300.13	7,300.13	0.00	0.00	0.00
13,500.00	89.67	90.12	7,175.77	1,044.47	7,400.13	7,400.13	0.00	0.00	0.00
13,600.00	89.67	90.12	7,176.34	1,044.26	7,500.12	7,500.12	0.00	0.00	0.00
13,700.00	89.67	90.12	7,176.91	1,044.05	7,600.12	7,600.12	0.00	0.00	0.00
13,800.00	89.67	90.12	7,177.48	1,043.83	7,700.12	7,700.12	0.00	0.00	0.00
13,900.00	89.67	90.12	7,178.04	1,043.62	7,800.12	7,800.12	0.00	0.00	0.00
14,000.00	89.67	90.12	7,178.61	1,043.41	7,900.12	7,900.12	0.00	0.00	0.00
14,100.00	89.67	90.12	7,179.18	1,043.20	8,000.11	8,000.11	0.00	0.00	0.00
14,200.00	89.67	90.12	7,179.75	1,042.99	8,100.11	8,100.11	0.00	0.00	0.00
14,300.00	89.67	90.12	7,180.32	1,042.77	8,200.11	8,200.11	0.00	0.00	0.00
14,400.00	89.67	90.12	7,180.88	1,042.56	8,300.11	8,300.11	0.00	0.00	0.00
14,500.00	89.67	90.12	7,181.45	1,042.35	8,400.11	8,400.11	0.00	0.00	0.00
14,600.00	89.67	90.12	7,182.02	1,042.14	8,500.11	8,500.11	0.00	0.00	0.00

Company:	Synergy Resources Corporation	Local Co-ordinate Reference:	Well HOOD 11C-22-M
Project:	SEC 20-T6N-R66W	TVD Reference:	GL 4734 & 25' KB @ 4759.00ft (ASSUMED)
Site:	HOOD-DOLES 37-20 PAD	MD Reference:	GL 4734 & 25' KB @ 4759.00ft (ASSUMED)
Well:	HOOD 11C-22-M	North Reference:	True
Wellbore:	OH	Survey Calculation Method:	Minimum Curvature
Design:	PLAN #2	Database:	EDM 5000.14 Single User Db

Planned Survey

Measured Depth (ft)	Inclination (°)	Azimuth (°)	Vertical Depth (ft)	+N/-S (ft)	+E/-W (ft)	Vertical Section (ft)	Dogleg Rate (°/100ft)	Build Rate (°/100ft)	Turn Rate (°/100ft)
14,700.00	89.67	90.12	7,182.59	1,041.93	8,600.10	8,600.10	0.00	0.00	0.00
14,800.00	89.67	90.12	7,183.16	1,041.71	8,700.10	8,700.10	0.00	0.00	0.00
14,900.00	89.67	90.12	7,183.72	1,041.50	8,800.10	8,800.10	0.00	0.00	0.00
15,000.00	89.67	90.12	7,184.29	1,041.29	8,900.10	8,900.10	0.00	0.00	0.00
15,100.00	89.67	90.12	7,184.86	1,041.08	9,000.10	9,000.10	0.00	0.00	0.00
15,121.41	89.67	90.12	7,184.98	1,041.03	9,021.51	9,021.51	0.00	0.00	0.00
TD at 15121.41									
15,124.77	89.67	90.12	7,185.00	1,041.02	9,024.86	9,024.86	0.00	0.00	0.00

Design Targets

Target Name	Dip Angle (°)	Dip Dir. (°)	TVD (ft)	+N/-S (ft)	+E/-W (ft)	Northing (ft)	Easting (ft)	Latitude	Longitude
- hit/miss target									
- Shape									
TOP_Hood 11C-22-M(16'	0.00	0.00	7,143.00	1,015.95	1,194.95	1,415,227.20	3,196,947.69	40.4710346	-104.7921270
- plan misses target center by 134.94ft at 7343.79ft MD (7030.57 TVD, 1032.44 N, 1267.72 E)									
- Point									
PBHL_Hood 11C-22-M(16'	0.00	0.00	7,185.00	1,041.02	9,024.86	1,415,314.40	3,204,777.15	40.4710990	-104.7639840
- plan hits target center									
- Point									

Casing Points

Measured Depth (ft)	Vertical Depth (ft)	Name	Casing Diameter (in)	Hole Diameter (in)
1,750.00	1,750.00	9 5/8"	9.625	13.500

Plan Annotations

Measured Depth (ft)	Vertical Depth (ft)	Local Coordinates	Comment
+N/-S (ft)	+E/-W (ft)		
2000	2000	0	0
2907	2892	97	104
6876	6661	949	1012
7726	7143	1057	1626
15,121	7185	1041	9022
			Start DLS 2.00 TFO 47.29
			Start 3968.80 hold at 2907.36 MD
			Start DLS 9.00 TFO 44.24
			LP(1700 FSL 519 FWL)Start 7395.79 hold at 7725.62 MD
			TD at 15121.41

Checked By: _____ Approved By: _____ Date: _____