

# T6N, R66W

NW. COR.  
SEC. 20, T6N, R66W  
FOUND 2 1/2" ALUM. CAP  
L.S. NO. 30462

S 88°03'08" W  
1324.42' (M)

S 88°02'38" W  
1324.25' (M)

S 88°42'56" W 2640.71' (M)

NE. COR.  
SEC. 20, T6N, R66W  
SET 2 1/2" ALUM. CAP  
L.S. NO. 38230

W. 1/16 COR.  
SEC. 20 & SEC. 17, T6N, R66W  
SET 2 1/2" ALUM. CAP  
L.S. NO. 38230

N. 1/4 COR.  
SEC. 20, T6N, R66W  
FOUND 3 1/4" ALUM. CAP  
WITNESS COR 39' SOUTH  
OF CORNER POSITION  
L.S. NO. 22098

MATCH LINE  
SEE SHEET 2

SURFACE LOCATION  
GROUND ELEVATION= 4735.7'  
LATITUDE= 40.467972°  
LONGITUDE= -104.796422°  
1/4 1/4: SE1/4 SE1/4

TOP OF PRODUCTION  
LATITUDE= 40.469764°  
LONGITUDE= -104.792124°  
1/4 1/4: SW1/4 SW1/4

BOTTOM HOLE LOCATION  
LATITUDE= 40.469894°  
LONGITUDE= -104.763990°  
1/4 1/4: SE1/4 SW1/4

W. 1/4 COR.  
SEC. 20, T6N, R66W  
FOUND 3 1/4" ALUM. CAP  
WITNESS COR 200' SOUTH  
OF CORNER POSITION  
L.S. NO. 33642

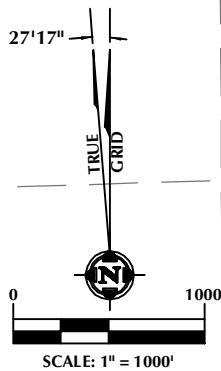
S 88°26'19" W  
2659.00' (C)

20

S 88°26'19" W  
2653.82' (C)

E. 1/4 COR.  
SEC. 20, T6N, R66W  
FOUND 3 1/4" ALUM. CAP  
L.S. NO. 22098

N 00°13'34" W 2644.08' (M)



HOOD 23C-22-M  
SURFACE LOCATION

460' BUFFER

1122'

WELL BORE  
CONTINUES  
INTO SECTION 21

SW. COR.  
SEC. 20, T6N, R66W  
FOUND 3 1/4" ALUM. CAP  
L.S. NO. 16154

S 87°56'37" W  
1335.19' (M)

S 87°56'07" W  
1335.22' (M)

S 88°45'03" W  
1328.44' (M)

S 88°45'11" W  
1328.53' (M)

SE. COR.  
SEC. 20, T6N, R66W  
FOUND 2 1/2" ALUM. CAP  
L.S. NO. 28285

W. 1/16 COR.  
SEC. 20 & SEC. 29, T6N, R66W  
FOUND 2 1/2" ALUM. CAP  
L.S. NO. 9644

S. 1/4 COR.  
SEC. 20, T6N, R66W  
FOUND 2 1/2" ALUM. CAP  
L.S. NO. 23501

E. 1/16 COR.  
SEC. 20 & SEC. 29, T6N, R66W  
FOUND 3 1/4" ALUM. CAP  
L.S. NO. 4392

## CERTIFICATE OF SURVEYOR:

THIS IS TO CERTIFY THAT THE ABOVE PLAT WAS PREPARED FROM FIELD NOTES OF ACTUAL SURVEY MADE BY ME OR UNDER MY SUPERVISION AND THAT THE SAME ARE TRUE AND CORRECT TO THE BEST OF MY KNOWLEDGE AND BELIEF. THIS CERTIFICATE DOES NOT REPRESENT A LAND SURVEY PLAT OR IMPROVEMENT SURVEY PLAT AS DEFINED BY C.S. 38-51-102 AND CANNOT BE RELIED UPON TO DETERMINE OWNERSHIP.

JOHN R. SLAUGH  
PROFESSIONAL LAND SURVEYOR  
COLORADO REGISTRATION NUMBER 38230  
10/24/16

NOTICE:  
ACCORDING TO COLORADO STATE LAW YOU MUST COMMENCE ANY LEGAL ACTION BASED UPON ANY DEFECT IN THIS SURVEY WITHIN THREE YEARS AFTER YOU FIRST DISCOVER SUCH DEFECT. IN NO EVENT MAY ANY ACTION BASED UPON ANY DEFECT IN THIS SURVEY BE COMMENCED MORE THAN TEN YEARS FROM THE DATE ON THE CERTIFICATION SHOWN HEREON.

## WELL DISTANCES:

BUILDING: ±1018' NE  
BUILDING UNIT: ±1018' NE  
HIGH OCCUPANCY BUILDING UNIT: 5280'+  
DESIGNATED OUTSIDE ACTIVITY AREA: 5280'+  
PUBLIC ROAD: ±575' S  
PROPERTY LINE: ±207' W  
ABOVE GROUND UTILITY: ±595' S  
RAILROAD: ±4501' S

## NOTES:

- ▲ INDICATES SECTION CORNER
- INDICATES CALCULATED CORNER
- DRAWING LATITUDE AND LONGITUDE COORDINATES ARE NAD 83 (2011)(EPOCH:2010)
- ELEVATION BASED ON NAVD88 (GEOID12B)
- BASIS OF BEARING DERIVED FROM COLORADO COORDINATE SYSTEM OF 1983 NORTH ZONE.
- ALL MEASURED DISTANCES ARE GRID.  
COMBINED SCALE FACTOR: .99974122 CALCULATED FROM THE SE. CORNER OF SECTION 20, T6N, R66W
- OPERATOR: ROB WILSON / PDOP = 1.4
- SEE ADDENDUM TO WELL LOCATION CERTIFICATE FOR EXISTING IMPROVEMENTS WITHIN 500' OF THE WELL PAD.
- WELL FOOTAGES ARE MEASURED AT RIGHT ANGLES TO THE SECTION LINES.
- THE BOTTOM OF HOLE BEARS N89°11'07"E, 7828' FROM THE TOP OF PRODUCTION ZONE.

## WELL PAD - HOOD-DOLES 37-20

HOOD 23C-22-M  
WELL LOCATION CERTIFICATE  
585' FSL & 1122' FEL SESE (SURFACE)  
LOCATED IN SECTION 20  
1221' FSL & 75' FWL SWSW (TOP OF PRODUCTION)  
LOCATED IN SECTION 21  
1177' FSL & 2608' FWL SESW (BOTTOM)  
LOCATED IN SECTION 22  
T6N, R66W, 6TH P.M.  
WELD COUNTY, COLORADO



1625 Broadway, Suite 300  
Denver, Colorado 80202



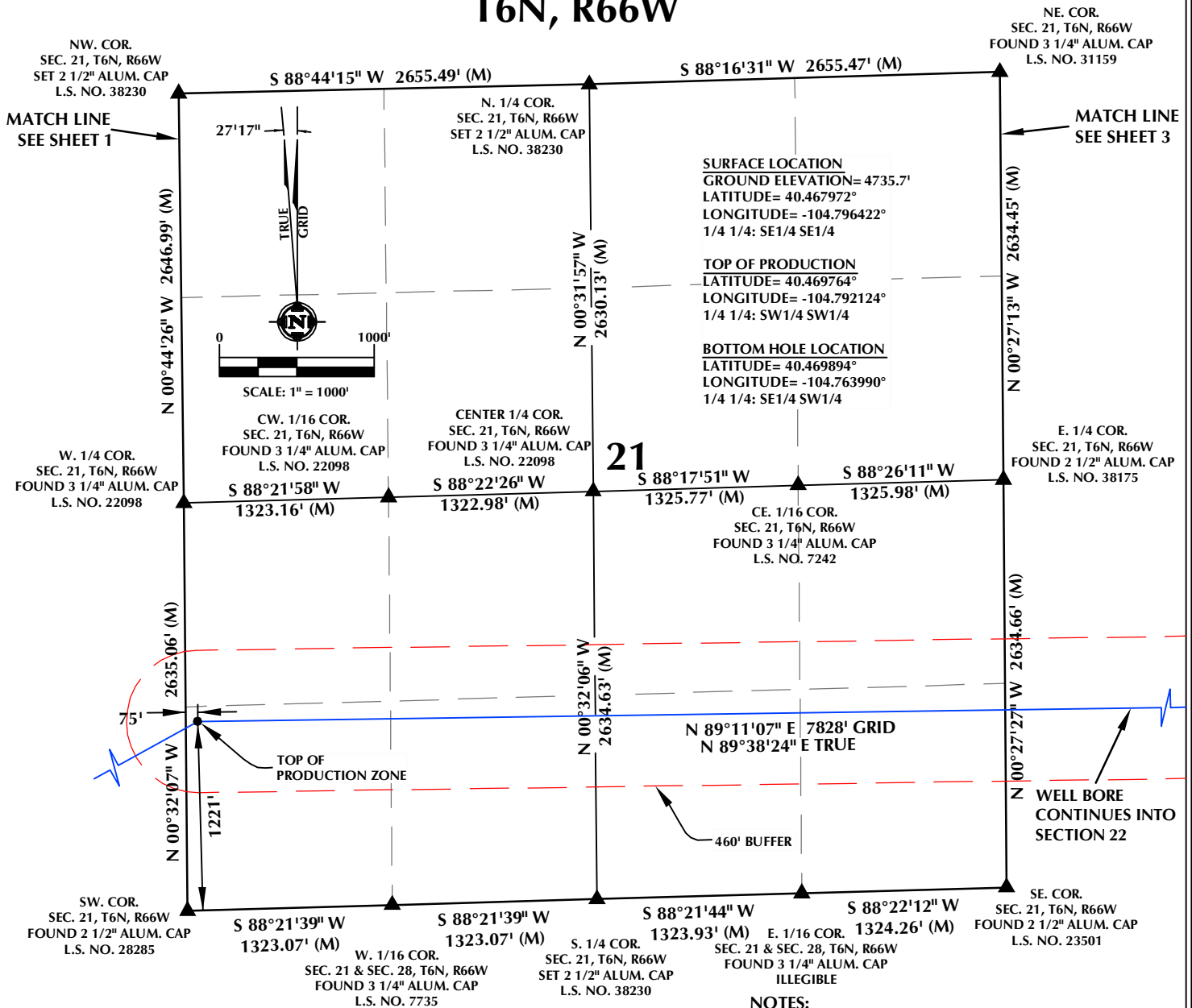
## CONSULTING, LLC

SHERIDAN OFFICE  
1095 Saberton Avenue  
Sheridan, Wyoming 82801  
Phone 307-674-0609

LOVELAND OFFICE  
1635 Foxtrail Drive, Suite 204  
Loveland, Colorado 80538  
Phone 970-776-4331

DRAFTED BY:	LMO	CHECKED BY:	JRS	SHEET NO:
DATE DRAFTED:	9/12/16	DATE SURVEYED:	7/7/16	1
REVISED:	10/24/16	FILE NAME:	16-80	1 OF 3

# T6N, R66W



## CERTIFICATE OF SURVEYOR:

THIS IS TO CERTIFY THAT THE ABOVE PLAT WAS PREPARED FROM FIELD NOTES OF ACTUAL SURVEY MADE BY ME OR UNDER MY SUPERVISION AND THAT THE SAME ARE TRUE AND CORRECT TO THE BEST OF MY KNOWLEDGE AND BELIEF. THIS CERTIFICATE DOES NOT REPRESENT A LAND SURVEY PLAT OR IMPROVEMENT SURVEY PLAT AS DEFINED BY C.S. 38-51-102 AND CANNOT BE RELIED UPON TO DETERMINE OWNERSHIP.

*John R. Slaugh*  
 JOHN R. SLAUGH  
 PROFESSIONAL LAND SURVEYOR  
 COLORADO REGISTRATION NUMBER 18230  
 10/24/16

**NOTICE:**  
 ACCORDING TO COLORADO STATE LAW YOU MUST COMMENCE ANY LEGAL ACTION BASED UPON ANY DEFECT IN THIS SURVEY WITHIN THREE YEARS AFTER YOU FIRST DISCOVER SUCH DEFECT. IN NO EVENT MAY ANY ACTION BASED UPON ANY DEFECT IN THIS SURVEY BE COMMENCED MORE THAN TEN YEARS FROM THE DATE ON THE CERTIFICATION SHOWN HEREON.

## WELL DISTANCES:

BUILDING: ±1018' NE  
 BUILDING UNIT: ±1018' NE  
 HIGH OCCUPANCY BUILDING UNIT: 5280'+  
 DESIGNATED OUTSIDE ACTIVITY AREA: 5280'+  
 PUBLIC ROAD: ±575' S  
 PROPERTY LINE: ±207' W  
 ABOVE GROUND UTILITY: ±595' S  
 RAILROAD: ±4501' S

## NOTES:

- ▲ INDICATES SECTION CORNER
- INDICATES CALCULATED CORNER
- DRAWING LATITUDE AND LONGITUDE COORDINATES ARE NAD 83 (2011)(EPOCH:2010)
- ELEVATION BASED ON NAVD88 (GEOID12B)
- BASIS OF BEARING DERIVED FROM COLORADO COORDINATE SYSTEM OF 1983 NORTH ZONE.
- ALL MEASURED DISTANCES ARE GRID.  
COMBINED SCALE FACTOR: .99974122 CALCULATED FROM THE SE. CORNER OF SECTION 20, T6N, R66W
- OPERATOR: ROB WILSON / PDOP = 1.4
- SEE ADDENDUM TO WELL LOCATION CERTIFICATE FOR EXISTING IMPROVEMENTS WITHIN 500' OF THE WELL PAD.
- WELL FOOTAGES ARE MEASURED AT RIGHT ANGLES TO THE SECTION LINES.
- THE BOTTOM OF HOLE BEARS N89°11'07"E, 7828' FROM THE TOP OF PRODUCTION ZONE.

## WELL PAD - HOOD-DOLES 37-20

HOOD 23C-22-M  
 WELL LOCATION CERTIFICATE  
 585' FSL & 1122' FEL SESE (SURFACE)  
 LOCATED IN SECTION 20  
 1221' FSL & 75' FWL SWSW (TOP OF PRODUCTION)  
 LOCATED IN SECTION 21  
 1177' FSL & 2608' FWL SESW (BOTTOM)  
 LOCATED IN SECTION 22  
 T6N, R66W, 6TH P.M.  
 WELD COUNTY, COLORADO



1625 Broadway, Suite 300  
 Denver, Colorado 80202



## CONSULTING, LLC

SHERIDAN OFFICE  
 1095 Saberton Avenue  
 Sheridan, Wyoming 82801  
 Phone 307-674-0609

LOVELAND OFFICE  
 1635 Foxtrail Drive, Suite 204  
 Loveland, Colorado 80538  
 Phone 970-776-4331

DRAFTED BY:	LMO	CHECKED BY:	JRS	SHEET NO:
DATE DRAFTED:	9/12/16	DATE SURVEYED:	7/7/16	2
REVISED:	10/24/16	FILE NAME:	16-80	2 OF 3

**T6N, R66W**

**CERTIFICATE OF SURVEYOR:**

THIS IS TO CERTIFY THAT THE ABOVE PLAT WAS PREPARED FROM FIELD NOTES OF ACTUAL SURVEY MADE BY ME OR UNDER MY SUPERVISION AND THAT THE SAME ARE TRUE AND CORRECT TO THE BEST OF MY KNOWLEDGE AND BELIEF. THIS CERTIFICATE DOES NOT REPRESENT A LAND SURVEY PLAT OR IMPROVEMENT SURVEY PLAT AS DEFINED BY G.S. 38-51-002 AND CANNOT BE USED TO DETERMINE A PROPERTY LINE.

AND CANNOT BE RELIED UPON TO DETERMINE OWNERSHIP.

38230

*John R. Slaugh*

JOHN R. SLAUGH  
PROFESSIONAL LAND SURVEYOR  
COLORADO REGISTRATION NUMBER 38230



10/24/16

**NOTICE:**  
ACCORDING TO COLORADO STATE LAW YOU MUST COMMENCE ANY LEGAL ACTION BASED UPON ANY DEFECT IN THIS SURVEY WITHIN THREE YEARS AFTER YOU FIRST DISCOVER SUCH DEFECT. IN NO EVENT MAY ANY ACTION BASED UPON ANY DEFECT IN THIS SURVEY BE COMMENCED MORE THAN TEN YEARS FROM THE DATE ON THE CERTIFICATION SHOWN HEREON.

**WELL DISTANCES:**

BUILDING: ±1018' NE  
BUILDING UNIT: ±1018' NE  
HIGH OCCUPANCY BUILDING UNIT: 5280'+  
DESIGNATED OUTSIDE ACTIVITY AREA: 5280'+  
PUBLIC ROAD: ±575' S  
PROPERTY LINE: ±207' W  
ABOVE GROUND UTILITY: ±595' S  
RAILROAD: ±4501' S

**NOTES:**

1.  INDICATES SECTION CORNER
2.  INDICATES CALCULATED CORNER
3. DRAWING LATITUDE AND LONGITUDE COORDINATES ARE NAD 83 (2011)(EPOCH:2010)
4. ELEVATION BASED ON NAVD88 (GEOID12B)
5. BASIS OF BEARING DERIVED FROM COLORADO COORDINATE SYSTEM OF 1983 NORTH ZONE.
6. ALL MEASURED DISTANCES ARE GRID.  
COMBINED SCALE FACTOR: .99974122 CALCULATED FROM THE SE. CORNER OF SECTION 20, T6N, R66W
7. OPERATOR: ROB WILSON / PDOP = 1.4
8. SEE ADDENDUM TO WELL LOCATION CERTIFICATE FOR EXISTING IMPROVEMENTS WITHIN 500' OF THE WELL PAD.
9. WELL FOOTAGES ARE MEASURED AT RIGHT ANGLES TO THE SECTION LINES.
10. THE BOTTOM OF HOLE BEARS N89°11'07"E, 7828' FROM THE TOP OF PRODUCTION ZONE.

## WELL PAD - HOOD-DOLES 37-20

HOOD 23C-22-M  
WELL LOCATION CERTIFICATE  
585' FSL & 1122' FEL SESE (SURFACE)  
1221' FSL & 75' FWL SWSW (TOP OF PRODUCTION)  
LOCATED IN SECTION 20  
1177' FSL & 2608' FWL SESW (BOTTOM)  
LOCATED IN SECTION 22  
T6N, R66W, 6TH P.M.  
WELD COUNTY, COLORADO



**1625 Broadway, Suite 300**  
**Denver, Colorado 80202**



**CONSULTING, LLC**

**SHERIDAN OFFICE**  
1095 Saberton Avenue  
Sheridan, Wyoming 82801  
Phone 307-674-0609

**LOVELAND OFFICE**  
1635 Foxtrail Drive, Suite 204  
Loveland, Colorado 80538  
Phone 970-776-4331

DRAFTED BY: LMO	CHECKED BY: JRS	SHEET NO: <div style="font-size: 2em; font-weight: bold; text-align: center;">3</div> 3 OF 3
DATE DRAFTED: 9/12/16	DATE SURVEYED: 7/7/16	
REVISED: 10/24/16	FILE NAME: 16-80	