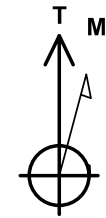




Project: SEC 20-T6N-R66W  
 Site: HOOD-DOLES 37-20 PAD  
 Well: HOOD 23N-22B-M  
 Wellbore: OH  
 Design: PLAN #1



Azimuths to True North  
 Magnetic North: 8.29°  
 Magnetic Field  
 Strength: 52482.4snT  
 Dip Angle: 66.92°  
 Date: 12/15/2016  
 Model: IGRF2015

#### SECTION DETAILS

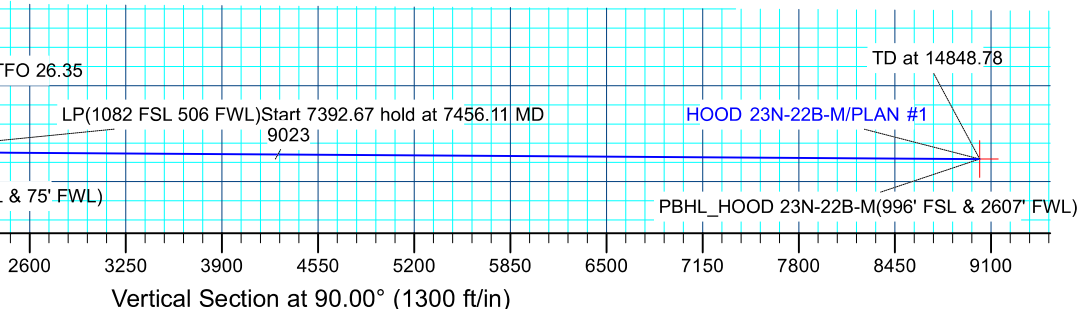
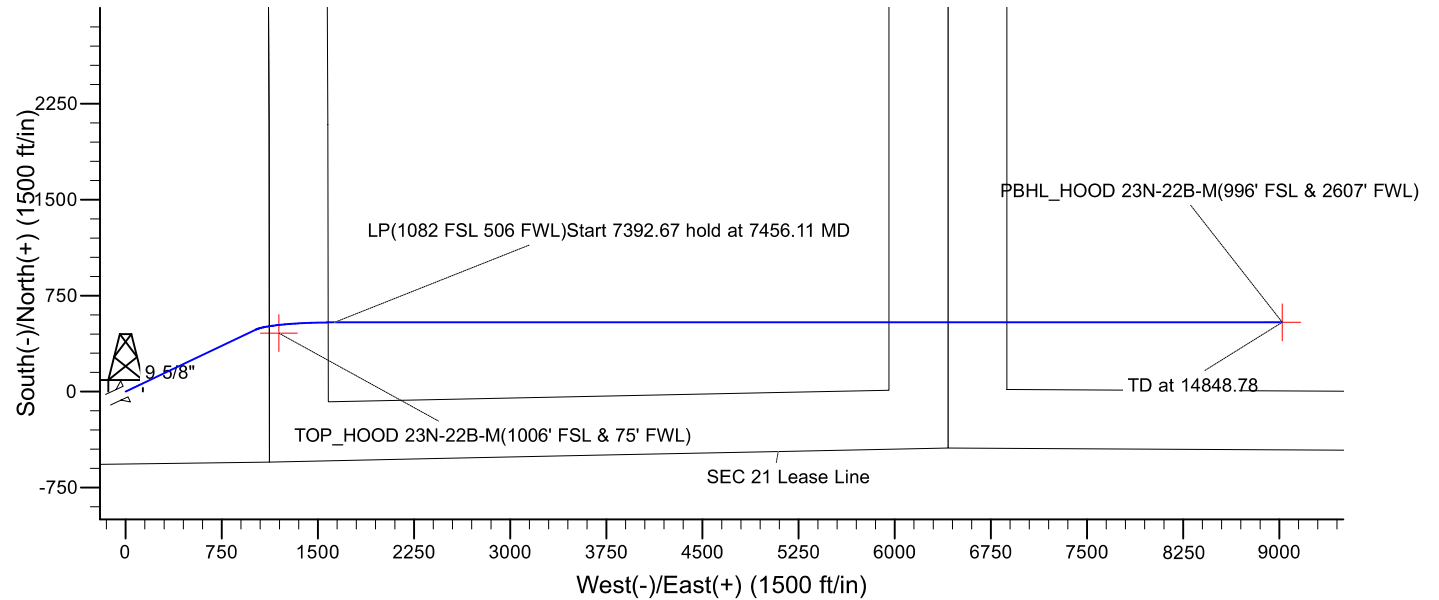
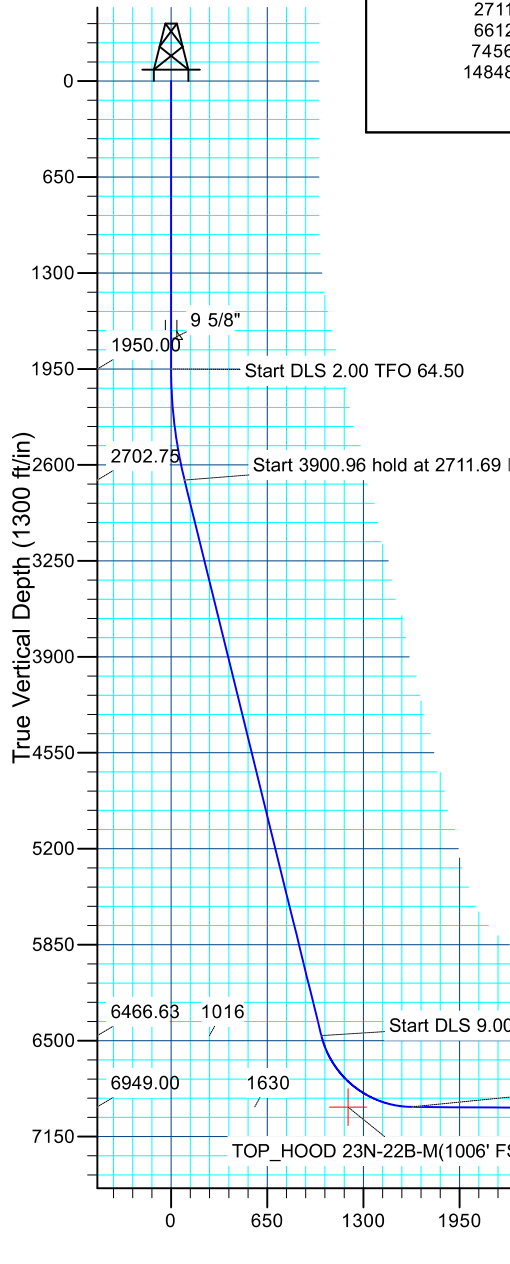
MD	Inc	Azi	TVD	+N/-S	+E/-W	Dleg	TFace	V Sect	Target
0.00	0.00	0.00	0.00	0.00	0.00	0.00	0.00	0.00	
1950.00	0.00	0.00	1950.00	0.00	0.00	0.00	0.00	0.00	
2711.69	15.23	64.50	2702.75	43.34	90.86	2.00	64.50	90.86	
6612.65	15.23	64.50	6466.63	484.65	1016.00	0.00	0.00	1016.00	
7456.11	89.63	90.00	6949.00	540.83	1630.35	9.00	26.35	1630.35	
14848.78	89.63	90.00	6997.00	540.83	9022.86	0.00	0.00	9022.86	PBHL

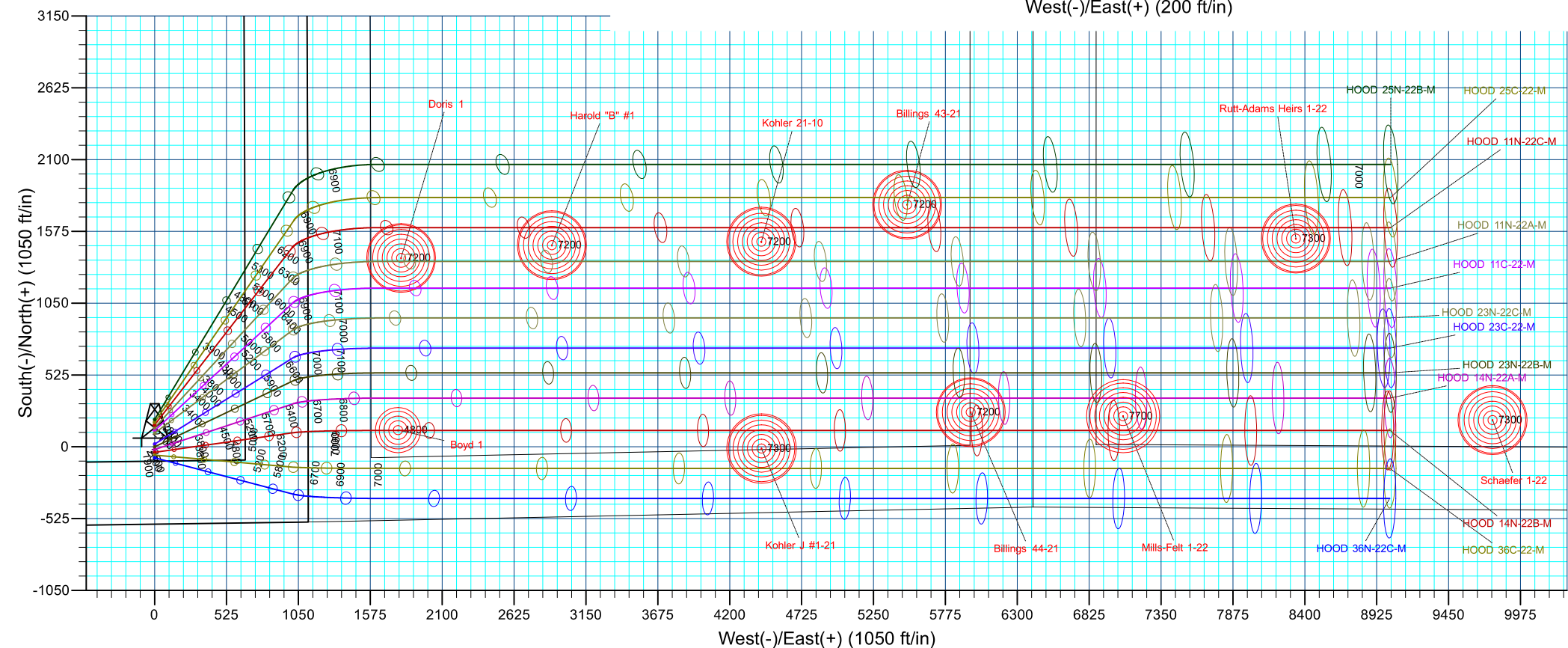
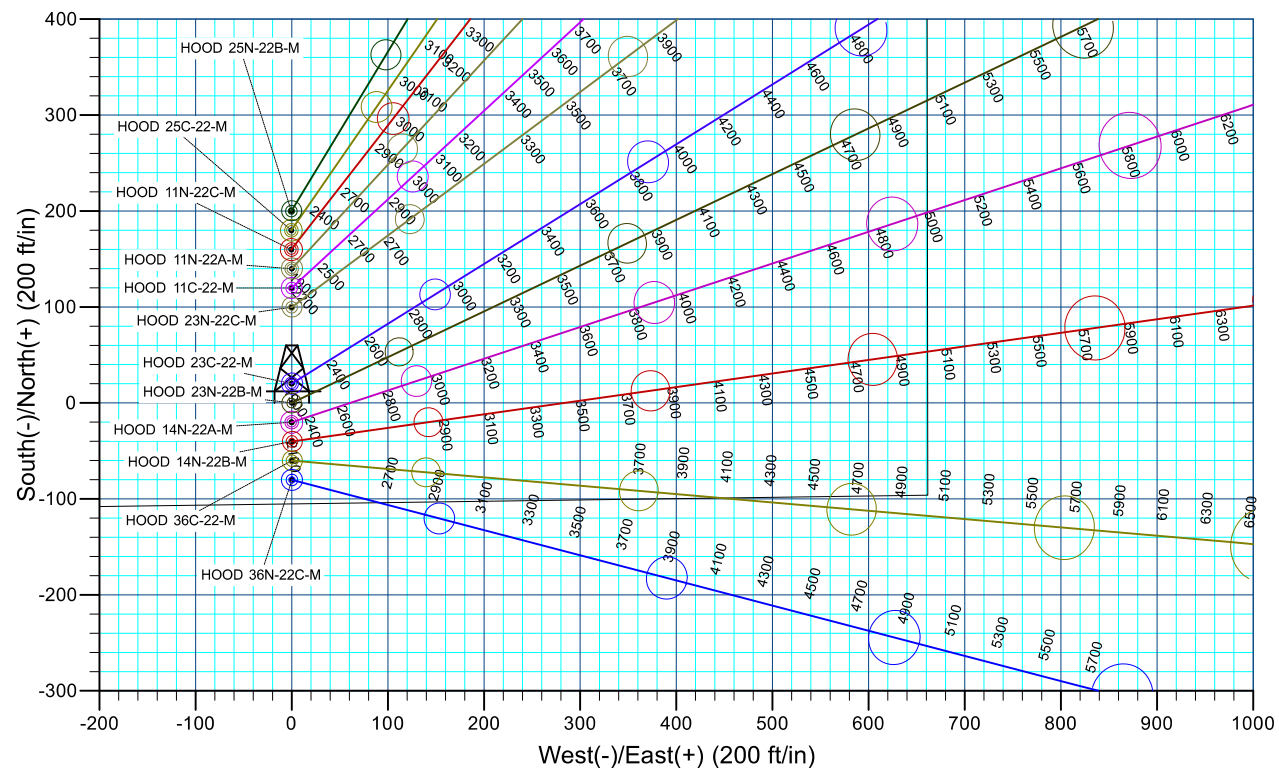
#### PROJECT DETAILS: SEC 20-T6N-R66W

Geodetic System: US State Plane 1983  
 Datum: North American Datum 1983  
 Ellipsoid: GRS 1980  
 Zone: Colorado Northern Zone  
 Colorado Northern Zone  
 System Datum: Mean Sea Level

#### CASING DETAILS

TVD	MD	Name	Size
1750.00	1750.00	9 5/8"	9.625







# **Synergy Resources Corporation**

**SEC 20-T6N-R66W**

**HOOD-DOLES 37-20 PAD**

**HOOD 23N-22B-M**

**OH**

**Plan: PLAN #1**

## **Standard Planning Report**

**16 December, 2016**

<b>Database:</b>	EDM 5000.14 Single User Db	<b>Local Co-ordinate Reference:</b>	Well HOOD 23N-22B-M
<b>Company:</b>	Synergy Resources Corporation	<b>TVD Reference:</b>	GL 4734 & 25' KB @ 4759.00ft ( ASSUMED)
<b>Project:</b>	SEC 20-T6N-R66W	<b>MD Reference:</b>	GL 4734 & 25' KB @ 4759.00ft ( ASSUMED)
<b>Site:</b>	HOOD-DOLES 37-20 PAD	<b>North Reference:</b>	True
<b>Well:</b>	HOOD 23N-22B-M	<b>Survey Calculation Method:</b>	Minimum Curvature
<b>Wellbore:</b>	OH		
<b>Design:</b>	PLAN #1		

<b>Project</b>	SEC 20-T6N-R66W		
<b>Map System:</b>	US State Plane 1983	<b>System Datum:</b>	Mean Sea Level
<b>Geo Datum:</b>	North American Datum 1983		
<b>Map Zone:</b>	Colorado Northern Zone		

Site	HOOD-DOLES 37-20 PAD				
Site Position:		Northing:	1,414,281.96 ft	Latitude:	40.4684660
From:	Lat/Long	Easting:	3,195,759.92 ft	Longitude:	-104.7964230
Position Uncertainty:	4.92 ft	Slot Radius:	13.200 in	Grid Convergence:	0.45 °

Well	HOOD 23N-22B-M, 565' FSL & 1122' FEL					
Well Position	+N/-S	-200.01 ft	Northing:	1,414,081.95 ft	Latitude:	40.4679170
	+E/-W	0.28 ft	Easting:	3,195,761.79 ft	Longitude:	-104.7964220
Position Uncertainty		3.28 ft	Wellhead Elevation:		Ground Level:	4,734.00 ft

<b>Wellbore</b>	OH				
-----------------	----	--	--	--	--

Magnetics	Model Name	Sample Date	Declination (°)	Dip Angle (°)	Field Strength (nT)
	IGRF2015	12/15/2016	8.29	66.92	52,482

<b>Design</b>	PLAN #1			
---------------	---------	--	--	--

<b>Audit Notes:</b>				
<b>Version:</b>	<b>Phase:</b>	PLAN	<b>Tie On Depth:</b>	0.00
<b>Vertical Section:</b>	<b>Depth From (TVD) (ft)</b>	<b>+N/-S (ft)</b>	<b>+E/-W (ft)</b>	<b>Direction (°)</b>
	0.00	0.00	0.00	90.00

<b>Plan Survey Tool Program</b>	<b>Date</b>	12/16/2016		
<b>Depth From (ft)</b>	<b>Depth To (ft)</b>	<b>Survey (Wellbore)</b>	<b>Tool Name</b>	<b>Remarks</b>
1	0.00	14,848.73	PLAN #1 (OH)	MWD+IFR1 OWSG MWD + IFR1

<b>Plan Sections</b>										
Measured Depth (ft)	Inclination (°)	Azimuth (°)	Vertical Depth (ft)	+N/-S (ft)	+E/-W (ft)	Dogleg Rate (°/100ft)	Build Rate (°/100ft)	Turn Rate (°/100ft)	TFO (°)	Target
0.00	0.00	0.00	0.00	0.00	0.00	0.00	0.00	0.00	0.00	
1,950.00	0.00	0.00	1,950.00	0.00	0.00	0.00	0.00	0.00	0.00	
2,711.69	15.23	64.50	2,702.75	43.34	90.86	2.00	2.00	8.47	64.50	
6,612.65	15.23	64.50	6,466.63	484.65	1,016.00	0.00	0.00	0.00	0.00	
7,456.11	89.63	90.00	6,949.00	540.83	1,630.35	9.00	8.82	3.02	26.35	
14,848.78	89.63	90.00	6,997.00	540.83	9,022.86	0.00	0.00	0.00	0.00	PBHL_HOOD 23N-

<b>Database:</b>	EDM 5000.14 Single User Db	<b>Local Co-ordinate Reference:</b>	Well HOOD 23N-22B-M
<b>Company:</b>	Synergy Resources Corporation	<b>TVD Reference:</b>	GL 4734 & 25' KB @ 4759.00ft ( ASSUMED)
<b>Project:</b>	SEC 20-T6N-R66W	<b>MD Reference:</b>	GL 4734 & 25' KB @ 4759.00ft ( ASSUMED)
<b>Site:</b>	HOOD-DOLES 37-20 PAD	<b>North Reference:</b>	True
<b>Well:</b>	HOOD 23N-22B-M	<b>Survey Calculation Method:</b>	Minimum Curvature
<b>Wellbore:</b>	OH		
<b>Design:</b>	PLAN #1		

Planned Survey									
Measured Depth (ft)	Inclination (°)	Azimuth (°)	Vertical Depth (ft)	+N/-S (ft)	+E/-W (ft)	Vertical Section (ft)	Dogleg Rate (°/100ft)	Build Rate (°/100ft)	Turn Rate (°/100ft)
0.00	0.00	0.00	0.00	0.00	0.00	0.00	0.00	0.00	0.00
1,750.00	0.00	0.00	1,750.00	0.00	0.00	0.00	0.00	0.00	0.00
<b>9 5/8"</b>									
1,950.00	0.00	0.00	1,950.00	0.00	0.00	0.00	0.00	0.00	0.00
<b>Start DLS 2.00 TFO 64.50</b>									
2,000.00	1.00	64.50	2,000.00	0.19	0.39	0.39	2.00	2.00	0.00
2,100.00	3.00	64.50	2,099.93	1.69	3.54	3.54	2.00	2.00	0.00
2,200.00	5.00	64.50	2,199.68	4.69	9.84	9.84	2.00	2.00	0.00
2,300.00	7.00	64.50	2,299.13	9.19	19.27	19.27	2.00	2.00	0.00
2,400.00	9.00	64.50	2,398.15	15.19	31.83	31.83	2.00	2.00	0.00
2,500.00	11.00	64.50	2,496.63	22.66	47.51	47.51	2.00	2.00	0.00
2,600.00	13.00	64.50	2,594.44	31.61	66.27	66.27	2.00	2.00	0.00
2,700.00	15.00	64.50	2,691.46	42.03	88.10	88.10	2.00	2.00	0.00
2,711.69	15.23	64.50	2,702.75	43.34	90.86	90.86	2.00	2.00	0.00
<b>Start 3900.96 hold at 2711.69 MD</b>									
2,800.00	15.23	64.50	2,787.95	53.33	111.80	111.80	0.00	0.00	0.00
2,900.00	15.23	64.50	2,884.44	64.64	135.52	135.52	0.00	0.00	0.00
3,000.00	15.23	64.50	2,980.93	75.96	159.23	159.23	0.00	0.00	0.00
3,100.00	15.23	64.50	3,077.41	87.27	182.95	182.95	0.00	0.00	0.00
3,200.00	15.23	64.50	3,173.90	98.58	206.66	206.66	0.00	0.00	0.00
3,300.00	15.23	64.50	3,270.39	109.89	230.38	230.38	0.00	0.00	0.00
3,400.00	15.23	64.50	3,366.87	121.21	254.09	254.09	0.00	0.00	0.00
3,500.00	15.23	64.50	3,463.36	132.52	277.81	277.81	0.00	0.00	0.00
3,600.00	15.23	64.50	3,559.84	143.83	301.53	301.53	0.00	0.00	0.00
3,700.00	15.23	64.50	3,656.33	155.15	325.24	325.24	0.00	0.00	0.00
3,800.00	15.23	64.50	3,752.82	166.46	348.96	348.96	0.00	0.00	0.00
3,900.00	15.23	64.50	3,849.30	177.77	372.67	372.67	0.00	0.00	0.00
4,000.00	15.23	64.50	3,945.79	189.08	396.39	396.39	0.00	0.00	0.00
4,100.00	15.23	64.50	4,042.27	200.40	420.11	420.11	0.00	0.00	0.00
4,200.00	15.23	64.50	4,138.76	211.71	443.82	443.82	0.00	0.00	0.00
4,300.00	15.23	64.50	4,235.25	223.02	467.54	467.54	0.00	0.00	0.00
4,400.00	15.23	64.50	4,331.73	234.34	491.25	491.25	0.00	0.00	0.00
4,500.00	15.23	64.50	4,428.22	245.65	514.97	514.97	0.00	0.00	0.00
4,600.00	15.23	64.50	4,524.71	256.96	538.68	538.68	0.00	0.00	0.00
4,700.00	15.23	64.50	4,621.19	268.27	562.40	562.40	0.00	0.00	0.00
4,800.00	15.23	64.50	4,717.68	279.59	586.12	586.12	0.00	0.00	0.00
4,900.00	15.23	64.50	4,814.16	290.90	609.83	609.83	0.00	0.00	0.00
5,000.00	15.23	64.50	4,910.65	302.21	633.55	633.55	0.00	0.00	0.00
5,100.00	15.23	64.50	5,007.14	313.53	657.26	657.26	0.00	0.00	0.00
5,200.00	15.23	64.50	5,103.62	324.84	680.98	680.98	0.00	0.00	0.00
5,300.00	15.23	64.50	5,200.11	336.15	704.70	704.70	0.00	0.00	0.00
5,400.00	15.23	64.50	5,296.59	347.46	728.41	728.41	0.00	0.00	0.00
5,500.00	15.23	64.50	5,393.08	358.78	752.13	752.13	0.00	0.00	0.00
5,600.00	15.23	64.50	5,489.57	370.09	775.84	775.84	0.00	0.00	0.00
5,700.00	15.23	64.50	5,586.05	381.40	799.56	799.56	0.00	0.00	0.00
5,800.00	15.23	64.50	5,682.54	392.72	823.27	823.27	0.00	0.00	0.00
5,900.00	15.23	64.50	5,779.03	404.03	846.99	846.99	0.00	0.00	0.00
6,000.00	15.23	64.50	5,875.51	415.34	870.71	870.71	0.00	0.00	0.00
6,100.00	15.23	64.50	5,972.00	426.66	894.42	894.42	0.00	0.00	0.00
6,200.00	15.23	64.50	6,068.48	437.97	918.14	918.14	0.00	0.00	0.00
6,300.00	15.23	64.50	6,164.97	449.28	941.85	941.85	0.00	0.00	0.00
6,400.00	15.23	64.50	6,261.46	460.59	965.57	965.57	0.00	0.00	0.00
6,500.00	15.23	64.50	6,357.94	471.91	989.29	989.29	0.00	0.00	0.00

<b>Database:</b>	EDM 5000.14 Single User Db	<b>Local Co-ordinate Reference:</b>	Well HOOD 23N-22B-M
<b>Company:</b>	Synergy Resources Corporation	<b>TVD Reference:</b>	GL 4734 & 25' KB @ 4759.00ft ( ASSUMED)
<b>Project:</b>	SEC 20-T6N-R66W	<b>MD Reference:</b>	GL 4734 & 25' KB @ 4759.00ft ( ASSUMED)
<b>Site:</b>	HOOD-DOLES 37-20 PAD	<b>North Reference:</b>	True
<b>Well:</b>	HOOD 23N-22B-M	<b>Survey Calculation Method:</b>	Minimum Curvature
<b>Wellbore:</b>	OH		
<b>Design:</b>	PLAN #1		

Planned Survey									
Measured Depth (ft)	Inclination (°)	Azimuth (°)	Vertical Depth (ft)	+N/-S (ft)	+E/-W (ft)	Vertical Section (ft)	Dogleg Rate (°/100ft)	Build Rate (°/100ft)	Turn Rate (°/100ft)
6,600.00	15.23	64.50	6,454.43	483.22	1,013.00	1,013.00	0.00	0.00	0.00
6,612.65	15.23	64.50	6,466.63	484.65	1,016.00	1,016.00	0.00	0.00	0.00
<b>Start DLS 9.00 TFO 26.35</b>									
6,700.00	22.54	73.61	6,549.24	494.33	1,042.46	1,042.46	9.00	8.37	10.43
6,800.00	31.23	78.88	6,638.36	504.76	1,086.38	1,086.38	9.00	8.69	5.27
6,900.00	40.05	82.01	6,719.56	514.26	1,143.80	1,143.80	9.00	8.82	3.14
7,000.00	48.92	84.17	6,790.83	522.57	1,213.29	1,213.29	9.00	8.87	2.16
7,100.00	57.82	85.81	6,850.44	529.51	1,293.16	1,293.16	9.00	8.90	1.64
7,200.00	66.74	87.15	6,896.90	534.90	1,381.43	1,381.43	9.00	8.92	1.34
7,300.00	75.68	88.33	6,929.08	538.61	1,475.93	1,475.93	9.00	8.93	1.17
7,400.00	84.61	89.41	6,946.18	540.54	1,574.33	1,574.33	9.00	8.94	1.08
7,456.11	89.63	90.00	6,949.00	540.83	1,630.35	1,630.35	9.00	8.94	1.05
<b>LP(1082 FSL 506 FWL)Start 7392.67 hold at 7456.11 MD</b>									
7,500.00	89.63	90.00	6,949.28	540.83	1,674.24	1,674.24	0.00	0.00	0.00
7,600.00	89.63	90.00	6,949.93	540.83	1,774.24	1,774.24	0.00	0.00	0.00
7,700.00	89.63	90.00	6,950.58	540.83	1,874.24	1,874.24	0.00	0.00	0.00
7,800.00	89.63	90.00	6,951.23	540.83	1,974.24	1,974.24	0.00	0.00	0.00
7,900.00	89.63	90.00	6,951.88	540.83	2,074.23	2,074.23	0.00	0.00	0.00
8,000.00	89.63	90.00	6,952.53	540.83	2,174.23	2,174.23	0.00	0.00	0.00
8,100.00	89.63	90.00	6,953.18	540.83	2,274.23	2,274.23	0.00	0.00	0.00
8,200.00	89.63	90.00	6,953.83	540.83	2,374.23	2,374.23	0.00	0.00	0.00
8,300.00	89.63	90.00	6,954.48	540.83	2,474.23	2,474.23	0.00	0.00	0.00
8,400.00	89.63	90.00	6,955.13	540.83	2,574.22	2,574.22	0.00	0.00	0.00
8,500.00	89.63	90.00	6,955.78	540.83	2,674.22	2,674.22	0.00	0.00	0.00
8,600.00	89.63	90.00	6,956.42	540.83	2,774.22	2,774.22	0.00	0.00	0.00
8,700.00	89.63	90.00	6,957.07	540.83	2,874.22	2,874.22	0.00	0.00	0.00
8,800.00	89.63	90.00	6,957.72	540.83	2,974.22	2,974.22	0.00	0.00	0.00
8,900.00	89.63	90.00	6,958.37	540.83	3,074.21	3,074.21	0.00	0.00	0.00
9,000.00	89.63	90.00	6,959.02	540.83	3,174.21	3,174.21	0.00	0.00	0.00
9,100.00	89.63	90.00	6,959.67	540.83	3,274.21	3,274.21	0.00	0.00	0.00
9,200.00	89.63	90.00	6,960.32	540.83	3,374.21	3,374.21	0.00	0.00	0.00
9,300.00	89.63	90.00	6,960.97	540.83	3,474.20	3,474.20	0.00	0.00	0.00
9,400.00	89.63	90.00	6,961.62	540.83	3,574.20	3,574.20	0.00	0.00	0.00
9,500.00	89.63	90.00	6,962.27	540.83	3,674.20	3,674.20	0.00	0.00	0.00
9,600.00	89.63	90.00	6,962.92	540.83	3,774.20	3,774.20	0.00	0.00	0.00
9,700.00	89.63	90.00	6,963.57	540.83	3,874.20	3,874.20	0.00	0.00	0.00
9,800.00	89.63	90.00	6,964.22	540.83	3,974.19	3,974.19	0.00	0.00	0.00
9,900.00	89.63	90.00	6,964.87	540.83	4,074.19	4,074.19	0.00	0.00	0.00
10,000.00	89.63	90.00	6,965.52	540.83	4,174.19	4,174.19	0.00	0.00	0.00
10,100.00	89.63	90.00	6,966.16	540.83	4,274.19	4,274.19	0.00	0.00	0.00
10,200.00	89.63	90.00	6,966.81	540.83	4,374.19	4,374.19	0.00	0.00	0.00
10,300.00	89.63	90.00	6,967.46	540.83	4,474.18	4,474.18	0.00	0.00	0.00
10,400.00	89.63	90.00	6,968.11	540.83	4,574.18	4,574.18	0.00	0.00	0.00
10,500.00	89.63	90.00	6,968.76	540.83	4,674.18	4,674.18	0.00	0.00	0.00
10,600.00	89.63	90.00	6,969.41	540.83	4,774.18	4,774.18	0.00	0.00	0.00
10,700.00	89.63	90.00	6,970.06	540.83	4,874.18	4,874.18	0.00	0.00	0.00
10,800.00	89.63	90.00	6,970.71	540.83	4,974.17	4,974.17	0.00	0.00	0.00
10,900.00	89.63	90.00	6,971.36	540.83	5,074.17	5,074.17	0.00	0.00	0.00
11,000.00	89.63	90.00	6,972.01	540.83	5,174.17	5,174.17	0.00	0.00	0.00
11,100.00	89.63	90.00	6,972.66	540.83	5,274.17	5,274.17	0.00	0.00	0.00
11,200.00	89.63	90.00	6,973.31	540.83	5,374.16	5,374.16	0.00	0.00	0.00
11,300.00	89.63	90.00	6,973.96	540.83	5,474.16	5,474.16	0.00	0.00	0.00
11,400.00	89.63	90.00	6,974.61	540.83	5,574.16	5,574.16	0.00	0.00	0.00
11,500.00	89.63	90.00	6,975.26	540.83	5,674.16	5,674.16	0.00	0.00	0.00

<b>Database:</b>	EDM 5000.14 Single User Db	<b>Local Co-ordinate Reference:</b>	Well HOOD 23N-22B-M
<b>Company:</b>	Synergy Resources Corporation	<b>TVD Reference:</b>	GL 4734 & 25' KB @ 4759.00ft ( ASSUMED)
<b>Project:</b>	SEC 20-T6N-R66W	<b>MD Reference:</b>	GL 4734 & 25' KB @ 4759.00ft ( ASSUMED)
<b>Site:</b>	HOOD-DOLES 37-20 PAD	<b>North Reference:</b>	True
<b>Well:</b>	HOOD 23N-22B-M	<b>Survey Calculation Method:</b>	Minimum Curvature
<b>Wellbore:</b>	OH		
<b>Design:</b>	PLAN #1		

Planned Survey									
Measured Depth (ft)	Inclination (°)	Azimuth (°)	Vertical Depth (ft)	+N/-S (ft)	+E/-W (ft)	Vertical Section (ft)	Dogleg Rate (°/100ft)	Build Rate (°/100ft)	Turn Rate (°/100ft)
11,600.00	89.63	90.00	6,975.90	540.83	5,774.16	5,774.16	0.00	0.00	0.00
11,700.00	89.63	90.00	6,976.55	540.83	5,874.15	5,874.15	0.00	0.00	0.00
11,800.00	89.63	90.00	6,977.20	540.83	5,974.15	5,974.15	0.00	0.00	0.00
11,900.00	89.63	90.00	6,977.85	540.83	6,074.15	6,074.15	0.00	0.00	0.00
12,000.00	89.63	90.00	6,978.50	540.83	6,174.15	6,174.15	0.00	0.00	0.00
12,100.00	89.63	90.00	6,979.15	540.83	6,274.15	6,274.15	0.00	0.00	0.00
12,200.00	89.63	90.00	6,979.80	540.83	6,374.14	6,374.14	0.00	0.00	0.00
12,300.00	89.63	90.00	6,980.45	540.83	6,474.14	6,474.14	0.00	0.00	0.00
12,400.00	89.63	90.00	6,981.10	540.83	6,574.14	6,574.14	0.00	0.00	0.00
12,500.00	89.63	90.00	6,981.75	540.83	6,674.14	6,674.14	0.00	0.00	0.00
12,600.00	89.63	90.00	6,982.40	540.83	6,774.14	6,774.14	0.00	0.00	0.00
12,700.00	89.63	90.00	6,983.05	540.83	6,874.13	6,874.13	0.00	0.00	0.00
12,800.00	89.63	90.00	6,983.70	540.83	6,974.13	6,974.13	0.00	0.00	0.00
12,900.00	89.63	90.00	6,984.35	540.83	7,074.13	7,074.13	0.00	0.00	0.00
13,000.00	89.63	90.00	6,985.00	540.83	7,174.13	7,174.13	0.00	0.00	0.00
13,100.00	89.63	90.00	6,985.64	540.83	7,274.12	7,274.12	0.00	0.00	0.00
13,200.00	89.63	90.00	6,986.29	540.83	7,374.12	7,374.12	0.00	0.00	0.00
13,300.00	89.63	90.00	6,986.94	540.83	7,474.12	7,474.12	0.00	0.00	0.00
13,400.00	89.63	90.00	6,987.59	540.83	7,574.12	7,574.12	0.00	0.00	0.00
13,500.00	89.63	90.00	6,988.24	540.83	7,674.12	7,674.12	0.00	0.00	0.00
13,600.00	89.63	90.00	6,988.89	540.83	7,774.11	7,774.11	0.00	0.00	0.00
13,700.00	89.63	90.00	6,989.54	540.83	7,874.11	7,874.11	0.00	0.00	0.00
13,800.00	89.63	90.00	6,990.19	540.83	7,974.11	7,974.11	0.00	0.00	0.00
13,900.00	89.63	90.00	6,990.84	540.83	8,074.11	8,074.11	0.00	0.00	0.00
14,000.00	89.63	90.00	6,991.49	540.83	8,174.11	8,174.11	0.00	0.00	0.00
14,100.00	89.63	90.00	6,992.14	540.83	8,274.10	8,274.10	0.00	0.00	0.00
14,200.00	89.63	90.00	6,992.79	540.83	8,374.10	8,374.10	0.00	0.00	0.00
14,300.00	89.63	90.00	6,993.44	540.83	8,474.10	8,474.10	0.00	0.00	0.00
14,400.00	89.63	90.00	6,994.09	540.83	8,574.10	8,574.10	0.00	0.00	0.00
14,500.00	89.63	90.00	6,994.74	540.83	8,674.10	8,674.10	0.00	0.00	0.00
14,600.00	89.63	90.00	6,995.38	540.83	8,774.09	8,774.09	0.00	0.00	0.00
14,700.00	89.63	90.00	6,996.03	540.83	8,874.09	8,874.09	0.00	0.00	0.00
14,800.00	89.63	90.00	6,996.68	540.83	8,974.09	8,974.09	0.00	0.00	0.00
14,848.78	89.63	90.00	6,997.00	540.83	9,022.86	9,022.86	0.00	0.00	0.00
TD at 14848.78									

Design Targets									
Target Name									
- hit/miss target	Dip Angle (°)	Dip Dir. (°)	TVD (ft)	+N/-S (ft)	+E/-W (ft)	Northing (ft)	Easting (ft)	Latitude	Longitude
- Shape									
TOP_HOOD 23N-22B	0.00	0.00	6,949.00	457.61	1,196.10	1,414,549.03	3,196,954.21	40.4691730	-104.7921230
- plan misses target center by 152.88ft at 7076.19ft MD (6837.39 TVD, 527.99 N, 1273.30 E)									
- Point									
PBHL_HOOD 23N-22	0.00	0.00	6,997.00	540.83	9,022.86	1,414,694.36	3,204,780.07	40.4693970	-104.7639920
- plan hits target center									
- Point									



<b>Database:</b>	EDM 5000.14 Single User Db	<b>Local Co-ordinate Reference:</b>	Well HOOD 23N-22B-M
<b>Company:</b>	Synergy Resources Corporation	<b>TVD Reference:</b>	GL 4734 & 25' KB @ 4759.00ft ( ASSUMED)
<b>Project:</b>	SEC 20-T6N-R66W	<b>MD Reference:</b>	GL 4734 & 25' KB @ 4759.00ft ( ASSUMED)
<b>Site:</b>	HOOD-DOLES 37-20 PAD	<b>North Reference:</b>	True
<b>Well:</b>	HOOD 23N-22B-M	<b>Survey Calculation Method:</b>	Minimum Curvature
<b>Wellbore:</b>	OH		
<b>Design:</b>	PLAN #1		

Casing Points					
Measured Depth (ft)	Vertical Depth (ft)	Name		Casing Diameter (in)	Hole Diameter (in)
1,750.00	1,750.00	9 5/8"		9.625	13.500

Plan Annotations					
Measured Depth (ft)	Vertical Depth (ft)	Local Coordinates		Comment	
		+N/-S (ft)	+E/-W (ft)		
1,950.00	1,950.00	0.00	0.00	Start DLS 2.00 TFO 64.50	
2,711.69	2,702.75	43.34	90.86	Start 3900.96 hold at 2711.69 MD	
6,612.65	6,466.63	484.65	1,016.00	Start DLS 9.00 TFO 26.35	
7,456.11	6,949.00	540.83	1,630.35	LP(1082 FSL 506 FWL)Start 7392.67 hold at 7456.11 MD	
14,848.78	6,997.00	540.83	9,022.86	TD at 14848.78	