

# T6N, R66W

NW. COR.  
SEC. 20, T6N, R66W  
FOUND 2 1/2" ALUM. CAP  
L.S. NO. 30462

S 88°03'08" W  
1324.42' (M)

S 88°02'38" W  
1324.25' (M)

S 88°42'56" W 2640.71' (M)

NE. COR.  
SEC. 20, T6N, R66W  
SET 2 1/2" ALUM. CAP  
L.S. NO. 38230

MATCH LINE  
SEE SHEET 2

W. 1/16 COR.  
SEC. 20 & SEC. 17, T6N, R66W  
SET 2 1/2" ALUM. CAP  
L.S. NO. 38230

N. 1/4 COR.  
SEC. 20, T6N, R66W  
FOUND 3 1/4" ALUM. CAP  
WITNESS COR 39' SOUTH  
OF CORNER POSITION  
L.S. NO. 22098

SURFACE LOCATION  
GROUND ELEVATION= 4735.5'  
LATITUDE= 40.467917°  
LONGITUDE= -104.796422°  
1/4 1/4: SE 1/4 SE 1/4

TOP OF PRODUCTION  
LATITUDE= 40.469173°  
LONGITUDE= -104.792123°  
1/4 1/4: SW 1/4 SW 1/4

BOTTOM HOLE LOCATION  
LATITUDE= 40.469397°  
LONGITUDE= -104.763992°  
1/4 1/4: SE 1/4 SW 1/4

W. 1/4 COR.  
SEC. 20, T6N, R66W  
FOUND 3 1/4" ALUM. CAP  
WITNESS COR 200' SOUTH  
OF CORNER POSITION  
L.S. NO. 33642

S 88°26'19" W  
2659.00' (C)

S 88°26'19" W  
2653.82' (C)

E. 1/4 COR.  
SEC. 20, T6N, R66W  
FOUND 3 1/4" ALUM. CAP  
L.S. NO. 22098

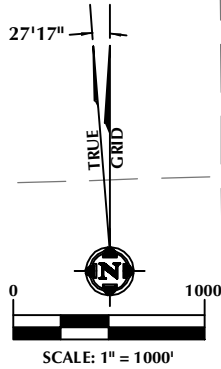
20

HOOD 23N-22B-M

SURFACE LOCATION

460' BUFFER

WELL BORE  
CONTINUES  
INTO SECTION 21



SW. COR.  
SEC. 20, T6N, R66W  
FOUND 3 1/4" ALUM. CAP  
L.S. NO. 16154

S 87°56'37" W  
1335.19' (M)

S 87°56'07" W  
1335.22' (M)

S 88°45'03" W  
1328.44' (M)

S 88°45'11" W  
1328.53' (M)

SE. COR.  
SEC. 20, T6N, R66W  
FOUND 2 1/2" ALUM. CAP  
L.S. NO. 28285

W. 1/16 COR.  
SEC. 20 & SEC. 29, T6N, R66W  
FOUND 2 1/2" ALUM. CAP  
L.S. NO. 9644

S. 1/4 COR.  
SEC. 20, T6N, R66W  
FOUND 2 1/2" ALUM. CAP  
L.S. NO. 23501

E. 1/16 COR.  
SEC. 20 & SEC. 29, T6N, R66W  
FOUND 3 1/4" ALUM. CAP  
L.S. NO. 4392

## CERTIFICATE OF SURVEYOR:

THIS IS TO CERTIFY THAT THE ABOVE PLAT WAS PREPARED FROM FIELD NOTES OF ACTUAL SURVEY MADE BY ME OR UNDER MY SUPERVISION AND THAT THE SAME ARE TRUE AND CORRECT TO THE BEST OF MY KNOWLEDGE AND BELIEF. THIS CERTIFICATE DOES NOT REPRESENT A LAND SURVEY PLAT OR IMPROVEMENT SURVEY PLAT AS DEFINED BY C.R.S. 38-51-102 AND CANNOT BE RELIED UPON TO DETERMINE OWNERSHIP.

JOHN R. SLAUGH  
PROFESSIONAL LAND SURVEYOR  
COLORADO REGISTRATION NUMBER 18230

NOTICE:  
ACCORDING TO COLORADO STATE LAW YOU MUST COMMENCE ANY LEGAL ACTION BASED UPON ANY DEFECT IN THIS SURVEY WITHIN THREE YEARS AFTER YOU FIRST DISCOVER SUCH DEFECT. IN NO EVENT MAY ANY ACTION BASED UPON ANY DEFECT IN THIS SURVEY BE COMMENCED MORE THAN TEN YEARS FROM THE DATE ON THE CERTIFICATION SHOWN HEREON.

## WELL DISTANCES:

BUILDING: ±1026' NE  
BUILDING UNIT: ±1026' NE  
HIGH OCCUPANCY BUILDING UNIT: 5280'+  
DESIGNATED OUTSIDE ACTIVITY AREA: 5280'+  
PUBLIC ROAD: ±555' S  
PROPERTY LINE: ±207' W  
ABOVE GROUND UTILITY: ±576' S  
RAILROAD: ±4481' S

## NOTES:

- ▲ INDICATES SECTION CORNER
- INDICATES CALCULATED CORNER
- DRAWING LATITUDE AND LONGITUDE COORDINATES ARE NAD 83 (2011)(EPOCH:2010)
- ELEVATION BASED ON NAVD88 (GEOID12B)
- BASIS OF BEARING DERIVED FROM COLORADO COORDINATE SYSTEM OF 1983 NORTH ZONE.
- ALL MEASURED DISTANCES ARE GRID.  
COMBINED SCALE FACTOR: .99974122 CALCULATED FROM THE SE. CORNER OF SECTION 20, T6N, R66W
- OPERATOR: ROB WILSON / PDOP = 1.4
- SEE ADDENDUM TO WELL LOCATION CERTIFICATE FOR EXISTING IMPROVEMENTS WITHIN 500' OF THE WELL PAD.
- WELL FOOTAGES ARE MEASURED AT RIGHT ANGLES TO THE SECTION LINES.
- THE BOTTOM OF HOLE BEARS N88°56'09"E, 7827' FROM THE TOP OF PRODUCTION ZONE.

## WELL PAD - HOOD-DOLES 37-20

HOOD 23N-22B-M  
WELL LOCATION CERTIFICATE  
565' FSL & 1122' FEL SESE (SURFACE)  
LOCATED IN SECTION 20  
1006' FSL & 75' FWL SWSW (TOP OF PRODUCTION)  
LOCATED IN SECTION 21  
996' FSL & 2607' FWL SESW (BOTTOM)  
LOCATED IN SECTION 22  
T6N, R66W, 6TH P.M.  
WELD COUNTY, COLORADO



1625 Broadway, Suite 300  
Denver, Colorado 80202



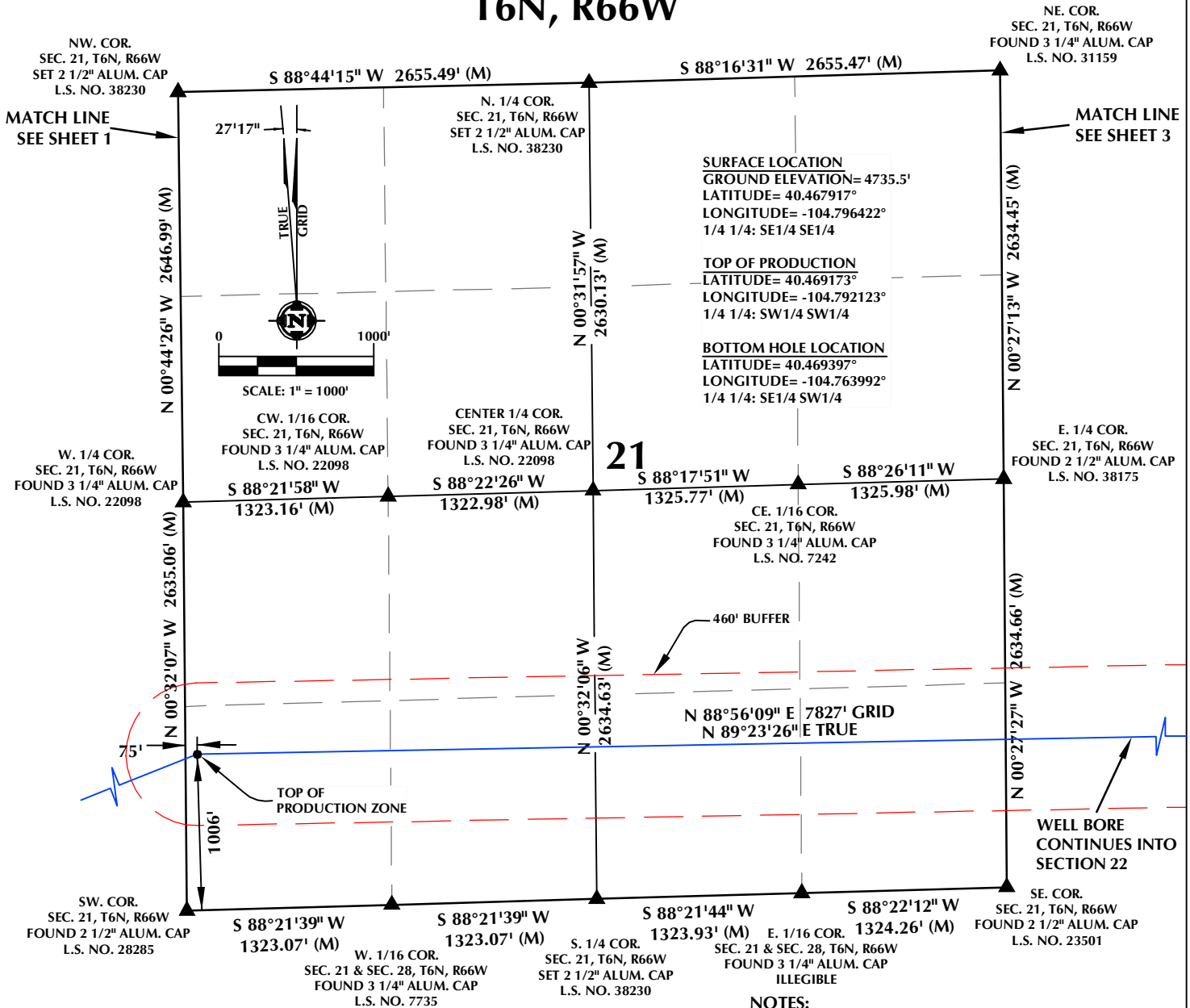
## CONSULTING, LLC

SHERIDAN OFFICE  
1095 Saberton Avenue  
Sheridan, Wyoming 82801  
Phone 307-674-0609

LOVELAND OFFICE  
1635 Foxtrail Drive, Suite 204  
Loveland, Colorado 80538  
Phone 970-776-4331

DRAFTED BY:	LMO	CHECKED BY:	JRS	SHEET NO:
DATE DRAFTED:	9/12/16	DATE SURVEYED:	7/7/16	1
REVISED:	10/24/16	FILE NAME:	16-80	1 OF 3

# T6N, R66W



## CERTIFICATE OF SURVEYOR:

THIS IS TO CERTIFY THAT THE ABOVE PLAT WAS PREPARED FROM FIELD NOTES OF ACTUAL SURVEY MADE BY ME OR UNDER MY SUPERVISION AND THAT THE SAME ARE TRUE AND CORRECT TO THE BEST OF MY KNOWLEDGE AND BELIEF. THIS CERTIFICATE DOES NOT REPRESENT A LAND SURVEY PLAT OR IMPROVEMENT SURVEY PLAT AS DEFINED BY C.R.S. 38-51-102 AND CANNOT BE RELIED UPON TO DETERMINE OWNERSHIP.

JOHN R. SLAUGH  
PROFESSIONAL LAND SURVEYOR  
COLORADO REGISTRATION NUMBER 38230

NOTICE:  
ACCORDING TO COLORADO STATE LAW YOU MUST COMMENCE ANY LEGAL ACTION BASED UPON ANY DEFECT IN THIS SURVEY WITHIN THREE YEARS AFTER YOU FIRST DISCOVER SUCH DEFECT. IN NO EVENT MAY ANY ACTION BASED UPON ANY DEFECT IN THIS SURVEY BE COMMENCED MORE THAN TEN YEARS FROM THE DATE ON THE CERTIFICATION SHOWN HEREON.

## WELL DISTANCES:

BUILDING: ±1026' NE  
BUILDING UNIT: ±1026' NE  
HIGH OCCUPANCY BUILDING UNIT: 5280'+  
DESIGNATED OUTSIDE ACTIVITY AREA: 5280'+  
PUBLIC ROAD: ±555' S  
PROPERTY LINE: ±207' W  
ABOVE GROUND UTILITY: ±576' S  
RAILROAD: ±4481' S

## NOTES:

- ▲ INDICATES SECTION CORNER
- INDICATES CALCULATED CORNER
- DRAWING LATITUDE AND LONGITUDE COORDINATES ARE NAD 83 (2011)(EPOCH:2010)
- ELEVATION BASED ON NAVD88 (GEOID12B)
- BASIS OF BEARING DERIVED FROM COLORADO COORDINATE SYSTEM OF 1983 NORTH ZONE.
- ALL MEASURED DISTANCES ARE GRID.  
COMBINED SCALE FACTOR: .99974122 CALCULATED FROM THE SE. CORNER OF SECTION 20, T6N, R66W
- OPERATOR: ROB WILSON / PDOP = 1.4
- SEE ADDENDUM TO WELL LOCATION CERTIFICATE FOR EXISTING IMPROVEMENTS WITHIN 500' OF THE WELL PAD.
- WELL FOOTAGES ARE MEASURED AT RIGHT ANGLES TO THE SECTION LINES.
- THE BOTTOM OF HOLE BEARS N88°56'09"E, 7827' FROM THE TOP OF PRODUCTION ZONE.

## WELL PAD - HOOD-DOLES 37-20

HOOD 23N-22B-M  
WELL LOCATION CERTIFICATE  
565' FSL & 1122' FEL SESE (SURFACE)  
LOCATED IN SECTION 20  
1006' FSL & 75' FWL SWSW (TOP OF PRODUCTION)  
LOCATED IN SECTION 21  
996' FSL & 2607' FWL SESW (BOTTOM)  
LOCATED IN SECTION 22  
T6N, R66W, 6TH P.M.  
WELD COUNTY, COLORADO



1625 Broadway, Suite 300  
Denver, Colorado 80202



## CONSULTING, LLC

SHERIDAN OFFICE  
1095 Saberton Avenue  
Sheridan, Wyoming 82801  
Phone 307-674-0609

LOVELAND OFFICE  
1635 Foxtrail Drive, Suite 204  
Loveland, Colorado 80538  
Phone 970-776-4331

DRAFTED BY:	LMO	CHECKED BY:	JRS	SHEET NO:
DATE DRAFTED:	9/12/16	DATE SURVEYED:	7/7/16	2
REVISED:	10/24/16	FILE NAME:	16-80	2 OF 3

