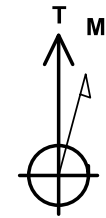




Project: SEC 20-T6N-R66W
 Site: HOOD-DOLES 37-20 PAD
 Well: HOOD 36C-22-M
 Wellbore: OH
 Design: PLAN #2



Azimuths to True North
 Magnetic North: 8.29°

Magnetic Field
 Strength: 52482.3snT
 Dip Angle: 66.92°
 Date: 12/15/2016
 Model: IGRF2015

SECTION DETAILS

MD	Inc	Azi	TVD	+N/-S	+E/-W	Dleg	TFace	V Sect	Target
0.00	0.00	0.00	0.00	0.00	0.00	0.00	0.00	0.00	
1850.00	0.00	0.00	1850.00	0.00	0.00	0.00	0.00	0.00	
2490.51	12.81	94.13	2485.18	-5.13	71.12	2.00	94.13	71.12	
6749.59	12.81	94.13	6638.26	-73.08	1013.00	0.00	0.001013.00		
7603.82	89.66	90.12	7134.00	-82.21	1630.05	9.00	-4.111630.05		
14994.26	89.66	90.12	7178.00	-97.79	9020.34	0.00	0.009020.34		

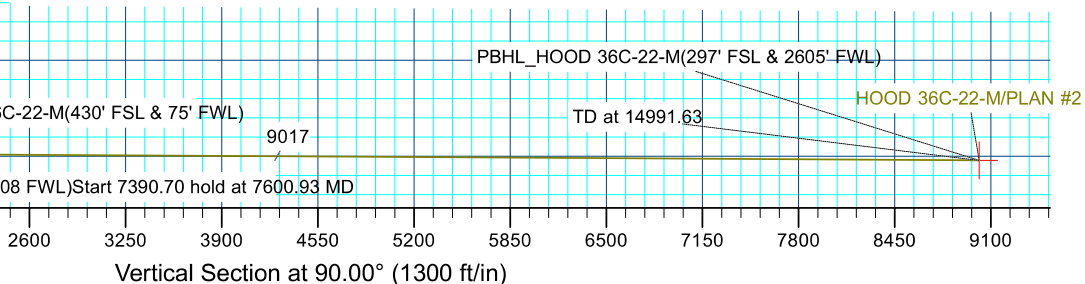
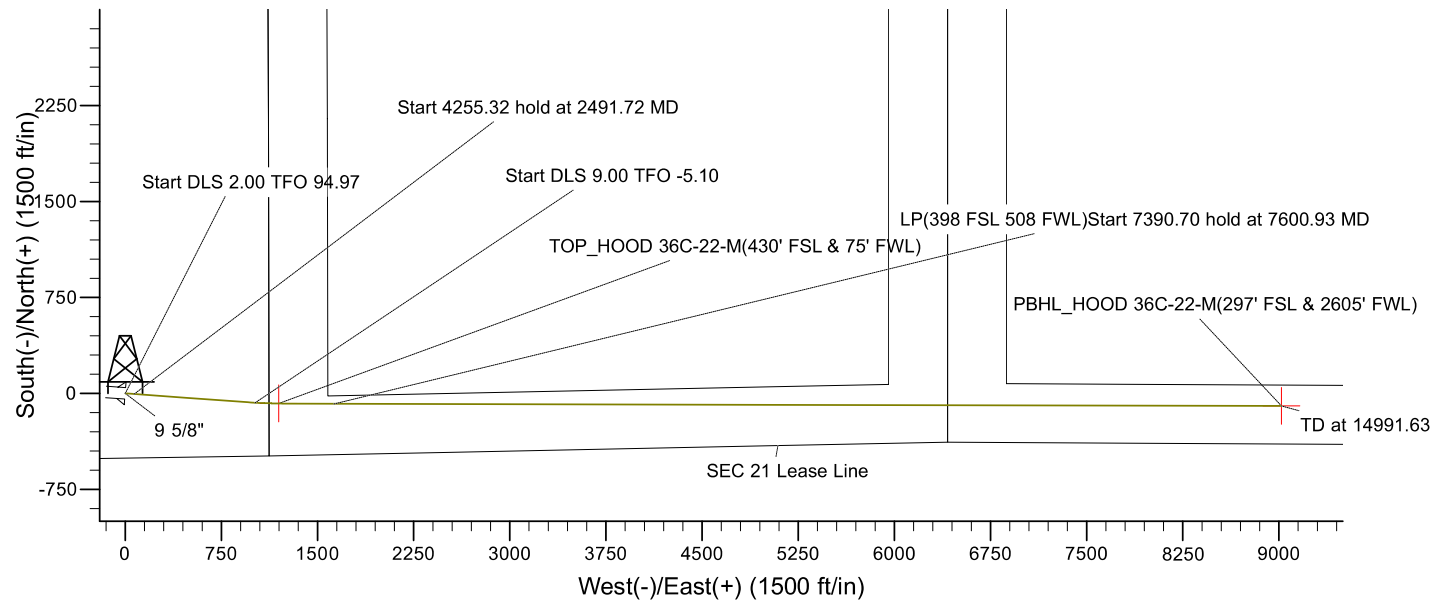
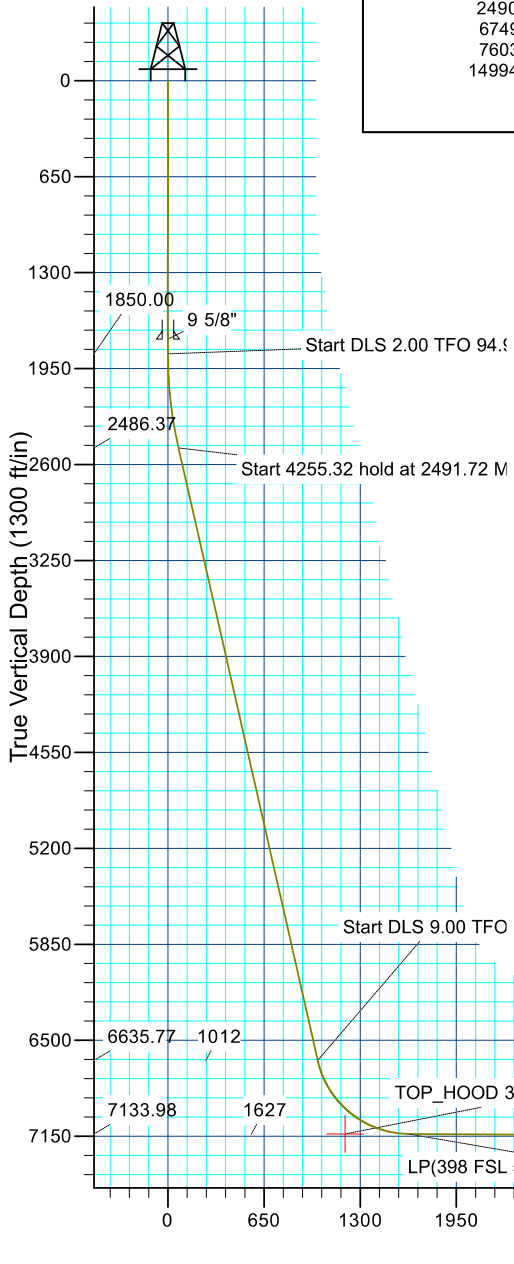
PBHL_HOOD 36C-22-M(297' FSL & 2605' FWL)

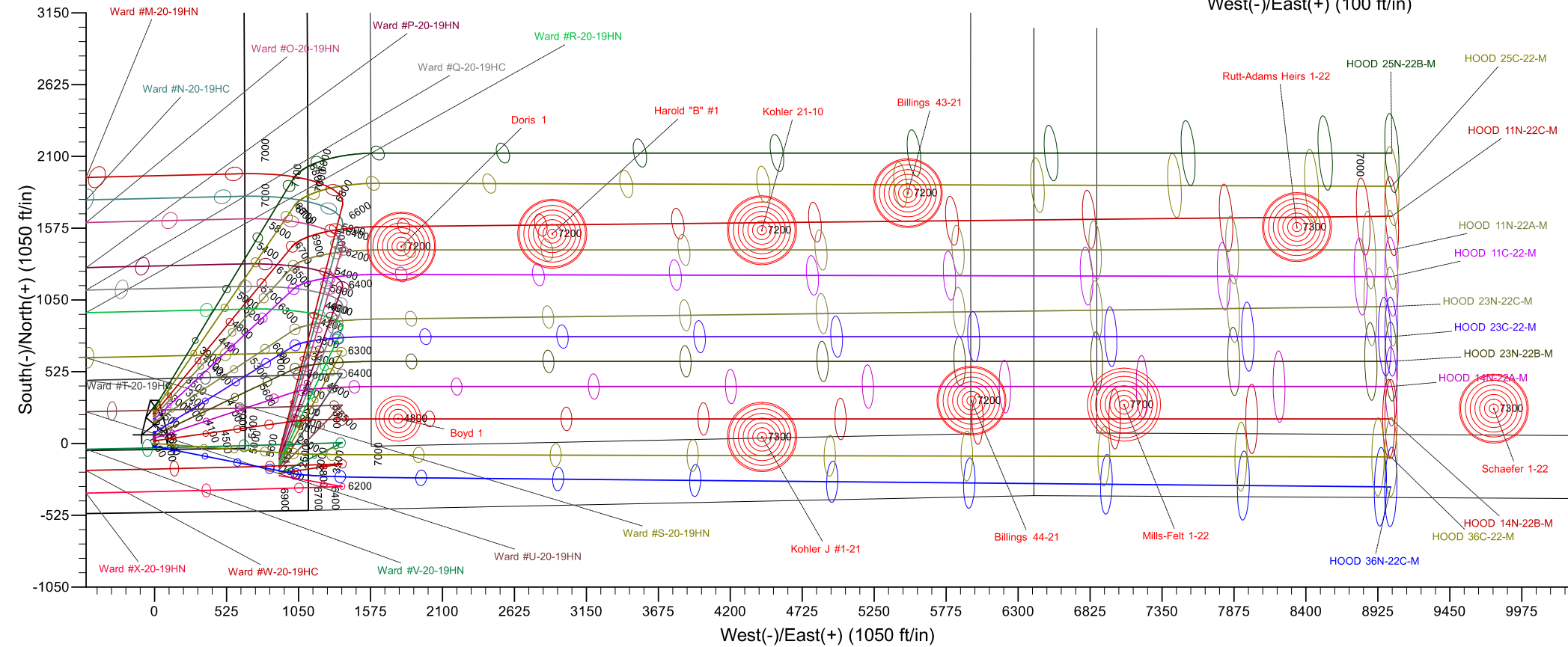
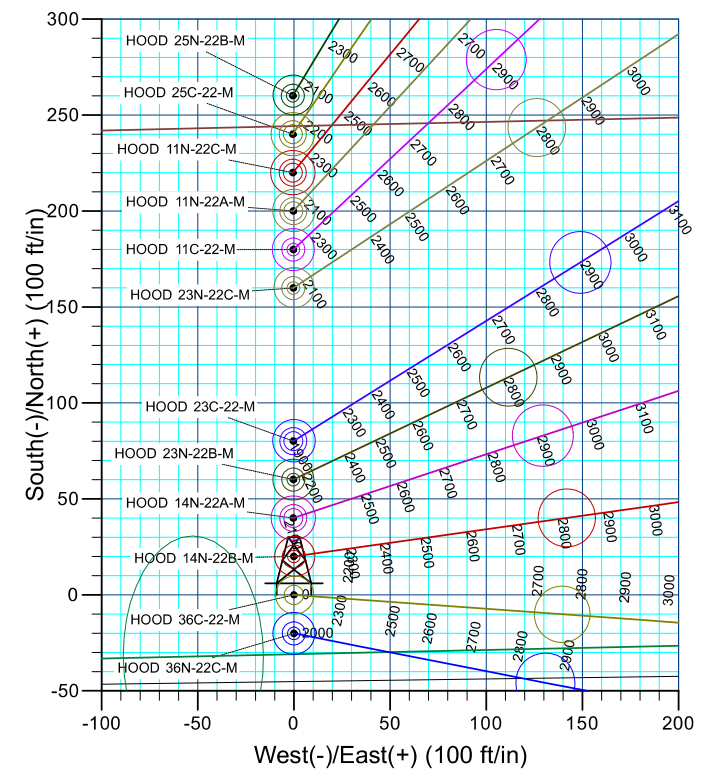
PROJECT DETAILS: SEC 20-T6N-R66W

Geodetic System: US State Plane 1983
 Datum: North American Datum 1983
 Ellipsoid: GRS 1980
 Zone: Colorado Northern Zone
 Colorado Northern Zone
 System Datum: Mean Sea Level

CASING DETAILS

TVD	MD	Name	Size
1750.00	1750.00	9 5/8"	9.625







Synergy Resources Corporation

SEC 20-T6N-R66W

HOOD-DOLES 37-20 PAD

HOOD 36C-22-M

OH

Plan: PLAN #2

Standard Survey Report

20 December, 2016

Company:	Synergy Resources Corporation	Local Co-ordinate Reference:	Well HOOD 36C-22-M
Project:	SEC 20-T6N-R66W	TVD Reference:	GL 4734 & 25' KB @ 4759.00ft (ASSUMED)
Site:	HOOD-DOLES 37-20 PAD	MD Reference:	GL 4734 & 25' KB @ 4759.00ft (ASSUMED)
Well:	HOOD 36C-22-M	North Reference:	True
Wellbore:	OH	Survey Calculation Method:	Minimum Curvature
Design:	PLAN #2	Database:	EDM 5000.14 Single User Db

Project	SEC 20-T6N-R66W		
Map System:	US State Plane 1983	System Datum:	Mean Sea Level
Geo Datum:	North American Datum 1983		
Map Zone:	Colorado Northern Zone		

Site		HOOD-DOLES 37-20 PAD			
Site Position:		Northing:	1,414,281.96 ft	Latitude:	40.4684660
From:	Lat/Long	Easting:	3,195,759.92 ft	Longitude:	-104.7964230
Position Uncertainty:	4.92 ft	Slot Radius:	13.200 in	Grid Convergence:	0.45 °

Well	HOOD 36C-22-M, 505' FSL & 1122' FEL					
Well Position	+N/-S	0.00 ft	Northing:	1,414,021.84 ft	Latitude:	40.4677520
	+E/-W	0.00 ft	Easting:	3,195,762.54 ft	Longitude:	-104.7964210
Position Uncertainty		3.28 ft	Wellhead Elevation:	ft	Ground Level:	4,734.00 ft

Wellbore	OH				
Magnetics	Model Name	Sample Date	Declination (°)	Dip Angle (°)	Field Strength (nT)
	IGRF2015	12/15/2016	8.29	66.92	52,482

Design	PLAN #2				
Audit Notes:					
Version:	Phase:	PLAN	Tie On Depth:	0.00	
Vertical Section:	Depth From (TVD) (ft)	+N/-S (ft)	+E/-W (ft)	Direction (°)	
	0.00	0.00	0.00	90.00	

Survey Tool Program	Date	12/20/2016			
From (ft)	To (ft)	Survey (Wellbore)	Tool Name	Description	
0.00	14,994.26	PLAN #2 (OH)	MWD+IFR1	OWSG MWD + IFR1	

Planned Survey										
Measured Depth (ft)	Inclination (°)	Azimuth (°)	Vertical Depth (ft)	+N/-S (ft)	+E/-W (ft)	Vertical Section (ft)	Dogleg Rate (°/100ft)	Build Rate (°/100ft)	Turn Rate (°/100ft)	
0.00	0.00	0.00	0.00	0.00	0.00	0.00	0.00	0.00	0.00	
1,750.00	0.00	0.00	1,750.00	0.00	0.00	0.00	0.00	0.00	0.00	
9 5/8"										
1,850.00	0.00	0.00	1,850.00	0.00	0.00	0.00	0.00	0.00	0.00	
Start DLS 2.00 TFO 94.97										
1,900.00	1.00	94.13	1,900.00	-0.03	0.44	0.44	2.00	2.00	0.00	
2,000.00	3.00	94.13	1,999.93	-0.28	3.92	3.92	2.00	2.00	0.00	
2,100.00	5.00	94.13	2,099.68	-0.78	10.87	10.87	2.00	2.00	0.00	
2,200.00	7.00	94.13	2,199.13	-1.54	21.30	21.30	2.00	2.00	0.00	
2,300.00	9.00	94.13	2,298.15	-2.54	35.18	35.18	2.00	2.00	0.00	

Company:	Synergy Resources Corporation	Local Co-ordinate Reference:	Well HOOD 36C-22-M
Project:	SEC 20-T6N-R66W	TVD Reference:	GL 4734 & 25' KB @ 4759.00ft (ASSUMED)
Site:	HOOD-DOLES 37-20 PAD	MD Reference:	GL 4734 & 25' KB @ 4759.00ft (ASSUMED)
Well:	HOOD 36C-22-M	North Reference:	True
Wellbore:	OH	Survey Calculation Method:	Minimum Curvature
Design:	PLAN #2	Database:	EDM 5000.14 Single User Db

Planned Survey

Measured Depth (ft)	Inclination (°)	Azimuth (°)	Vertical Depth (ft)	+N/-S (ft)	+E/-W (ft)	Vertical Section (ft)	Dogleg Rate (°/100ft)	Build Rate (°/100ft)	Turn Rate (°/100ft)
2,400.00	11.00	94.13	2,396.63	-3.79	52.50	52.50	2.00	2.00	0.00
2,490.51	12.81	94.13	2,485.18	-5.13	71.12	71.12	2.00	2.00	0.00
2,491.72	12.81	94.13	2,486.37	-5.15	71.39	71.39	0.00	0.00	0.00
Start 4255.32 hold at 2491.72 MD									
2,500.00	12.81	94.13	2,494.44	-5.28	73.22	73.22	0.00	0.00	0.00
2,600.00	12.81	94.13	2,591.95	-6.88	95.33	95.33	0.00	0.00	0.00
2,700.00	12.81	94.13	2,689.46	-8.47	117.45	117.45	0.00	0.00	0.00
2,800.00	12.81	94.13	2,786.97	-10.07	139.56	139.56	0.00	0.00	0.00
2,900.00	12.81	94.13	2,884.48	-11.66	161.68	161.68	0.00	0.00	0.00
3,000.00	12.81	94.13	2,982.00	-13.26	183.79	183.79	0.00	0.00	0.00
3,100.00	12.81	94.13	3,079.51	-14.85	205.91	205.91	0.00	0.00	0.00
3,200.00	12.81	94.13	3,177.02	-16.45	228.02	228.02	0.00	0.00	0.00
3,300.00	12.81	94.13	3,274.53	-18.05	250.14	250.14	0.00	0.00	0.00
3,400.00	12.81	94.13	3,372.04	-19.64	272.25	272.25	0.00	0.00	0.00
3,500.00	12.81	94.13	3,469.55	-21.24	294.37	294.37	0.00	0.00	0.00
3,600.00	12.81	94.13	3,567.06	-22.83	316.48	316.48	0.00	0.00	0.00
3,700.00	12.81	94.13	3,664.57	-24.43	338.59	338.59	0.00	0.00	0.00
3,800.00	12.81	94.13	3,762.08	-26.02	360.71	360.71	0.00	0.00	0.00
3,900.00	12.81	94.13	3,859.60	-27.62	382.82	382.82	0.00	0.00	0.00
4,000.00	12.81	94.13	3,957.11	-29.21	404.94	404.94	0.00	0.00	0.00
4,100.00	12.81	94.13	4,054.62	-30.81	427.05	427.05	0.00	0.00	0.00
4,200.00	12.81	94.13	4,152.13	-32.40	449.17	449.17	0.00	0.00	0.00
4,300.00	12.81	94.13	4,249.64	-34.00	471.28	471.28	0.00	0.00	0.00
4,400.00	12.81	94.13	4,347.15	-35.59	493.40	493.40	0.00	0.00	0.00
4,500.00	12.81	94.13	4,444.66	-37.19	515.51	515.51	0.00	0.00	0.00
4,600.00	12.81	94.13	4,542.17	-38.79	537.63	537.63	0.00	0.00	0.00
4,700.00	12.81	94.13	4,639.68	-40.38	559.74	559.74	0.00	0.00	0.00
4,800.00	12.81	94.13	4,737.19	-41.98	581.86	581.86	0.00	0.00	0.00
4,900.00	12.81	94.13	4,834.71	-43.57	603.97	603.97	0.00	0.00	0.00
5,000.00	12.81	94.13	4,932.22	-45.17	626.08	626.08	0.00	0.00	0.00
5,100.00	12.81	94.13	5,029.73	-46.76	648.20	648.20	0.00	0.00	0.00
5,200.00	12.81	94.13	5,127.24	-48.36	670.31	670.31	0.00	0.00	0.00
5,300.00	12.81	94.13	5,224.75	-49.95	692.43	692.43	0.00	0.00	0.00
5,400.00	12.81	94.13	5,322.26	-51.55	714.54	714.54	0.00	0.00	0.00
5,500.00	12.81	94.13	5,419.77	-53.14	736.66	736.66	0.00	0.00	0.00
5,600.00	12.81	94.13	5,517.28	-54.74	758.77	758.77	0.00	0.00	0.00
5,700.00	12.81	94.13	5,614.79	-56.33	780.89	780.89	0.00	0.00	0.00
5,800.00	12.81	94.13	5,712.30	-57.93	803.00	803.00	0.00	0.00	0.00
5,900.00	12.81	94.13	5,809.82	-59.53	825.12	825.12	0.00	0.00	0.00
6,000.00	12.81	94.13	5,907.33	-61.12	847.23	847.23	0.00	0.00	0.00
6,100.00	12.81	94.13	6,004.84	-62.72	869.35	869.35	0.00	0.00	0.00
6,200.00	12.81	94.13	6,102.35	-64.31	891.46	891.46	0.00	0.00	0.00
6,300.00	12.81	94.13	6,199.86	-65.91	913.57	913.57	0.00	0.00	0.00

Company:	Synergy Resources Corporation	Local Co-ordinate Reference:	Well HOOD 36C-22-M
Project:	SEC 20-T6N-R66W	TVD Reference:	GL 4734 & 25' KB @ 4759.00ft (ASSUMED)
Site:	HOOD-DOLES 37-20 PAD	MD Reference:	GL 4734 & 25' KB @ 4759.00ft (ASSUMED)
Well:	HOOD 36C-22-M	North Reference:	True
Wellbore:	OH	Survey Calculation Method:	Minimum Curvature
Design:	PLAN #2	Database:	EDM 5000.14 Single User Db

Planned Survey

Measured Depth (ft)	Inclination (°)	Azimuth (°)	Vertical Depth (ft)	+N/-S (ft)	+E/-W (ft)	Vertical Section (ft)	Dogleg Rate (°/100ft)	Build Rate (°/100ft)	Turn Rate (°/100ft)
6,400.00	12.81	94.13	6,297.37	-67.50	935.69	935.69	0.00	0.00	0.00
6,500.00	12.81	94.13	6,394.88	-69.10	957.80	957.80	0.00	0.00	0.00
6,600.00	12.81	94.13	6,492.39	-70.69	979.92	979.92	0.00	0.00	0.00
6,700.00	12.81	94.13	6,589.90	-72.29	1,002.03	1,002.03	0.00	0.00	0.00
6,747.04	12.81	94.13	6,635.77	-73.04	1,012.44	1,012.44	0.00	0.00	0.00
Start DLS 9.00 TFO -5.10									
6,749.59	12.81	94.13	6,638.26	-73.08	1,013.00	1,013.00	0.00	0.00	0.00
6,800.00	17.34	93.04	6,686.92	-73.88	1,026.08	1,026.08	9.00	8.98	-2.16
6,900.00	26.33	91.96	6,779.65	-75.43	1,063.20	1,063.20	9.00	8.99	-1.08
7,000.00	35.33	91.40	6,865.44	-76.90	1,114.37	1,114.37	9.00	9.00	-0.56
7,100.00	44.32	91.05	6,942.16	-78.25	1,178.34	1,178.34	9.00	9.00	-0.35
7,200.00	53.32	90.79	7,007.93	-79.44	1,253.51	1,253.51	9.00	9.00	-0.25
7,300.00	62.32	90.59	7,061.14	-80.46	1,338.06	1,338.06	9.00	9.00	-0.20
7,400.00	71.32	90.42	7,100.46	-81.27	1,429.89	1,429.89	9.00	9.00	-0.17
7,500.00	80.32	90.27	7,124.94	-81.85	1,526.74	1,526.74	9.00	9.00	-0.15
7,600.00	89.32	90.13	7,133.97	-82.20	1,626.23	1,626.23	9.00	9.00	-0.14
7,600.93	89.40	90.12	7,133.98	-82.20	1,627.16	1,627.16	9.00	9.00	-0.14
LP(382 FSL 508 FWL)Start 7390.70 hold at 7600.93 MD									
7,603.82	89.66	90.12	7,134.00	-82.21	1,630.05	1,630.05	9.00	9.00	-0.14
7,700.00	89.66	90.12	7,134.57	-82.41	1,726.22	1,726.22	0.00	0.00	0.00
7,800.00	89.66	90.12	7,135.17	-82.62	1,826.22	1,826.22	0.00	0.00	0.00
7,900.00	89.66	90.12	7,135.76	-82.83	1,926.22	1,926.22	0.00	0.00	0.00
8,000.00	89.66	90.12	7,136.36	-83.04	2,026.22	2,026.22	0.00	0.00	0.00
8,100.00	89.66	90.12	7,136.95	-83.25	2,126.22	2,126.22	0.00	0.00	0.00
8,200.00	89.66	90.12	7,137.55	-83.46	2,226.21	2,226.21	0.00	0.00	0.00
8,300.00	89.66	90.12	7,138.14	-83.67	2,326.21	2,326.21	0.00	0.00	0.00
8,400.00	89.66	90.12	7,138.74	-83.89	2,426.21	2,426.21	0.00	0.00	0.00
8,500.00	89.66	90.12	7,139.34	-84.10	2,526.21	2,526.21	0.00	0.00	0.00
8,600.00	89.66	90.12	7,139.93	-84.31	2,626.21	2,626.21	0.00	0.00	0.00
8,700.00	89.66	90.12	7,140.53	-84.52	2,726.20	2,726.20	0.00	0.00	0.00
8,800.00	89.66	90.12	7,141.12	-84.73	2,826.20	2,826.20	0.00	0.00	0.00
8,900.00	89.66	90.12	7,141.72	-84.94	2,926.20	2,926.20	0.00	0.00	0.00
9,000.00	89.66	90.12	7,142.31	-85.15	3,026.20	3,026.20	0.00	0.00	0.00
9,100.00	89.66	90.12	7,142.91	-85.36	3,126.20	3,126.20	0.00	0.00	0.00
9,200.00	89.66	90.12	7,143.50	-85.57	3,226.19	3,226.19	0.00	0.00	0.00
9,300.00	89.66	90.12	7,144.10	-85.78	3,326.19	3,326.19	0.00	0.00	0.00
9,400.00	89.66	90.12	7,144.69	-85.99	3,426.19	3,426.19	0.00	0.00	0.00
9,500.00	89.66	90.12	7,145.29	-86.21	3,526.19	3,526.19	0.00	0.00	0.00
9,600.00	89.66	90.12	7,145.88	-86.42	3,626.19	3,626.19	0.00	0.00	0.00
9,700.00	89.66	90.12	7,146.48	-86.63	3,726.18	3,726.18	0.00	0.00	0.00
9,800.00	89.66	90.12	7,147.08	-86.84	3,826.18	3,826.18	0.00	0.00	0.00
9,900.00	89.66	90.12	7,147.67	-87.05	3,926.18	3,926.18	0.00	0.00	0.00
10,000.00	89.66	90.12	7,148.27	-87.26	4,026.18	4,026.18	0.00	0.00	0.00
10,100.00	89.66	90.12	7,148.86	-87.47	4,126.18	4,126.18	0.00	0.00	0.00

Company:	Synergy Resources Corporation	Local Co-ordinate Reference:	Well HOOD 36C-22-M
Project:	SEC 20-T6N-R66W	TVD Reference:	GL 4734 & 25' KB @ 4759.00ft (ASSUMED)
Site:	HOOD-DOLES 37-20 PAD	MD Reference:	GL 4734 & 25' KB @ 4759.00ft (ASSUMED)
Well:	HOOD 36C-22-M	North Reference:	True
Wellbore:	OH	Survey Calculation Method:	Minimum Curvature
Design:	PLAN #2	Database:	EDM 5000.14 Single User Db

Planned Survey

Measured Depth (ft)	Inclination (°)	Azimuth (°)	Vertical Depth (ft)	+N/-S (ft)	+E/-W (ft)	Vertical Section (ft)	Dogleg Rate (°/100ft)	Build Rate (°/100ft)	Turn Rate (°/100ft)
10,200.00	89.66	90.12	7,149.46	-87.68	4,226.17	4,226.17	0.00	0.00	0.00
10,300.00	89.66	90.12	7,150.05	-87.89	4,326.17	4,326.17	0.00	0.00	0.00
10,400.00	89.66	90.12	7,150.65	-88.10	4,426.17	4,426.17	0.00	0.00	0.00
10,500.00	89.66	90.12	7,151.24	-88.31	4,526.17	4,526.17	0.00	0.00	0.00
10,600.00	89.66	90.12	7,151.84	-88.52	4,626.17	4,626.17	0.00	0.00	0.00
10,700.00	89.66	90.12	7,152.43	-88.74	4,726.16	4,726.16	0.00	0.00	0.00
10,800.00	89.66	90.12	7,153.03	-88.95	4,826.16	4,826.16	0.00	0.00	0.00
10,900.00	89.66	90.12	7,153.62	-89.16	4,926.16	4,926.16	0.00	0.00	0.00
11,000.00	89.66	90.12	7,154.22	-89.37	5,026.16	5,026.16	0.00	0.00	0.00
11,100.00	89.66	90.12	7,154.81	-89.58	5,126.16	5,126.16	0.00	0.00	0.00
11,200.00	89.66	90.12	7,155.41	-89.79	5,226.15	5,226.15	0.00	0.00	0.00
11,300.00	89.66	90.12	7,156.01	-90.00	5,326.15	5,326.15	0.00	0.00	0.00
11,400.00	89.66	90.12	7,156.60	-90.21	5,426.15	5,426.15	0.00	0.00	0.00
11,500.00	89.66	90.12	7,157.20	-90.42	5,526.15	5,526.15	0.00	0.00	0.00
11,600.00	89.66	90.12	7,157.79	-90.63	5,626.15	5,626.15	0.00	0.00	0.00
11,700.00	89.66	90.12	7,158.39	-90.84	5,726.14	5,726.14	0.00	0.00	0.00
11,800.00	89.66	90.12	7,158.98	-91.05	5,826.14	5,826.14	0.00	0.00	0.00
11,900.00	89.66	90.12	7,159.58	-91.27	5,926.14	5,926.14	0.00	0.00	0.00
12,000.00	89.66	90.12	7,160.17	-91.48	6,026.14	6,026.14	0.00	0.00	0.00
12,100.00	89.66	90.12	7,160.77	-91.69	6,126.14	6,126.14	0.00	0.00	0.00
12,200.00	89.66	90.12	7,161.36	-91.90	6,226.13	6,226.13	0.00	0.00	0.00
12,300.00	89.66	90.12	7,161.96	-92.11	6,326.13	6,326.13	0.00	0.00	0.00
12,400.00	89.66	90.12	7,162.55	-92.32	6,426.13	6,426.13	0.00	0.00	0.00
12,500.00	89.66	90.12	7,163.15	-92.53	6,526.13	6,526.13	0.00	0.00	0.00
12,600.00	89.66	90.12	7,163.75	-92.74	6,626.13	6,626.13	0.00	0.00	0.00
12,700.00	89.66	90.12	7,164.34	-92.95	6,726.12	6,726.12	0.00	0.00	0.00
12,800.00	89.66	90.12	7,164.94	-93.16	6,826.12	6,826.12	0.00	0.00	0.00
12,900.00	89.66	90.12	7,165.53	-93.37	6,926.12	6,926.12	0.00	0.00	0.00
13,000.00	89.66	90.12	7,166.13	-93.58	7,026.12	7,026.12	0.00	0.00	0.00
13,100.00	89.66	90.12	7,166.72	-93.80	7,126.12	7,126.12	0.00	0.00	0.00
13,200.00	89.66	90.12	7,167.32	-94.01	7,226.11	7,226.11	0.00	0.00	0.00
13,300.00	89.66	90.12	7,167.91	-94.22	7,326.11	7,326.11	0.00	0.00	0.00
13,400.00	89.66	90.12	7,168.51	-94.43	7,426.11	7,426.11	0.00	0.00	0.00
13,500.00	89.66	90.12	7,169.10	-94.64	7,526.11	7,526.11	0.00	0.00	0.00
13,600.00	89.66	90.12	7,169.70	-94.85	7,626.11	7,626.11	0.00	0.00	0.00
13,700.00	89.66	90.12	7,170.29	-95.06	7,726.10	7,726.10	0.00	0.00	0.00
13,800.00	89.66	90.12	7,170.89	-95.27	7,826.10	7,826.10	0.00	0.00	0.00
13,900.00	89.66	90.12	7,171.49	-95.48	7,926.10	7,926.10	0.00	0.00	0.00
14,000.00	89.66	90.12	7,172.08	-95.69	8,026.10	8,026.10	0.00	0.00	0.00
14,100.00	89.66	90.12	7,172.68	-95.90	8,126.10	8,126.10	0.00	0.00	0.00
14,200.00	89.66	90.12	7,173.27	-96.11	8,226.09	8,226.09	0.00	0.00	0.00
14,300.00	89.66	90.12	7,173.87	-96.33	8,326.09	8,326.09	0.00	0.00	0.00
14,400.00	89.66	90.12	7,174.46	-96.54	8,426.09	8,426.09	0.00	0.00	0.00

Company:	Synergy Resources Corporation	Local Co-ordinate Reference:	Well HOOD 36C-22-M
Project:	SEC 20-T6N-R66W	TVD Reference:	GL 4734 & 25' KB @ 4759.00ft (ASSUMED)
Site:	HOOD-DOLES 37-20 PAD	MD Reference:	GL 4734 & 25' KB @ 4759.00ft (ASSUMED)
Well:	HOOD 36C-22-M	North Reference:	True
Wellbore:	OH	Survey Calculation Method:	Minimum Curvature
Design:	PLAN #2	Database:	EDM 5000.14 Single User Db

Planned Survey										
Measured Depth (ft)	Inclination (°)	Azimuth (°)	Vertical Depth (ft)	+N/-S (ft)	+E/-W (ft)	Vertical Section (ft)	Dogleg Rate (°/100ft)	Build Rate (°/100ft)	Turn Rate (°/100ft)	
14,500.00	89.66	90.12	7,175.06	-96.75	8,526.09	8,526.09	0.00	0.00	0.00	
14,600.00	89.66	90.12	7,175.65	-96.96	8,626.09	8,626.09	0.00	0.00	0.00	
14,700.00	89.66	90.12	7,176.25	-97.17	8,726.08	8,726.08	0.00	0.00	0.00	
14,800.00	89.66	90.12	7,176.84	-97.38	8,826.08	8,826.08	0.00	0.00	0.00	
14,900.00	89.66	90.12	7,177.44	-97.59	8,926.08	8,926.08	0.00	0.00	0.00	
14,991.38	89.66	90.12	7,177.98	-97.78	9,017.46	9,017.46	0.00	0.00	0.00	
TD at 14991.63										
14,994.26	89.66	90.12	7,178.00	-97.79	9,020.34	9,020.34	0.00	0.00	0.00	

Design Targets										
Target Name	Dip Angle (°)	Dip Dir. (°)	TVD (ft)	+N/-S (ft)	+E/-W (ft)	Northing (ft)	Easting (ft)	Latitude	Longitude	
- hit/miss target										
- Shape										
TOP_HOOD 36C-22-M(0.00	0.00	7,134.00	-78.23	1,196.69	1,413,953.11	3,196,959.81	40.4675372	-104.7921200	
- plan misses target center by 135.76ft at 7219.05ft MD (7019.08 TVD, -79.65 N, 1268.96 E)										
- Point										
PBHL_HOOD 36C-22-M	0.00	0.00	7,178.00	-97.79	9,020.34	1,413,995.62	3,204,783.37	40.4674790	-104.7640010	
- plan hits target center										
- Point										

Casing Points					
Measured Depth (ft)	Vertical Depth (ft)	Name	Casing Diameter (in)	Hole Diameter (in)	
1,750.00	1,750.00	9 5/8"	9.625	13.500	

Plan Annotations					
Measured Depth (ft)	Vertical Depth (ft)	Local Coordinates		Comment	
		+N/-S (ft)	+E/-W (ft)		
1850	1850	0	0	Start DLS 2.00 TFO 94.97	
2492	2486	-5	71	Start 4255.32 hold at 2491.72 MD	
6747	6636	-73	1012	Start DLS 9.00 TFO -5.10	
7601	7134	-82	1627	LP(382 FSL 508 FWL)Start 7390.70 hold at 7600.93 MD	
14,991	7178	-98	9017	TD at 14991.63	

Checked By: _____	Approved By: _____	Date: _____
-------------------	--------------------	-------------