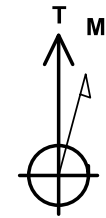




Project: SEC 20-T6N-R66W
Site: HOOD-DOLES 37-20 PAD
Well: HOOD 36N-22C-M
Wellbore: OH
Design: PLAN #2



Azimuths to True North
 Magnetic North: 8.29°

Magnetic Field
 Strength: 52482.3snT
 Dip Angle: 66.92°
 Date: 12/15/2016
 Model: IGRF2015

SECTION DETAILS

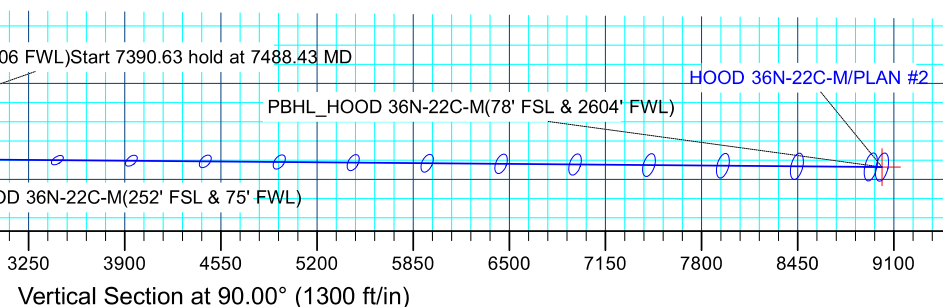
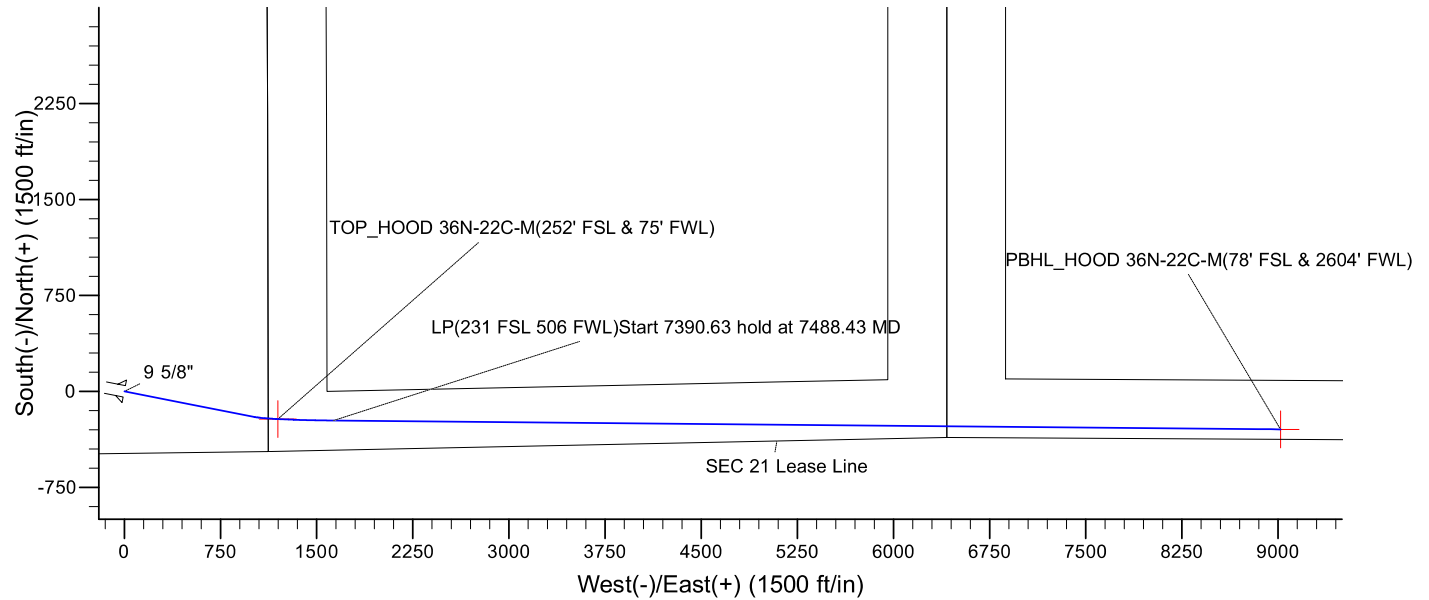
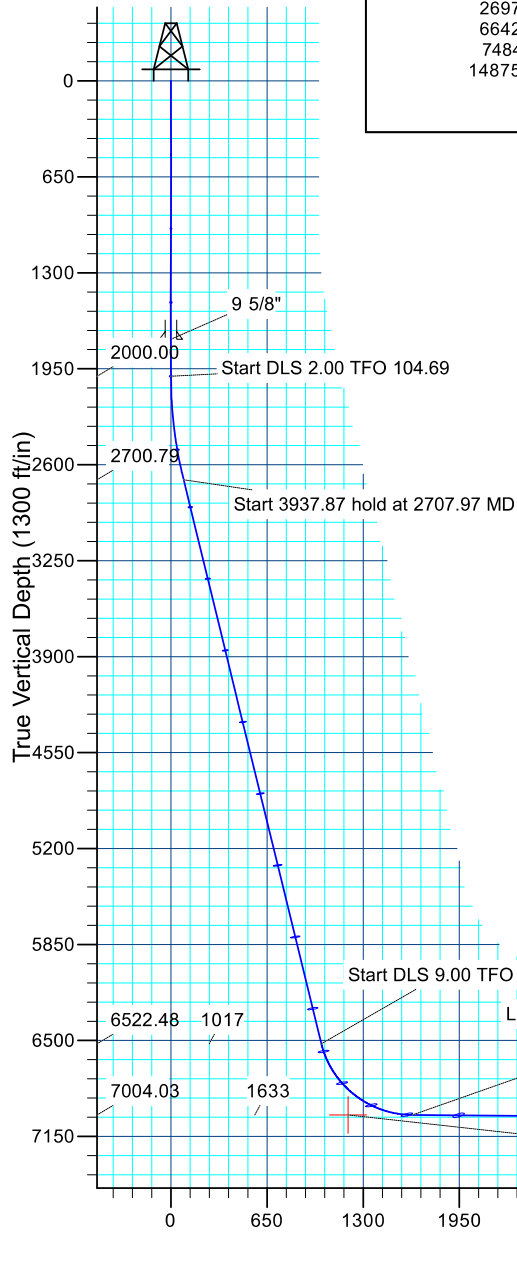
MD	Inc	Azi	TVD	+N/-S	+E/-W	Dleg	TFace	V/Sect	Target
0.00	0.00	0.00	0.00	0.00	0.00	0.00	0.00	0.00	
2000.00	0.00	0.00	2000.00	0.00	0.00	0.00	0.00	0.00	
2697.61	13.95	101.15	2690.73	-16.35	82.92	2.00	101.15	82.92	
6642.01	13.95	101.15	6518.77	-200.32	1016.00	0.00	0.00	1016.00	
7484.36	89.52	90.53	7004.00	-228.07	1628.92	9.00	-10.96	1628.92	
14875.61	89.52	90.53	7066.00	-297.07	9019.58	0.00	0.00	9019.58	PBHL

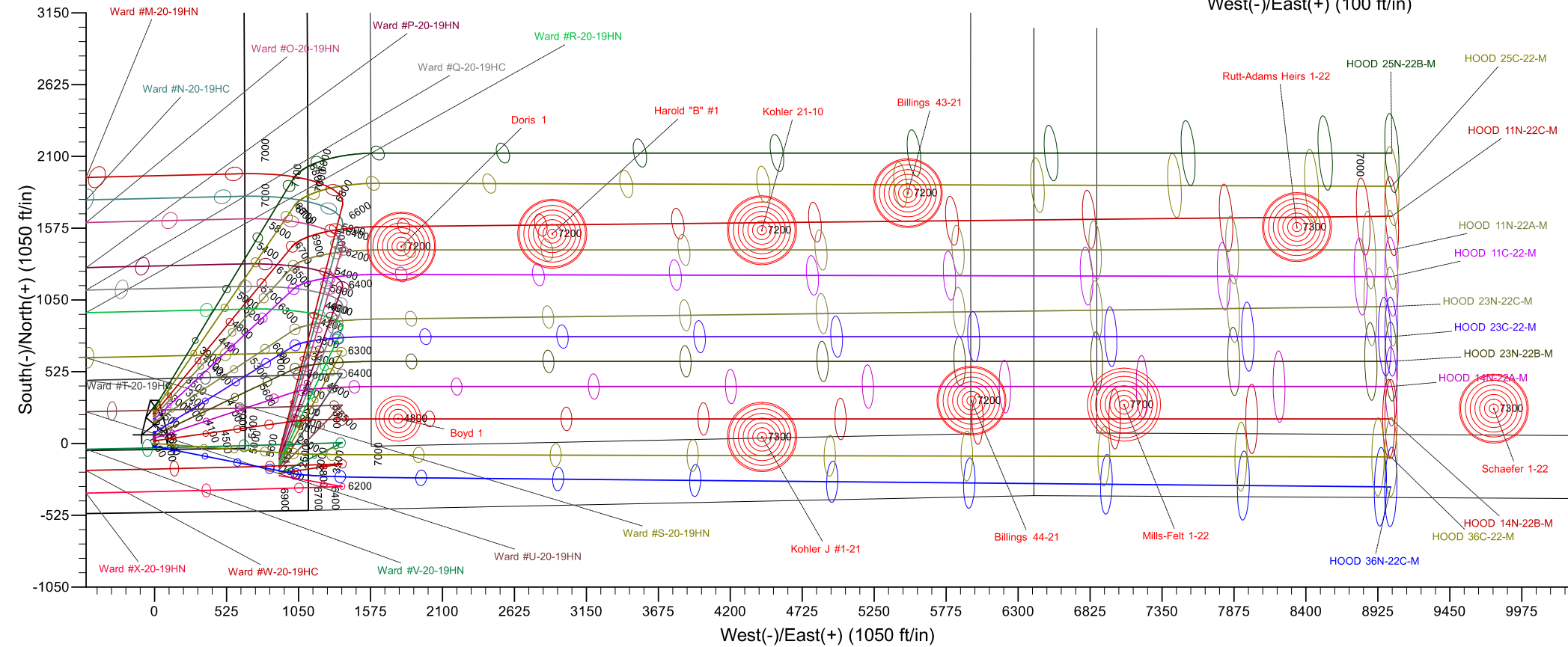
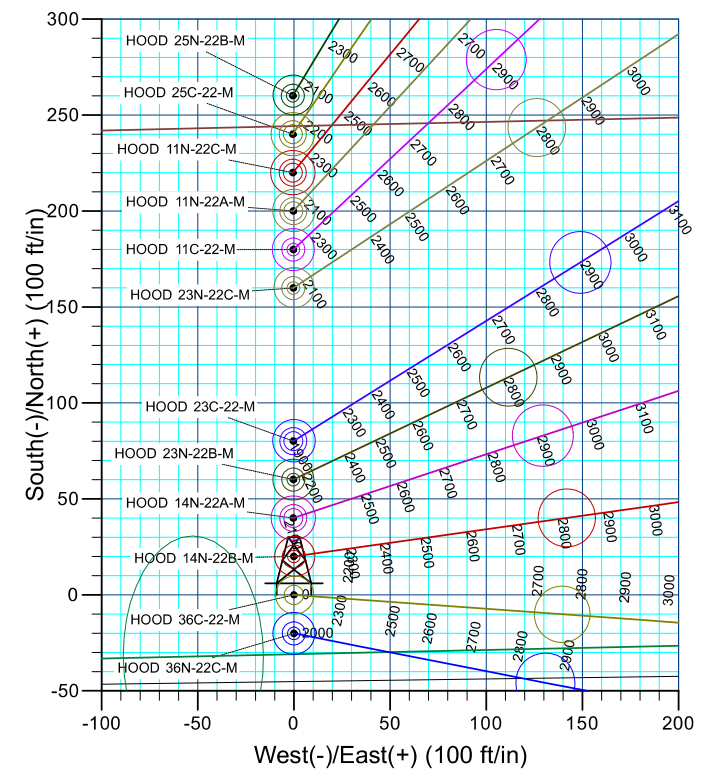
PROJECT DETAILS: SEC 20-T6N-R66W

Geodetic System: US State Plane 1983
 Datum: North American Datum 1983
 Ellipsoid: GRS 1980
 Zone: Colorado Northern Zone
 Colorado Northern Zone
 System Datum: Mean Sea Level

CASING DETAILS

TVD	MD	Name	Size
1750.00	1750.00	9 5/8"	9.625







Synergy Resources Corporation

SEC 20-T6N-R66W

HOOD-DOLES 37-20 PAD

HOOD 36N-22C-M

OH

Plan: PLAN #2

Standard Survey Report

20 December, 2016

Company:	Synergy Resources Corporation	Local Co-ordinate Reference:	Well HOOD 36N-22C-M
Project:	SEC 20-T6N-R66W	TVD Reference:	GL 4734 & 25' KB @ 4759.00ft (ASSUMED)
Site:	HOOD-DOLES 37-20 PAD	MD Reference:	GL 4734 & 25' KB @ 4759.00ft (ASSUMED)
Well:	HOOD 36N-22C-M	North Reference:	True
Wellbore:	OH	Survey Calculation Method:	Minimum Curvature
Design:	PLAN #2	Database:	EDM 5000.14 Single User Db

Project	SEC 20-T6N-R66W		
Map System:	US State Plane 1983	System Datum:	Mean Sea Level
Geo Datum:	North American Datum 1983		
Map Zone:	Colorado Northern Zone		

Site	HOOD-DOLES 37-20 PAD				
Site Position:		Northing:	1,414,281.96 ft	Latitude:	40.4684660
From:	Lat/Long	Easting:	3,195,759.92 ft	Longitude:	-104.7964230
Position Uncertainty:	4.92 ft	Slot Radius:	13.200 in	Grid Convergence:	0.45 °

Well	HOOD 36N-22C-M, 485' FSL & 1122' FEL					
Well Position	+N/-S	0.00 ft	Northing:	1,414,001.81 ft	Latitude:	40.4676970
	+E/-W	0.00 ft	Easting:	3,195,762.70 ft	Longitude:	-104.7964210
Position Uncertainty		3.28 ft	Wellhead Elevation:	ft	Ground Level:	4,734.00 ft

Wellbore	OH				
Magnetics	Model Name	Sample Date	Declination (°)	Dip Angle (°)	Field Strength (nT)
	IGRF2015	12/15/2016	8.29	66.92	52,482

Design	PLAN #2				
Audit Notes:					
Version:	Phase:	PLAN	Tie On Depth:	0.00	
Vertical Section:	Depth From (TVD) (ft)	+N/-S (ft)	+E/-W (ft)	Direction (°)	
	0.00	0.00	0.00	90.00	

Survey Tool Program	Date	12/20/2016			
From (ft)	To (ft)	Survey (Wellbore)	Tool Name	Description	
0.00	14,875.56	PLAN #2 (OH)	MWD+IFR1	OWSG MWD + IFR1	

Planned Survey										
Measured Depth (ft)	Inclination (°)	Azimuth (°)	Vertical Depth (ft)	+N/-S (ft)	+E/-W (ft)	Vertical Section (ft)	Dogleg Rate (°/100ft)	Build Rate (°/100ft)	Turn Rate (°/100ft)	
0.00	0.00	0.00	0.00	0.00	0.00	0.00	0.00	0.00	0.00	
1,750.00	0.00	0.00	1,750.00	0.00	0.00	0.00	0.00	0.00	0.00	
9 5/8"										
2,000.00	0.00	0.00	2,000.00	0.00	0.00	0.00	0.00	0.00	0.00	
Start DLS 2.00 TFO 104.69										
2,100.00	2.00	101.15	2,099.98	-0.34	1.71	1.71	2.00	2.00	0.00	
2,200.00	4.00	101.15	2,199.84	-1.35	6.85	6.85	2.00	2.00	0.00	
2,300.00	6.00	101.15	2,299.45	-3.04	15.40	15.40	2.00	2.00	0.00	
2,400.00	8.00	101.15	2,398.70	-5.39	27.35	27.35	2.00	2.00	0.00	
2,500.00	10.00	101.15	2,497.47	-8.42	42.70	42.70	2.00	2.00	0.00	

Company:	Synergy Resources Corporation	Local Co-ordinate Reference:	Well HOOD 36N-22C-M
Project:	SEC 20-T6N-R66W	TVD Reference:	GL 4734 & 25' KB @ 4759.00ft (ASSUMED)
Site:	HOOD-DOLES 37-20 PAD	MD Reference:	GL 4734 & 25' KB @ 4759.00ft (ASSUMED)
Well:	HOOD 36N-22C-M	North Reference:	True
Wellbore:	OH	Survey Calculation Method:	Minimum Curvature
Design:	PLAN #2	Database:	EDM 5000.14 Single User Db

Planned Survey

Measured Depth (ft)	Inclination (°)	Azimuth (°)	Vertical Depth (ft)	+N/-S (ft)	+E/-W (ft)	Vertical Section (ft)	Dogleg Rate (°/100ft)	Build Rate (°/100ft)	Turn Rate (°/100ft)
2,600.00	12.00	101.15	2,595.62	-12.11	61.42	61.42	2.00	2.00	0.00
2,697.61	13.95	101.15	2,690.73	-16.35	82.92	82.92	2.00	2.00	0.00
2,700.00	13.95	101.15	2,693.06	-16.46	83.49	83.49	0.00	0.00	0.00
2,707.97	13.95	101.15	2,700.79	-16.83	85.37	85.37	0.00	0.00	0.00
Start 3937.87 hold at 2707.97 MD									
2,800.00	13.95	101.15	2,790.11	-21.13	107.14	107.14	0.00	0.00	0.00
2,900.00	13.95	101.15	2,887.15	-25.79	130.80	130.80	0.00	0.00	0.00
3,000.00	13.95	101.15	2,984.20	-30.45	154.46	154.46	0.00	0.00	0.00
3,100.00	13.95	101.15	3,081.25	-35.12	178.11	178.11	0.00	0.00	0.00
3,200.00	13.95	101.15	3,178.30	-39.78	201.77	201.77	0.00	0.00	0.00
3,300.00	13.95	101.15	3,275.35	-44.45	225.42	225.42	0.00	0.00	0.00
3,400.00	13.95	101.15	3,372.40	-49.11	249.08	249.08	0.00	0.00	0.00
3,500.00	13.95	101.15	3,469.45	-53.77	272.73	272.73	0.00	0.00	0.00
3,600.00	13.95	101.15	3,566.50	-58.44	296.39	296.39	0.00	0.00	0.00
3,700.00	13.95	101.15	3,663.55	-63.10	320.05	320.05	0.00	0.00	0.00
3,800.00	13.95	101.15	3,760.60	-67.77	343.70	343.70	0.00	0.00	0.00
3,900.00	13.95	101.15	3,857.65	-72.43	367.36	367.36	0.00	0.00	0.00
4,000.00	13.95	101.15	3,954.70	-77.09	391.01	391.01	0.00	0.00	0.00
4,100.00	13.95	101.15	4,051.75	-81.76	414.67	414.67	0.00	0.00	0.00
4,200.00	13.95	101.15	4,148.80	-86.42	438.32	438.32	0.00	0.00	0.00
4,300.00	13.95	101.15	4,245.85	-91.09	461.98	461.98	0.00	0.00	0.00
4,400.00	13.95	101.15	4,342.90	-95.75	485.64	485.64	0.00	0.00	0.00
4,500.00	13.95	101.15	4,439.95	-100.41	509.29	509.29	0.00	0.00	0.00
4,600.00	13.95	101.15	4,537.00	-105.08	532.95	532.95	0.00	0.00	0.00
4,700.00	13.95	101.15	4,634.05	-109.74	556.60	556.60	0.00	0.00	0.00
4,800.00	13.95	101.15	4,731.10	-114.41	580.26	580.26	0.00	0.00	0.00
4,900.00	13.95	101.15	4,828.15	-119.07	603.91	603.91	0.00	0.00	0.00
5,000.00	13.95	101.15	4,925.20	-123.74	627.57	627.57	0.00	0.00	0.00
5,100.00	13.95	101.15	5,022.25	-128.40	651.23	651.23	0.00	0.00	0.00
5,200.00	13.95	101.15	5,119.30	-133.06	674.88	674.88	0.00	0.00	0.00
5,300.00	13.95	101.15	5,216.35	-137.73	698.54	698.54	0.00	0.00	0.00
5,400.00	13.95	101.15	5,313.40	-142.39	722.19	722.19	0.00	0.00	0.00
5,500.00	13.95	101.15	5,410.45	-147.06	745.85	745.85	0.00	0.00	0.00
5,600.00	13.95	101.15	5,507.50	-151.72	769.50	769.50	0.00	0.00	0.00
5,700.00	13.95	101.15	5,604.55	-156.38	793.16	793.16	0.00	0.00	0.00
5,800.00	13.95	101.15	5,701.60	-161.05	816.82	816.82	0.00	0.00	0.00
5,900.00	13.95	101.15	5,798.65	-165.71	840.47	840.47	0.00	0.00	0.00
6,000.00	13.95	101.15	5,895.70	-170.38	864.13	864.13	0.00	0.00	0.00
6,100.00	13.95	101.15	5,992.75	-175.04	887.78	887.78	0.00	0.00	0.00
6,200.00	13.95	101.15	6,089.80	-179.70	911.44	911.44	0.00	0.00	0.00
6,300.00	13.95	101.15	6,186.85	-184.37	935.09	935.09	0.00	0.00	0.00
6,400.00	13.95	101.15	6,283.90	-189.03	958.75	958.75	0.00	0.00	0.00
6,500.00	13.95	101.15	6,380.95	-193.70	982.41	982.41	0.00	0.00	0.00

Company:	Synergy Resources Corporation	Local Co-ordinate Reference:	Well HOOD 36N-22C-M
Project:	SEC 20-T6N-R66W	TVD Reference:	GL 4734 & 25' KB @ 4759.00ft (ASSUMED)
Site:	HOOD-DOLES 37-20 PAD	MD Reference:	GL 4734 & 25' KB @ 4759.00ft (ASSUMED)
Well:	HOOD 36N-22C-M	North Reference:	True
Wellbore:	OH	Survey Calculation Method:	Minimum Curvature
Design:	PLAN #2	Database:	EDM 5000.14 Single User Db

Planned Survey

Measured Depth (ft)	Inclination (°)	Azimuth (°)	Vertical Depth (ft)	+N/-S (ft)	+E/-W (ft)	Vertical Section (ft)	Dogleg Rate (°/100ft)	Build Rate (°/100ft)	Turn Rate (°/100ft)
6,600.00	13.95	101.15	6,478.00	-198.36	1,006.06	1,006.06	0.00	0.00	0.00
6,642.01	13.95	101.15	6,518.77	-200.32	1,016.00	1,016.00	0.00	0.00	0.00
6,645.84	14.29	100.89	6,522.48	-200.50	1,016.92	1,016.92	9.00	8.84	-6.93
Start DLS 9.00 TFO -15.16									
6,700.00	19.10	98.13	6,574.34	-203.02	1,032.26	1,032.26	9.00	8.88	-5.10
6,800.00	28.04	95.45	6,665.91	-207.57	1,071.94	1,071.94	9.00	8.94	-2.67
6,900.00	37.01	94.00	6,750.14	-211.91	1,125.47	1,125.47	9.00	8.97	-1.45
7,000.00	45.98	93.05	6,824.97	-215.94	1,191.53	1,191.53	9.00	8.98	-0.95
7,100.00	54.97	92.36	6,888.54	-219.54	1,268.50	1,268.50	9.00	8.98	-0.70
7,200.00	63.96	91.80	6,939.30	-222.64	1,354.49	1,354.49	9.00	8.99	-0.56
7,300.00	72.94	91.32	6,975.99	-225.16	1,447.37	1,447.37	9.00	8.99	-0.48
7,400.00	81.93	90.89	6,997.72	-227.03	1,544.86	1,544.86	9.00	8.99	-0.43
7,484.36	89.52	90.53	7,004.00	-228.07	1,628.92	1,628.92	9.00	8.99	-0.42
7,488.43	89.52	90.53	7,004.03	-228.11	1,632.98	1,632.98	0.00	0.00	0.00
LP(162 FSL 506 FWL)Start 7390.63 hold at 7488.43 MD									
7,500.00	89.52	90.53	7,004.13	-228.21	1,644.55	1,644.55	0.00	0.00	0.00
7,600.00	89.52	90.53	7,004.97	-229.15	1,744.55	1,744.55	0.00	0.00	0.00
7,700.00	89.52	90.53	7,005.81	-230.08	1,844.54	1,844.54	0.00	0.00	0.00
7,800.00	89.52	90.53	7,006.65	-231.01	1,944.53	1,944.53	0.00	0.00	0.00
7,900.00	89.52	90.53	7,007.49	-231.95	2,044.52	2,044.52	0.00	0.00	0.00
8,000.00	89.52	90.53	7,008.33	-232.88	2,144.51	2,144.51	0.00	0.00	0.00
8,100.00	89.52	90.53	7,009.16	-233.82	2,244.51	2,244.51	0.00	0.00	0.00
8,200.00	89.52	90.53	7,010.00	-234.75	2,344.50	2,344.50	0.00	0.00	0.00
8,300.00	89.52	90.53	7,010.84	-235.68	2,444.49	2,444.49	0.00	0.00	0.00
8,400.00	89.52	90.53	7,011.68	-236.62	2,544.48	2,544.48	0.00	0.00	0.00
8,500.00	89.52	90.53	7,012.52	-237.55	2,644.48	2,644.48	0.00	0.00	0.00
8,600.00	89.52	90.53	7,013.36	-238.48	2,744.47	2,744.47	0.00	0.00	0.00
8,700.00	89.52	90.53	7,014.20	-239.42	2,844.46	2,844.46	0.00	0.00	0.00
8,800.00	89.52	90.53	7,015.04	-240.35	2,944.45	2,944.45	0.00	0.00	0.00
8,900.00	89.52	90.53	7,015.88	-241.28	3,044.44	3,044.44	0.00	0.00	0.00
9,000.00	89.52	90.53	7,016.71	-242.22	3,144.44	3,144.44	0.00	0.00	0.00
9,100.00	89.52	90.53	7,017.55	-243.15	3,244.43	3,244.43	0.00	0.00	0.00
9,200.00	89.52	90.53	7,018.39	-244.08	3,344.42	3,344.42	0.00	0.00	0.00
9,300.00	89.52	90.53	7,019.23	-245.02	3,444.41	3,444.41	0.00	0.00	0.00
9,400.00	89.52	90.53	7,020.07	-245.95	3,544.40	3,544.40	0.00	0.00	0.00
9,500.00	89.52	90.53	7,020.91	-246.89	3,644.40	3,644.40	0.00	0.00	0.00
9,600.00	89.52	90.53	7,021.75	-247.82	3,744.39	3,744.39	0.00	0.00	0.00
9,700.00	89.52	90.53	7,022.59	-248.75	3,844.38	3,844.38	0.00	0.00	0.00
9,800.00	89.52	90.53	7,023.42	-249.69	3,944.37	3,944.37	0.00	0.00	0.00
9,900.00	89.52	90.53	7,024.26	-250.62	4,044.37	4,044.37	0.00	0.00	0.00
10,000.00	89.52	90.53	7,025.10	-251.55	4,144.36	4,144.36	0.00	0.00	0.00
10,100.00	89.52	90.53	7,025.94	-252.49	4,244.35	4,244.35	0.00	0.00	0.00
10,200.00	89.52	90.53	7,026.78	-253.42	4,344.34	4,344.34	0.00	0.00	0.00
10,300.00	89.52	90.53	7,027.62	-254.35	4,444.33	4,444.33	0.00	0.00	0.00

Company:	Synergy Resources Corporation	Local Co-ordinate Reference:	Well HOOD 36N-22C-M
Project:	SEC 20-T6N-R66W	TVD Reference:	GL 4734 & 25' KB @ 4759.00ft (ASSUMED)
Site:	HOOD-DOLES 37-20 PAD	MD Reference:	GL 4734 & 25' KB @ 4759.00ft (ASSUMED)
Well:	HOOD 36N-22C-M	North Reference:	True
Wellbore:	OH	Survey Calculation Method:	Minimum Curvature
Design:	PLAN #2	Database:	EDM 5000.14 Single User Db

Planned Survey

Measured Depth (ft)	Inclination (°)	Azimuth (°)	Vertical Depth (ft)	+N/-S (ft)	+E/-W (ft)	Vertical Section (ft)	Dogleg Rate (°/100ft)	Build Rate (°/100ft)	Turn Rate (°/100ft)
10,400.00	89.52	90.53	7,028.46	-255.29	4,544.33	4,544.33	0.00	0.00	0.00
10,500.00	89.52	90.53	7,029.30	-256.22	4,644.32	4,644.32	0.00	0.00	0.00
10,600.00	89.52	90.53	7,030.14	-257.15	4,744.31	4,744.31	0.00	0.00	0.00
10,700.00	89.52	90.53	7,030.97	-258.09	4,844.30	4,844.30	0.00	0.00	0.00
10,800.00	89.52	90.53	7,031.81	-259.02	4,944.29	4,944.29	0.00	0.00	0.00
10,900.00	89.52	90.53	7,032.65	-259.96	5,044.29	5,044.29	0.00	0.00	0.00
11,000.00	89.52	90.53	7,033.49	-260.89	5,144.28	5,144.28	0.00	0.00	0.00
11,100.00	89.52	90.53	7,034.33	-261.82	5,244.27	5,244.27	0.00	0.00	0.00
11,200.00	89.52	90.53	7,035.17	-262.76	5,344.26	5,344.26	0.00	0.00	0.00
11,300.00	89.52	90.53	7,036.01	-263.69	5,444.25	5,444.25	0.00	0.00	0.00
11,400.00	89.52	90.53	7,036.85	-264.62	5,544.25	5,544.25	0.00	0.00	0.00
11,500.00	89.52	90.53	7,037.68	-265.56	5,644.24	5,644.24	0.00	0.00	0.00
11,600.00	89.52	90.53	7,038.52	-266.49	5,744.23	5,744.23	0.00	0.00	0.00
11,700.00	89.52	90.53	7,039.36	-267.42	5,844.22	5,844.22	0.00	0.00	0.00
11,800.00	89.52	90.53	7,040.20	-268.36	5,944.22	5,944.22	0.00	0.00	0.00
11,900.00	89.52	90.53	7,041.04	-269.29	6,044.21	6,044.21	0.00	0.00	0.00
12,000.00	89.52	90.53	7,041.88	-270.23	6,144.20	6,144.20	0.00	0.00	0.00
12,100.00	89.52	90.53	7,042.72	-271.16	6,244.19	6,244.19	0.00	0.00	0.00
12,200.00	89.52	90.53	7,043.56	-272.09	6,344.18	6,344.18	0.00	0.00	0.00
12,300.00	89.52	90.53	7,044.40	-273.03	6,444.18	6,444.18	0.00	0.00	0.00
12,400.00	89.52	90.53	7,045.23	-273.96	6,544.17	6,544.17	0.00	0.00	0.00
12,500.00	89.52	90.53	7,046.07	-274.89	6,644.16	6,644.16	0.00	0.00	0.00
12,600.00	89.52	90.53	7,046.91	-275.83	6,744.15	6,744.15	0.00	0.00	0.00
12,700.00	89.52	90.53	7,047.75	-276.76	6,844.14	6,844.14	0.00	0.00	0.00
12,800.00	89.52	90.53	7,048.59	-277.69	6,944.14	6,944.14	0.00	0.00	0.00
12,900.00	89.52	90.53	7,049.43	-278.63	7,044.13	7,044.13	0.00	0.00	0.00
13,000.00	89.52	90.53	7,050.27	-279.56	7,144.12	7,144.12	0.00	0.00	0.00
13,100.00	89.52	90.53	7,051.11	-280.49	7,244.11	7,244.11	0.00	0.00	0.00
13,200.00	89.52	90.53	7,051.94	-281.43	7,344.11	7,344.11	0.00	0.00	0.00
13,300.00	89.52	90.53	7,052.78	-282.36	7,444.10	7,444.10	0.00	0.00	0.00
13,400.00	89.52	90.53	7,053.62	-283.30	7,544.09	7,544.09	0.00	0.00	0.00
13,500.00	89.52	90.53	7,054.46	-284.23	7,644.08	7,644.08	0.00	0.00	0.00
13,600.00	89.52	90.53	7,055.30	-285.16	7,744.07	7,744.07	0.00	0.00	0.00
13,700.00	89.52	90.53	7,056.14	-286.10	7,844.07	7,844.07	0.00	0.00	0.00
13,800.00	89.52	90.53	7,056.98	-287.03	7,944.06	7,944.06	0.00	0.00	0.00
13,900.00	89.52	90.53	7,057.82	-287.96	8,044.05	8,044.05	0.00	0.00	0.00
14,000.00	89.52	90.53	7,058.66	-288.90	8,144.04	8,144.04	0.00	0.00	0.00
14,100.00	89.52	90.53	7,059.49	-289.83	8,244.03	8,244.03	0.00	0.00	0.00
14,200.00	89.52	90.53	7,060.33	-290.76	8,344.03	8,344.03	0.00	0.00	0.00
14,300.00	89.52	90.53	7,061.17	-291.70	8,444.02	8,444.02	0.00	0.00	0.00
14,400.00	89.52	90.53	7,062.01	-292.63	8,544.01	8,544.01	0.00	0.00	0.00
14,500.00	89.52	90.53	7,062.85	-293.57	8,644.00	8,644.00	0.00	0.00	0.00
14,600.00	89.52	90.53	7,063.69	-294.50	8,744.00	8,744.00	0.00	0.00	0.00

Company:	Synergy Resources Corporation	Local Co-ordinate Reference:	Well HOOD 36N-22C-M
Project:	SEC 20-T6N-R66W	TVD Reference:	GL 4734 & 25' KB @ 4759.00ft (ASSUMED)
Site:	HOOD-DOLES 37-20 PAD	MD Reference:	GL 4734 & 25' KB @ 4759.00ft (ASSUMED)
Well:	HOOD 36N-22C-M	North Reference:	True
Wellbore:	OH	Survey Calculation Method:	Minimum Curvature
Design:	PLAN #2	Database:	EDM 5000.14 Single User Db

Planned Survey

Measured Depth (ft)	Inclination (°)	Azimuth (°)	Vertical Depth (ft)	+N/-S (ft)	+E/-W (ft)	Vertical Section (ft)	Dogleg Rate (°/100ft)	Build Rate (°/100ft)	Turn Rate (°/100ft)
14,700.00	89.52	90.53	7,064.53	-295.43	8,843.99	8,843.99	0.00	0.00	0.00
14,800.00	89.52	90.53	7,065.37	-296.37	8,943.98	8,943.98	0.00	0.00	0.00
14,875.61	89.52	90.53	7,066.00	-297.07	9,019.58	9,019.58	0.00	0.00	0.00

Design Targets

Target Name - hit/miss target - Shape	Dip Angle (°)	Dip Dir. (°)	TVD (ft)	+N/-S (ft)	+E/-W (ft)	Northing (ft)	Easting (ft)	Latitude	Longitude
TOP_HOOD 36N-22C-M - plan misses target center by 135.87ft at 7100.00ft MD (6888.54 TVD, -219.54 N, 1268.50 E) - Point	0.00	0.00	7,004.00	-216.00	1,196.97	1,413,795.32	3,196,961.35	40.4671040	-104.7921190
PBHL_HOOD 36N-22C- - plan hits target center - Point	0.00	0.00	7,066.00	-297.07	9,019.58	1,413,776.31	3,204,784.35	40.4668770	-104.7640040

Casing Points

Measured Depth (ft)	Vertical Depth (ft)	Name	Casing Diameter (in)	Hole Diameter (in)
1,750.00	1,750.00	9 5/8"	9.625	13.500

Plan Annotations

Measured Depth (ft)	Vertical Depth (ft)	Local Coordinates +N/-S (ft)	+E/-W (ft)	Comment
2000	2000	0	0	Start DLS 2.00 TFO 104.69
2708	2701	-17	85	Start 3937.87 hold at 2707.97 MD
6646	6522	-200	1017	Start DLS 9.00 TFO -15.16
7488	7004	-228	1633	LP(162 FSL 506 FWL)Start 7390.63 hold at 7488.43 MD
14,879				TD at 14879.06

Checked By: _____ Approved By: _____ Date: _____