

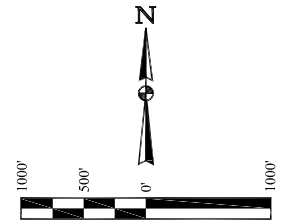
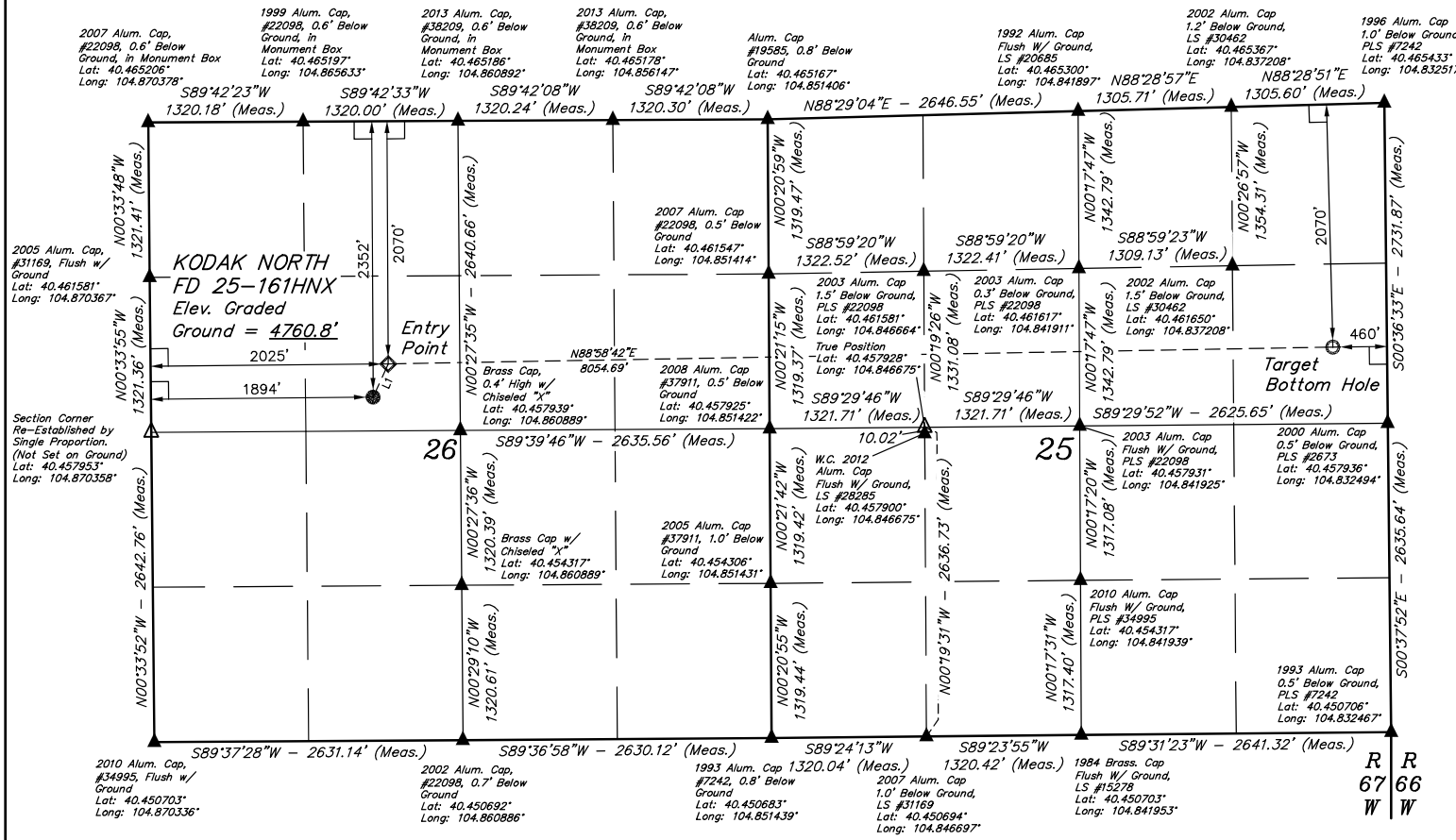
T6N, R67W, 6th P.M.

GREAT WESTERN OPERATING COMPANY

KODAK NORTH FD 25-161HNX
SE 1/4 NW 1/4, SECTION 26, T6N, R67W, 6th P.M.
WELD COUNTY, COLORADO

BASIS OF BEARINGS
BASIS OF BEARINGS IS A G.P.S. OBSERVATION
BASIS OF ELEVATION

USGS COOPERATIVE BASE NETWORK CONTROL STATION,
DESIGNATION 'VERMILYEA'. NGS DATA SHEET LISTS THE
NAVD 88 ELEVATION AS BEING 5026 FEET



- LEGEND:**
- = 90° SYMBOL
 - = PROPOSED WELLHEAD.
 - = ENTRY POINT.
 - ⊙ = TARGET BOTTOM HOLE.
 - ▲ = SECTION CORNERS LOCATED. (NAD 83)
 - △ = SECTION CORNERS RE-ESTABLISHED. (Not Set on Ground.) (NAD 83)

LINE TABLE		
LINE	DIRECTION	LENGTH
L1	N24°22'51"E	310.62'

NAD 83 (SURFACE LOCATION)	NAD 83 (ENTRY POINT)	NAD 83 (TARGET BOTTOM HOLE)
LATITUDE = 40°27'31.45" (40.458736)	LATITUDE = 40°27'34.24" (40.459511)	LATITUDE = 40°27'35.02" (40.459728)
LONGITUDE = 104°51'48.80" (104.863556)	LONGITUDE = 104°51'47.11" (104.863086)	LONGITUDE = 104°50'02.95" (104.834153)
NAD 27 (SURFACE LOCATION)	NAD 27 (ENTRY POINT)	NAD 27 (TARGET BOTTOM HOLE)
LATITUDE = 40°27'31.52" (40.458756)	LATITUDE = 40°27'34.30" (40.459528)	LATITUDE = 40°27'35.09" (40.459747)
LONGITUDE = 104°51'46.90" (104.863028)	LONGITUDE = 104°51'45.21" (104.862558)	LONGITUDE = 104°50'01.05" (104.833625)

CERTIFICATE

THIS IS TO CERTIFY THAT THE ABOVE SAID SURVEY WAS MADE IN ACCORDANCE WITH THE NOTES OF ACTUAL SURVEYS MADE BY ME OR UNDER MY SUPERVISION AND THAT THE SAME ARE TRUE AND CORRECT TO THE BEST OF MY KNOWLEDGE AND BELIEF.

[Signature]

REGISTERED LAND SURVEYOR
REGISTRATION NO. 28285
STATE OF COLORADO

REV: 2 11-02-16 E.C. (BOTTOM HOLE MOVE)

PDOP = 1.3

UINTAH
ENGINEERING & LAND SURVEYING

UELS, LLC
Corporate Office * 85 South 200 East
Vernal, UT 84078 * (435) 789-1017

SURVEYED BY: DALLAS NIELSEN, C.M. DATE: 10-21-13
DRAWN BY: L.C.S. DATE DRAWN: 10-05-16
SCALE: 1" = 1000'

WELL LOCATION PLAT