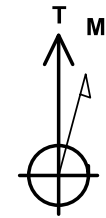




Project: SEC 20-T6N-R66W
Site: HOOD-DOLES 37-20 PAD
Well: HOOD 23N-22C-M
Wellbore: OH
Design: PLAN #2



Azimuths to True North
 Magnetic North: 8.29°

Magnetic Field
 Strength: 52482.6snT
 Dip Angle: 66.92°
 Date: 12/15/2016
 Model: IGRF2015

SECTION DETAILS

MD	Inc	Azi	TVD	+N/-S	+E/-W	Dleg	TFace	V/Sect	Target
0.00	0.00	0.00	0.00	0.00	0.00	0.00	0.00	0.00	
1850.00	0.00	0.00	1850.00	0.00	0.00	0.00	0.00	0.00	
2638.64	15.77	56.56	2628.72	59.44	90.01	2.00	56.56	90.01	
6707.67	15.77	56.56	6544.53	668.92	1013.00	0.00	0.00	1013.00	
7557.13	89.67	89.29	7030.00	750.26	1628.13	9.00	33.79	1628.13	
14953.80	89.67	89.29	7073.00	842.11	9024.11	0.00	0.00	9024.11	

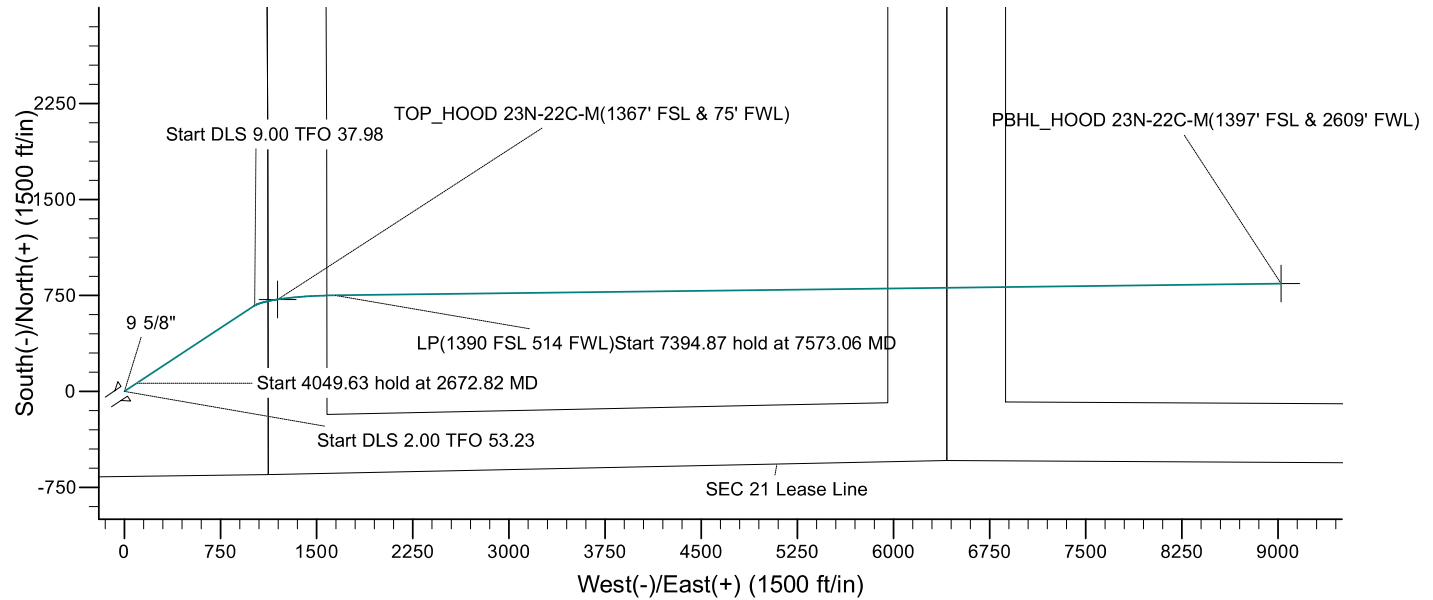
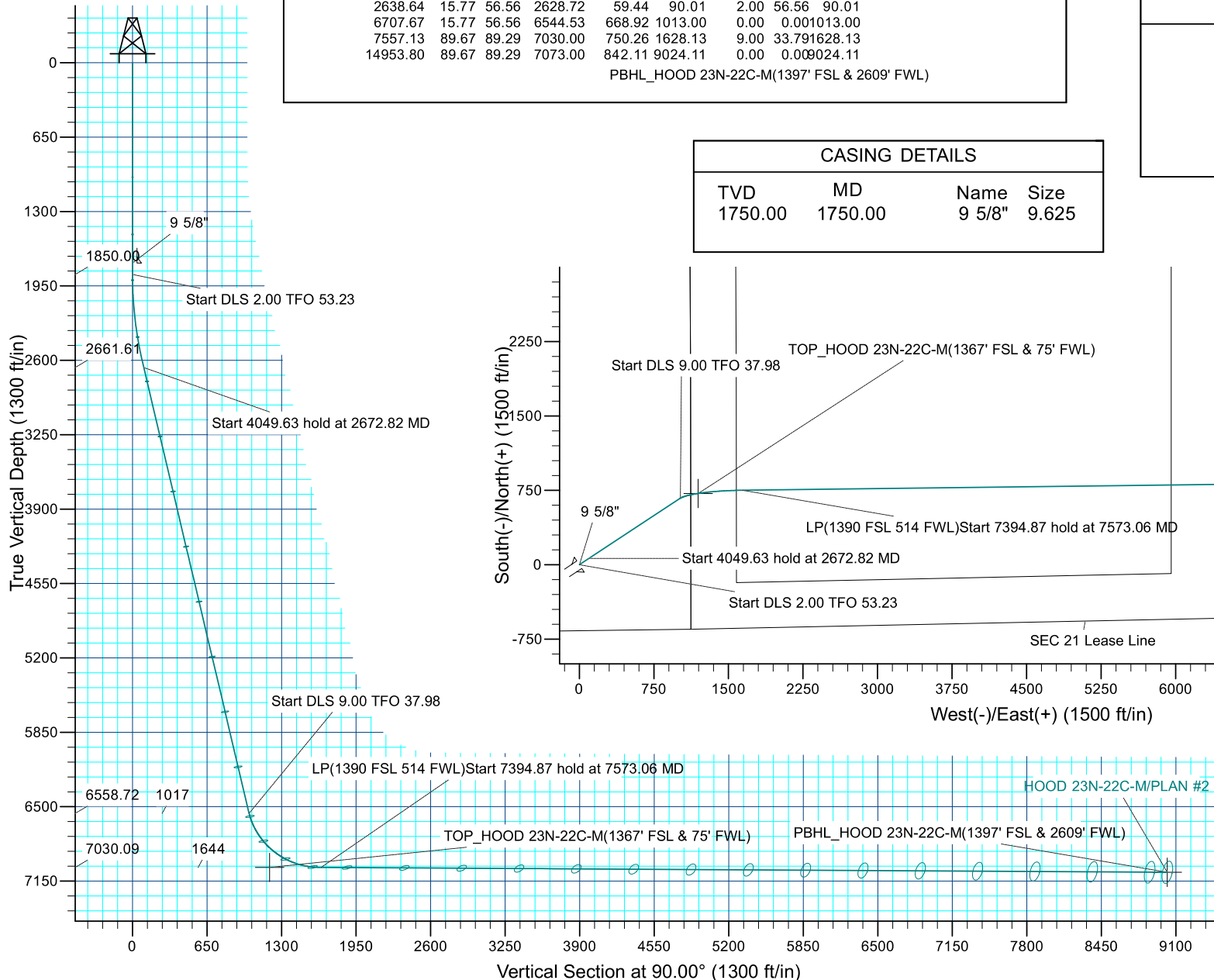
PBHL_HOOD 23N-22C-M(1397' FSL & 2609' FWL)

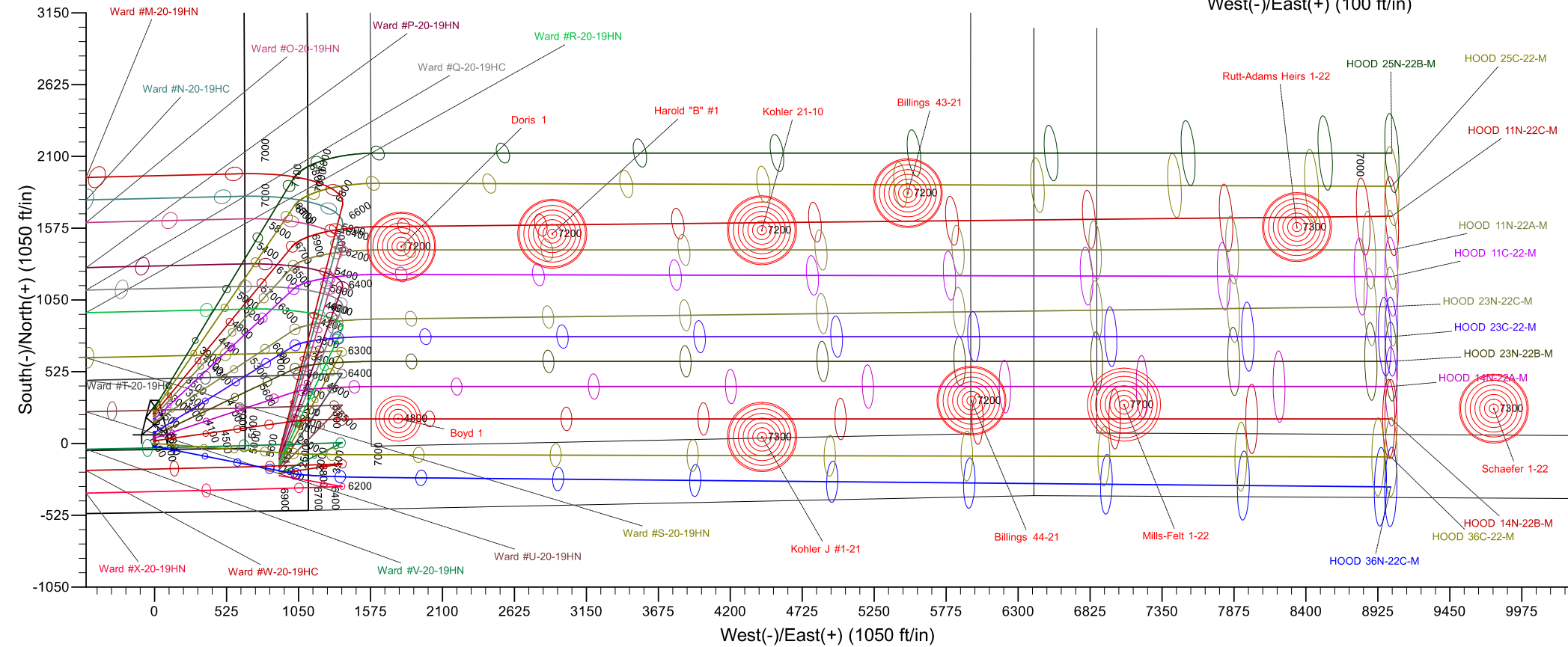
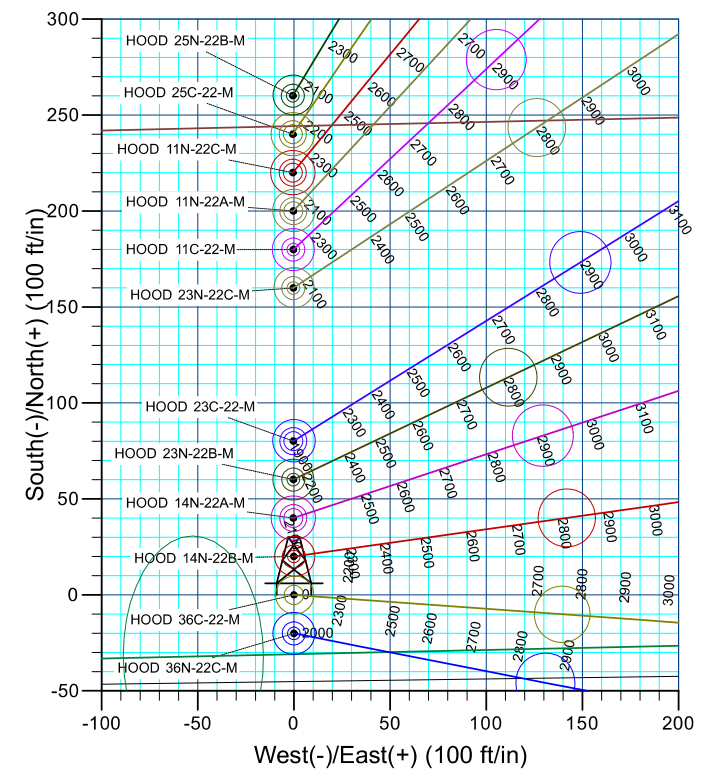
PROJECT DETAILS: SEC 20-T6N-R66W

Geodetic System: US State Plane 1983
 Datum: North American Datum 1983
 Ellipsoid: GRS 1980
 Zone: Colorado Northern Zone
 Colorado Northern Zone
 System Datum: Mean Sea Level

CASING DETAILS

TVD	MD	Name	Size
1750.00	1750.00	9 5/8"	9.625







Synergy Resources Corporation

SEC 20-T6N-R66W

HOOD-DOLES 37-20 PAD

HOOD 23N-22C-M

OH

Plan: PLAN #2

Standard Survey Report

20 December, 2016

Company:	Synergy Resources Corporation	Local Co-ordinate Reference:	Well HOOD 23N-22C-M
Project:	SEC 20-T6N-R66W	TVD Reference:	GL 4734 & 25' KB @ 4759.00ft (ASSUMED)
Site:	HOOD-DOLES 37-20 PAD	MD Reference:	GL 4734 & 25' KB @ 4759.00ft (ASSUMED)
Well:	HOOD 23N-22C-M	North Reference:	True
Wellbore:	OH	Survey Calculation Method:	Minimum Curvature
Design:	PLAN #2	Database:	EDM 5000.14 Single User Db

Project	SEC 20-T6N-R66W		
Map System:	US State Plane 1983	System Datum:	Mean Sea Level
Geo Datum:	North American Datum 1983		
Map Zone:	Colorado Northern Zone		

Site		HOOD-DOLES 37-20 PAD			
Site Position:		Northing:	1,414,281.96 ft	Latitude:	40.4684660
From:	Lat/Long	Easting:	3,195,759.92 ft	Longitude:	-104.7964230
Position Uncertainty:	4.92 ft	Slot Radius:	13.200 in	Grid Convergence:	0.45 °

Well		HOOD 23N-22C-M, 665' FSL & 1122' FEL				
Well Position	+N/-S	0.00 ft	Northing:	1,414,181.76 ft	Latitude:	40.4681910
	+E/-W	0.00 ft	Easting:	3,195,760.99 ft	Longitude:	-104.7964220
Position Uncertainty		3.28 ft	Wellhead Elevation:	ft	Ground Level:	4,734.00 ft

Wellbore	OH				
Magnetics	Model Name	Sample Date	Declination (°)	Dip Angle (°)	Field Strength (nT)
	IGRF2015	12/15/2016	8.29	66.92	52,483

Design	PLAN #2				
Audit Notes:					
Version:	Phase:	PLAN	Tie On Depth:	0.00	
Vertical Section:	Depth From (TVD) (ft)	+N/-S (ft)	+E/-W (ft)	Direction (°)	
	0.00	0.00	0.00	90.00	

Survey Tool Program	Date	12/20/2016			
From (ft)	To (ft)	Survey (Wellbore)	Tool Name	Description	
0.00	14,953.80	PLAN #2 (OH)	MWD+IFR1	OWSG MWD + IFR1	

Planned Survey										
Measured Depth (ft)	Inclination (°)	Azimuth (°)	Vertical Depth (ft)	+N/-S (ft)	+E/-W (ft)	Vertical Section (ft)	Dogleg Rate (°/100ft)	Build Rate (°/100ft)	Turn Rate (°/100ft)	
0.00	0.00	0.00	0.00	0.00	0.00	0.00	0.00	0.00	0.00	
1,750.00	0.00	0.00	1,750.00	0.00	0.00	0.00	0.00	0.00	0.00	
9 5/8"										
1,850.00	0.00	0.00	1,850.00	0.00	0.00	0.00	0.00	0.00	0.00	
Start DLS 2.00 TFO 53.23										
1,900.00	1.00	56.56	1,900.00	0.24	0.36	0.36	2.00	2.00	0.00	
2,000.00	3.00	56.56	1,999.93	2.16	3.28	3.28	2.00	2.00	0.00	
2,100.00	5.00	56.56	2,099.68	6.01	9.10	9.10	2.00	2.00	0.00	
2,200.00	7.00	56.56	2,199.13	11.77	17.82	17.82	2.00	2.00	0.00	
2,300.00	9.00	56.56	2,298.15	19.44	29.43	29.43	2.00	2.00	0.00	

Company:	Synergy Resources Corporation	Local Co-ordinate Reference:	Well HOOD 23N-22C-M
Project:	SEC 20-T6N-R66W	TVD Reference:	GL 4734 & 25' KB @ 4759.00ft (ASSUMED)
Site:	HOOD-DOLES 37-20 PAD	MD Reference:	GL 4734 & 25' KB @ 4759.00ft (ASSUMED)
Well:	HOOD 23N-22C-M	North Reference:	True
Wellbore:	OH	Survey Calculation Method:	Minimum Curvature
Design:	PLAN #2	Database:	EDM 5000.14 Single User Db

Planned Survey

Measured Depth (ft)	Inclination (°)	Azimuth (°)	Vertical Depth (ft)	+N/-S (ft)	+E/-W (ft)	Vertical Section (ft)	Dogleg Rate (°/100ft)	Build Rate (°/100ft)	Turn Rate (°/100ft)
2,400.00	11.00	56.56	2,396.63	29.00	43.92	43.92	2.00	2.00	0.00
2,500.00	13.00	56.56	2,494.44	40.46	61.27	61.27	2.00	2.00	0.00
2,600.00	15.00	56.56	2,591.46	53.79	81.46	81.46	2.00	2.00	0.00
2,638.64	15.77	56.56	2,628.72	59.44	90.01	90.01	2.00	2.00	0.00
2,672.82	15.77	56.56	2,661.61	64.56	97.77	97.77	0.00	0.00	0.00
Start 4049.63 hold at 2672.82 MD									
2,700.00	15.77	56.56	2,687.77	68.63	103.93	103.93	0.00	0.00	0.00
2,800.00	15.77	56.56	2,784.00	83.61	126.62	126.62	0.00	0.00	0.00
2,900.00	15.77	56.56	2,880.24	98.59	149.30	149.30	0.00	0.00	0.00
3,000.00	15.77	56.56	2,976.47	113.57	171.98	171.98	0.00	0.00	0.00
3,100.00	15.77	56.56	3,072.71	128.54	194.66	194.66	0.00	0.00	0.00
3,200.00	15.77	56.56	3,168.94	143.52	217.35	217.35	0.00	0.00	0.00
3,300.00	15.77	56.56	3,265.17	158.50	240.03	240.03	0.00	0.00	0.00
3,400.00	15.77	56.56	3,361.41	173.48	262.71	262.71	0.00	0.00	0.00
3,500.00	15.77	56.56	3,457.64	188.46	285.40	285.40	0.00	0.00	0.00
3,600.00	15.77	56.56	3,553.88	203.44	308.08	308.08	0.00	0.00	0.00
3,700.00	15.77	56.56	3,650.11	218.42	330.76	330.76	0.00	0.00	0.00
3,800.00	15.77	56.56	3,746.35	233.39	353.45	353.45	0.00	0.00	0.00
3,900.00	15.77	56.56	3,842.58	248.37	376.13	376.13	0.00	0.00	0.00
4,000.00	15.77	56.56	3,938.82	263.35	398.81	398.81	0.00	0.00	0.00
4,100.00	15.77	56.56	4,035.05	278.33	421.50	421.50	0.00	0.00	0.00
4,200.00	15.77	56.56	4,131.29	293.31	444.18	444.18	0.00	0.00	0.00
4,300.00	15.77	56.56	4,227.52	308.29	466.86	466.86	0.00	0.00	0.00
4,400.00	15.77	56.56	4,323.76	323.27	489.55	489.55	0.00	0.00	0.00
4,500.00	15.77	56.56	4,419.99	338.24	512.23	512.23	0.00	0.00	0.00
4,600.00	15.77	56.56	4,516.23	353.22	534.91	534.91	0.00	0.00	0.00
4,700.00	15.77	56.56	4,612.46	368.20	557.60	557.60	0.00	0.00	0.00
4,800.00	15.77	56.56	4,708.69	383.18	580.28	580.28	0.00	0.00	0.00
4,900.00	15.77	56.56	4,804.93	398.16	602.96	602.96	0.00	0.00	0.00
5,000.00	15.77	56.56	4,901.16	413.14	625.65	625.65	0.00	0.00	0.00
5,100.00	15.77	56.56	4,997.40	428.12	648.33	648.33	0.00	0.00	0.00
5,200.00	15.77	56.56	5,093.63	443.09	671.01	671.01	0.00	0.00	0.00
5,300.00	15.77	56.56	5,189.87	458.07	693.70	693.70	0.00	0.00	0.00
5,400.00	15.77	56.56	5,286.10	473.05	716.38	716.38	0.00	0.00	0.00
5,500.00	15.77	56.56	5,382.34	488.03	739.06	739.06	0.00	0.00	0.00
5,600.00	15.77	56.56	5,478.57	503.01	761.75	761.75	0.00	0.00	0.00
5,700.00	15.77	56.56	5,574.81	517.99	784.43	784.43	0.00	0.00	0.00
5,800.00	15.77	56.56	5,671.04	532.96	807.11	807.11	0.00	0.00	0.00
5,900.00	15.77	56.56	5,767.28	547.94	829.80	829.80	0.00	0.00	0.00
6,000.00	15.77	56.56	5,863.51	562.92	852.48	852.48	0.00	0.00	0.00
6,100.00	15.77	56.56	5,959.75	577.90	875.16	875.16	0.00	0.00	0.00
6,200.00	15.77	56.56	6,055.98	592.88	897.85	897.85	0.00	0.00	0.00
6,300.00	15.77	56.56	6,152.21	607.86	920.53	920.53	0.00	0.00	0.00

Company:	Synergy Resources Corporation	Local Co-ordinate Reference:	Well HOOD 23N-22C-M
Project:	SEC 20-T6N-R66W	TVD Reference:	GL 4734 & 25' KB @ 4759.00ft (ASSUMED)
Site:	HOOD-DOLES 37-20 PAD	MD Reference:	GL 4734 & 25' KB @ 4759.00ft (ASSUMED)
Well:	HOOD 23N-22C-M	North Reference:	True
Wellbore:	OH	Survey Calculation Method:	Minimum Curvature
Design:	PLAN #2	Database:	EDM 5000.14 Single User Db

Planned Survey

Measured Depth (ft)	Inclination (°)	Azimuth (°)	Vertical Depth (ft)	+N/-S (ft)	+E/-W (ft)	Vertical Section (ft)	Dogleg Rate (°/100ft)	Build Rate (°/100ft)	Turn Rate (°/100ft)
6,400.00	15.77	56.56	6,248.45	622.84	943.21	943.21	0.00	0.00	0.00
6,500.00	15.77	56.56	6,344.68	637.81	965.89	965.89	0.00	0.00	0.00
6,600.00	15.77	56.56	6,440.92	652.79	988.58	988.58	0.00	0.00	0.00
6,700.00	15.77	56.56	6,537.15	667.77	1,011.26	1,011.26	0.00	0.00	0.00
6,707.67	15.77	56.56	6,544.53	668.92	1,013.00	1,013.00	0.00	0.00	0.00
6,722.45	16.89	59.11	6,558.72	671.13	1,016.52	1,016.52	9.00	7.59	17.23
Start DLS 9.00 TFO 37.98									
6,800.00	23.13	68.37	6,631.57	682.55	1,040.38	1,040.38	9.00	8.05	11.94
6,900.00	31.62	74.96	6,720.31	696.62	1,084.05	1,084.05	9.00	8.49	6.59
7,000.00	40.31	78.96	6,801.18	709.65	1,141.23	1,141.23	9.00	8.69	4.00
7,100.00	49.10	81.73	6,872.18	721.31	1,210.52	1,210.52	9.00	8.79	2.77
7,200.00	57.94	83.84	6,931.58	731.31	1,290.22	1,290.22	9.00	8.84	2.12
7,300.00	66.81	85.58	6,977.91	739.41	1,378.35	1,378.35	9.00	8.87	1.74
7,400.00	75.69	87.10	7,010.02	745.41	1,472.75	1,472.75	9.00	8.88	1.52
7,500.00	84.58	88.51	7,027.14	749.16	1,571.10	1,571.10	9.00	8.89	1.40
7,557.13	89.67	89.29	7,030.00	750.26	1,628.13	1,628.13	9.00	8.90	1.36
7,573.06	89.67	89.29	7,030.09	750.45	1,644.06	1,644.06	0.00	0.00	0.00
LP(1482 FSL 514 FWL)Start 7394.87 hold at 7573.06 MD									
7,600.00	89.67	89.29	7,030.25	750.79	1,671.00	1,671.00	0.00	0.00	0.00
7,700.00	89.67	89.29	7,030.83	752.03	1,770.99	1,770.99	0.00	0.00	0.00
7,800.00	89.67	89.29	7,031.41	753.27	1,870.98	1,870.98	0.00	0.00	0.00
7,900.00	89.67	89.29	7,031.99	754.51	1,970.97	1,970.97	0.00	0.00	0.00
8,000.00	89.67	89.29	7,032.57	755.76	2,070.96	2,070.96	0.00	0.00	0.00
8,100.00	89.67	89.29	7,033.16	757.00	2,170.95	2,170.95	0.00	0.00	0.00
8,200.00	89.67	89.29	7,033.74	758.24	2,270.94	2,270.94	0.00	0.00	0.00
8,300.00	89.67	89.29	7,034.32	759.48	2,370.93	2,370.93	0.00	0.00	0.00
8,400.00	89.67	89.29	7,034.90	760.72	2,470.92	2,470.92	0.00	0.00	0.00
8,500.00	89.67	89.29	7,035.48	761.96	2,570.91	2,570.91	0.00	0.00	0.00
8,600.00	89.67	89.29	7,036.06	763.21	2,670.90	2,670.90	0.00	0.00	0.00
8,700.00	89.67	89.29	7,036.64	764.45	2,770.89	2,770.89	0.00	0.00	0.00
8,800.00	89.67	89.29	7,037.23	765.69	2,870.89	2,870.89	0.00	0.00	0.00
8,900.00	89.67	89.29	7,037.81	766.93	2,970.88	2,970.88	0.00	0.00	0.00
9,000.00	89.67	89.29	7,038.39	768.17	3,070.87	3,070.87	0.00	0.00	0.00
9,100.00	89.67	89.29	7,038.97	769.42	3,170.86	3,170.86	0.00	0.00	0.00
9,200.00	89.67	89.29	7,039.55	770.66	3,270.85	3,270.85	0.00	0.00	0.00
9,300.00	89.67	89.29	7,040.13	771.90	3,370.84	3,370.84	0.00	0.00	0.00
9,400.00	89.67	89.29	7,040.71	773.14	3,470.83	3,470.83	0.00	0.00	0.00
9,500.00	89.67	89.29	7,041.29	774.38	3,570.82	3,570.82	0.00	0.00	0.00
9,600.00	89.67	89.29	7,041.88	775.63	3,670.81	3,670.81	0.00	0.00	0.00
9,700.00	89.67	89.29	7,042.46	776.87	3,770.80	3,770.80	0.00	0.00	0.00
9,800.00	89.67	89.29	7,043.04	778.11	3,870.79	3,870.79	0.00	0.00	0.00
9,900.00	89.67	89.29	7,043.62	779.35	3,970.78	3,970.78	0.00	0.00	0.00
10,000.00	89.67	89.29	7,044.20	780.59	4,070.77	4,070.77	0.00	0.00	0.00
10,100.00	89.67	89.29	7,044.78	781.84	4,170.76	4,170.76	0.00	0.00	0.00

Company:	Synergy Resources Corporation	Local Co-ordinate Reference:	Well HOOD 23N-22C-M
Project:	SEC 20-T6N-R66W	TVD Reference:	GL 4734 & 25' KB @ 4759.00ft (ASSUMED)
Site:	HOOD-DOLES 37-20 PAD	MD Reference:	GL 4734 & 25' KB @ 4759.00ft (ASSUMED)
Well:	HOOD 23N-22C-M	North Reference:	True
Wellbore:	OH	Survey Calculation Method:	Minimum Curvature
Design:	PLAN #2	Database:	EDM 5000.14 Single User Db

Planned Survey									
Measured Depth (ft)	Inclination (°)	Azimuth (°)	Vertical Depth (ft)	+N/-S (ft)	+E/-W (ft)	Vertical Section (ft)	Dogleg Rate (°/100ft)	Build Rate (°/100ft)	Turn Rate (°/100ft)
10,200.00	89.67	89.29	7,045.36	783.08	4,270.75	4,270.75	0.00	0.00	0.00
10,300.00	89.67	89.29	7,045.95	784.32	4,370.74	4,370.74	0.00	0.00	0.00
10,400.00	89.67	89.29	7,046.53	785.56	4,470.73	4,470.73	0.00	0.00	0.00
10,500.00	89.67	89.29	7,047.11	786.80	4,570.73	4,570.73	0.00	0.00	0.00
10,600.00	89.67	89.29	7,047.69	788.04	4,670.72	4,670.72	0.00	0.00	0.00
10,700.00	89.67	89.29	7,048.27	789.29	4,770.71	4,770.71	0.00	0.00	0.00
10,800.00	89.67	89.29	7,048.85	790.53	4,870.70	4,870.70	0.00	0.00	0.00
10,900.00	89.67	89.29	7,049.43	791.77	4,970.69	4,970.69	0.00	0.00	0.00
11,000.00	89.67	89.29	7,050.01	793.01	5,070.68	5,070.68	0.00	0.00	0.00
11,100.00	89.67	89.29	7,050.60	794.25	5,170.67	5,170.67	0.00	0.00	0.00
11,200.00	89.67	89.29	7,051.18	795.50	5,270.66	5,270.66	0.00	0.00	0.00
11,300.00	89.67	89.29	7,051.76	796.74	5,370.65	5,370.65	0.00	0.00	0.00
11,400.00	89.67	89.29	7,052.34	797.98	5,470.64	5,470.64	0.00	0.00	0.00
11,500.00	89.67	89.29	7,052.92	799.22	5,570.63	5,570.63	0.00	0.00	0.00
11,600.00	89.67	89.29	7,053.50	800.46	5,670.62	5,670.62	0.00	0.00	0.00
11,700.00	89.67	89.29	7,054.08	801.71	5,770.61	5,770.61	0.00	0.00	0.00
11,800.00	89.67	89.29	7,054.67	802.95	5,870.60	5,870.60	0.00	0.00	0.00
11,900.00	89.67	89.29	7,055.25	804.19	5,970.59	5,970.59	0.00	0.00	0.00
12,000.00	89.67	89.29	7,055.83	805.43	6,070.58	6,070.58	0.00	0.00	0.00
12,100.00	89.67	89.29	7,056.41	806.67	6,170.57	6,170.57	0.00	0.00	0.00
12,200.00	89.67	89.29	7,056.99	807.92	6,270.57	6,270.57	0.00	0.00	0.00
12,300.00	89.67	89.29	7,057.57	809.16	6,370.56	6,370.56	0.00	0.00	0.00
12,400.00	89.67	89.29	7,058.15	810.40	6,470.55	6,470.55	0.00	0.00	0.00
12,500.00	89.67	89.29	7,058.74	811.64	6,570.54	6,570.54	0.00	0.00	0.00
12,600.00	89.67	89.29	7,059.32	812.88	6,670.53	6,670.53	0.00	0.00	0.00
12,700.00	89.67	89.29	7,059.90	814.12	6,770.52	6,770.52	0.00	0.00	0.00
12,800.00	89.67	89.29	7,060.48	815.37	6,870.51	6,870.51	0.00	0.00	0.00
12,900.00	89.67	89.29	7,061.06	816.61	6,970.50	6,970.50	0.00	0.00	0.00
13,000.00	89.67	89.29	7,061.64	817.85	7,070.49	7,070.49	0.00	0.00	0.00
13,100.00	89.67	89.29	7,062.22	819.09	7,170.48	7,170.48	0.00	0.00	0.00
13,200.00	89.67	89.29	7,062.80	820.33	7,270.47	7,270.47	0.00	0.00	0.00
13,300.00	89.67	89.29	7,063.39	821.58	7,370.46	7,370.46	0.00	0.00	0.00
13,400.00	89.67	89.29	7,063.97	822.82	7,470.45	7,470.45	0.00	0.00	0.00
13,500.00	89.67	89.29	7,064.55	824.06	7,570.44	7,570.44	0.00	0.00	0.00
13,600.00	89.67	89.29	7,065.13	825.30	7,670.43	7,670.43	0.00	0.00	0.00
13,700.00	89.67	89.29	7,065.71	826.54	7,770.42	7,770.42	0.00	0.00	0.00
13,800.00	89.67	89.29	7,066.29	827.79	7,870.42	7,870.42	0.00	0.00	0.00
13,900.00	89.67	89.29	7,066.87	829.03	7,970.41	7,970.41	0.00	0.00	0.00
14,000.00	89.67	89.29	7,067.46	830.27	8,070.40	8,070.40	0.00	0.00	0.00
14,100.00	89.67	89.29	7,068.04	831.51	8,170.39	8,170.39	0.00	0.00	0.00
14,200.00	89.67	89.29	7,068.62	832.75	8,270.38	8,270.38	0.00	0.00	0.00
14,300.00	89.67	89.29	7,069.20	834.00	8,370.37	8,370.37	0.00	0.00	0.00
14,400.00	89.67	89.29	7,069.78	835.24	8,470.36	8,470.36	0.00	0.00	0.00

Company:	Synergy Resources Corporation	Local Co-ordinate Reference:	Well HOOD 23N-22C-M
Project:	SEC 20-T6N-R66W	TVD Reference:	GL 4734 & 25' KB @ 4759.00ft (ASSUMED)
Site:	HOOD-DOLES 37-20 PAD	MD Reference:	GL 4734 & 25' KB @ 4759.00ft (ASSUMED)
Well:	HOOD 23N-22C-M	North Reference:	True
Wellbore:	OH	Survey Calculation Method:	Minimum Curvature
Design:	PLAN #2	Database:	EDM 5000.14 Single User Db

Planned Survey									
Measured Depth (ft)	Inclination (°)	Azimuth (°)	Vertical Depth (ft)	+N/-S (ft)	+E/-W (ft)	Vertical Section (ft)	Dogleg Rate (°/100ft)	Build Rate (°/100ft)	Turn Rate (°/100ft)
14,500.00	89.67	89.29	7,070.36	836.48	8,570.35	8,570.35	0.00	0.00	0.00
14,600.00	89.67	89.29	7,070.94	837.72	8,670.34	8,670.34	0.00	0.00	0.00
14,700.00	89.67	89.29	7,071.52	838.96	8,770.33	8,770.33	0.00	0.00	0.00
14,800.00	89.67	89.29	7,072.11	840.20	8,870.32	8,870.32	0.00	0.00	0.00
14,900.00	89.67	89.29	7,072.69	841.45	8,970.31	8,970.31	0.00	0.00	0.00
14,953.80	89.67	89.29	7,073.00	842.11	9,024.11	9,024.11	0.00	0.00	0.00

Design Targets									
Target Name	Dip Angle (°)	Dip Dir. (°)	TVD (ft)	+N/-S (ft)	+E/-W (ft)	Northing (ft)	Easting (ft)	Latitude	Longitude
TOP_HOOD 23N-22C-M - hit/miss target - Shape - Point	0.00	0.00	7,030.00	718.86	1,195.24	1,414,910.08	3,196,950.49	40.4701641	-104.7921260
- plan misses target center by 134.92ft at 7181.49ft MD (6921.53 TVD, 729.59 N, 1274.76 E)									
PBHL_HOOD 23N-22C- - plan hits target center - Point	0.00	0.00	7,073.00	842.11	9,024.11	1,415,095.45	3,204,778.14	40.4704980	-104.7639870

Casing Points					
Measured Depth (ft)	Vertical Depth (ft)	Name	Casing Diameter (in)	Hole Diameter (in)	
1,750.00	1,750.00	9 5/8"	9.625	13.500	

Plan Annotations				
Measured Depth (ft)	Vertical Depth (ft)	+N/-S (ft)	+E/-W (ft)	Comment
1850	1850	0	0	Start DLS 2.00 TFO 53.23
2673	2662	65	98	Start 4049.63 hold at 2672.82 MD
6722	6559	671	1017	Start DLS 9.00 TFO 37.98
7573	7030	750	1644	LP(1482 FSL 514 FWL)Start 7394.87 hold at 7573.06 MD
14,968				TD at 14967.93

Checked By: _____ Approved By: _____ Date: _____