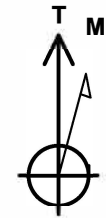




Project: SEC 20-T6N-R66W
Site: HOOD-DOLES 37-20 PAD
Well: HOOD 25C-22-M
Wellbore: OH
Design: PLAN #2



Azimuths to True North
 Magnetic North: 8.29°

Magnetic Field
 Strength: 52482.7snT
 Dip Angle: 66.92°
 Date: 12/15/2016
 Model: IGRF2015

SECTION DETAILS

MD	Inc	Azi	TVD	+N/-S	+E/-W	Dleg	TFace	VSect	Target
0.00	0.00	0.00	0.00	0.00	0.00	0.00	0.00	0.00	
1950.00	0.00	0.00	1950.00	0.00	0.00	0.00	0.00	0.00	
3134.77	23.70	34.23	3101.28	199.69	135.84	2.00	34.23	135.84	
7041.90	23.70	34.23	6679.02	1497.95	1019.00	0.00	0.00	1019.00	
7893.71	89.65	90.16	7143.00	1663.78	1636.11	9.00	58.36	1636.11	
15284.89	89.65	90.16	7188.00	1642.85	9027.12	0.00	0.00	9027.12	

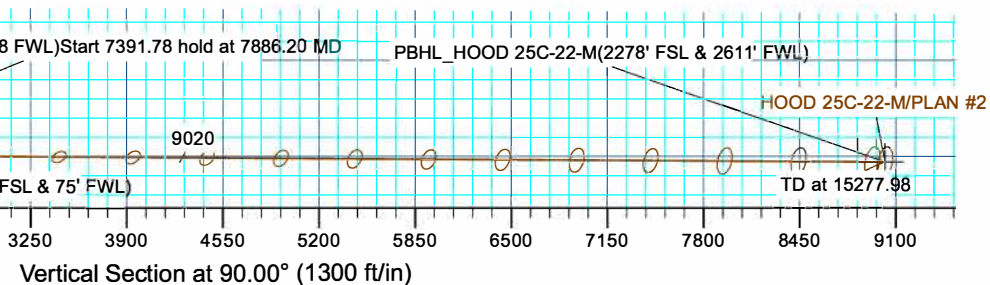
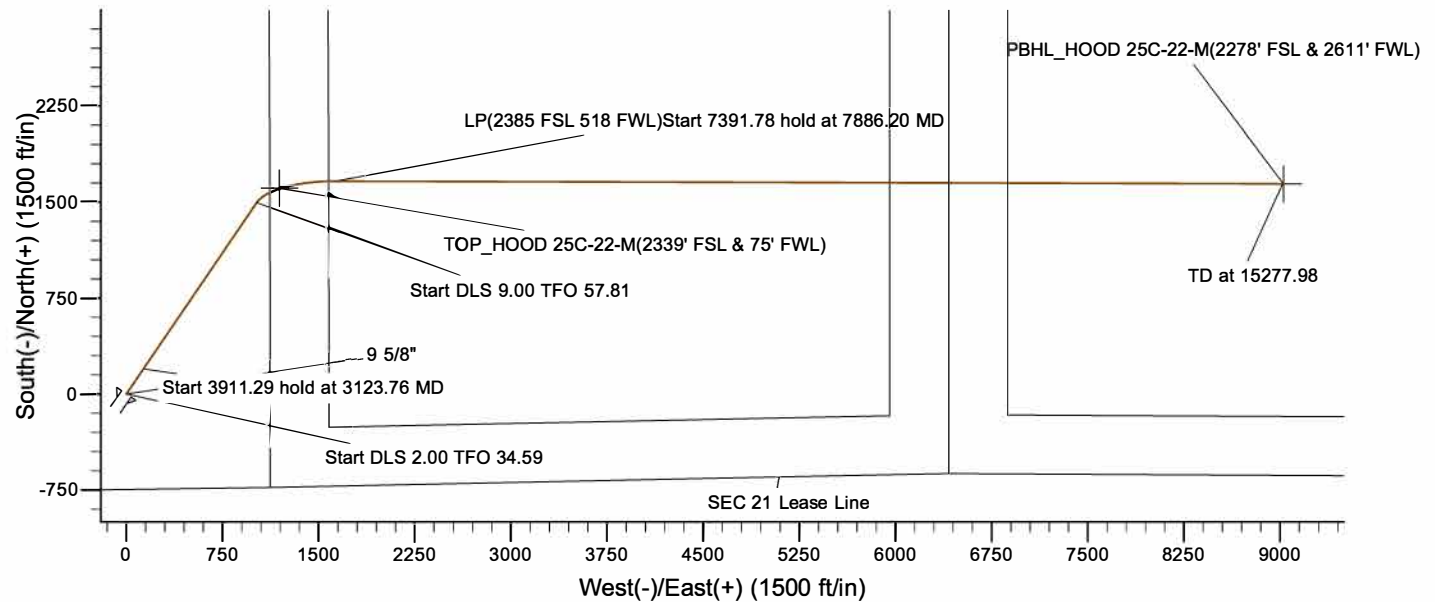
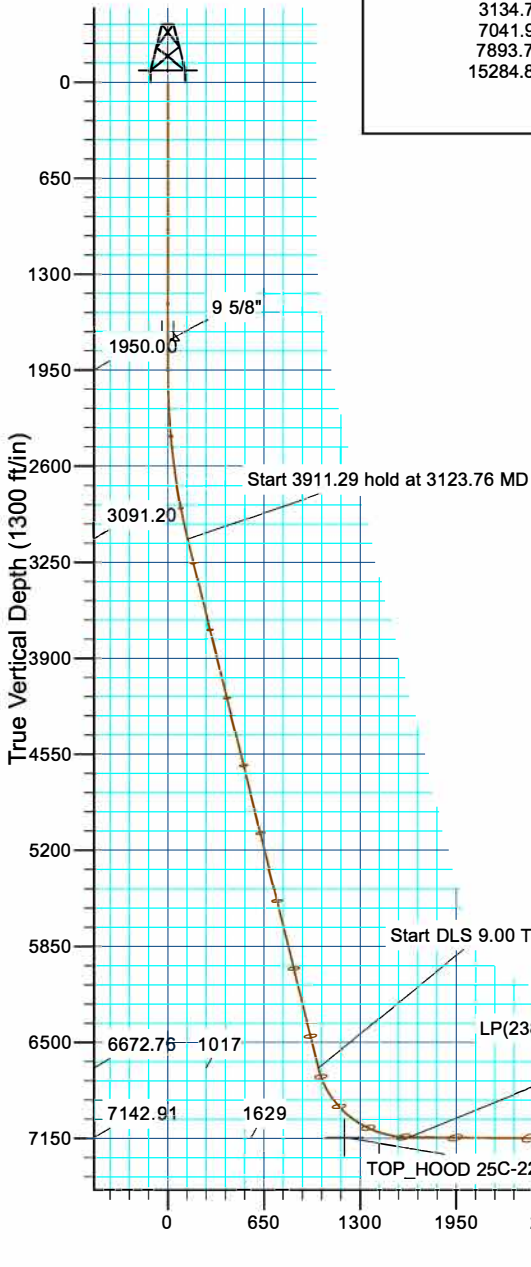
PBHL_HOOD 25C-22-M(2278' FSL & 2611' FWL)

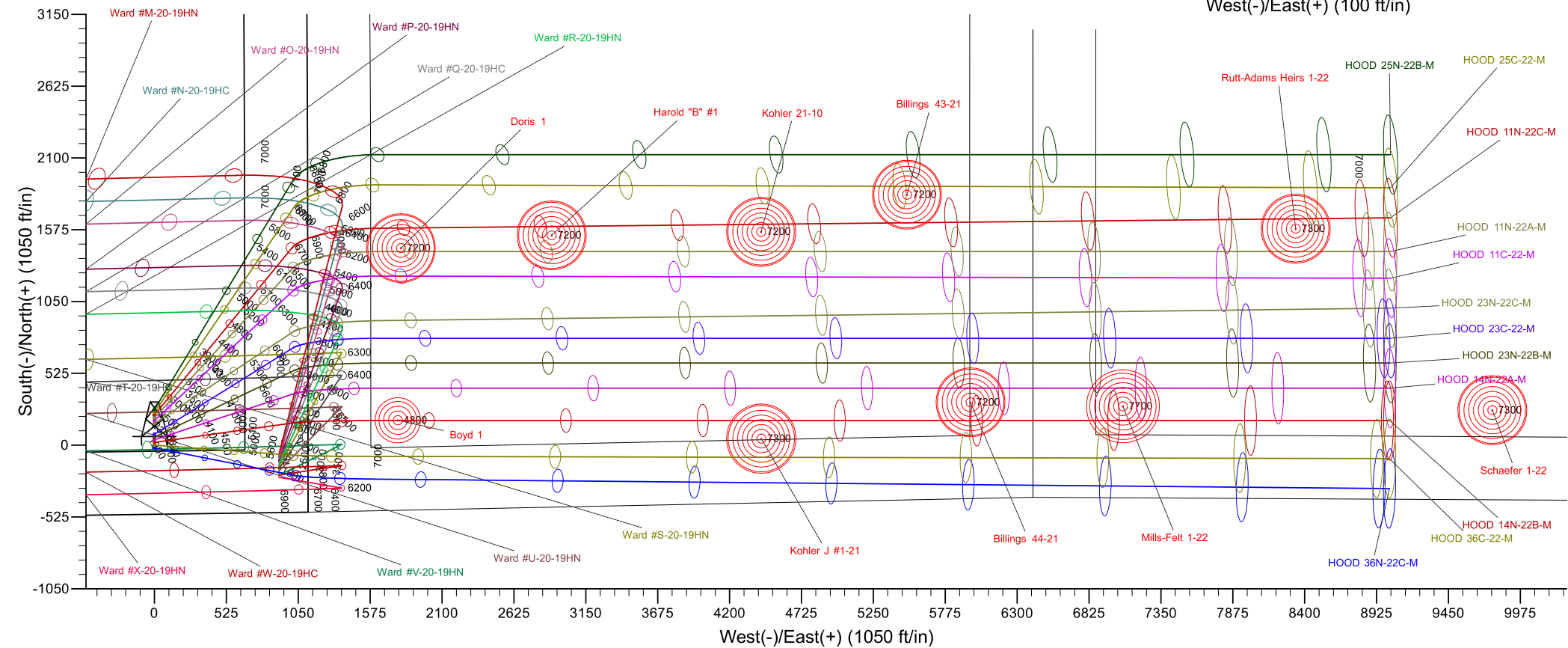
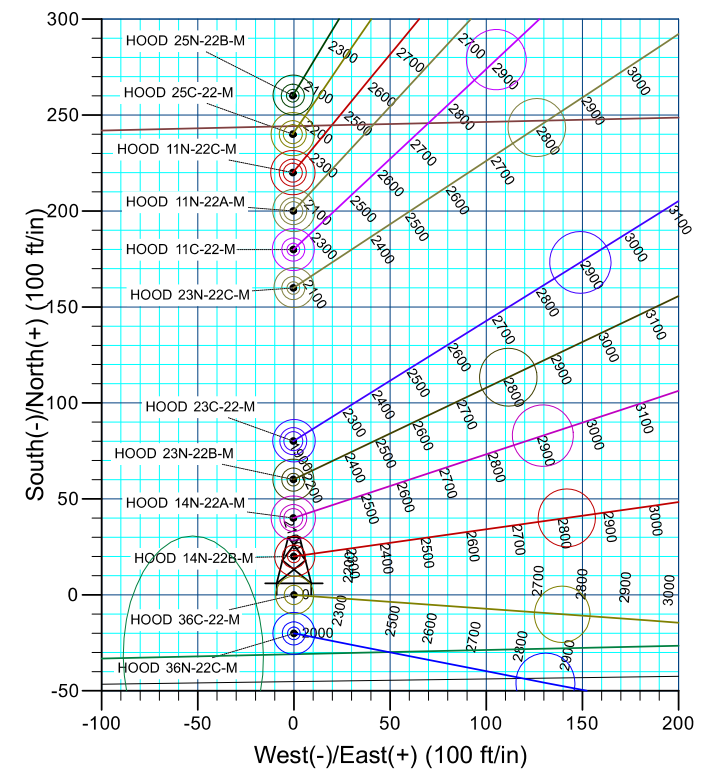
PROJECT DETAILS: SEC 20-T6N-R66W

Geodetic System: US State Plane 1983
 Datum: North American Datum 1983
 Ellipsoid: GRS 1980
 Zone: Colorado Northern Zone
 Colorado Northern Zone
 System Datum: Mean Sea Level

CASING DETAILS

TVD	MD	Name	Size
1750.00	1750.00	9 5/8"	9.625







Synergy Resources Corporation

SEC 20-T6N-R66W

HOOD-DOLES 37-20 PAD

HOOD 25C-22-M

OH

Plan: PLAN #2

Standard Survey Report

20 December, 2016

Company:	Synergy Resources Corporation	Local Co-ordinate Reference:	Well HOOD 25C-22-M
Project:	SEC 20-T6N-R66W	TVD Reference:	GL 4734 & 25' KB GL 4734 & 25' KB @ 4759.00ft (ASSUMED)
Site:	HOOD-DOLES 37-20 PAD	MD Reference:	GL 4734 & 25' KB GL 4734 & 25' KB @ 4759.00ft (ASSUMED)
Well:	HOOD 25C-22-M	North Reference:	True
Wellbore:	OH	Survey Calculation Method:	Minimum Curvature
Design:	PLAN #2	Database:	EDM 5000.14 Single User Db

Project	SEC 20-T6N-R66W		
Map System:	US State Plane 1983	System Datum:	Mean Sea Level
Geo Datum:	North American Datum 1983		
Map Zone:	Colorado Northern Zone		

Site		HOOD-DOLES 37-20 PAD			
Site Position:		Northing:	1,414,281.96 ft	Latitude:	40.4684660
From:	Lat/Long	Easting:	3,195,759.92 ft	Longitude:	-104.7964230
Position Uncertainty:	4.92 ft	Slot Radius:	13.200 in	Grid Convergence:	0.45 °

Well	HOOD 25C-22-M, 745' FSL & 1122' FEL					
Well Position	+N/-S	0.00 ft	Northing:	1,414,261.91 ft	Latitude:	40.4684110
	+E/-W	0.00 ft	Easting:	3,195,760.08 ft	Longitude:	-104.7964230
Position Uncertainty		4.92 ft	Wellhead Elevation:	ft	Ground Level:	4,734.00 ft

Wellbore	OH				
Magnetics	Model Name	Sample Date	Declination (°)	Dip Angle (°)	Field Strength (nT)
	IGRF2015	12/15/2016	8.29	66.92	52,483

Design	PLAN #2			
Audit Notes:				
Version:	Phase:	PLAN	Tie On Depth:	0.00
Vertical Section:	Depth From (TVD) (ft)	+N/-S (ft)	+E/-W (ft)	Direction (°)
	0.00	0.00	0.00	90.00

Survey Tool Program	Date	12/20/2016			
From (ft)	To (ft)	Survey (Wellbore)	Tool Name	Description	
0.00	15,284.65	PLAN #2 (OH)	MWD+IFR1	OWSG MWD + IFR1	

Planned Survey									
Measured Depth (ft)	Inclination (°)	Azimuth (°)	Vertical Depth (ft)	+N/-S (ft)	+E/-W (ft)	Vertical Section (ft)	Dogleg Rate (°/100ft)	Build Rate (°/100ft)	Turn Rate (°/100ft)
0.00	0.00	0.00	0.00	0.00	0.00	0.00	0.00	0.00	0.00
1,750.00	0.00	0.00	1,750.00	0.00	0.00	0.00	0.00	0.00	0.00
9 5/8"									
1,950.00	0.00	0.00	1,950.00	0.00	0.00	0.00	0.00	0.00	0.00
Start DLS 2.00 TFO 34.59									
2,000.00	1.00	34.23	2,000.00	0.36	0.25	0.25	2.00	2.00	0.00
2,100.00	3.00	34.23	2,099.93	3.25	2.21	2.21	2.00	2.00	0.00
2,200.00	5.00	34.23	2,199.68	9.01	6.13	6.13	2.00	2.00	0.00
2,300.00	7.00	34.23	2,299.13	17.66	12.01	12.01	2.00	2.00	0.00

Company:	Synergy Resources Corporation	Local Co-ordinate Reference:	Well HOOD 25C-22-M
Project:	SEC 20-T6N-R66W	TVD Reference:	GL 4734 & 25' KB GL 4734 & 25' KB @ 4759.00ft (ASSUMED)
Site:	HOOD-DOLES 37-20 PAD	MD Reference:	GL 4734 & 25' KB GL 4734 & 25' KB @ 4759.00ft (ASSUMED)
Well:	HOOD 25C-22-M	North Reference:	True
Wellbore:	OH	Survey Calculation Method:	Minimum Curvature
Design:	PLAN #2	Database:	EDM 5000.14 Single User Db

Planned Survey										
Measured Depth (ft)	Inclination (°)	Azimuth (°)	Vertical Depth (ft)	+N/-S (ft)	+E/-W (ft)	Vertical Section (ft)	Dogleg Rate (°/100ft)	Build Rate (°/100ft)	Turn Rate (°/100ft)	
2,400.00	9.00	34.23	2,398.15	29.16	19.84	19.84	2.00	2.00	0.00	
2,500.00	11.00	34.23	2,496.63	43.52	29.60	29.60	2.00	2.00	0.00	
2,600.00	13.00	34.23	2,594.44	60.71	41.30	41.30	2.00	2.00	0.00	
2,700.00	15.00	34.23	2,691.46	80.71	54.90	54.90	2.00	2.00	0.00	
2,800.00	17.00	34.23	2,787.58	103.50	70.41	70.41	2.00	2.00	0.00	
2,900.00	19.00	34.23	2,882.68	129.05	87.79	87.79	2.00	2.00	0.00	
3,000.00	21.00	34.23	2,976.65	157.33	107.02	107.02	2.00	2.00	0.00	
3,100.00	23.00	34.23	3,069.36	188.30	128.09	128.09	2.00	2.00	0.00	
3,123.76	23.48	34.23	3,091.20	196.05	133.37	133.37	2.00	2.00	0.00	
Start 3911.29 hold at 3123.76 MD										
3,134.77	23.70	34.23	3,101.28	199.69	135.84	135.84	2.00	2.00	0.00	
3,200.00	23.70	34.23	3,161.02	221.37	150.59	150.59	0.00	0.00	0.00	
3,300.00	23.70	34.23	3,252.59	254.59	173.19	173.19	0.00	0.00	0.00	
3,400.00	23.70	34.23	3,344.15	287.82	195.79	195.79	0.00	0.00	0.00	
3,500.00	23.70	34.23	3,435.72	321.05	218.40	218.40	0.00	0.00	0.00	
3,600.00	23.70	34.23	3,527.29	354.28	241.00	241.00	0.00	0.00	0.00	
3,700.00	23.70	34.23	3,618.86	387.51	263.61	263.61	0.00	0.00	0.00	
3,800.00	23.70	34.23	3,710.43	420.73	286.21	286.21	0.00	0.00	0.00	
3,900.00	23.70	34.23	3,802.00	453.96	308.81	308.81	0.00	0.00	0.00	
4,000.00	23.70	34.23	3,893.57	487.19	331.42	331.42	0.00	0.00	0.00	
4,100.00	23.70	34.23	3,985.14	520.42	354.02	354.02	0.00	0.00	0.00	
4,200.00	23.70	34.23	4,076.71	553.65	376.62	376.62	0.00	0.00	0.00	
4,300.00	23.70	34.23	4,168.28	586.87	399.23	399.23	0.00	0.00	0.00	
4,400.00	23.70	34.23	4,259.85	620.10	421.83	421.83	0.00	0.00	0.00	
4,500.00	23.70	34.23	4,351.42	653.33	444.44	444.44	0.00	0.00	0.00	
4,600.00	23.70	34.23	4,442.99	686.56	467.04	467.04	0.00	0.00	0.00	
4,700.00	23.70	34.23	4,534.56	719.79	489.64	489.64	0.00	0.00	0.00	
4,800.00	23.70	34.23	4,626.13	753.01	512.25	512.25	0.00	0.00	0.00	
4,900.00	23.70	34.23	4,717.70	786.24	534.85	534.85	0.00	0.00	0.00	
5,000.00	23.70	34.23	4,809.27	819.47	557.46	557.46	0.00	0.00	0.00	
5,100.00	23.70	34.23	4,900.84	852.70	580.06	580.06	0.00	0.00	0.00	
5,200.00	23.70	34.23	4,992.41	885.93	602.66	602.66	0.00	0.00	0.00	
5,300.00	23.70	34.23	5,083.98	919.15	625.27	625.27	0.00	0.00	0.00	
5,400.00	23.70	34.23	5,175.54	952.38	647.87	647.87	0.00	0.00	0.00	
5,500.00	23.70	34.23	5,267.11	985.61	670.47	670.47	0.00	0.00	0.00	
5,600.00	23.70	34.23	5,358.68	1,018.84	693.08	693.08	0.00	0.00	0.00	
5,700.00	23.70	34.23	5,450.25	1,052.07	715.68	715.68	0.00	0.00	0.00	
5,800.00	23.70	34.23	5,541.82	1,085.29	738.29	738.29	0.00	0.00	0.00	
5,900.00	23.70	34.23	5,633.39	1,118.52	760.89	760.89	0.00	0.00	0.00	
6,000.00	23.70	34.23	5,724.96	1,151.75	783.49	783.49	0.00	0.00	0.00	
6,100.00	23.70	34.23	5,816.53	1,184.98	806.10	806.10	0.00	0.00	0.00	
6,200.00	23.70	34.23	5,908.10	1,218.21	828.70	828.70	0.00	0.00	0.00	

Company:	Synergy Resources Corporation	Local Co-ordinate Reference:	Well HOOD 25C-22-M
Project:	SEC 20-T6N-R66W	TVD Reference:	GL 4734 & 25' KB GL 4734 & 25' KB @ 4759.00ft (ASSUMED)
Site:	HOOD-DOLES 37-20 PAD	MD Reference:	GL 4734 & 25' KB GL 4734 & 25' KB @ 4759.00ft (ASSUMED)
Well:	HOOD 25C-22-M	North Reference:	True
Wellbore:	OH	Survey Calculation Method:	Minimum Curvature
Design:	PLAN #2	Database:	EDM 5000.14 Single User Db

Planned Survey										
Measured Depth (ft)	Inclination (°)	Azimuth (°)	Vertical Depth (ft)	+N/-S (ft)	+E/-W (ft)	Vertical Section (ft)	Dogleg Rate (°/100ft)	Build Rate (°/100ft)	Turn Rate (°/100ft)	
6,300.00	23.70	34.23	5,999.67	1,251.43	851.30	851.30	0.00	0.00	0.00	
6,400.00	23.70	34.23	6,091.24	1,284.66	873.91	873.91	0.00	0.00	0.00	
6,500.00	23.70	34.23	6,182.81	1,317.89	896.51	896.51	0.00	0.00	0.00	
6,600.00	23.70	34.23	6,274.38	1,351.12	919.12	919.12	0.00	0.00	0.00	
6,700.00	23.70	34.23	6,365.95	1,384.35	941.72	941.72	0.00	0.00	0.00	
6,800.00	23.70	34.23	6,457.52	1,417.57	964.32	964.32	0.00	0.00	0.00	
6,900.00	23.70	34.23	6,549.09	1,450.80	986.93	986.93	0.00	0.00	0.00	
7,000.00	23.70	34.23	6,640.66	1,484.03	1,009.53	1,009.53	0.00	0.00	0.00	
7,035.05	23.70	34.23	6,672.76	1,495.68	1,017.45	1,017.45	0.00	0.00	0.00	
Start DLS 9.00 TFO 57.81										
7,041.90	23.70	34.23	6,679.02	1,497.95	1,019.00	1,019.00	0.00	0.00	0.00	
7,100.00	26.79	44.14	6,731.59	1,517.01	1,034.70	1,034.70	9.00	5.32	17.06	
7,200.00	33.30	56.63	6,818.19	1,548.35	1,073.40	1,073.40	9.00	6.51	12.49	
7,300.00	40.68	65.23	6,898.06	1,577.17	1,126.03	1,126.03	9.00	7.38	8.60	
7,400.00	48.53	71.52	6,969.23	1,602.75	1,191.29	1,191.29	9.00	7.85	6.29	
7,500.00	56.65	76.43	7,029.95	1,624.48	1,267.59	1,267.59	9.00	8.12	4.90	
7,600.00	64.93	80.48	7,078.73	1,641.80	1,353.03	1,353.03	9.00	8.28	4.06	
7,700.00	73.30	84.02	7,114.36	1,654.31	1,445.52	1,445.52	9.00	8.37	3.54	
7,800.00	81.73	87.26	7,135.96	1,661.69	1,542.77	1,542.77	9.00	8.43	3.24	
7,886.20	89.02	89.93	7,142.91	1,663.78	1,628.60	1,628.60	9.00	8.45	3.10	
LP(2364 FSL 518 FWL)Start 7391.78 hold at 7886.20 MD										
7,893.71	89.65	90.16	7,143.00	1,663.78	1,636.11	1,636.11	9.00	8.46	3.08	
7,900.00	89.65	90.16	7,143.04	1,663.76	1,642.40	1,642.40	0.00	0.00	0.00	
8,000.00	89.65	90.16	7,143.64	1,663.48	1,742.39	1,742.39	0.00	0.00	0.00	
8,100.00	89.65	90.16	7,144.25	1,663.19	1,842.39	1,842.39	0.00	0.00	0.00	
8,200.00	89.65	90.16	7,144.86	1,662.91	1,942.39	1,942.39	0.00	0.00	0.00	
8,300.00	89.65	90.16	7,145.47	1,662.63	2,042.39	2,042.39	0.00	0.00	0.00	
8,400.00	89.65	90.16	7,146.08	1,662.34	2,142.39	2,142.39	0.00	0.00	0.00	
8,500.00	89.65	90.16	7,146.69	1,662.06	2,242.38	2,242.38	0.00	0.00	0.00	
8,600.00	89.65	90.16	7,147.30	1,661.78	2,342.38	2,342.38	0.00	0.00	0.00	
8,700.00	89.65	90.16	7,147.91	1,661.49	2,442.38	2,442.38	0.00	0.00	0.00	
8,800.00	89.65	90.16	7,148.51	1,661.21	2,542.38	2,542.38	0.00	0.00	0.00	
8,900.00	89.65	90.16	7,149.12	1,660.93	2,642.37	2,642.37	0.00	0.00	0.00	
9,000.00	89.65	90.16	7,149.73	1,660.64	2,742.37	2,742.37	0.00	0.00	0.00	
9,100.00	89.65	90.16	7,150.34	1,660.36	2,842.37	2,842.37	0.00	0.00	0.00	
9,200.00	89.65	90.16	7,150.95	1,660.08	2,942.37	2,942.37	0.00	0.00	0.00	
9,300.00	89.65	90.16	7,151.56	1,659.79	3,042.36	3,042.36	0.00	0.00	0.00	
9,400.00	89.65	90.16	7,152.17	1,659.51	3,142.36	3,142.36	0.00	0.00	0.00	
9,500.00	89.65	90.16	7,152.78	1,659.23	3,242.36	3,242.36	0.00	0.00	0.00	
9,600.00	89.65	90.16	7,153.39	1,658.94	3,342.36	3,342.36	0.00	0.00	0.00	
9,700.00	89.65	90.16	7,153.99	1,658.66	3,442.36	3,442.36	0.00	0.00	0.00	
9,800.00	89.65	90.16	7,154.60	1,658.38	3,542.35	3,542.35	0.00	0.00	0.00	

Company:	Synergy Resources Corporation	Local Co-ordinate Reference:	Well HOOD 25C-22-M
Project:	SEC 20-T6N-R66W	TVD Reference:	GL 4734 & 25' KB GL 4734 & 25' KB @ 4759.00ft (ASSUMED)
Site:	HOOD-DOLES 37-20 PAD	MD Reference:	GL 4734 & 25' KB GL 4734 & 25' KB @ 4759.00ft (ASSUMED)
Well:	HOOD 25C-22-M	North Reference:	True
Wellbore:	OH	Survey Calculation Method:	Minimum Curvature
Design:	PLAN #2	Database:	EDM 5000.14 Single User Db

Planned Survey										
Measured Depth (ft)	Inclination (°)	Azimuth (°)	Vertical Depth (ft)	+N/-S (ft)	+E/-W (ft)	Vertical Section (ft)	Dogleg Rate (°/100ft)	Build Rate (°/100ft)	Turn Rate (°/100ft)	
9,900.00	89.65	90.16	7,155.21	1,658.10	3,642.35	3,642.35	0.00	0.00	0.00	
10,000.00	89.65	90.16	7,155.82	1,657.81	3,742.35	3,742.35	0.00	0.00	0.00	
10,100.00	89.65	90.16	7,156.43	1,657.53	3,842.35	3,842.35	0.00	0.00	0.00	
10,200.00	89.65	90.16	7,157.04	1,657.25	3,942.34	3,942.34	0.00	0.00	0.00	
10,300.00	89.65	90.16	7,157.65	1,656.96	4,042.34	4,042.34	0.00	0.00	0.00	
10,400.00	89.65	90.16	7,158.26	1,656.68	4,142.34	4,142.34	0.00	0.00	0.00	
10,500.00	89.65	90.16	7,158.87	1,656.40	4,242.34	4,242.34	0.00	0.00	0.00	
10,600.00	89.65	90.16	7,159.47	1,656.11	4,342.34	4,342.34	0.00	0.00	0.00	
10,700.00	89.65	90.16	7,160.08	1,655.83	4,442.33	4,442.33	0.00	0.00	0.00	
10,800.00	89.65	90.16	7,160.69	1,655.55	4,542.33	4,542.33	0.00	0.00	0.00	
10,900.00	89.65	90.16	7,161.30	1,655.26	4,642.33	4,642.33	0.00	0.00	0.00	
11,000.00	89.65	90.16	7,161.91	1,654.98	4,742.33	4,742.33	0.00	0.00	0.00	
11,100.00	89.65	90.16	7,162.52	1,654.70	4,842.32	4,842.32	0.00	0.00	0.00	
11,200.00	89.65	90.16	7,163.13	1,654.41	4,942.32	4,942.32	0.00	0.00	0.00	
11,300.00	89.65	90.16	7,163.74	1,654.13	5,042.32	5,042.32	0.00	0.00	0.00	
11,400.00	89.65	90.16	7,164.35	1,653.85	5,142.32	5,142.32	0.00	0.00	0.00	
11,500.00	89.65	90.16	7,164.95	1,653.56	5,242.32	5,242.32	0.00	0.00	0.00	
11,600.00	89.65	90.16	7,165.56	1,653.28	5,342.31	5,342.31	0.00	0.00	0.00	
11,700.00	89.65	90.16	7,166.17	1,653.00	5,442.31	5,442.31	0.00	0.00	0.00	
11,800.00	89.65	90.16	7,166.78	1,652.72	5,542.31	5,542.31	0.00	0.00	0.00	
11,900.00	89.65	90.16	7,167.39	1,652.43	5,642.31	5,642.31	0.00	0.00	0.00	
12,000.00	89.65	90.16	7,168.00	1,652.15	5,742.30	5,742.30	0.00	0.00	0.00	
12,100.00	89.65	90.16	7,168.61	1,651.87	5,842.30	5,842.30	0.00	0.00	0.00	
12,200.00	89.65	90.16	7,169.22	1,651.58	5,942.30	5,942.30	0.00	0.00	0.00	
12,300.00	89.65	90.16	7,169.83	1,651.30	6,042.30	6,042.30	0.00	0.00	0.00	
12,400.00	89.65	90.16	7,170.43	1,651.02	6,142.30	6,142.30	0.00	0.00	0.00	
12,500.00	89.65	90.16	7,171.04	1,650.73	6,242.29	6,242.29	0.00	0.00	0.00	
12,600.00	89.65	90.16	7,171.65	1,650.45	6,342.29	6,342.29	0.00	0.00	0.00	
12,700.00	89.65	90.16	7,172.26	1,650.17	6,442.29	6,442.29	0.00	0.00	0.00	
12,800.00	89.65	90.16	7,172.87	1,649.88	6,542.29	6,542.29	0.00	0.00	0.00	
12,900.00	89.65	90.16	7,173.48	1,649.60	6,642.28	6,642.28	0.00	0.00	0.00	
13,000.00	89.65	90.16	7,174.09	1,649.32	6,742.28	6,742.28	0.00	0.00	0.00	
13,100.00	89.65	90.16	7,174.70	1,649.03	6,842.28	6,842.28	0.00	0.00	0.00	
13,200.00	89.65	90.16	7,175.31	1,648.75	6,942.28	6,942.28	0.00	0.00	0.00	
13,300.00	89.65	90.16	7,175.91	1,648.47	7,042.27	7,042.27	0.00	0.00	0.00	
13,400.00	89.65	90.16	7,176.52	1,648.18	7,142.27	7,142.27	0.00	0.00	0.00	
13,500.00	89.65	90.16	7,177.13	1,647.90	7,242.27	7,242.27	0.00	0.00	0.00	
13,600.00	89.65	90.16	7,177.74	1,647.62	7,342.27	7,342.27	0.00	0.00	0.00	
13,700.00	89.65	90.16	7,178.35	1,647.33	7,442.27	7,442.27	0.00	0.00	0.00	
13,800.00	89.65	90.16	7,178.96	1,647.05	7,542.26	7,542.26	0.00	0.00	0.00	
13,900.00	89.65	90.16	7,179.57	1,646.77	7,642.26	7,642.26	0.00	0.00	0.00	
14,000.00	89.65	90.16	7,180.18	1,646.49	7,742.26	7,742.26	0.00	0.00	0.00	

Company:	Synergy Resources Corporation	Local Co-ordinate Reference:	Well HOOD 25C-22-M
Project:	SEC 20-T6N-R66W	TVD Reference:	GL 4734 & 25' KB GL 4734 & 25' KB @ 4759.00ft (ASSUMED)
Site:	HOOD-DOLES 37-20 PAD	MD Reference:	GL 4734 & 25' KB GL 4734 & 25' KB @ 4759.00ft (ASSUMED)
Well:	HOOD 25C-22-M	North Reference:	True
Wellbore:	OH	Survey Calculation Method:	Minimum Curvature
Design:	PLAN #2	Database:	EDM 5000.14 Single User Db

Planned Survey										
Measured Depth (ft)	Inclination (°)	Azimuth (°)	Vertical Depth (ft)	+N/-S (ft)	+E/-W (ft)	Vertical Section (ft)	Dogleg Rate (°/100ft)	Build Rate (°/100ft)	Turn Rate (°/100ft)	
14,100.00	89.65	90.16	7,180.79	1,646.20	7,842.26	7,842.26	0.00	0.00	0.00	
14,200.00	89.65	90.16	7,181.39	1,645.92	7,942.25	7,942.25	0.00	0.00	0.00	
14,300.00	89.65	90.16	7,182.00	1,645.64	8,042.25	8,042.25	0.00	0.00	0.00	
14,400.00	89.65	90.16	7,182.61	1,645.35	8,142.25	8,142.25	0.00	0.00	0.00	
14,500.00	89.65	90.16	7,183.22	1,645.07	8,242.25	8,242.25	0.00	0.00	0.00	
14,600.00	89.65	90.16	7,183.83	1,644.79	8,342.25	8,342.25	0.00	0.00	0.00	
14,700.00	89.65	90.16	7,184.44	1,644.50	8,442.24	8,442.24	0.00	0.00	0.00	
14,800.00	89.65	90.16	7,185.05	1,644.22	8,542.24	8,542.24	0.00	0.00	0.00	
14,900.00	89.65	90.16	7,185.66	1,643.94	8,642.24	8,642.24	0.00	0.00	0.00	
15,000.00	89.65	90.16	7,186.27	1,643.65	8,742.24	8,742.24	0.00	0.00	0.00	
15,100.00	89.65	90.16	7,186.87	1,643.37	8,842.23	8,842.23	0.00	0.00	0.00	
15,200.00	89.65	90.16	7,187.48	1,643.09	8,942.23	8,942.23	0.00	0.00	0.00	
15,277.98	89.65	90.16	7,187.96	1,642.87	9,020.21	9,020.21	0.00	0.00	0.00	
TD at 15277.98										
15,284.89	89.65	90.16	7,188.00	1,642.85	9,027.12	9,027.12	0.00	0.00	0.00	

Design Targets										
Target Name	Dip Angle (°)	Dip Dir. (°)	TVD (ft)	+N/-S (ft)	+E/-W (ft)	Northing (ft)	Easting (ft)	Latitude	Longitude	
TOP_HOOD 25C-22-M(0.00	0.00	7,143.00	1,611.05	1,194.36	1,415,882.39	3,196,941.62	40.4728332	-104.7921300	
- hit/miss target										
- Shape										
- plan misses target center by 135.36ft at 7500.00ft MD (7029.95 TVD, 1624.48 N, 1267.59 E)										
- Point										
PBHL_HOOD 25C-22-M	0.00	0.00	7,188.00	1,642.85	9,027.12	1,415,976.33	3,204,773.88	40.4729160	-104.7639760	
- plan hits target center										
- Point										

Casing Points					
Measured Depth (ft)	Vertical Depth (ft)	Name	Casing Diameter (in)	Hole Diameter (in)	
1,750.00	1,750.00	9 5/8"	9.625	13.500	

Plan Annotations					
Measured Depth (ft)	Vertical Depth (ft)	Local Coordinates		Comment	
		+N/-S (ft)	+E/-W (ft)		
1950	1950	0	0	Start DLS 2.00 TFO 34.59	
3124	3091	196	133	Start 3911.29 hold at 3123.76 MD	
7035	6673	1496	1017	Start DLS 9.00 TFO 57.81	
7886	7143	1664	1629	LP(2364 FSL 518 FWL)Start 7391.78 hold at 7886.20 MD	
15,278	7188	1643	9020	TD at 15277.98	

Company:	Synergy Resources Corporation	Local Co-ordinate Reference:	Well HOOD 25C-22-M
Project:	SEC 20-T6N-R66W	TVD Reference:	GL 4734 & 25' KB GL 4734 & 25' KB @ 4759.00ft (ASSUMED)
Site:	HOOD-DOLES 37-20 PAD	MD Reference:	GL 4734 & 25' KB GL 4734 & 25' KB @ 4759.00ft (ASSUMED)
Well:	HOOD 25C-22-M	North Reference:	True
Wellbore:	OH	Survey Calculation Method:	Minimum Curvature
Design:	PLAN #2	Database:	EDM 5000.14 Single User Db

Checked By: _____	Approved By: _____	Date: _____
-------------------	--------------------	-------------