

LEGEND:

└─ = 90° SYMBOL

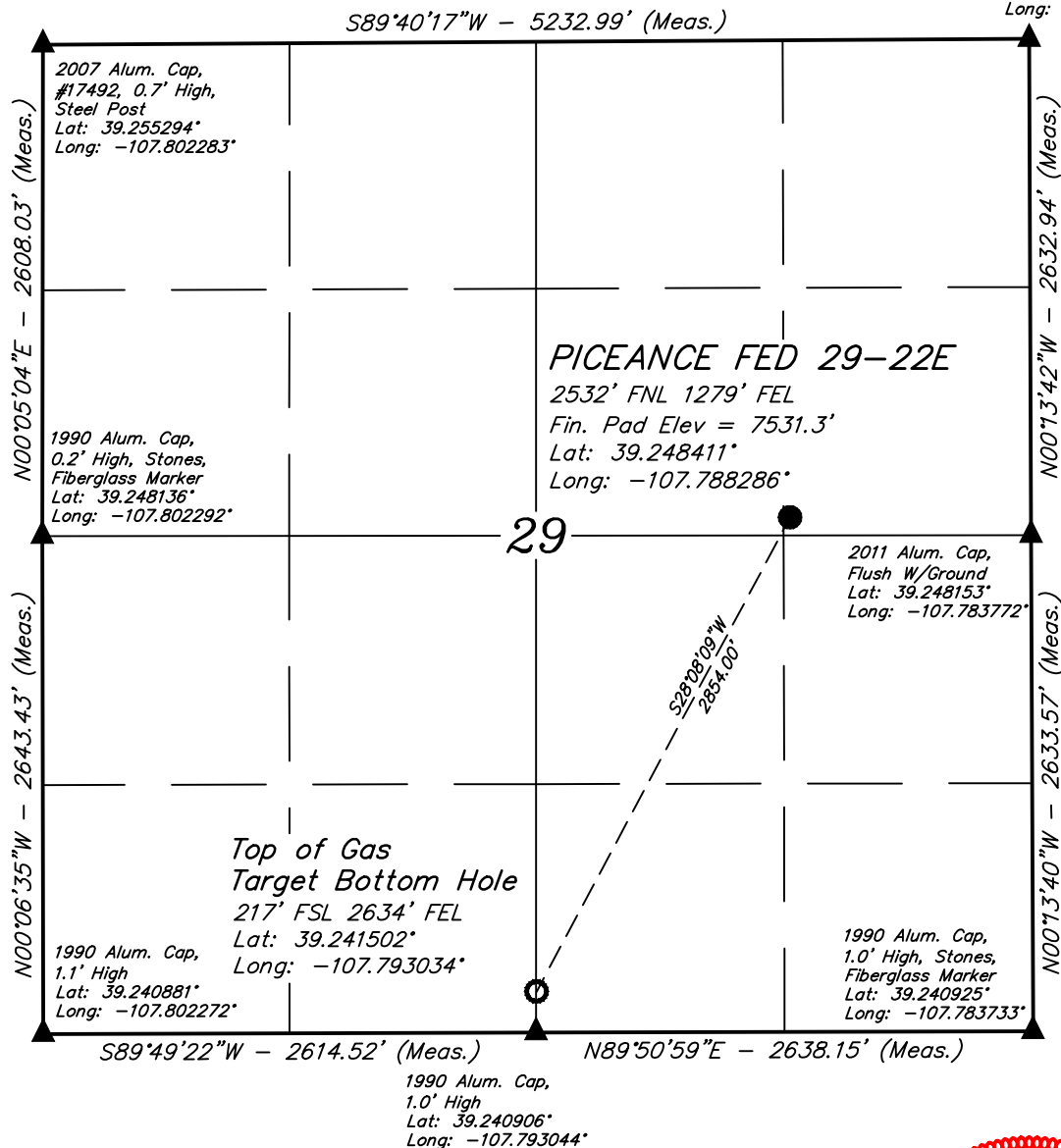
● = PROPOSED WELLHEAD.

○ = TARGET BOTTOM HOLE.

▲ = SECTION CORNERS LOCATED.

T9S, R93W, 6th P.M.

Set Marked Stone,
E-W Fenceline
Lat: 39.255381°
Long: -107.783811°

**NOTE DISTANCE TO NEAREST:**

BUILDING: N04°E 1229'

BUILDING UNIT: OVER A MILE

HOB: OVER A MILE

DOAA: OVER A MILE

PUBLIC ROAD: OVER A MILE

ABOVE GROUND UTILITY: EAST 499'

RAILROAD: OVER A MILE

PROPERTY LINE: EAST 1279'

NOTE:

- 1.) All latitudes and longitudes are given in NAD 83 coordinates.
- 2.) Distances to nearest section lines are measured perpendicularly.

CERTIFICATE
THIS IS TO CERTIFY THAT THE ABOVE PLAT WAS PREPARED FROM FIELD NOTES OF ACTUAL SURVEYS MADE BY ME OR UNDER MY SUPERVISION AND THAT THE LOCATION HAS BEEN STAKED ON THE GROUND AS SHOWN ON THE PLAT AND THAT THE SAME ARE TRUE AND CORRECT TO THE BEST OF MY KNOWLEDGE AND BELIEF.

REGISTERED LAND SURVEYOR
REGISTRATION NO. 19130
STATE OF COLORADO 01-15-17

PDOP = 1.2



REV: 04 01-12-17 S.S. (BHL CHANGE)

BASIS OF BEARINGS

BASIS OF BEARINGS IS A G.P.S. OBSERVATION

BASIS OF ELEVATION

BENCH MARK (19 RDS) LOCATED IN THE SE 1/4 OF SECTION 16, T9S, R93W, 6th P.M., TAKEN FROM THE SOUTH MAMM PEAK, QUADRANGLE, COLORADO, 7.5 MINUTE QUAD. (TOPOGRAPHIC MAP) PUBLISHED BY THE UNITED STATES DEPARTMENT OF THE INTERIOR, GEOLOGICAL SURVEY. SAID ELEVATION IS MARKED AS BEING 7252 FEET.

LARAMIE ENERGY, LLC

PICEANCE FED 29-22E
SE 1/4 NE 1/4, SECTION 29, T9S, R93W, 6th P.M.
MESA COUNTY, COLORADO

SURVEYED BY: GLEN MCELROY, N.F.	DATE: 04-22-15
DRAWN BY: S.S.	DATE DRAWN: 10-04-16
SCALE: 1" = 1000'	

WELL LOCATION PLAT

UELS, LLC
Corporate Office * 85 South 200 East
Vernal, UT 84078 * (435) 789-1017

