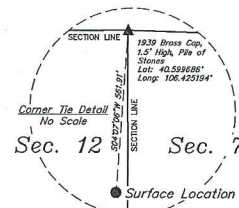


LEGEND:

-  - 90° SYMBOL
-  - PROPOSED WELLHEAD.
-  - TOP OF NIOBRARA.
-  - LANDING POINT.
-  - TARGET BOTTOM HOLE.
-  - SECTION CORNERS LOCATED. (NAD 83)
-  - SECTION CORNERS RE-ESTABLISHED. (Not Set on Ground.) (NAD 83)



BASIS OF BEARINGS
BASIS OF BEARINGS IS A G.P.S. OBSERVATION

BASIS OF ELEVATION
SPOT ELEVATION AT THE SOUTHEAST CORNER OF SECTION
29, T7N, R80W, 6th P.M., TAKEN FROM THE COALMONT
QUADRANGLE, COLORADO, JACKSON COUNTY 7.5 MINUTE
QUAD. (TOPOGRAPHIC MAP) PUBLISHED BY THE UNITED
STATES DEPARTMENT OF THE INTERIOR, GEOLOGICAL SURVEY.
SAID ELEVATION IS MARKED AS BEING 8156 FEET.

PDOP = 1.3

NAD 83 SURFACE LOCATION
LATITUDE = 49°53'31" (60.5614)
LONGITUDE = 10°59'51" (106.4533)
NAD 83 SURFACE LOCATION
LATITUDE = 49°53'51" (60.5619)
LONGITUDE = 10°59'51" (106.4533)
STATE PLANE NAD 83 (CO. NORTH)
N 462087.61 E 7.249430 N
NAD 83 SURFACE LOCATION
LATITUDE = 49°53'51" (60.5619)
LONGITUDE = 10°59'51" (106.4533)

NAD 83 TOP OF MIDDLE
LATITUDE = 49°53'31" (60.5614)
LONGITUDE = 10°59'48.67" (106.45058)
NAD 83 TOP OF MIDDLE
LATITUDE = 49°53'51" (60.5619)
LONGITUDE = 10°59'48.67" (106.45058)
STATE PLANE NAD 83 (CO. NORTH)
N 462087.61 E 7.249430 N
STATE PLANE NAD 83 (CO. NORTH)
N 462087.61 E 7.249430 N

NAD 83 GLANDING POINT
LATITUDE = 49°35'59.69" (60.59964)
LONGITUDE = 10°59'48.67" (106.45058)
NAD 83 GLANDING POINT
LATITUDE = 49°35'59.71" (60.59965)
LONGITUDE = 10°59'48.67" (106.45058)
STATE PLANE NAD 83 (CO. NORTH)
N 462087.61 E 7.249430 N
STATE PLANE NAD 83 (CO. NORTH)
N 462087.61 E 7.249430 N

NAD 83 (ARGET BOT TOM HOLE)
LATITUDE = 49°74'48" (60.669125)
LONGITUDE = 10°59'48.67" (106.45058)
NAD 83 (ARGET BOT TOM HOLE)
LATITUDE = 49°74'48" (60.669125)
LONGITUDE = 10°59'48.67" (106.45058)
STATE PLANE NAD 83 (CO. NORTH)
N 462087.61 E 7.249430 N
STATE PLANE NAD 83 (CO. NORTH)
N 462087.61 E 7.249430 N

CERTIFICATE

THIS IS TO CERTIFY THAT THE ABOVE PLAN WAS PREPARED FROM FIELD NOTES OF ACTUAL SURVEYS MADE BY ME OR UNDER MY SUPERVISION, AND THAT THE SAME ARE TRUE AND CORRECT TO THE BEST OF MY KNOWLEDGE AND BELIEF.

REV: 3 01-13-17 M.D. (LANDING POINT CHANGE)

SandRidge Exploration & Production, LLC

GRIZZLY 0881 4-1H36
NE 1/4 NE 1/4, SECTION 12, T7N, R81W, 6th P.M.
JACKSON COUNTY, COLORADO



UELS, LLC
 Corporate Office • 85 South 200 East
 Vernal, UT 84078 • (435) 789-1017

SURVEYED BY	CHAD MEIERS, D.S.	09-01-16	SCALE
DRAWN BY	T.B.	09-08-16	1" = 100'

WELL LOCATION PLAT