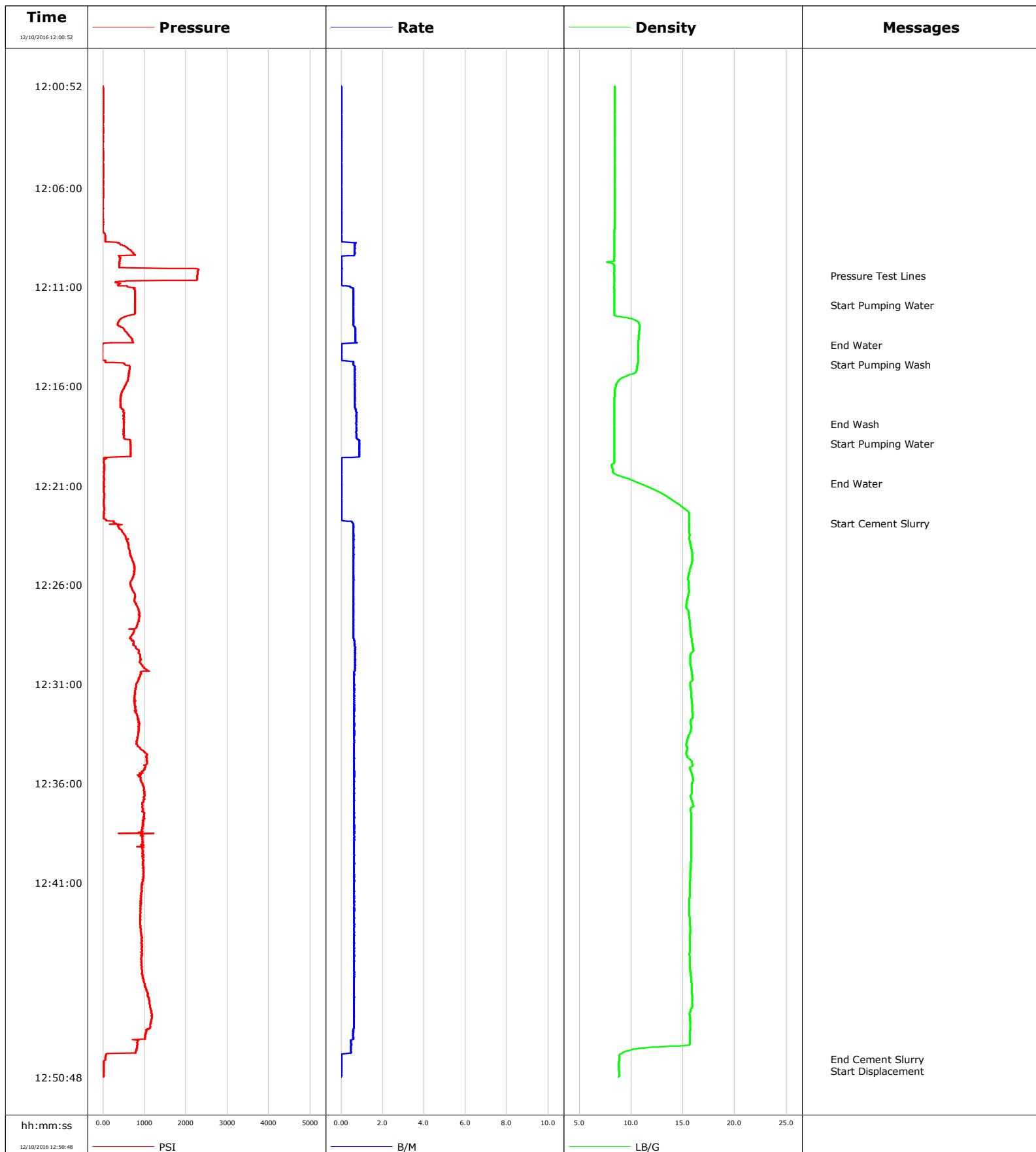


Well Markham 1
Field DJ
Engineer Richard White
Country United States

Client Anadarko
SIR No.
Job Type Plug Abandon
Job Date 12-10-2016



				Customer Anadarko			Job Number						
Well Markham 1			Location (legal)			Schlumberger Location Cheyenne			Job Start Dec/10/2016				
Field DJ		Formation Name/Type			Deviation deg		Bit Size in		Well MD ft		Well TVD ft		
County Weld		State/Province Colorado			BHP psi		BHST degF		BHCT degF		Pore Press. Gradient lb/gal		
Well Master 0631404243		API/UWI 5.12E+08											
Rig Name Key 1		Drilled For Oil & Gas		Service Via Land		Casing/ Liner							
						Depth, ft		Size, in		Weight, lb/ft		Grade	
Offshore Zone		Well Class Old		Well Type Other									
Drilling Fluid Type		Max. Density lb/gal		Plastic Viscosity cP		Tubing/Drill Pipe							
						T/D		Depth, ft		Size, in		Weight, lb/ft	
Service Line Cementing		Job Type Plug & Abandon											
Max. Allowed Tub. Press psi		Max. Allowed Ann. Press psi		WH Connection		Perforations/Open Hole							
						Top, ft		Bottom, ft		shot/ft		No. of Shots	
						ft		ft				Total Interval ft	
						ft		ft				Diameter in	
						ft		ft					
						Treat Down		Displacement bbl		Packer Type		Packer Depth ft	
						Tubing Vol. bbl		Casing Vol. bbl		Annular Vol. bbl		Openhole Vol. bbl	
Casing/Tubing Secured <input type="checkbox"/>		1 Hole Vol. Circulated prior to Cement <input type="checkbox"/>				Casing Tools				Squeeze Job			
Lift Pressure psi						Shoe Type				Squeeze Type			
Pipe Rotated <input type="checkbox"/>		Pipe Reciprocated <input type="checkbox"/>				Shoe Depth ft				Tool Type			
No. Centralizers		Top Plugs		Bottom Plugs		Stage Tool Type				Tool Depth ft			
Cement Head Type						Stage Tool Depth ft				Tail Pipe Size in			
Job Scheduled For Dec/10/2016		Arrived on Location Dec/10/2016		Leave Location Dec/10/2016		Collar Type				Tail Pipe Depth ft			
						Collar Depth ft				Sqz. Total Vol. bbl			
Date	Time 24-hr clock	Treating Pressure PSI	Flow Rate B/M	Density LB/G	Volume NULL	Message							
12/10/2016	12:00:52	4	0.0	8.40	9	Started Acquisition							
12/10/2016	12:02:52	4	0.0	8.40	9								
12/10/2016	12:04:52	4	0.0	8.40	9								
12/10/2016	12:06:52	-1	0.0	8.41	9								
12/10/2016	12:08:52	429	0.7	8.38	5								
12/10/2016	12:10:26	2270	0.0	8.36	5	Pressure Test Lines							
12/10/2016	12:10:52	402	0.0	8.35	5								
12/10/2016	12:11:54	773	0.6	8.38	5	Start Pumping Water							
12/10/2016	12:12:52	356	0.6	10.77	5								
12/10/2016	12:13:54	-15	0.0	10.66	9	End Water							
12/10/2016	12:14:52	512	0.6	10.63	5								
12/10/2016	12:14:54	530	0.6	10.62	5	Start Pumping Wash							
12/10/2016	12:16:52	420	0.7	8.39	5								
12/10/2016	12:17:54	503	0.7	8.38	5	End Wash							
12/10/2016	12:18:52	663	0.9	8.38	5								
12/10/2016	12:18:54	654	0.9	8.38	5	Start Pumping Water							
12/10/2016	12:20:52	22	0.0	10.71	9								
12/10/2016	12:20:54	22	0.0	10.85	9	End Water							
12/10/2016	12:22:54	292	0.6	15.61	5	Start Cement Slurry							
12/10/2016	12:24:52	722	0.6	15.87	5								
12/10/2016	12:26:52	759	0.6	15.36	5								

Well			Field		Job Start	Customer		Job Number
Markham 1			DJ		Dec/10/2016	Anadarko		
Date	Time 24-hr clock	Treating Pressure PSI	Flow Rate B/M	Density LB/G	Volume NULL	Message		
12/10/2016	12:30:52	832	0.6	15.81	5			
12/10/2016	12:32:52	851	0.6	15.73	5			
12/10/2016	12:34:52	1066	0.6	15.80	5			
12/10/2016	12:36:52	970	0.6	15.84	5			
12/10/2016	12:38:52	960	0.6	15.78	5			
12/10/2016	12:40:52	951	0.6	15.68	5			
12/10/2016	12:42:52	892	0.6	15.66	5			
12/10/2016	12:44:52	924	0.6	15.62	5			
12/10/2016	12:46:52	1107	0.6	15.88	5			
12/10/2016	12:48:52	1011	0.6	15.66	5			
12/10/2016	12:49:54	54	0.0	8.85	9	End Cement Slurry		

Post Job Summary

Average Pump Rates, bbl/min					Volume of Fluid Injected, bbl							
Slurry 0.6	N2	Mud	Maximum Rate 0.9		Total Slurry 22.4	Mud 0.0	Spacer 0.0	N2				
Treating Pressure Summary, psi					Breakdown Fluid							
Maximum 2297	Final 17	Average 645	Bump Plug to	Breakdown	Type	Volume bbl	Density lb/gal					
Avg. N2 Percent %	Designed Slurry Volume 0.0 bbl	Displacement 0.0 bbl	Mix Water Temp degF	Cement Circulated to Surface?		Volume bbl						
				Washed Thru Perfs		To ft						
Customer or Authorized Representative Traux			Schlumberger Supervisor Richard White			Circulation Lost	Job Completed					
						-	-					