

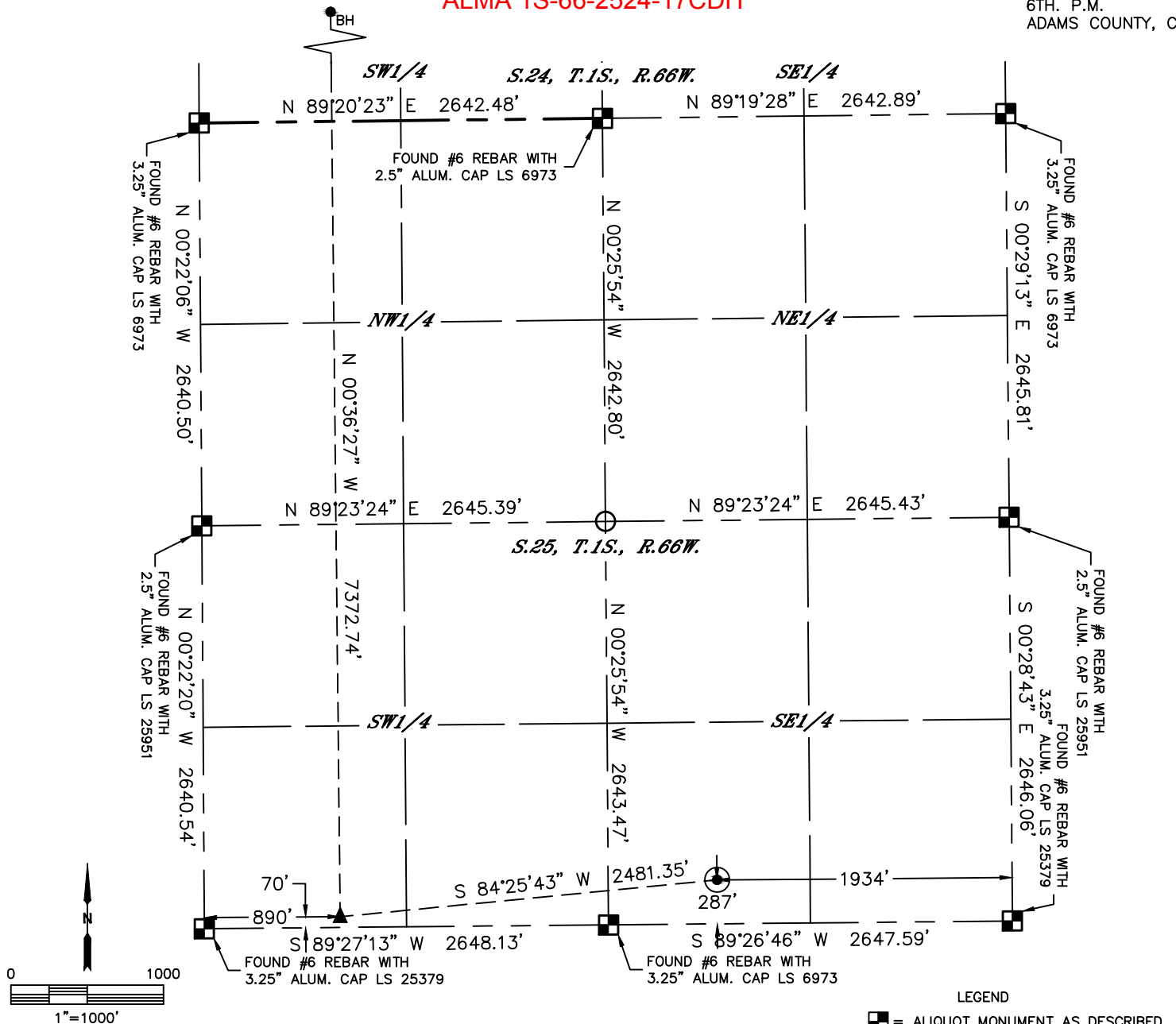


Lat40°, Inc. 6250 W. 10th Street, Unit 2, Greeley, CO 970-515-5294

WELL LOCATION CERTIFICATE

ALMA 1S-66-2524-17CDH

SECTION: 25
TOWNSHIP: 1S
RANGE: 66W
6TH. P.M.
ADAMS COUNTY, CO



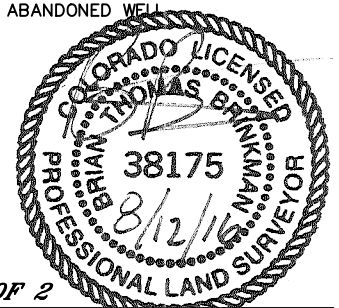
CLIENT: HRM RESOURCES II LLC					LANDMAN: DAN KELLY				
INSTRUMENT OPERATOR: BRIAN ROTTINGHAUS					SURVEY DATE: 7/28/2016			SURFACE USE: CROP LAND	
SHL FOOTAGE		SHL LAT °		SHL LONG °	SHL PDOP	SHL ELEV (FT.)		SHL 1/4/1/4	SHL S-T-R
287	FSL	1934	FEL	39.92964	-104.72148	1.7	5179	SWSE	25-1S-66

BHL FOOTAGE				BHL LAT °	BHL LONG °	BHL S-T-R	EP LAT °	EP LONG °	EP S-T-R
860	FWL	2160	FSL	39.94927	-104.73034	24-1S-66	39.92903	-104.73029	25-1S-66

- NOTE:
- Bearings shown are Grid Bearings of the Colorado State Plane Coordinate System, North Zone, North American Datum 1983. The lineal dimensions as contained herein are based upon the "U.S. Survey Foot."
 - Distances to section lines measured at 90 degrees from said section lines.
 - Ground elevations are based on an observed GPS elevation (NAVD 1988 DATUM).
 - Latitude and Longitude shown are (NAD 83 DATUM).
 - IMPROVEMENTS: See LOCATION DRAWING for all visible improvements within 500' of oil and gas location.
 - This map does not represent a boundary survey.

NEAREST CULTURAL ITEMS	
BUILDING	±1615' NE
BUILDING UNIT	±1615' NE
HIGH OCCUPANCY BUILDING UNIT	5280'+
DESIGNATED OUTSIDE ACTIVITY AREA	5280'+
PUBLIC ROAD (EAST 128TH AVENUE)	±275' S
ABOVE GROUND UTILITY	±250' S
RAILROAD	5280'+
PROPERTY LINE	±247' S

- LEGEND
- = ALIQUOT MONUMENT AS DESCRIBED
 - = CALCULATED POSITION
 - = SURFACE HOLE LOCATION (SHL)
 - ▲ = ENTRY POINT LOCATION (EP)
 - BH = BOTTOM HOLE LOCATION (BHL)
 - ⊕ = EXISTING WELL
 - ⊙ = ABANDONED WELL



SHEET 1 OF 2

Brian T. Brinkman—On behalf of Lat40°, Inc.
Colorado Licensed Professional Land Surveyor No. 38175
DATE: 8/12/2016
PROJECT#: 2016052

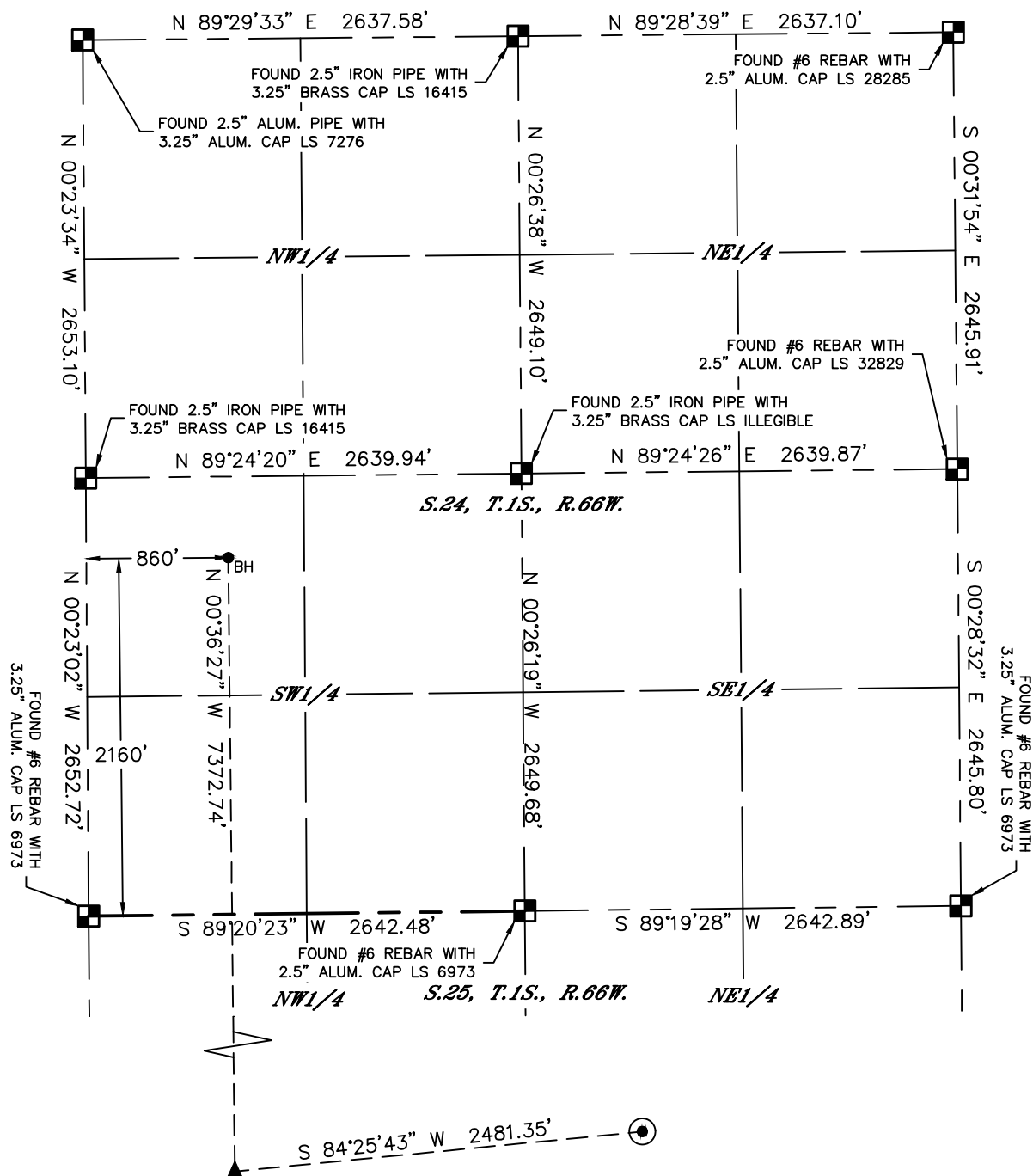


Lat40°, Inc. 6250 W. 10th Street, Unit 2, Greeley, CO 970-515-5294

WELL LOCATION CERTIFICATE

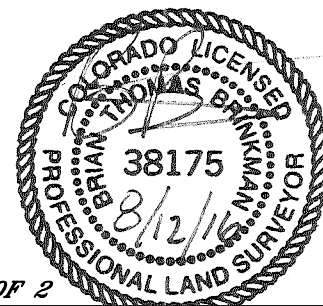
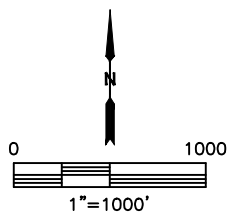
ALMA 1S-66-2524-17CDH

SECTION: 25
TOWNSHIP: 1S
RANGE: 66W
6TH. P.M.
ADAMS COUNTY, CO



LEGEND

- = ALIQUOT MONUMENT AS DESCRIBED
- = CALCULATED POSITION
- ⊙ = SURFACE HOLE LOCATION (SHL)
- ▲ = ENTRY POINT LOCATION (EP)
- = BOTTOM HOLE LOCATION (BHL)
- ⊕ = EXISTING WELL
- ⊙ = ABANDONED WELL



SHEET 2 OF 2

Brian T. Brinkman—On behalf of Lat40°, Inc.
Colorado Licensed Professional Land Surveyor No. 38175
DATE: 8/12/2016
PROJECT#: 2016052