

Reclamation Inspection

01/12/2017

Operator: Whiting

Location ID: 433999

Weld County, CO

NESE Section 27 T10N R58W

Aaron Trujillo

Reclamation Specialist

COGCC



COLORADO

Department of Natural Resources



Figure 1: Photo taken from the south end of the location, facing west. Photo shows interim and production areas.



Figure 2: Photo taken from the south end of the location, facing northwest. Photo shows interim and production areas. Center of image shows 56, 400 bbl tanks on location (28 produced water, 28 crude)



Figure 3: Photo taken from the south end of the location, facing north. Photo shows interim and production areas. Center right of photo shows 8 pump jacks/wells on location, back left shows 4 vertical heater treaters.



Figure 4: Photo taken from the south end of the location, facing northeast. Photo shows interim and production areas.



Figure 5: Photo taken from the south end of the location, facing east. Photo shows interim and production areas.



Figure 6: Photo taken from the southeast corner of the interim area, facing west. Photo shows vegetation over the interim area. One growing season has passed, IR in process however areas of the interim consists of sparse vegetation and/or exposed soil, and may require additional seeding/reclamation work.



Figure 7: Photo taken from the southeast corner of the interim area, facing north. Photo shows vegetation over the interim area. One growing season has passed, IR in process however areas of the interim consists of sparse vegetation and/or exposed soil, and may require additional seeding/reclamation work.



Figure 8: Photo taken from the northeast corner of the interim area, facing west. Photo shows stormwater and sediment control ditch on perimeter of the interim area.



Figure 9: Photo taken from the northeast corner of the interim area, facing south. Photo shows stormwater and sediment control ditch on perimeter of the interim area.



Figure 10: Photo taken from the northeast end of the production area, facing north. Photo shows two field flares.



01.12.2017 10:11

Figure 11: Photo taken from the northeast end of the production area, facing northwest. Photo shows compressor



Figure 12: Photo taken from the north end of the location, facing north. Photo shows 200 bbl condensate tank. Berm in proper functioning condition.



Figure 13: Photo taken from the north end of the location, facing north. Photo shows 4 vertical heater treaters.



Figure 14: Photo taken from the west end of the location, west north. Photo shows 28, 400 bbl crude oil tanks.



Figure 15: Photo taken from the west end of the location, west north. Photo shows 28, 400 bbl produced water tanks.



Figure 16: Photo taken from the southwest end of the location, facing west. Photo shows 6 emission control devices.

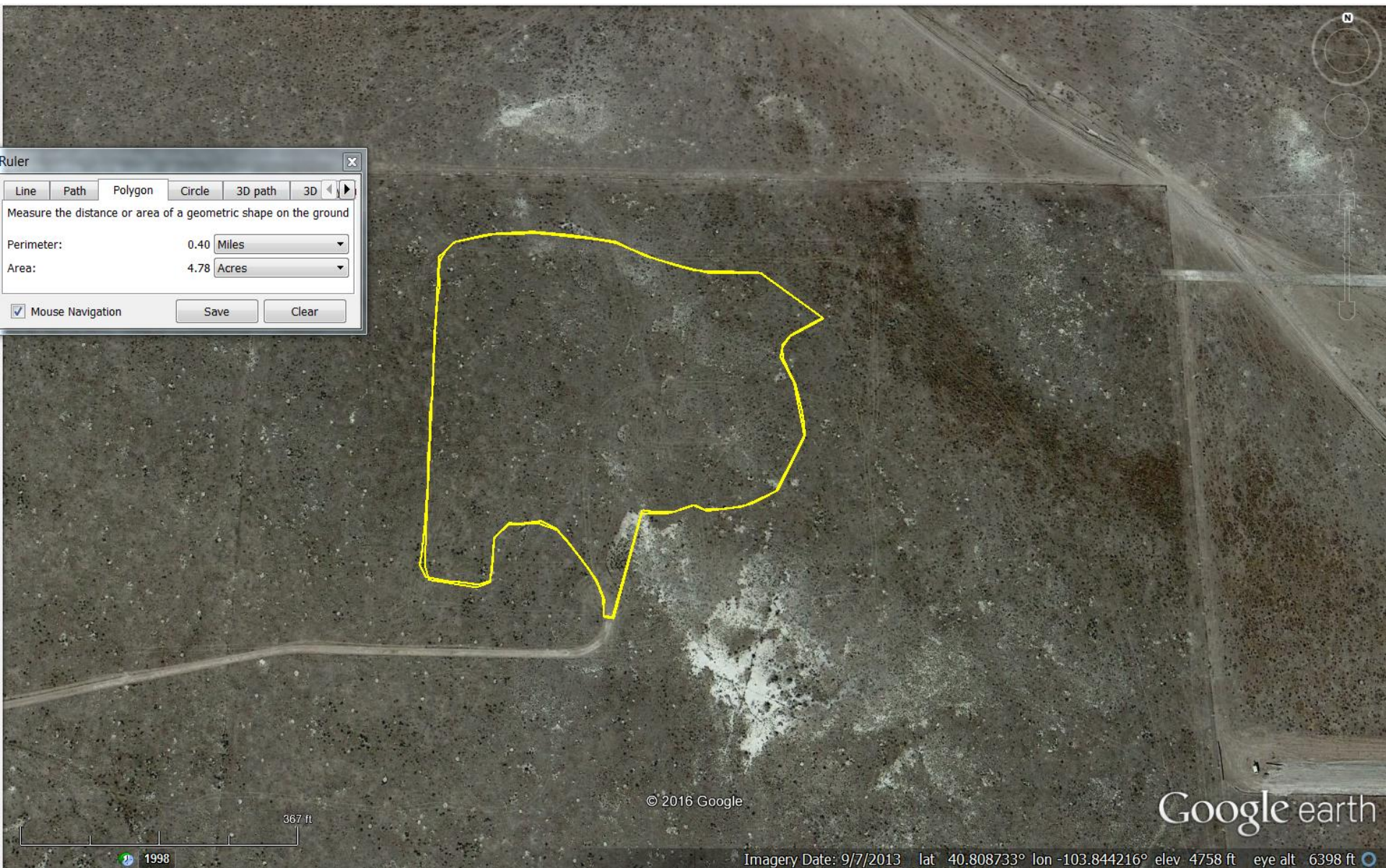


Figure 17: 2013 Google Earth imagery. Yellow polygon represents the current perimeter of the production area (confirmed by GPS on the ground). Current size of production area is 4.78 acres. Approved 2A doc. #400426385 stated production area post interim reclamation would be 3.4 acres.