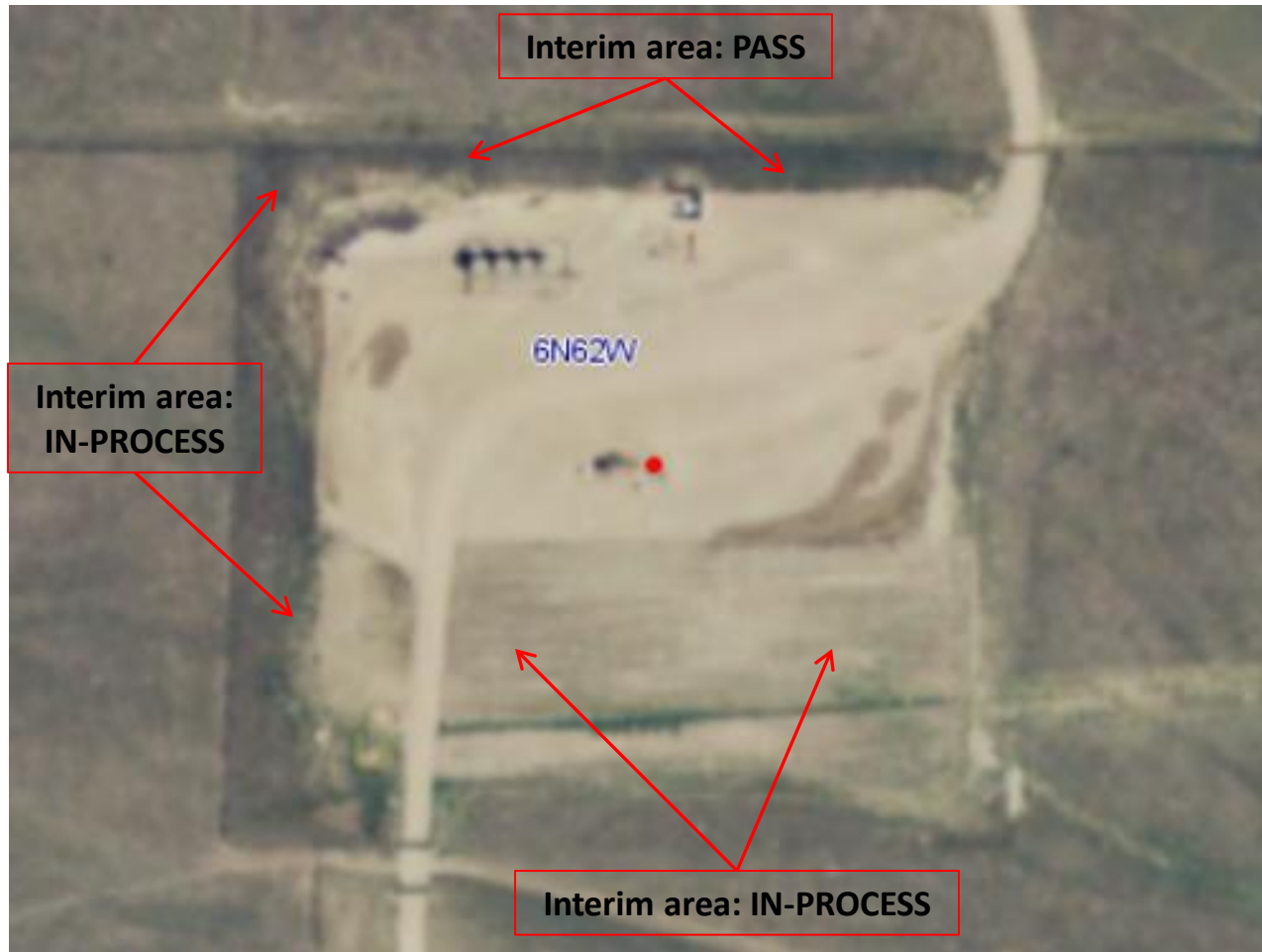


Interim Reclamation and Stormwater Inspection



Aerial imagery taken 2015 using COGCC GISOnline illustrating interim reclamation areas.

Interim Reclamation and Stormwater Inspection



Photo 1. Photo taken from the southern interim area, facing South. The southern interim area is progressing towards reflective percent plant cover of reference areas. However, areas do have weedy, annual plant species like Kochia that remain dominant. Location will be inspected in the future to comply with Rule 1003 standards.

Interim Reclamation and Stormwater Inspection



COLORADO
Oil & Gas Conservation
Commission
Department of Natural Resources



Photo 2. Photo taken from the southwest interim area, facing North. The southwest interim area is progressing towards reflective percent plant cover of reference areas. Location mowed to control undesirable weedy species like Kochia.

Interim Reclamation and Stormwater Inspection



Photo 3. Photo taken from the southwest interim. Photo illustrating native, perennial vegetative growth, primarily blue grama (*Bouteloua gracilis*).

Interim Reclamation and Stormwater Inspection



Photo 4. Photo taken from the northwest location, facing East. Cut slope appears to be stabilized using a blanket even though no observable plant growth has established.

Interim Reclamation and Stormwater Inspection



Photo 5. Photo taken from the northern interim area, facing East. The interim area appears to have sufficient vegetative cover that is reflective of reference areas.

Interim Reclamation and Stormwater Inspection



Photo 6. Photo taken from entrance of location, facing South. Location has a berm ~12" in height built around the southern and eastern perimeter of the location. However, no structural stormwater BMP was observed at the potential discharge point which would appear to be at the entrance.

Interim Reclamation and Stormwater Inspection



Photo 7. Photo taken from entrance of location, facing East. Location has a berm ~12" in height built around the southern and eastern perimeter of the location. However, no structural stormwater BMP was observed at the potential discharge point which would appear to be at the entrance.