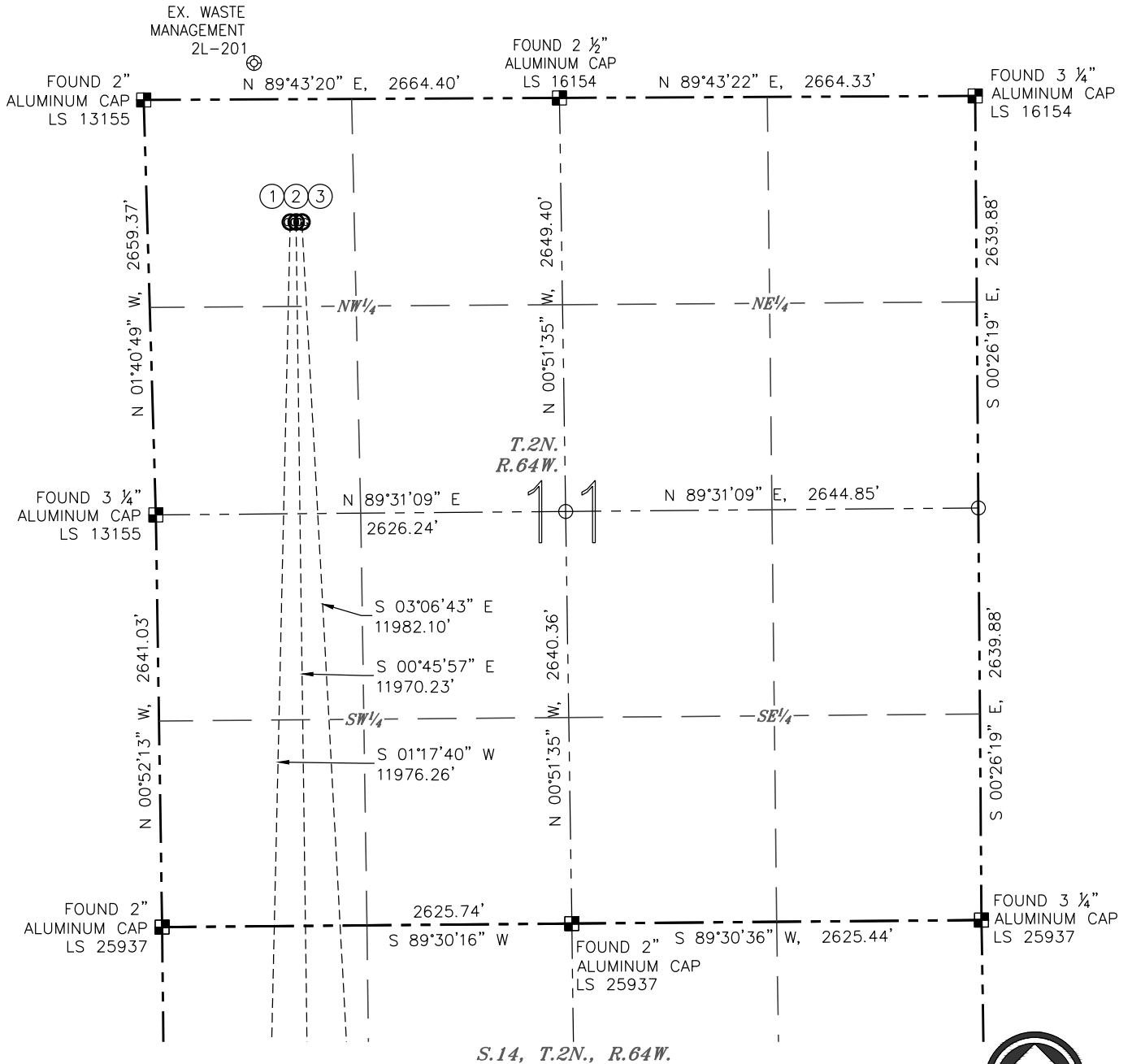


MULTI-WELL PLAN

Y11-29 PAD
(SHEET 1 OF 4)

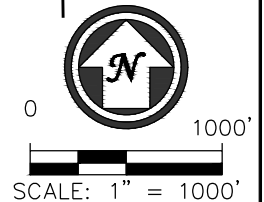
SECTION: 11
TOWNSHIP: 2N
RANGE: 64W



S.14, T.2N., R.64W.

NOTES:

1. HORIZONTAL DATUM IS NAD 83.
2. VERTICAL DATUM IS NAVD 88.



LEGEND

- ⊗ PROPOSED WELL
 - ⊙ EXISTING WELL
 - ⊕ BOTTOM HOLE
 - FOUND MONUMENT
 - CALCULATED POSITION
- DATE: 12/23/2016
JOB #: NE16304

- BOTTOM HOLE DATA -

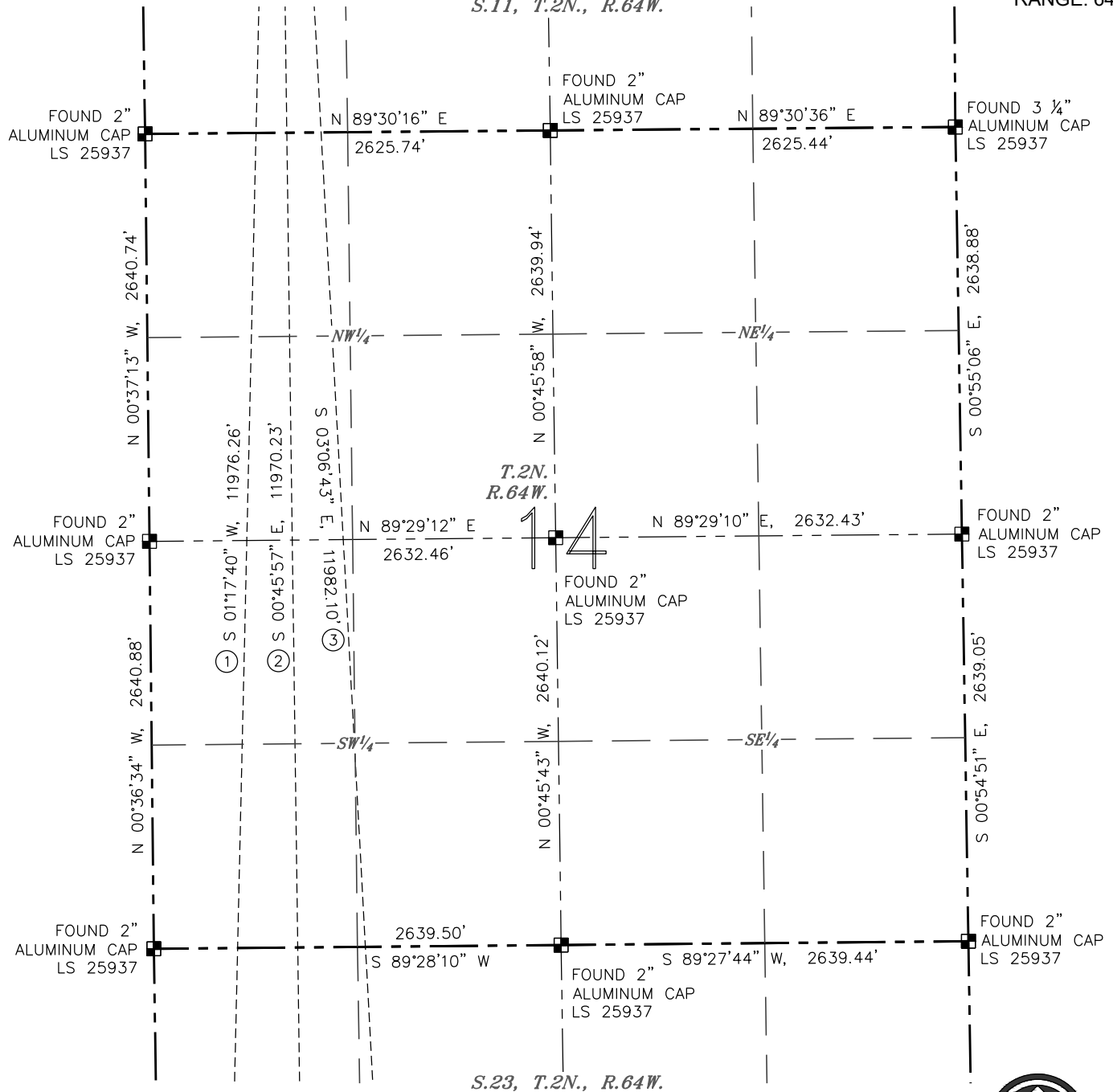
NO.	WELL NAME	FOOTAGES		LATITUDE	LONGITUDE	S-T-R
1	WASTE MANAGEMENT Y23-784	2180' FNL	460' FWL	N 40.12520°	W 104.52639°	23-2-64
2	WASTE MANAGEMENT Y23-776	2180' FNL	928' FWL	N 40.12519°	W 104.52472°	23-2-64
3	WASTE MANAGEMENT Y23-768	2180' FNL	1456' FWL	N 40.12519°	W 104.52283°	23-2-64

MULTI-WELL PLAN

Y11-29 PAD

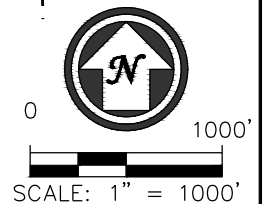
(SHEET 2 OF 4)

S.11, T.2N., R.64W.

SECTION: 11
TOWNSHIP: 2N
RANGE: 64W

NOTES:

1. HORIZONTAL DATUM IS NAD 83.
2. VERTICAL DATUM IS NAVD 88.



LEGEND

- ⊗ PROPOSED WELL
 - ⊙ EXISTING WELL
 - ⊙ BOTTOM HOLE
 - FOUND MONUMENT
 - CALCULATED POSITION
- DATE: 12/23/2016
JOB #: NE16304

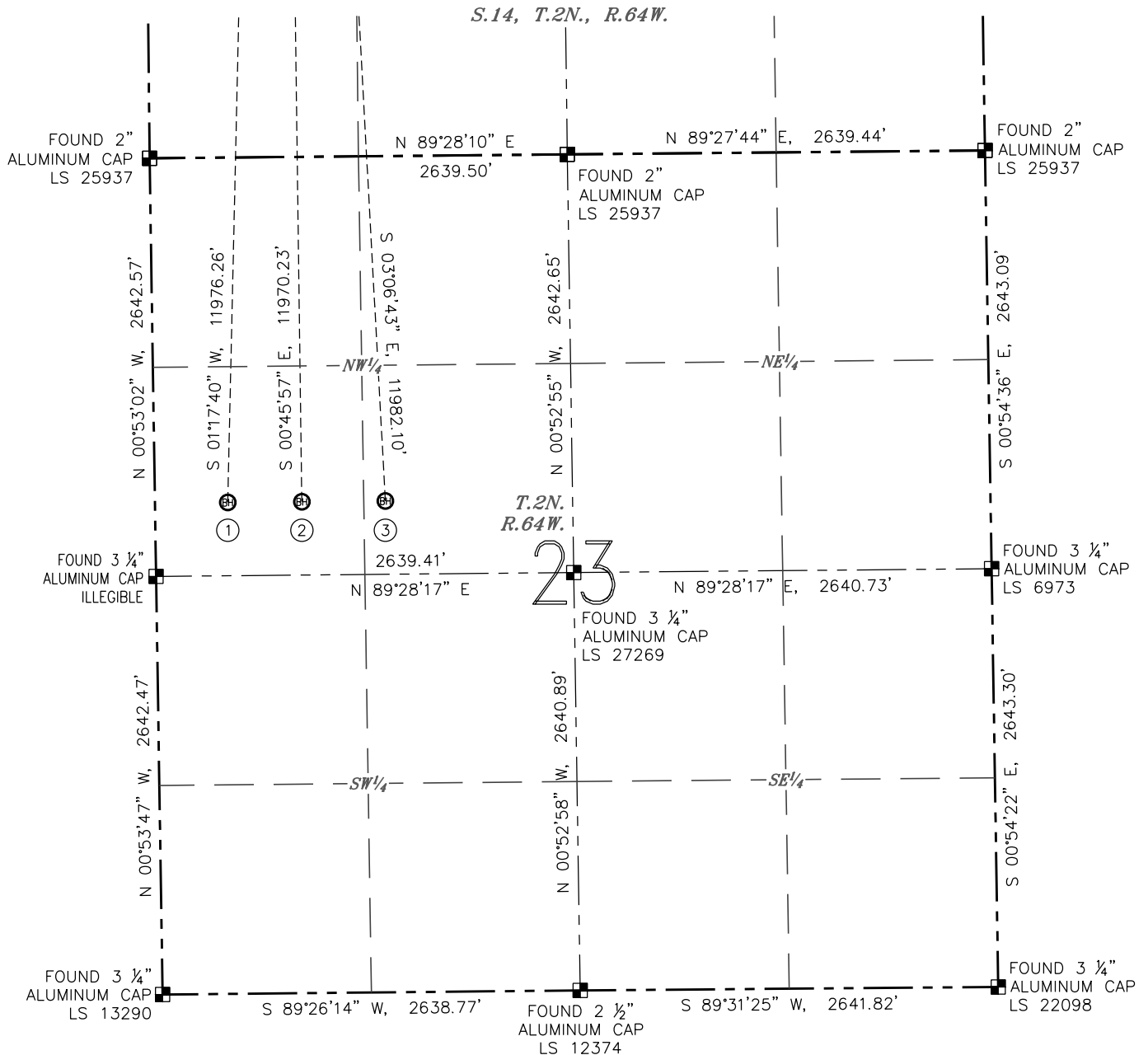
- BOTTOM HOLE DATA -

NO.	WELL NAME	FOOTAGES		LATITUDE	LONGITUDE	S-T-R
1	WASTE MANAGEMENT Y23-784	2180' FNL	460' FWL	N 40.12520°	W 104.52639°	23-2-64
2	WASTE MANAGEMENT Y23-776	2180' FNL	928' FWL	N 40.12519°	W 104.52472°	23-2-64
3	WASTE MANAGEMENT Y23-768	2180' FNL	1456' FWL	N 40.12519°	W 104.52283°	23-2-64

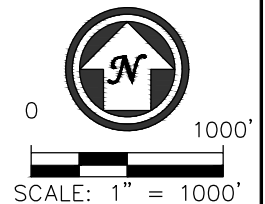
MULTI-WELL PLAN

Y11-29 PAD
(SHEET 3 OF 4)






SECTION: 11
TOWNSHIP: 2N
RANGE: 64W



- NOTES:
1. HORIZONTAL DATUM IS NAD 83.
 2. VERTICAL DATUM IS NAVD 88.



LEGEND

-  PROPOSED WELL
 EXISTING WELL
 BOTTOM HOLE
 FOUND MONUMENT
 CALCULATED POSITION
DATE: 12/23/2016
JOB #: NE16304

- BOTTOM HOLE DATA -						
NO.	WELL NAME	FOOTAGES		LATITUDE	LONGITUDE	S-T-R
1	WASTE MANAGEMENT Y23-784	2180' FNL	460' FWL	N 40.12520°	W 104.52639°	23-2-64
2	WASTE MANAGEMENT Y23-776	2180' FNL	928' FWL	N 40.12519°	W 104.52472°	23-2-64
3	WASTE MANAGEMENT Y23-768	2180' FNL	1456' FWL	N 40.12519°	W 104.52283°	23-2-64

MULTI-WELL PLAN


Y11-29 PAD
(SHEET 4 OF 4)

SECTION: 11
TOWNSHIP: 2N
RANGE: 64W



SCALE: 1" = 200'

LEGEND

 PROPOSED WELL

DATE: 12/23/2016
JOB #: NE16304