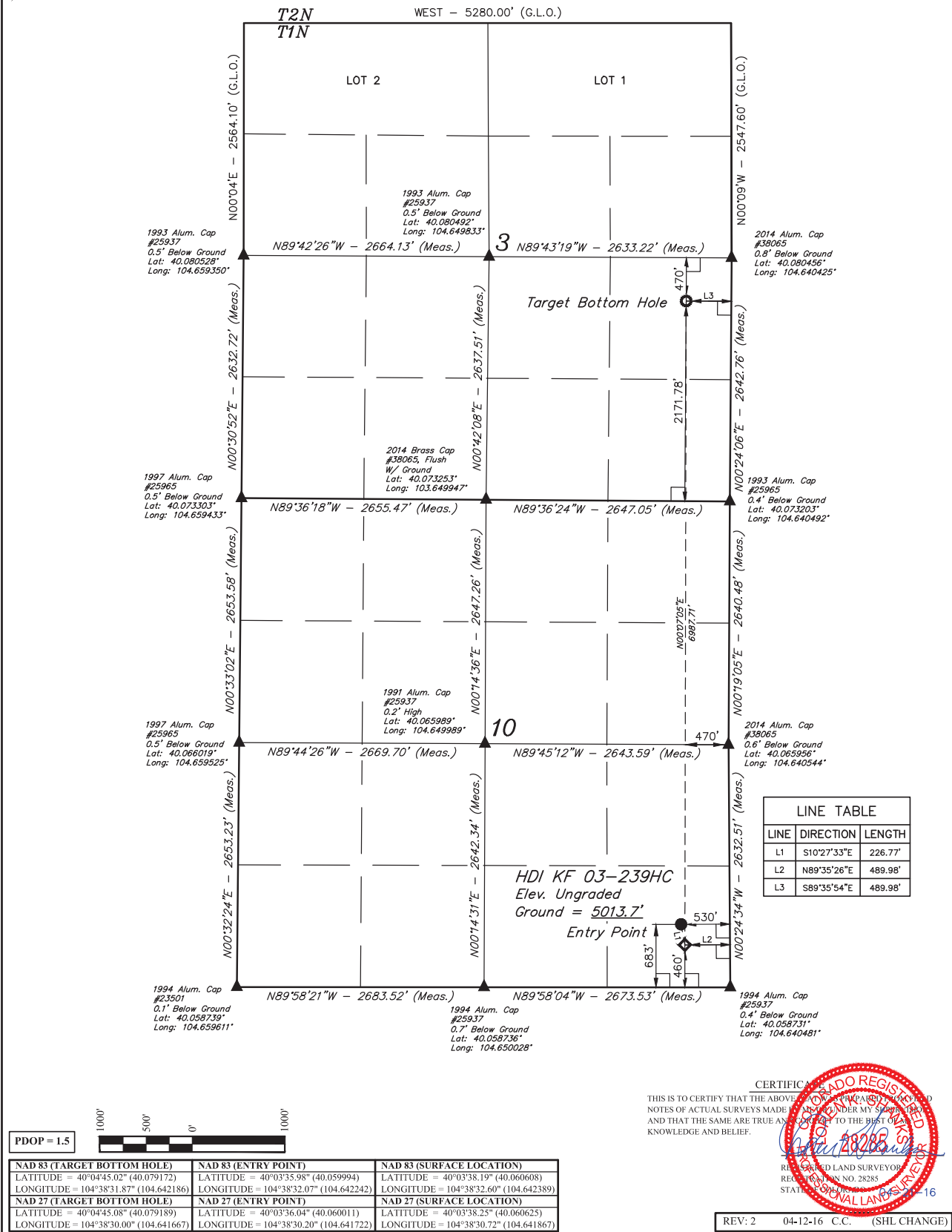


LEGEND:

- 90° SYMBOL
- PROPOSED WELL HEAD.
- TARGET BOTTOM HOLE.
- SECTION CORNERS LOCATED. (NAD 83)
- ENTRY POINT.

T1N, R65W, 6th P.M.



BASIS OF BEARINGS
 BASIS OF BEARINGS IS A G.P.S. OBSERVATION

BASIS OF ELEVATION
 USGS COOPERATIVE BASE NETWORK CONTROL STATION, DESIGNATION "HUDSON CC".
 NGS DATA SHEET LISTS THE NAVD 88 ELEVATION AS BEING 4999 FEET.



UELS, LLC
 Corporate Office * 85 South 200 East
 Vernal, UT 84078 * (435) 789-1017



GREAT WESTERN OPERATING COMPANY

HDI KF 03-239HC
 SE 1/4 SE 1/4, SECTION 10, T1N, R65W, 6th P.M.
 WELD COUNTY, COLORADO

SURVEYED BY	DATE		
DALLAS NIELSEN, C.M.	02-17-16		
DRAWN BY	DATE		
L.C.S.	02-24-16		
SCALE	1" = 1000'		
WELL LOCATION PLAT			

THIS IS TO CERTIFY THAT THE ABOVE DESCRIBED SURVEY WAS MADE BY ME OR UNDER MY SUPERVISION AND THAT THE SAME ARE TRUE AND CORRECT TO THE BEST OF MY KNOWLEDGE AND BELIEF.

CERTIFICATE OF SURVEY
 REGISTERED LAND SURVEYOR
 REGISTRATION NO. 28285
 STATE OF COLORADO
 04-12-16