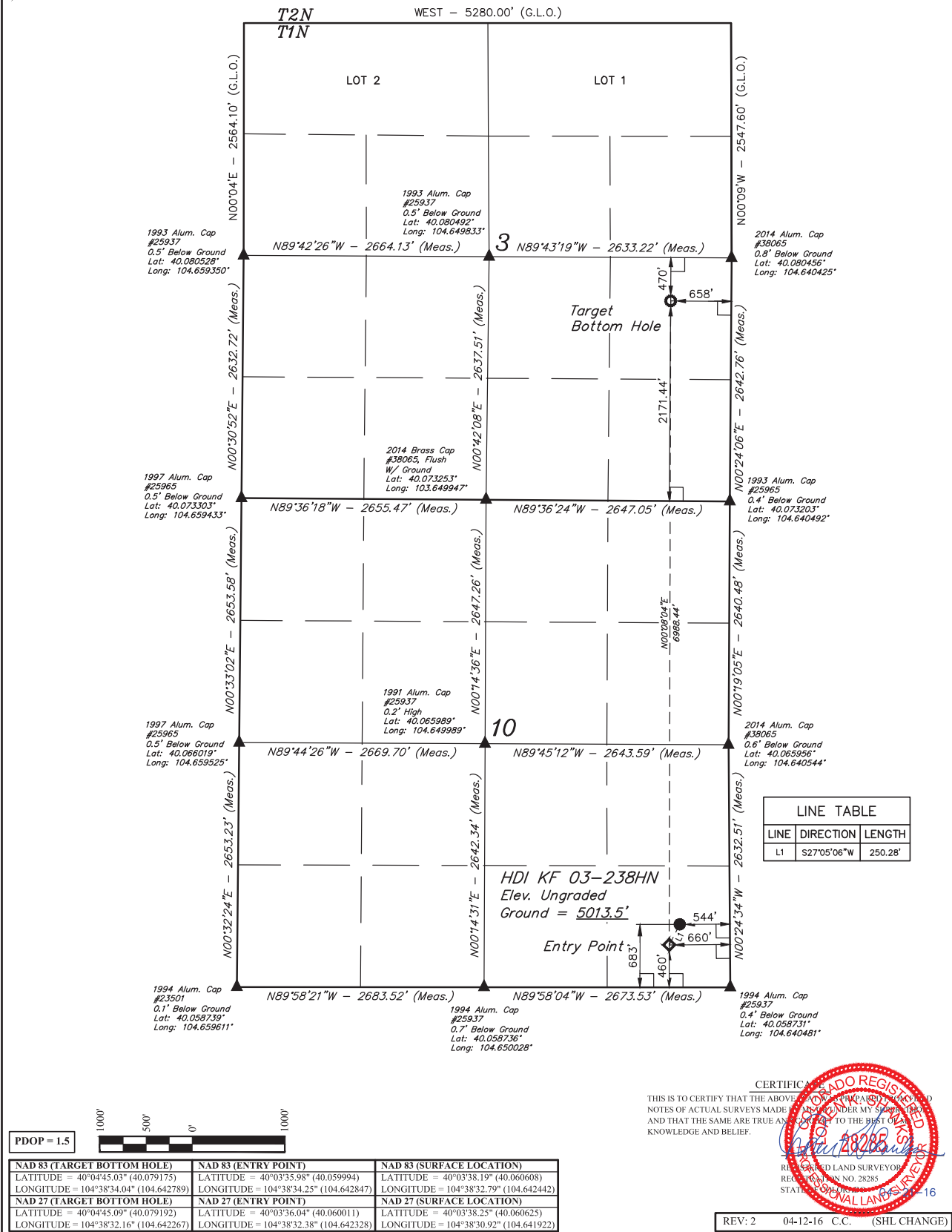


LEGEND:

- = 90° SYMBOL
- = PROPOSED WELL HEAD.
- = TARGET BOTTOM HOLE.
- ▲ = SECTION CORNERS LOCATED. (NAD 83)
- ◆ = ENTRY POINT.

T1N, R65W, 6th P.M.



BASIS OF BEARINGS
BASIS OF BEARINGS IS A G.P.S. OBSERVATION

BASIS OF ELEVATION
USGS COOPERATIVE BASE NETWORK CONTROL STATION, DESIGNATION "HUDSON CC".
NGS DATA SHEET LISTS THE NAVD 88 ELEVATION AS BEING 4999 FEET.



UEL, LLC
Corporate Office * 85 South 200 East
Vernal, UT 84078 * (435) 789-1017



GREAT WESTERN OPERATING COMPANY			
HDI KF 03-238HN			
SE 1/4 SE 1/4, SECTION 10, T1N, R65W, 6th P.M.			
WELD COUNTY, COLORADO			
SURVEYED BY	DATE		
DALLAS NIELSEN, C.M.	02-17-16		
DRAWN BY	DATE		
L.C.S.	02-24-16		
SCALE	1" = 1000'		
WELL LOCATION PLAT			