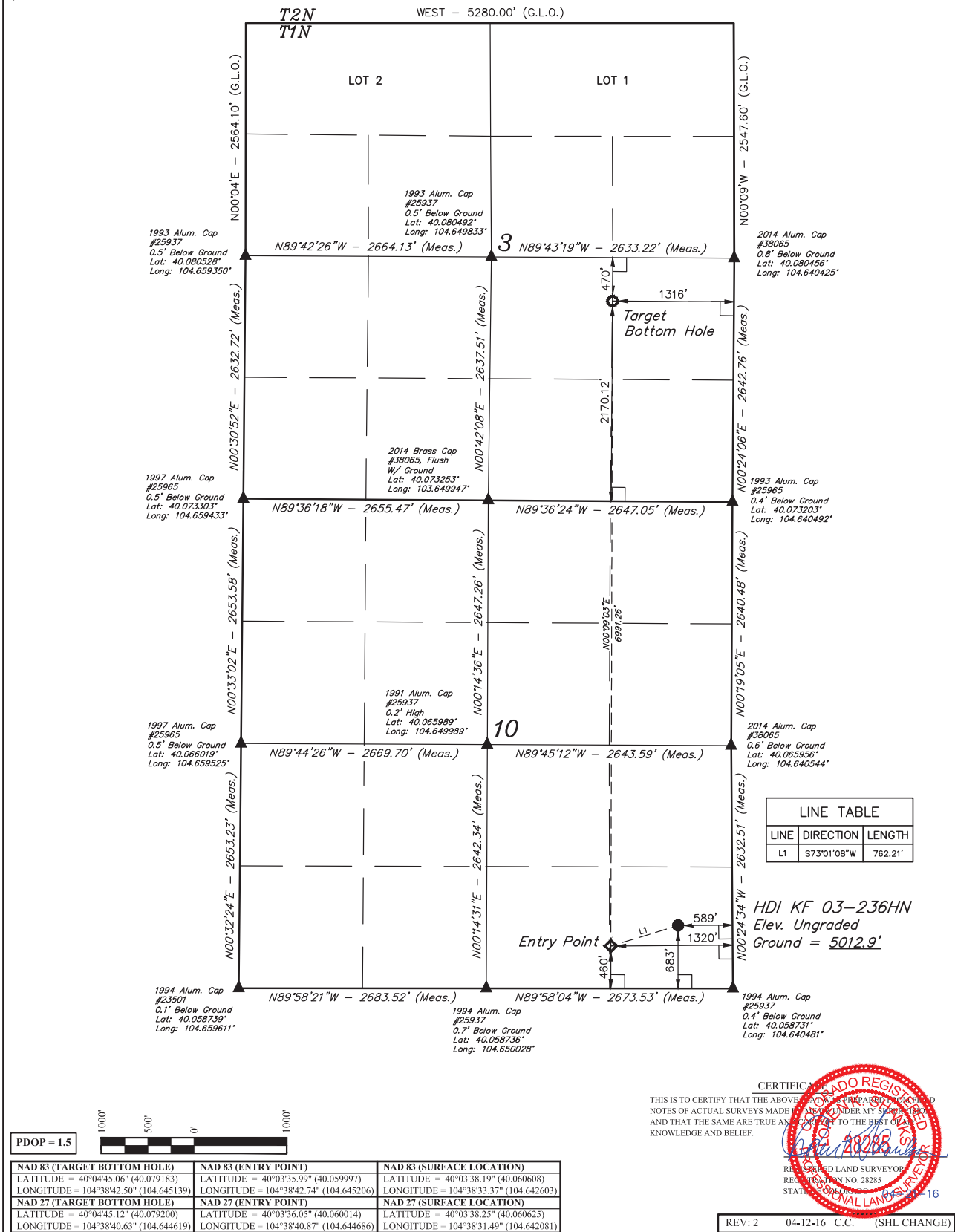


T1N, R65W, 6th P.M.



CERTIFICATE

THIS IS TO CERTIFY THAT THE ABOVE DRAWING WAS PREPARED FROM FIELD NOTES OF ACTUAL SURVEYS MADE BY ME OR UNDER MY SUPERVISION AND THAT THE SAME ARE TRUE AND CORRECT TO THE BEST OF MY KNOWLEDGE AND BELIEF.

REGISTERED LAND SURVEYOR
REGISTRATION NO. 28285
STATE OF COLORADO
04-21-16

REV: 2 04-12-16 C.C. (SHL CHANGE)

BASIS OF BEARINGS
BASIS OF BEARINGS IS A G.P.S. OBSERVATION

BASIS OF ELEVATION

USGS COOPERATIVE BASE NETWORK CONTROL STATION, DESIGNATION "HUDSON CC".
NGS DATA SHEET LISTS THE NAVD 88 ELEVATION AS BEING 4999 FEET.



UINTAH
ENGINEERING & LAND SURVEYING

UELS, LLC
Corporate Office * 85 South 200 East
Vernal, UT 84078 * (435) 789-1017

GREAT WESTERN OPERATING COMPANY

HDI KF 03-236HN
SE 1/4 SE 1/4, SECTION 10, T1N, R65W, 6th P.M.
WELD COUNTY, COLORADO

SURVEYED BY	DATE		
DALLAS NIELSEN, C.M.	02-17-16		
DRAWN BY	DATE		
L.C.S.	02-24-16		
SCALE	1" = 1000'		

WELL LOCATION PLAT