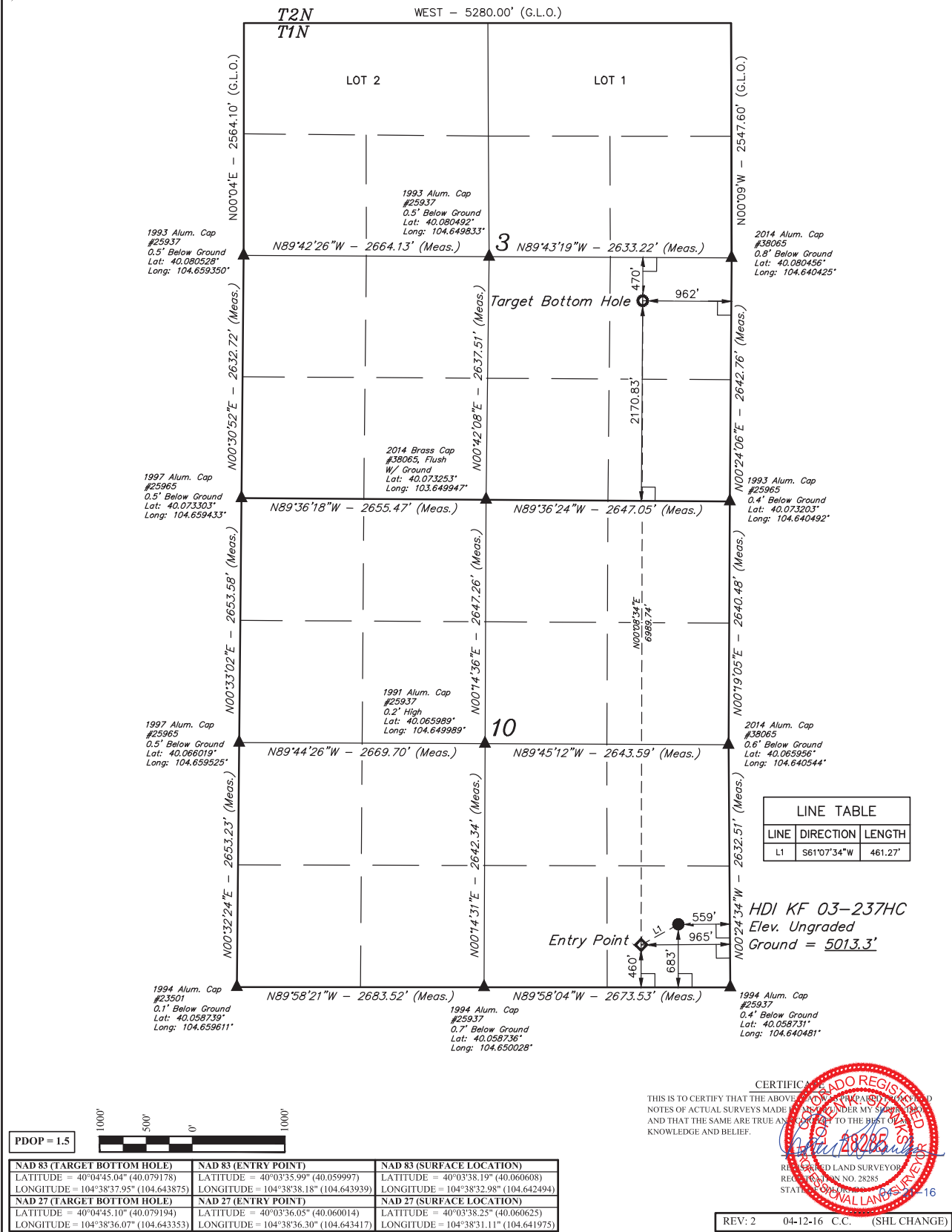


# LEGEND:

- = 90° SYMBOL
- = PROPOSED WELLHEAD.
- = TARGET BOTTOM HOLE.
- ▲ = SECTION CORNERS LOCATED. (NAD 83)
- ◆ = ENTRY POINT.

T1N, R65W, 6th P.M.



**BASIS OF BEARINGS**  
BASIS OF BEARINGS IS A G.P.S. OBSERVATION

**BASIS OF ELEVATION**  
USGS COOPERATIVE BASE NETWORK CONTROL STATION, DESIGNATION "HUDSON CC".  
NGS DATA SHEET LISTS THE NAVD 88 ELEVATION AS BEING 4999 FEET.



**UELS, LLC**  
Corporate Office \* 85 South 200 East  
Vernal, UT 84078 \* (435) 789-1017



THIS IS TO CERTIFY THAT THE ABOVE IS A TRUE AND CORRECT COPY OF THE ORIGINAL SURVEY NOTES OF ACTUAL SURVEYS MADE BY ME OR UNDER MY SUPERVISION AND THAT THE SAME ARE TRUE AND CORRECT TO THE BEST OF MY KNOWLEDGE AND BELIEF.



REV: 2 04-12-16 C.C. (SHL CHANGE)

## GREAT WESTERN OPERATING COMPANY

**HDI KF 03-237HC**  
**SE 1/4 SE 1/4, SECTION 10, T1N, R65W, 6th P.M.**  
**WELD COUNTY, COLORADO**

|                      |            |  |  |
|----------------------|------------|--|--|
| SURVEYED BY          | DATE       |  |  |
| DALLAS NIELSEN, C.M. | 02-17-16   |  |  |
| DRAWN BY             | DATE       |  |  |
| L.C.S.               | 02-24-16   |  |  |
| SCALE                | 1" = 1000' |  |  |

## WELL LOCATION PLAT