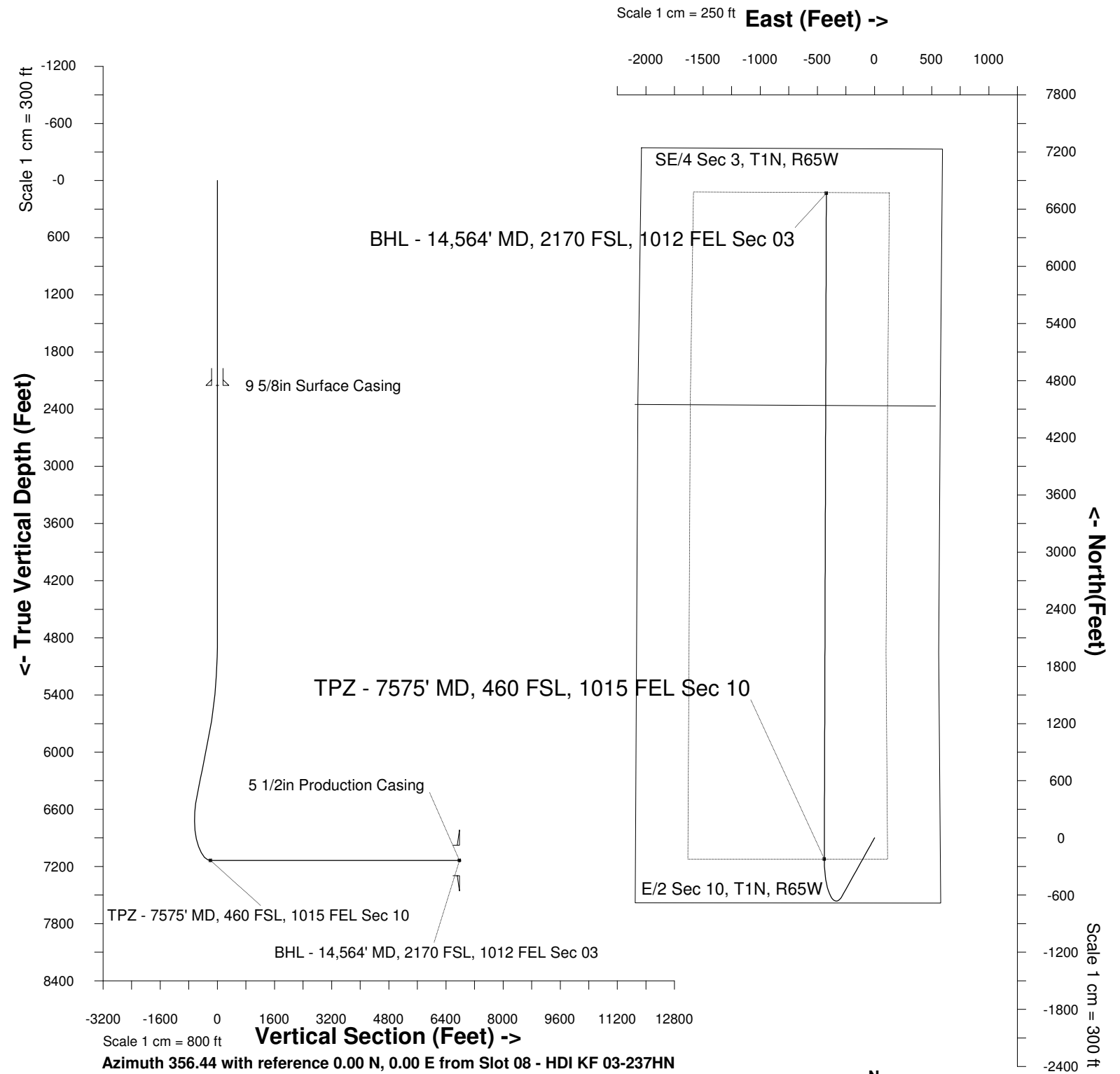


Great Western Operating Company, LLC

Location	Colorado	Slot	Slot 08 - HDI KF 03-237HN
Field	Wattenburg	Well	HDI KF 03-237HN
Installation	HDI	Wellbore	HDI KF 03-237HN (PWB)

Created by admin
Date plotted 6-May-2016
Plot reference is HDI KF 03-237HN (PWB).
Ref wellpath is HDI KF 03-237HN (PWP#1).
Coordinates are in Feet reference Slot 08 - HDI KF 03-237HN.
True Vertical Depths are reference Rig Datum.
Measured Depths are reference Rig Datum.
Rig Datum: Planned Datum #1
Rig Datum to Mean Sea Level: 5027.70 ft.
Plot North is aligned to TRUE North.



WELL PROFILE DATA

Point	MD	Inc	Azi	TVD	North	East	deg/100ft	V. Sect
Tie on	16.20	0.00	0.00	16.20	S 0.00	W 0.00		0.00
KOP	4846.70	0.00	204.90	4846.70	S 0.00	W 0.00	0.00	0.00
End of Build	5870.18	30.70	204.90	5821.89	S 242.84	W 112.74	9.84	-235.36
End of Hold	6670.44	30.70	204.90	6509.97	S 613.47	W 284.80	0.00	-594.58
Target TPZ - ...Sec 10	7575.25	90.00	0.15	7136.00	S 222.58	W 439.47	42.65	-194.83
T.D. & Target BHL... 03	14563.83	90.00	0.15	7136.00	N 6765.98	W 421.44	0.00	6779.09

