

1801 Broadway
Suite 500
Denver, Colorado 80202



Allison Linz
Regulatory Technician
Tel: 303.398.0355
E-mail:
regulatorypermitting@gwogco.com

July 27, 2016

Colorado Oil and Gas Conservation Commission
1120 Lincoln Street, Suite 801
Denver, Colorado 80203

RE: **Proposed Wellbore Spacing Unit**
HDI FK 03-233HN
Niobrara New Drill

SESE Section 10
Township 1N, Range 65W, 6th P.M.
Weld County, Colorado

Dear Director:

Great Western Operating Company, LLC is planning to drill the above captioned well in accordance with the provisions of COGCC Rule 318A.e.

Great Western proposed wellbore spacing unit consists of:

- **1N-65W-Sec 3:SE**
- **1N-65W-Sec 10: E2**
- **480 Acres**

The 30 day notification time period has passed and we have not received any objections to such well locations or proposed spacing unit, therefore Great Western hereby requests the Director to approve the above mentioned well. Great Western Operating Company, LLC respectfully requests that the COGCC review the enclosed map illustrating the proposed wellbore spacing unit.

Respectfully,

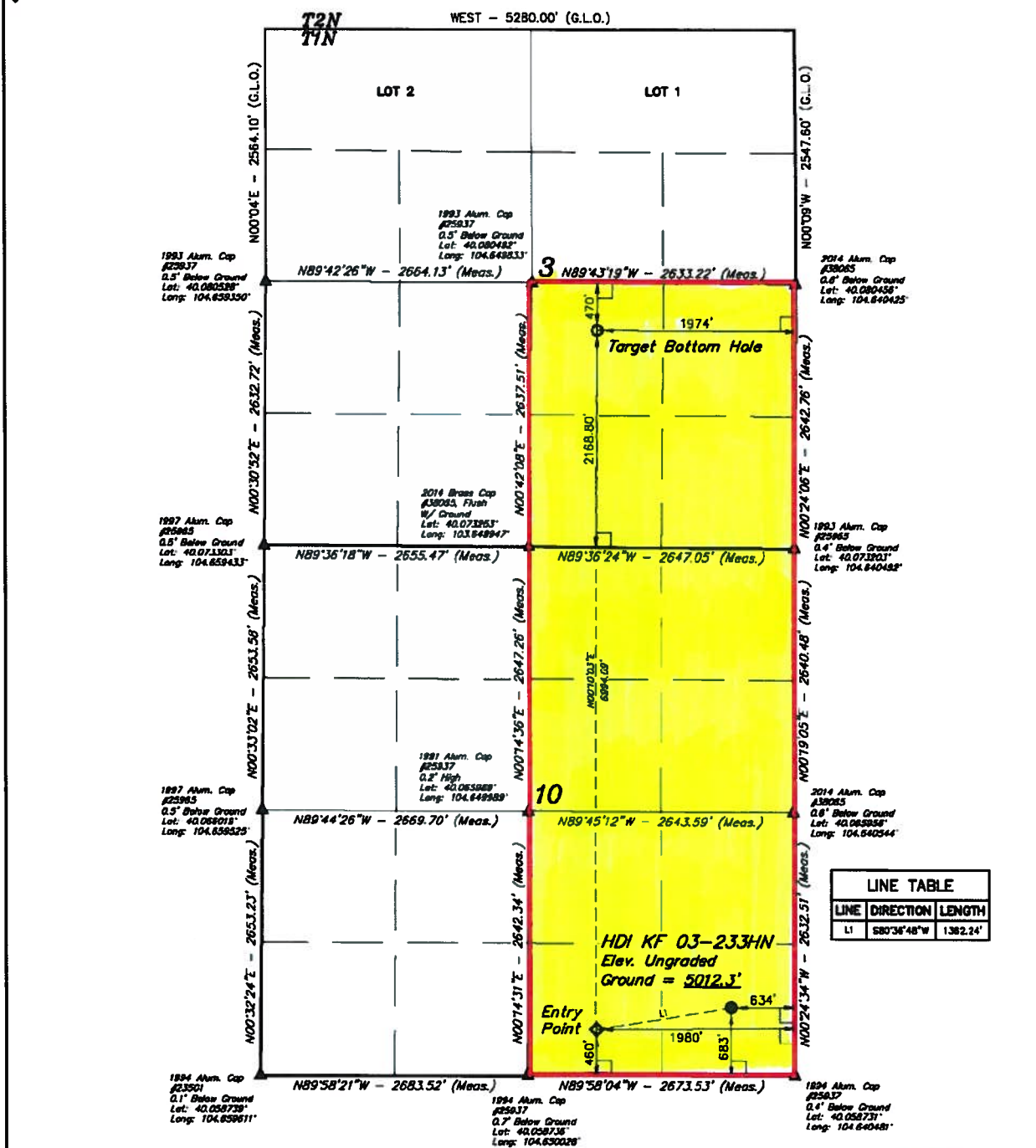
Allison Linz

Allison Linz
Regulatory Technician
Great Western Operating Company, LLC

LEGEND:

- 30' SYMBOL
- PROPOSED WELLHEAD
- TARGET BOTTOM HOLE
- ▲ SECTION CORNERS LOCATED (NAD 83)
- ◆ ENTRY POINT

T1N, R65W, 6th P.M.



LINE TABLE		
LINE	DIRECTION	LENGTH
L1	S80°36'48"W	1382.24'



NAD 83 (TARGET BOTTOM HOLE)	NAD 83 (ENTRY POINT)	NAD 83 (SURFACE LOCATION)
LATITUDE - 40°04'43.09" (40.078192)	LATITUDE - 40°03'33.99" (40.059997)	LATITUDE - 40°03'38.19" (40.060606)
LONGITUDE - 104°38'46.96" (104.647489)	LONGITUDE - 104°38'51.33" (104.647566)	LONGITUDE - 104°38'33.95" (104.642766)
NAD 27 (TARGET BOTTOM HOLE)	NAD 27 (ENTRY POINT)	NAD 27 (SURFACE LOCATION)
LATITUDE - 40°04'43.15" (40.078208)	LATITUDE - 40°03'34.05" (40.060014)	LATITUDE - 40°03'38.23" (40.060625)
LONGITUDE - 104°38'46.09" (104.646969)	LONGITUDE - 104°38'46.35" (104.647042)	LONGITUDE - 104°38'32.07" (104.642242)

BASE OF BEARINGS
BASE OF BEARINGS IS A C.P. 3 OBSERVATION

BASE OF ELEVATION
USGS COOPERATIVE BASE NETWORK CONTROL STATION DESIGNATION "BRIDGTON C.S."
NAD DATA SHEET LISTS THIS POINT IN ELEVATION AS BEING 4999 FEET.



UELS, LLC
Corporate Office • 85 South 280 East
Vernal, UT 84078 • (435) 789-1817



CERTIFICATE OF RECORDING

THIS IS TO CERTIFY THAT THE ABOVE DESCRIBED SURVEY WAS MADE BY ME AND THAT THE SAME ARE TRUE AND CORRECT TO THE BEST OF MY KNOWLEDGE AND BELIEF.

[Signature]

REGISTERED LAND SURVEYOR
EXPIRATION NO. 28383
STATE OF UTAH 12-16

REV: 2 04-12-16 C.C. (SHL CHANGE)

GREAT WESTERN OPERATING COMPANY

HDI KF 03-233HN
SE 1/4 SE 1/4, SECTION 10, T1N, R65W, 6th P.M.
WELD COUNTY, COLORADO

SURVEYED BY	DATE
DALLAS NIELSEN, C.M.	02-17-16
DRAWN BY	DATE
L.C.S.	02-24-16
SCALE	1" = 1000'

WELL LOCATION PLAT