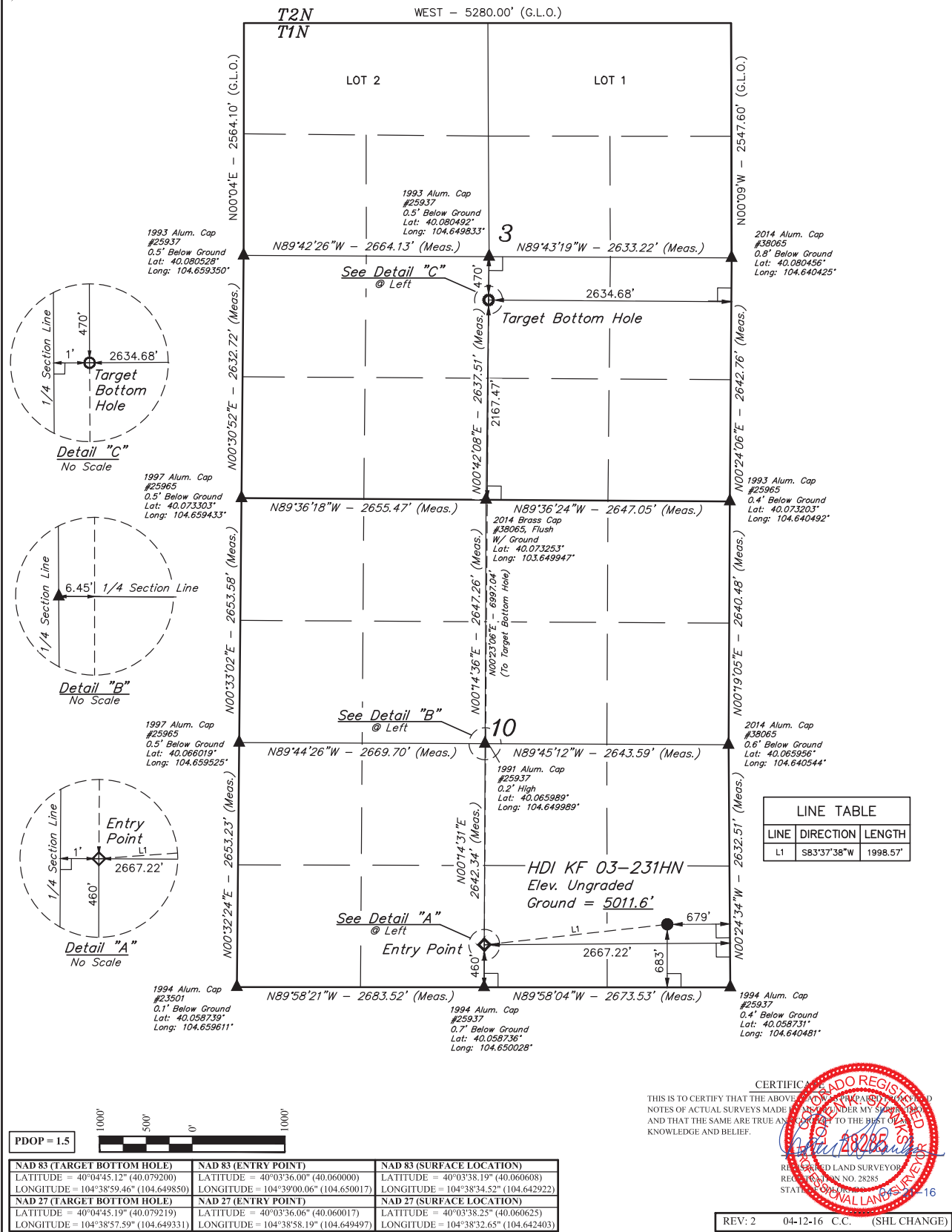


# LEGEND:

- 90° SYMBOL
- PROPOSED WELLHEAD.
- TARGET BOTTOM HOLE.
- SECTION CORNERS LOCATED. (NAD 83)
- ENTRY POINT.

T1N, R65W, 6th P.M.



**BASIS OF BEARINGS**  
BASIS OF BEARINGS IS A G.P.S. OBSERVATION

**BASIS OF ELEVATION**  
USGS COOPERATIVE BASE NETWORK CONTROL STATION, DESIGNATION "HUDSON CC".  
NGS DATA SHEET LISTS THE NAVD 88 ELEVATION AS BEING 4999 FEET.

**GREAT WESTERN OPERATING COMPANY**

HDI KF 03-231HN  
SE 1/4 SE 1/4, SECTION 10, T1N, R65W, 6th P.M.  
WELD COUNTY, COLORADO

SURVEYED BY	DATE
DALLAS NIELSEN, C.M.	02-17-16
DRAWN BY	DATE
L.C.S.	02-24-16
SCALE	1" = 1000'

**WELL LOCATION PLAT**

**UELS, LLC**  
Corporate Office \* 85 South 200 East  
Vernal, UT 84078 \* (435) 789-1017