

NOBLE ENERGY INC.
 Nakagawa PMB13-10
 NWSE 13-5N-64W
 1980 FSL & 1980 FEL
 WELD COUNTY, CO
 Wattenberg
CURRENT WELLBORE SCHEMATIC
 with PROPOSED P&A
 1/11/2017

API: 05-123-14157
 COGCC #

GL Elev: 4570'
 KB Elev: 4580'

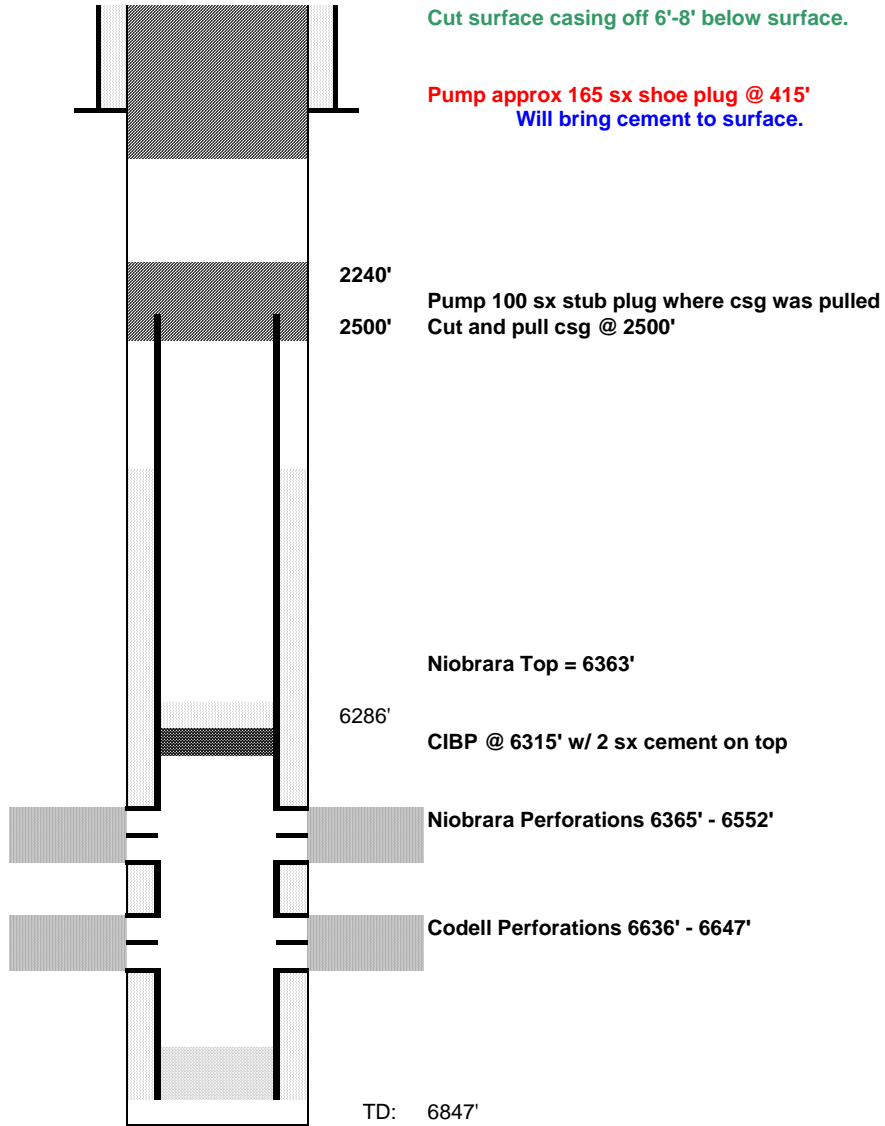
Spud Date: 1/6/1989

Surface Casing :
 8 5/8" 24# @ 311'
 Cement: 325 sx
 TOC: Surface

FH Depth= 91'
 Deepest Water Well = 114'

TOC @ 5873'

Production Casing :
 4 1/2" 15.1# @ 6797'
 Cement: 220 sx
 TD: 1/12/1989



Cut surface casing off 6'-8' below surface.

Pump approx 165 sx shoe plug @ 415'
 Will bring cement to surface.

2240'
 2500'
 Pump 100 sx stub plug where csg was pulled
 Cut and pull csg @ 2500''

Niobrara Top = 6363'
 6286'
 CIBP @ 6315' w/ 2 sx cement on top

Niobrara Perforations 6365' - 6552'

Codell Perforations 6636' - 6647'

TD: 6847'