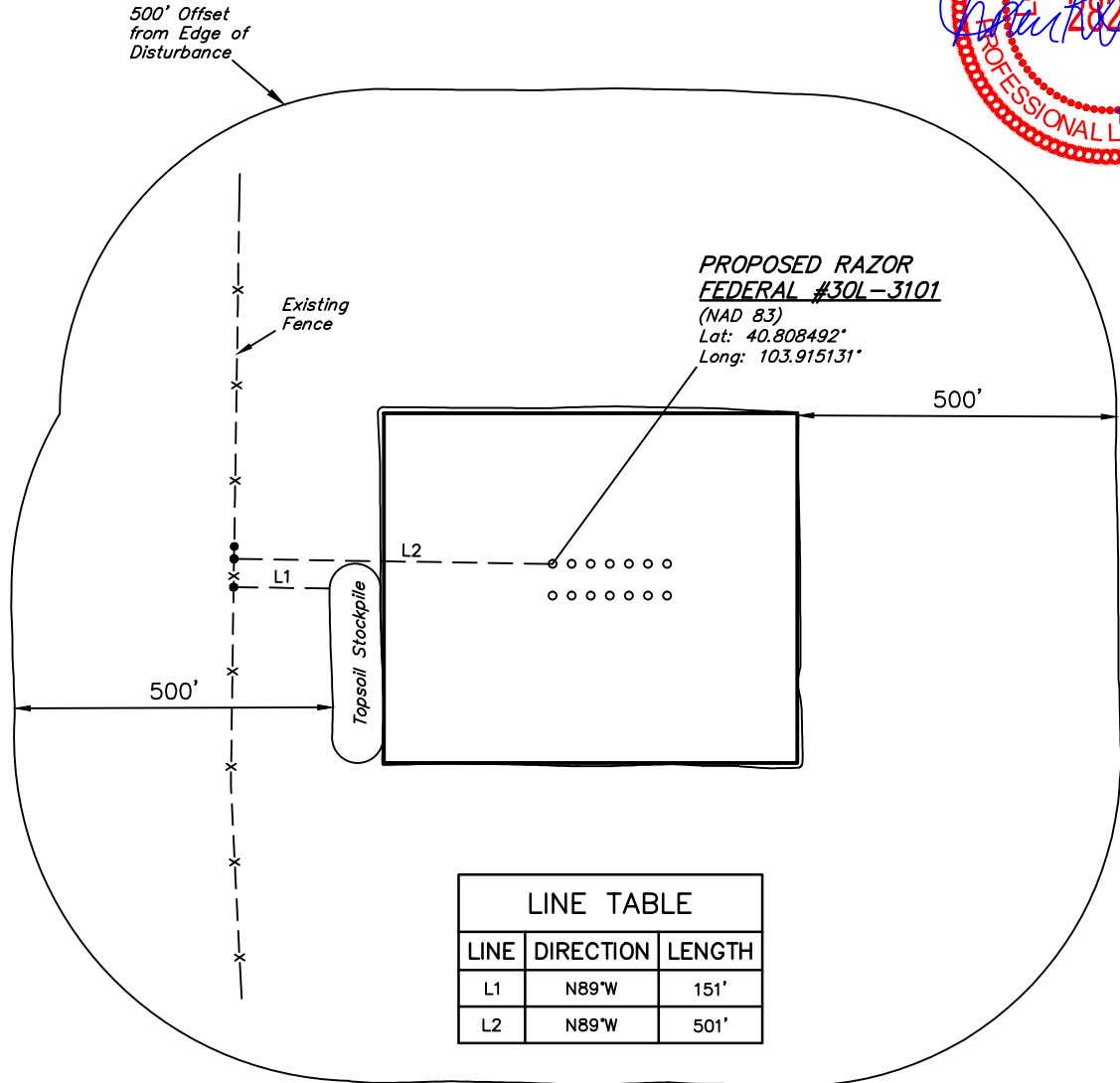
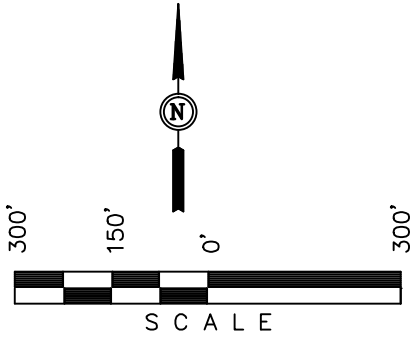


**WHITING OIL & GAS CORP.**

**LOCATION DRAWING FOR**

RAZOR FED #30L-1901, 1934, 1902, 1935,  
1903, 1936, 1904, 3101, 3134, 3102, 3135,  
3103, 3136 & 3104  
SECTION 30, T10N, R58W, 6th P.M.  
LOT 3

SCALE: 1" = 300'  
DATE SURVEYED: 01-10-14  
SURVEYED BY: DAVE SWANSON  
DATE DRAWN: 05-16-12  
DRAWN BY: W.M.  
REV: 03-14-13 J.S.  
REV: 03-20-13 J.S.  
REV: 07-19-13 B.D.H.  
REV: 01-21-14 H.K.W.  
REV: 10-23-15 C.C.



**PROPOSED RAZOR  
FEDERAL #30L-3101**  
(NAD 83)  
Lat: 40.808492°  
Long: 103.915131°

LINE TABLE		
LINE	DIRECTION	LENGTH
L1	N89°W	151'
L2	N89°W	501'