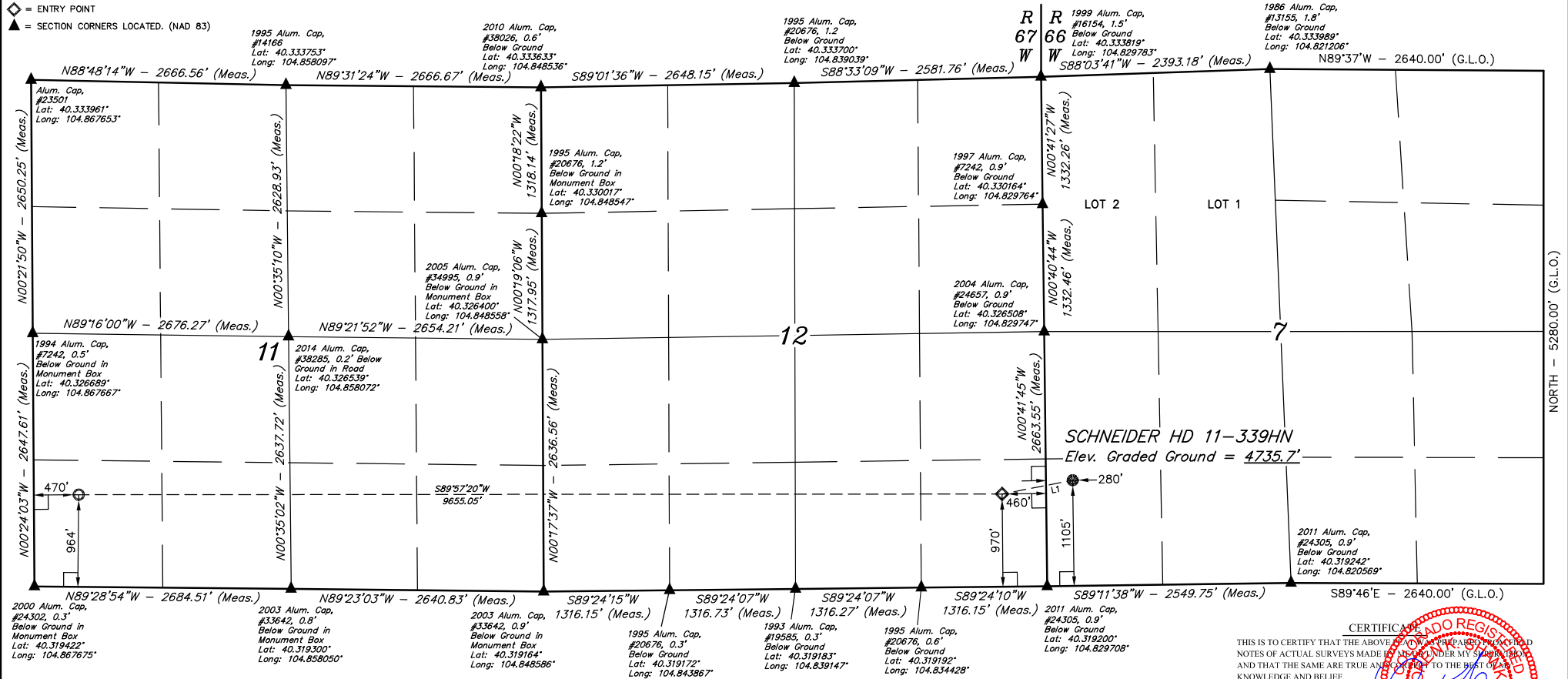


LEGEND:

- = 90° SYMBOL
- = PROPOSED WELLHEAD.
- = TARGET BOTTOM HOLE.
- ◆ = ENTRY POINT
- ▲ = SECTION CORNERS LOCATED. (NAD 83)

T4N, R66W, 6th P.M.



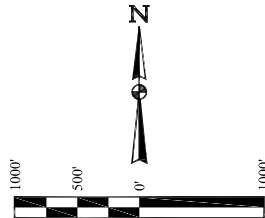
LINE TABLE		
LINE	DIRECTION	LENGTH
L1	S78°58'21"W	752.21'

BASIS OF BEARINGS

BASIS OF BEARINGS IS A G.P.S. OBSERVATION

BASIS OF ELEVATION

USGS COOPERATIVE BASE NETWORK CONTROL STATION, DESIGNATION "VERMILYEA". NGS DATA SHEET LISTS THE NAVD 88 ELEVATION AS BEING 5026 FEET.



CERTIFICATE OF REGISTRATION
THIS IS TO CERTIFY THAT THE ABOVE SIGNED AND SEALED NOTES OF ACTUAL SURVEYS MADE BY AND UNDER MY SUPERVISION AND THAT THE SAME ARE TRUE AND CORRECT TO THE BEST OF MY KNOWLEDGE AND BELIEF.

REGISTERED LAND SURVEYOR
REGISTRATION NO. 28285
STATE OF COLORADO
JUL 16 2016

REV: 1 11-16-16 K.B. (NAME, EP & TBH CHANGE)

GREAT WESTERN OPERATING COMPANY

SCHNEIDER HD 11-339HN
SW 1/4 SW 1/4, SECTION 7, T4N, R66W, 6th P.M.
WELD COUNTY, COLORADO

SURVEYED BY	GREG WEIMER, J.S.	05-27-16	SCALE
DRAWN BY	K.B.	05-31-16	1" = 1000'

WELL LOCATION PLAT

PDOP = 1.4

NAD 83 (SURFACE LOCATION)	NAD 83 (ENTRY POINT)	NAD 83 (TARGET BOTTOM HOLE)
LATITUDE = 40°19'20.05" (40.322236)	LATITUDE = 40°19'18.69" (40.321858)	LATITUDE = 40°19'19.37" (40.322047)
LONGITUDE = 104°49'43.40" (104.828722)	LONGITUDE = 104°49'52.94" (104.831372)	LONGITUDE = 104°51'57.55" (104.865986)
NAD 27 (SURFACE LOCATION)	NAD 27 (ENTRY POINT)	NAD 27 (TARGET BOTTOM HOLE)
LATITUDE = 40°19'20.11" (40.322253)	LATITUDE = 40°19'18.75" (40.321875)	LATITUDE = 40°19'19.43" (40.322064)
LONGITUDE = 104°49'41.50" (104.828194)	LONGITUDE = 104°49'51.04" (104.830844)	LONGITUDE = 104°51'55.65" (104.865458)



UELS, LLC
Corporate Office * 85 South 200 East
Vernal, UT 84078 * (435) 789-1017